



Central Pollution Control Board

Air Quality Status for Delhi & NCR

Dated – December 23, 2021



Current Air Quality Status:

Air Quality Index (AQI) (Average of past 24 hours)

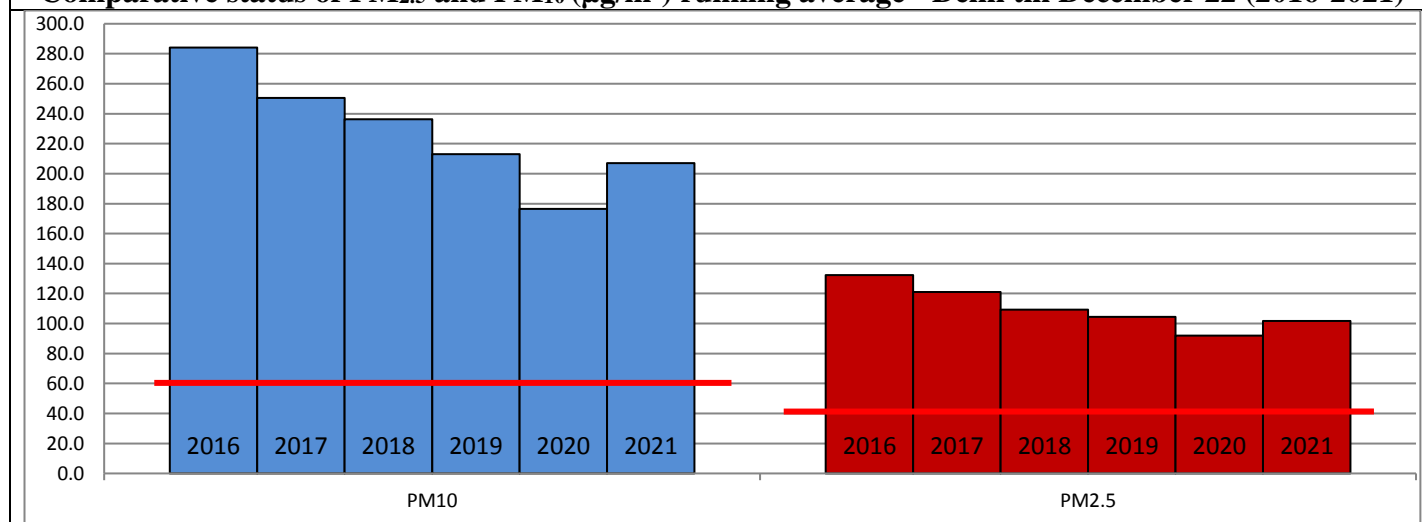
	Air Quality	AQI Value	Prominent Pollutant
Delhi	Severe	423↑	PM _{2.5}
Faridabad	Severe	452↑	PM _{2.5}
Ghaziabad	Severe	411↑	PM _{2.5}
GreaterNoida	Severe	412↑	PM _{2.5}
Gurugram	Very Poor	362↑	PM _{2.5}
Noida	Severe	432↑	PM _{2.5} , PM ₁₀

*Data available for 36 stations in Delhi today. # ↓, ↑ arrows indicate increase/decrease as compared to value on the previous day

Comparative status of AQI - Delhi from 01 January to 23 December 2016-2021

Category	Year	2016	2017	2018	2019	2020	2021							
								2016	2017	2018	2019	2020	2021	
	No. of days	346	357	357	358	359	358							
Good (0–50)		0	2	0	2	5	1							
Satisfactory (51–100)		25	45	53	59	95	72	108	152	159	182	227	197	
Moderate (101–200)		83	105	106	121	127	124							
Poor (201–300)		120	115	114	104	73	78							
Very Poor (301–400)		95	81	68	51	45	62	238	205	198	176	132	161	
Severe (>401)		23	9	16	21	14	21							

Comparative status of PM_{2.5} and PM₁₀ (µg/m³) running average - Delhi till December 22 (2016-2021)



Hotspots for Today:

*Details given overleaf

As per 5 pm data as data for 4 pm was not available

Delhi	Jahangirpuri, Rohini, Vivek Vihar, Wazirpur, Ashok Vihar	Gurugram	NISE Gwal Pahari, Sector-51
Faridabad	Sector-30, Sector-16A	Greater Noida	Knowledge Park - III
Ghaziabad	Indrapuram, Loni	Noida	Sector – 116, Sector – 62

Forecast by IITM:

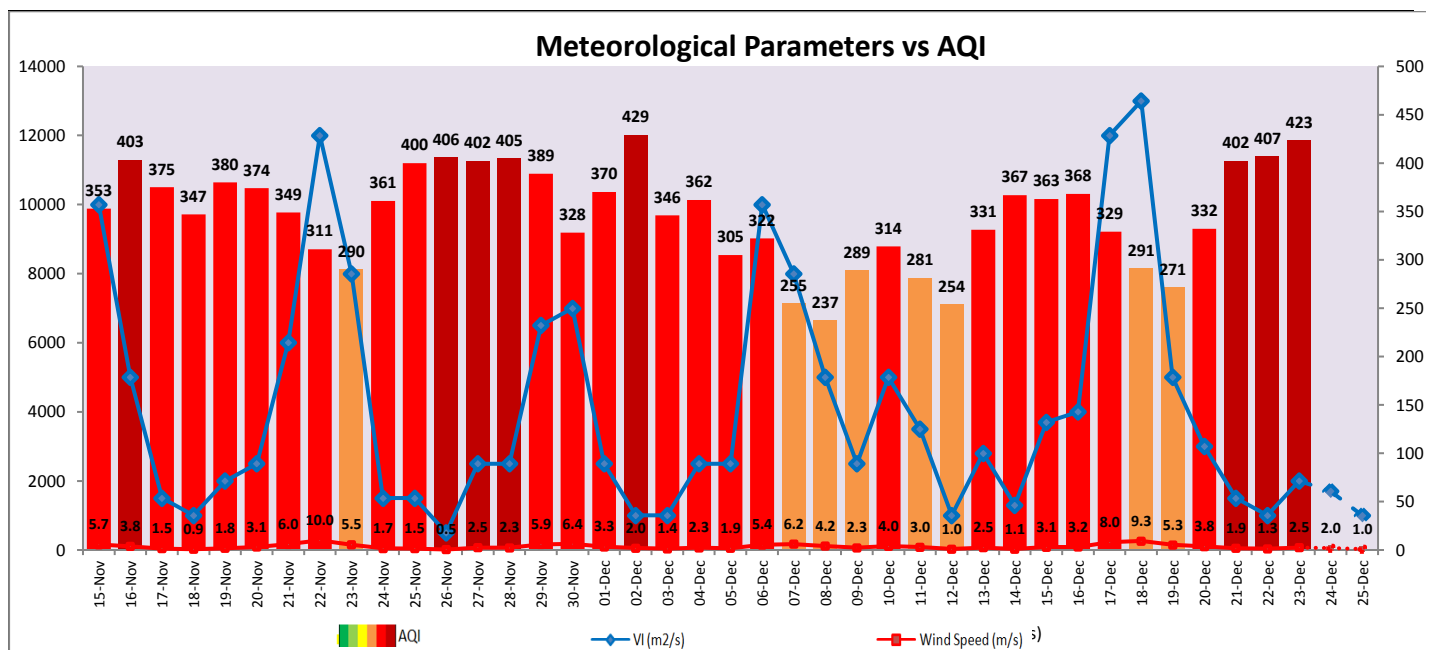
Parameters	December 24, 2021		December 25, 2021– December 26, 2021	
	Concentration	AQI Category	Concentration	AQI Category
PM ₁₀	406	Very Poor	394	Very Poor
PM _{2.5}	247	Very Poor	241	Very Poor

▪ **Wind Forecast for Delhi:**

Dates	Wind speed (at surface) in km/h		Wind speed (at 900 m) in km/h	Wind Direction	
	As per IMD (at 17:30 hrs.)	As per windy.com (at 16:00 hrs.)	As per windy.com (at 16:00hrs)	As per IMD (at 17:30hrs.)	As per windy.com at 900m
December 24, 2021	05	03	01	E	S
December 25, 2021	08	08	06	ESE	NW
December 26, 2021	08	08	18	ENE	E

▪ **IMD Alert for Tomorrow (24.12.2021):**

The air quality is likely to remain in Very Poor category on 24.12.2021 and 25.12.2021 also owing to slow/calm winds and poor ventilation conditions. The predominant surface wind is likely to be coming from East direction of Delhi having wind speed 05-08 kmph with mainly clear sky and shallow to moderate fog in the morning. Ventilation index is likely to be 1,700 m²/s.



▪ **Hotspots for Today**

As per 5 pm data as data for 4 pm was not available

City	Station Name	AQI value	Air Quality	Prominent Pollutant
Delhi	Jahangirpuri, Delhi - DPCC	479	Severe	PM _{2.5}
	Rohini, Delhi - DPCC	474	Severe	PM _{2.5}
	Vivek Vihar, Delhi - DPCC	473	Severe	PM _{2.5}
	Wazirpur, Delhi - DPCC	473	Severe	PM _{2.5}
	Ashok Vihar, Delhi - DPCC	470	Severe	PM _{2.5}
Faridabad	Sector 30, Faridabad - HSPCB	473	Severe	PM _{2.5}
	Sector- 16A, Faridabad - HSPCB	459	Severe	PM _{2.5}
Gurugram	NISE Gwal Pahari, Gurugram - IMD	372	Very Poor	PM _{2.5}
	Sector-51, Gurugram - HSPCB	370	Very Poor	PM _{2.5}
Ghaziabad	Loni, Ghaziabad - UPPCB	436	Severe	PM _{2.5}
	Indirapuram, Ghaziabad - UPPCB	408	Severe	PM _{2.5}
Greater Noida	Knowledge Park - III, Greater Noida - UPPCB	440	Severe	PM _{2.5}
Noida	Sector - 62, Noida - IMD	450	Severe	PM ₁₀
	Sector-116, Noida - UPPCB	449	Severe	PM _{2.5}