



Central Pollution Control Board

Air Quality Status for Delhi & NCR

Dated – November 23, 2021



Current Air Quality Status:

Air Quality Index (AQI) (Average of past 24 hours)

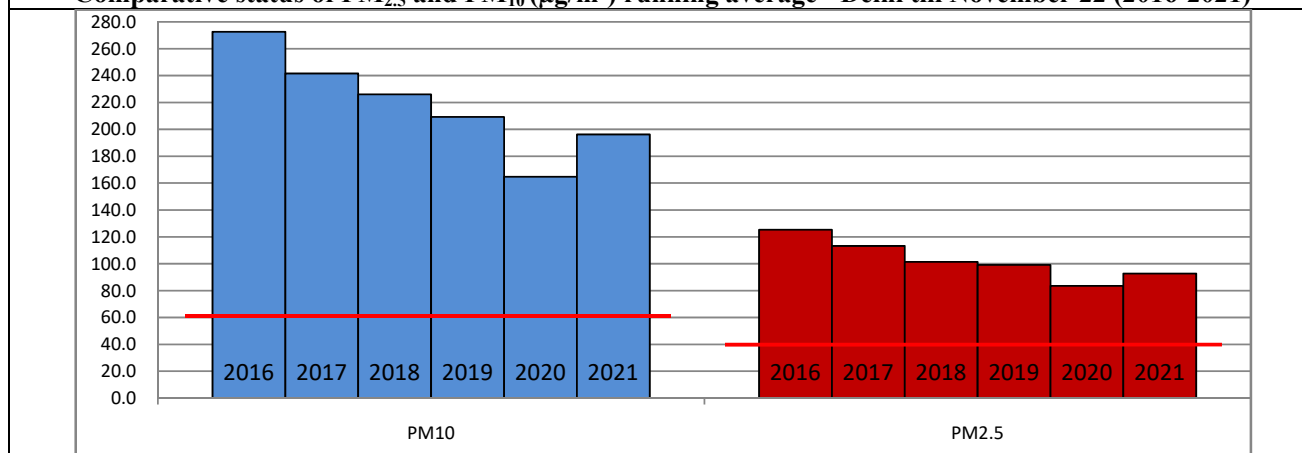
	Air Quality	AQI Value	Prominent Pollutant
Delhi	Poor	290	PM _{2.5}
Faridabad	Poor	279	PM ₁₀ , PM _{2.5}
Ghaziabad	Poor	268	PM _{2.5}
Greater Noida	Poor	255	PM _{2.5}
Gurugram	Poor	276	PM _{2.5}
Noida	Poor	252	PM ₁₀ , PM _{2.5}

*Data available for 37 stations in Delhi today. # ↑ ↓ arrows indicate increase/decrease as compared to value on the previous day

Comparative status of AQI - Delhi from 01 January to 23 November 2016-2021

Category	Year	2016	2017	2018	2019	2020	2021	2016	2017	2018	2019	2020	2021
	No. of days	316	327	327	327	328	327						
Good (0–50)		0	2	0	2	5	1						
Satisfactory (51–100)		25	45	53	58	95	72	108	150	158	175	225	197
Moderate (101–200)		83	103	105	115	125	124						
Poor (201–300)		116	105	108	93	63	70						
Very Poor (301–400)		74	64	49	43	30	46	208	177	169	152	103	130
Severe (>401)		18	8	12	16	10	14						

Comparative status of PM_{2.5} and PM₁₀ (µg/m³) running average - Delhi till November 22 (2016-2021)



* The PM values are 24 hourly averages (6 am to 6 am)

Hotspots for Today:

*Details given overleaf

Delhi	Jahangirpuri, Bawana, Vivek Vihar, Mundka, Anand Vihar	Gurugram	Sector – 51, Teri Gram
Faridabad	Sector – 11, Sector – 30	Greater Noida	Knowledge Park - V
Ghaziabad	Loni, Sanjay Nagar	Noida	Sector- 62, Sector- 125

Forecast by IITM:

Parameters	November 24, 2021		November 25, 2021– November 26, 2021	
	Concentration	AQI Category	Concentration	AQI Category
PM ₁₀	198	Moderate	242	Moderate
PM _{2.5}	103	Poor	125	Very Poor

▪ **Wind Forecast for Delhi:**

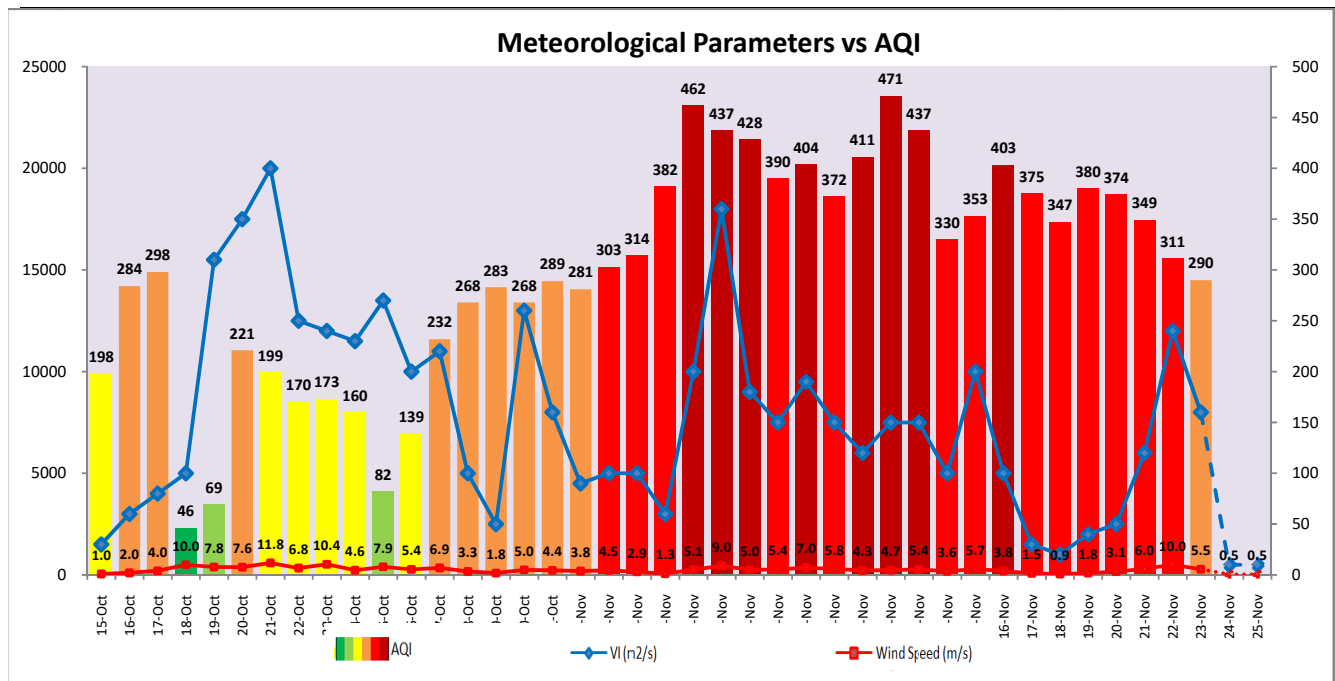
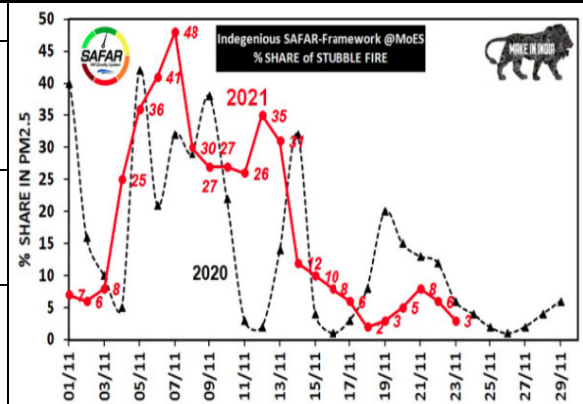
Dates	Wind speed (at surface) in km/h		Wind speed (at 900 m) in km/h	Wind Direction	
	As per IMD (at 17:30 hrs.)	As per windy.com (at 16:00 hrs.)	As per windy.com (at 16:00hrs)	As per IMD (at 17:30hrs.)	As per windy.com at 900m
November 24, 2021	05	07	04	NW	S
November 25, 2021	08	06	16	ESE	W
November 26, 2021	05	08	05	NW	SE

▪ **IMD Alert for Tomorrow (24.11.2021):**

The air quality is likely to deteriorate marginally but remain in Poor to lower end of Very Poor category. The predominant surface wind is likely to be coming from Southeast direction of Delhi with wind speed 05-10 kmph, mainly clear sky and shallow fog in the morning. Ventilation index is likely to be 500 m²/s.

▪ **Active Fire Events (AFE) s**

Date	Punjab		Haryana	
	Nos. on the day	Total since September 21	Nos. on the day	Total since September 21
22.11.2021	66	71090	91	6733
22.11.2020	46	82650	15	3964



▪ Hotspots for Today

City	Station Name	AQI value	Air Quality	Prominent Pollutant
Delhi	Jahangirpuri	325	Very Poor	PM _{2.5}
	Bawana	312	Very Poor	PM _{2.5}
	Vivek Vihar	309	Very Poor	PM _{2.5}
	Mundka	301	Very Poor	PM _{2.5}
	Anand vihar	298	Poor	PM ₁₀
Faridabad	Sector - 11	379	Very Poor	PM ₁₀
	Sector - 30	293	Poor	PM _{2.5}
Gurugram	Sector - 51	296	Poor	PM _{2.5}
	Teri Gram	276	Poor	PM _{2.5}
Ghaziabad	Loni	293	Poor	PM _{2.5}
	Sanjay Nagar	231	Poor	PM _{2.5}
Greater Noida	Knowledge Park - V	227	Poor	PM _{2.5}
Noida	Sector- 62	291	Poor	PM ₁₀
	Sector - 125	218	Poor	PM _{2.5}