



Central Pollution Control Board

Air Quality Status for Delhi & NCR

Dated – October 23, 2022



Current Air Quality Status:

Air Quality Index (AQI) (Average of past 24 hours)

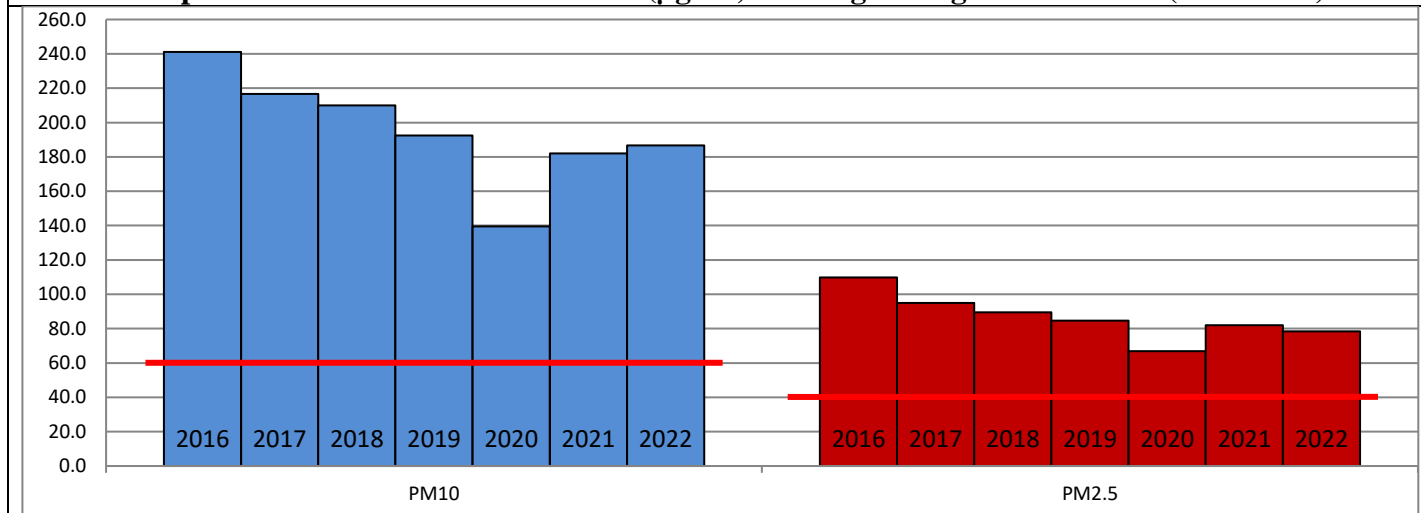
| | Air Quality | AQI Value | Prominent Pollutant |
|---------------|-------------|-----------|--------------------------------------|
| Delhi | Poor | 259 ↓ | PM ₁₀ , PM _{2.5} |
| Faridabad | Moderate | 200 ↓ | PM ₁₀ , PM _{2.5} |
| Ghaziabad | Poor | 270 ↓ | PM _{2.5} |
| Greater Noida | Poor | 202 ↓ | PM ₁₀ , PM _{2.5} |
| Gurugram | Poor | 251 ↑ | PM _{2.5} |
| Noida | Poor | 236 ↓ | PM ₁₀ , PM _{2.5} |

*Data available for 31 stations in Delhi today. # ↓ ↑ arrows indicate a decrease/increase as compared to the value on the previous day.

Comparative status of AQI - Delhi from 01 January to 23 October 2016-2022

| Category | Year | 2016 | 2017 | 2018 | 2019 | 2020 | 2021 | 2022 | 2016 | 2017 | 2018 | 2019 | 2020 | 2021 | 2022 |
|-----------------------|-------------|------|------|------|------|------|------|------|------|------|------|------|------|------|------|
| | No. of days | 285 | 296 | 296 | 296 | 297 | 296 | 296 | | | | | | | |
| Good (0–50) | | 0 | 2 | 0 | 2 | 5 | 1 | 3 | | | | | | | |
| Satisfactory (51–100) | | 24 | 45 | 53 | 58 | 95 | 80 | 65 | 110 | 150 | 157 | 175 | 224 | 194 | 160 |
| Moderate (101–200) | | 86 | 103 | 104 | 115 | 124 | 113 | 92 | | | | | | | |
| Poor (201–300) | | 114 | 102 | 103 | 86 | 54 | 63 | 114 | | | | | | | |
| Very Poor (301–400) | | 55 | 43 | 30 | 28 | 17 | 33 | 21 | 175 | 146 | 139 | 121 | 73 | 102 | 136 |
| Severe (>401) | | 6 | 1 | 6 | 7 | 2 | 6 | 1 | | | | | | | |

Comparative status of PM₁₀ and PM_{2.5} (µg/m³) running average – Till Oct 20 (2016-2022)



Hotspots for Today:

*Details given overleaf

| | | | |
|-----------|---|---------------|--------------------|
| Delhi | Anand Vihar, Mundka, North Campus-DU, NSIT Dwarka, Jahangirpuri | Ghaziabad | Loni |
| Faridabad | Sector-16A, Sector-30 | Greater Noida | Knowledge Park-III |
| Gurugram | Sector-51, Teri Gram | Noida | Sector-116 |

Forecast by IITM (Delhi):

| | Oct 24, 2022 | | Oct 25, 2022- Oct 26, 2022 | |
|-------------------|---------------|--------------|----------------------------|--------------|
| | Concentration | AQI Category | Concentration | AQI Category |
| PM ₁₀ | 350 | Poor | 280 | Poor |
| PM _{2.5} | 228 | Very Poor | 180 | Very Poor |

Wind Forecast for Delhi:

| | Wind speed (at surface) in km/h | | Wind speed (at 900 m) in km/h | Wind Direction | |
|--------------|---------------------------------|----------------------------------|--------------------------------|----------------|--------------------------|
| | As per IMD (range) | As per windy.com (at 16:00 hrs.) | As per windy.com (at 16:00hrs) | As per IMD | As per windy.com at 900m |
| Oct 24, 2022 | Upto 06 | 10 | 20 | NW | NW |
| Oct 25, 2022 | 04-12 | 09 | 37 | NW | NW |
| Oct 26, 2022 | Upto 08 | 06 | 20 | ESE | W |

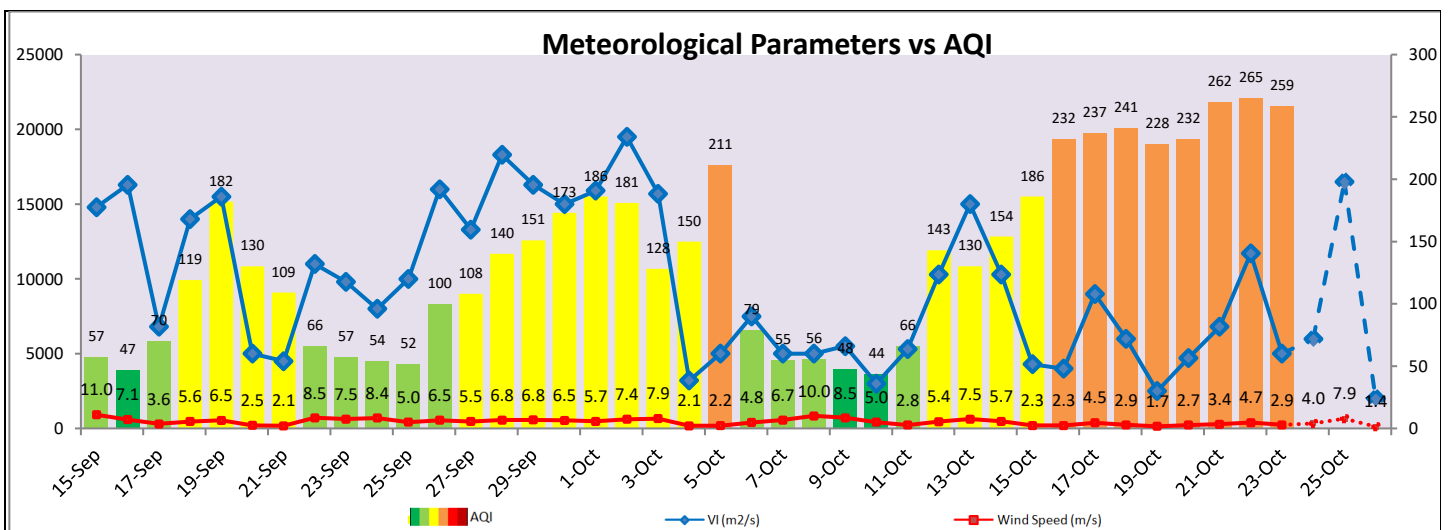
IMD Alert for Tomorrow (24.10.2022):

The air quality is likely to remain in lower end of Very Poor category on 24.10.2022 and Very Poor category on 25.10.2022. The predominant surface wind is likely to be coming from Northwest direction in Delhi with wind speed upto 06 kmph, likely to be calm during morning/evening hours and mainly clear sky tomorrow. Ventilation index is likely to be 6,000 m²/s.

Active Fire Events (AFEs):

| Date | Punjab | | Haryana | |
|------------|-----------------|--------------------------|-----------------|--------------------------|
| | Nos. on the day | Total since September 15 | Nos. on the day | Total since September 15 |
| 22.10.2022 | 582 | 3696 | 122 | 893 |
| 22.10.2021 | 1111 | 5438 | 140 | 1508 |

* As per IITM, the impact of stubble burning is negligible.



Hotspots for Today

| City | Station Name | AQI value | Air Quality | Prominent Pollutant |
|---------------|---|-----------|-------------|---------------------|
| Delhi | Anand Vihar, Delhi - DPCC | 373 | Very Poor | PM ₁₀ |
| | NSIT Dwarka, Delhi - CPCB | 315 | Very Poor | PM _{2.5} |
| | North Campus, DU, Delhi - IMD | 311 | Very Poor | PM _{2.5} |
| | Jahangirpuri, Delhi - DPCC | 292 | Poor | PM _{2.5} |
| | Mundka, Delhi - DPCC | 291 | Poor | PM _{2.5} |
| Faridabad | Sector 30, Faridabad - HSPCB | 259 | Poor | PM _{2.5} |
| | Sector- 16A, Faridabad - HSPCB | 232 | Poor | PM _{2.5} |
| Gurugram | Sector-51, Gurugram - HSPCB | 300 | Poor | PM _{2.5} |
| | Teri Gram, Gurugram - HSPCB | 276 | Poor | PM _{2.5} |
| Ghaziabad | Loni, Ghaziabad - UPPCB | 337 | Very Poor | PM _{2.5} |
| Greater Noida | Knowledge Park - III, Greater Noida - UPPCB | 205 | Poor | PM _{2.5} |
| Noida | Sector-116, Noida - UPPCB | 280 | Poor | PM _{2.5} |