



Central Pollution Control Board

Air Quality Status for Delhi & NCR

Dated – June 23, 2022



Current Air Quality Status:

Air Quality Index (AQI) (Average of past 24 hours)

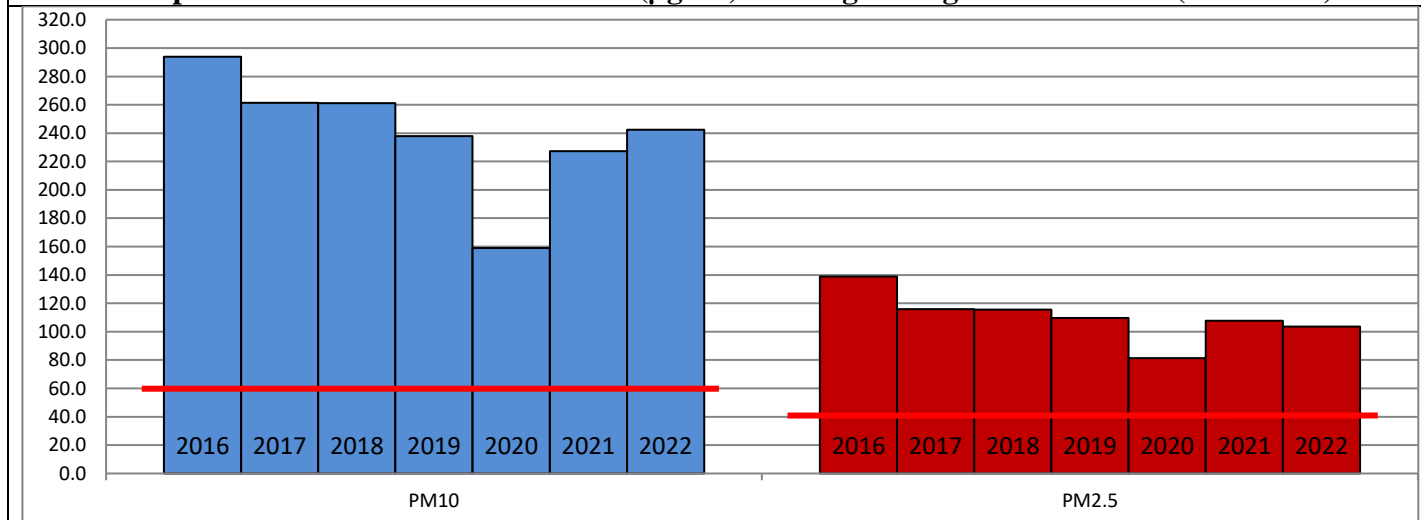
	Air Quality	AQI Value	Prominent Pollutant
Delhi	Moderate	140↑	O ₃ , PM ₁₀
Faridabad	Moderate	126↑	PM _{2.5} , PM ₁₀
Ghaziabad	Moderate	150↓	O ₃ , PM ₁₀
Greater Noida	Moderate	153↓	O ₃ , PM ₁₀
Gurugram	Moderate	160↑	PM ₁₀
Noida	Moderate	145↑	PM ₁₀

*Data available for 35 stations in Delhi today. # ↓ ↑ arrows indicate a decrease/increase as compared to the value on the previous day.

Comparative status of AQI - Delhi from 01 January to 23 June 2016-2022

Category	Year	2016	2017	2018	2019	2020	2021	2022	2016	2017	2018	2019	2020	2021	2022
	No. of days	170	174	174	174	175	174	174							
Good (0–50)		0	0	0	0	1	0	0							
Satisfactory (51–100)		0	0	1	3	33	11	7	25	50	58	73	121	78	48
Moderate (101–200)		25	50	57	70	87	67	41							
Poor (201–300)		85	88	82	68	37	57	104							
Very Poor (301–400)		54	36	28	26	15	33	21	145	124	116	101	54	96	126
Severe (>401)		6	0	6	7	2	6	1							

Comparative status of PM₁₀ and PM_{2.5} (µg/m³) running average – Till June 22 (2016-2022)



Hotspots for Today:

*Details given overleaf

Delhi	Anand Vihar, Mundka, Dwarka Sector-8, Nehru Nagar, Bawana	Gurugram	-
Faridabad	Sector-30, Sector-11	Greater Noida	Knowledge Park-III
Ghaziabad	Vasundhara, Loni	Noida	Sector-62, Sector-125

Forecast by IITM (Delhi):

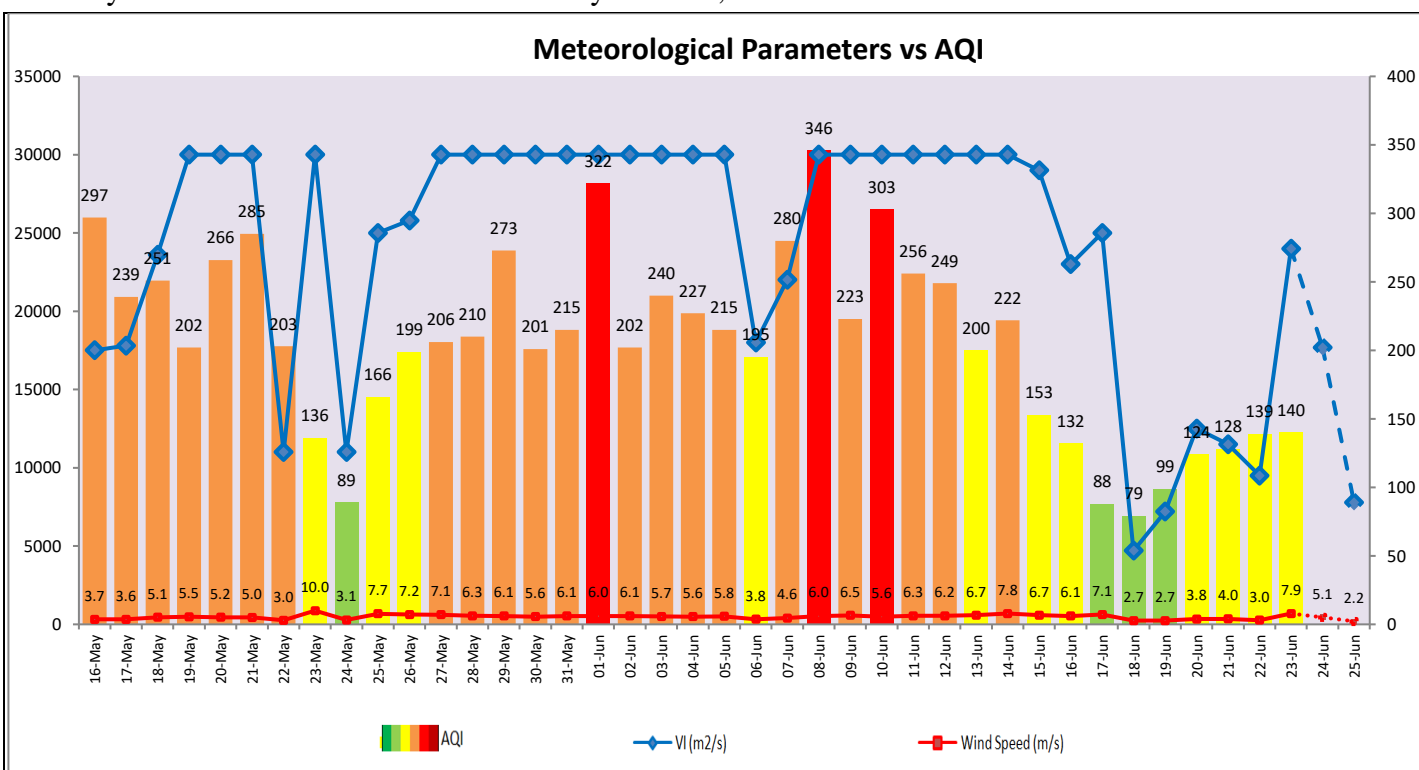
Parameters	June 24, 2022		June 25, 2022- June 26, 2022	
	Concentration	AQI Category	Concentration	AQI Category
PM ₁₀	149	Moderate	176	Moderate
PM _{2.5}	57	Satisfactory	67	Moderate

Wind Forecast for Delhi:

	Wind speed (at surface) in km/h		Wind speed (at 900 m) in km/h	Wind Direction	
	As per IMD (at 17:30 hrs.)	As per windy.com (at 16:00 hrs.)	As per windy.com (at 16:00hrs)	As per IMD (at 17:30hrs.)	As per windy.com at 900m
June 24, 2022	12	15	24	NW	NW
June 25, 2022	06	11	11	NW	W
June 26, 2022	20	04	05	E	S

IMD Alert for Tomorrow (24.06.2022):

The air quality over Delhi-NCT is likely to remain in Moderate category on 24.06.2022. The predominant surface wind is likely to be coming from Northwest direction in Delhi with wind speed 12 kmph, with mainly clear sky tomorrow. Ventilation index is likely to be 17,700 m²/s.



Hotspots for Today

City	Station Name	AQI value	Air Quality	Prominent Pollutant
Delhi	Anand Vihar, Delhi - DPCC	188	Moderate	PM ₁₀
	Mundka, Delhi - DPCC	173	Moderate	PM ₁₀
	Dwarka-Sector 8, Delhi - DPCC	171	Moderate	PM ₁₀
	Nehru Nagar, Delhi - DPCC	163	Moderate	O ₃
	Bawana, Delhi - DPCC	161	Moderate	PM ₁₀
Faridabad	Sector 30, Faridabad - HSPCB	145	Moderate	PM ₁₀
	Sector 11, Faridabad - HSPCB	142	Moderate	PM _{2.5}
Ghaziabad	Vasundhara, Ghaziabad - UPPCB	176	Moderate	O ₃
	Loni, Ghaziabad - UPPCB	153	Moderate	PM ₁₀
Greater Noida	Knowledge Park - III, Greater Noida - UPPCB	173	Moderate	O ₃
Noida	Sector - 62, Noida - IMD	148	Moderate	PM ₁₀
	Sector - 125, Noida - UPPCB	146	Moderate	PM ₁₀