



Central Pollution Control Board

Air Quality Status for Delhi & NCR

Dated – May 23, 2022



Current Air Quality Status:

Air Quality Index (AQI) (Average of past 24 hours)

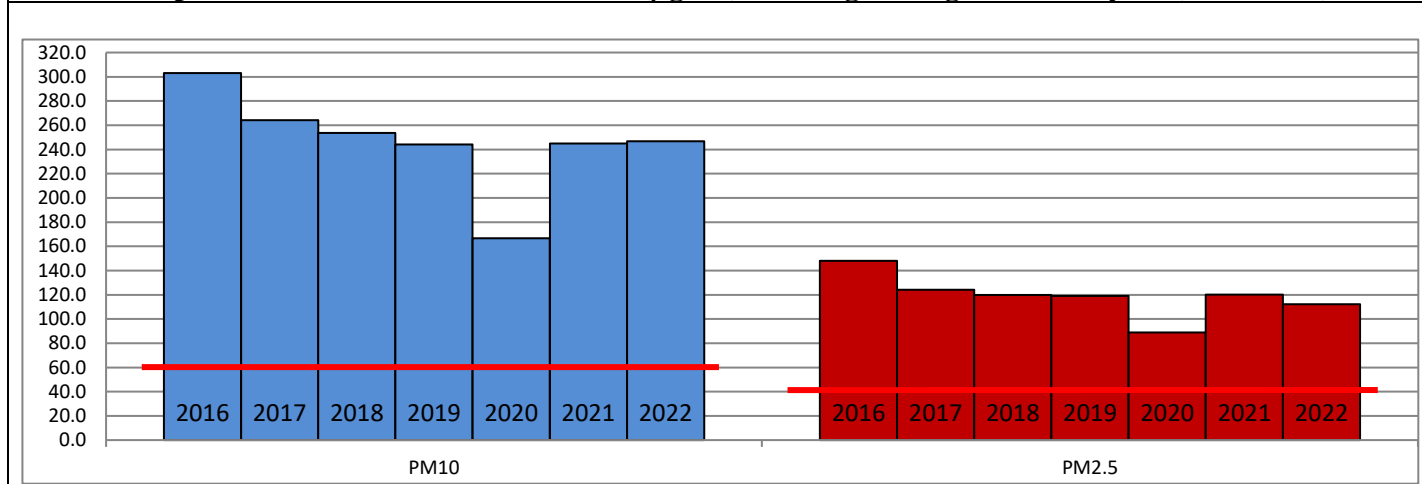
	Air Quality	AQI Value	Prominent Pollutant
Delhi	Moderate	136 ↓	PM _{2.5} , PM ₁₀
Ghaziabad	Moderate	131 ↓	PM ₁₀
Greater Noida	Moderate	134 ↓	PM ₁₀
Gurugram	Moderate	134 ↓	PM ₁₀
Noida	Moderate	146 ↓	PM ₁₀

*Data available for 33 stations in Delhi today. # ↓ ↑ arrows indicate increase/decrease as compared to value on the previous day. AQI is not calculated for today's bulletin for Faridabad.

Comparative status of AQI - Delhi from 01 January to 23 May 2016-2022

Category	Year	2016	2017	2018	2019	2020	2021	2022	2016	2017	2018	2019	2020	2021	2022
	No. of days	140	143	143	143	144	143	143							
Good (0–50)		0	0	0	0	1	0	0							
Satisfactory (51–100)		0	0	1	2	27	5	3	13	32	44	53	90	51	34
Moderate (101–200)		13	32	43	51	62	46	31							
Poor (201–300)		72	75	69	57	37	54	90							
Very Poor (301–400)		49	36	27	26	15	32	18	127	111	99	90	54	92	109
Severe (>401)		6	0	3	7	2	6	1							

Comparative status of PM_{2.5} and PM₁₀ (µg/m³) running average – Till May 22 (2016-2022)



Hotspots for Today:

*Details given overleaf

Delhi	Shadipur, Mundka, Sonia Vihar, IHBAS, Dilshad Garden, Punjabi Bagh	Gurugram	-
Faridabad	-	Greater Noida	Knowledge Park-V
Ghaziabad	Loni, Indirapuram	Noida	Sector -1, Sector-62

Forecast by IITM:

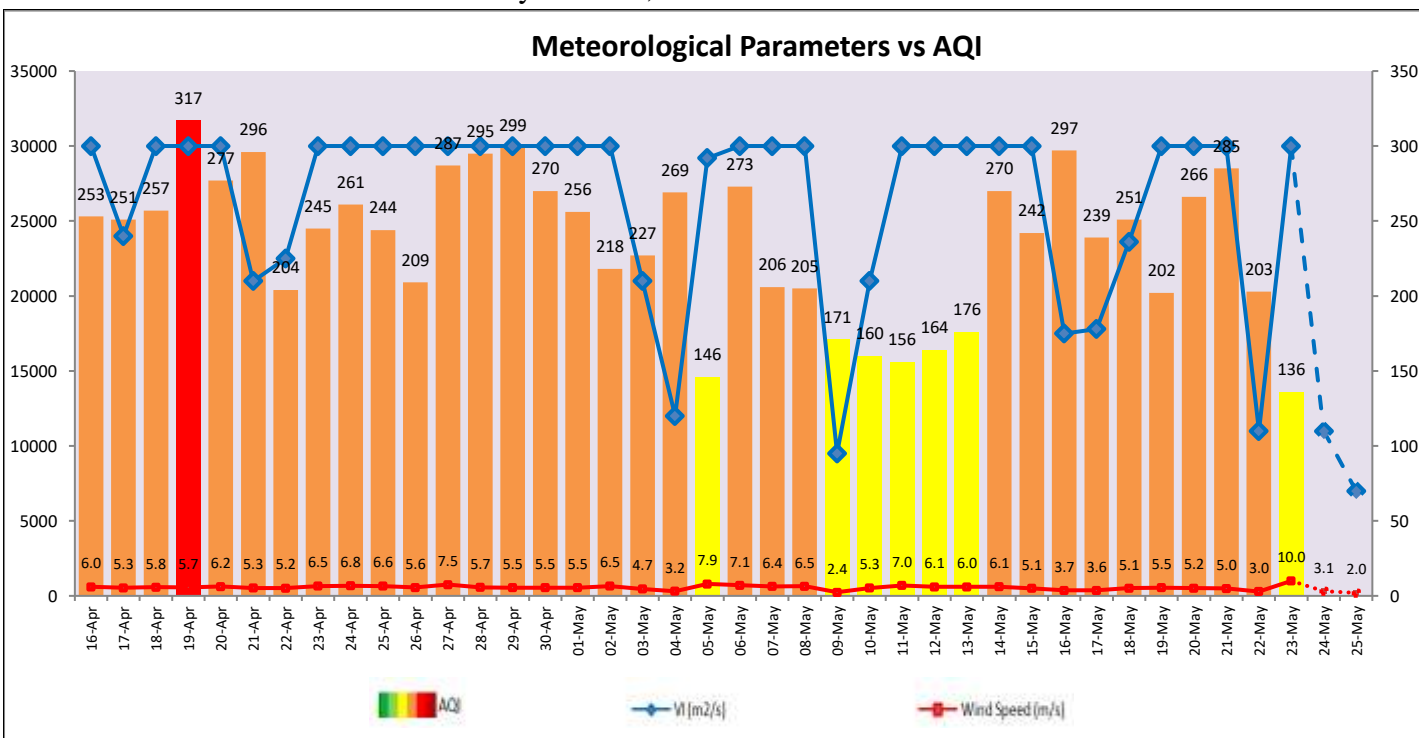
Parameters	May 24, 2022		May 25, 2022- May 26, 2022	
	Concentration	AQI Category	Concentration	AQI Category
PM ₁₀	140	Moderate	202	Moderate
PM _{2.5}	44	Satisfactory	64	Moderate

Wind Forecast for Delhi:

	Wind speed (at surface) in km/h		Wind speed (at 900 m) in km/h	Wind Direction	
	As per IMD (at 17:30 hrs.)	As per windy.com (at 16:00 hrs.)	As per windy.com (at 16:00hrs)	As per IMD (at 17:30hrs.)	As per windy.com at 900m
May 24, 2022	18	07	07	ESE	SE
May 25, 2022	10	01	10	ESE	W
May 26, 2022	08	13	25	NW	NW

IMD Alert for Tomorrow (24.05.2022):

The air quality over Delhi-NCT is likely to remain in Moderate category on and 24.05.2022. The predominant surface wind is likely to be coming from Southeast direction of Delhi with wind speed 15-18 kmph, partly cloudy sky with very light rain/thundershowers accompanied with gusty winds (speed 30- 40 kmph) tomorrow. The ventilation index is likely to be 11,000 m²/s tomorrow.



Hotspots for Today

City	Station Name	AQI value	Air Quality	Prominent Pollutant
Delhi	Shadipur, Delhi - CPCB	198	Moderate	PM _{2.5}
	Mundka, Delhi - DPCC	170	Moderate	PM ₁₀
	Sonia Vihar, Delhi - DPCC	170	Moderate	PM ₁₀
	IHBAS, Dilshad Garden, Delhi - CPCB	169	Moderate	PM ₁₀
	Punjabi Bagh, Delhi - DPCC	169	Moderate	PM ₁₀
Ghaziabad	Loni, Ghaziabad - UPPCB	197	Moderate	PM ₁₀
	Indirapuram, Ghaziabad - UPPCB	108	Moderate	PM ₁₀
Greater Noida	Knowledge Park - V, Greater Noida - UPPCB	142	Moderate	PM ₁₀
Noida	Sector-1, Noida - UPPCB	164	Moderate	PM ₁₀
	Sector - 62, Noida - IMD	158	Moderate	PM ₁₀