



Central Pollution Control Board

Air Quality Status for Delhi & NCR

Dated – February 23, 2022



Current Air Quality Status:

Air Quality Index (AQI) (Average of past 24 hours)

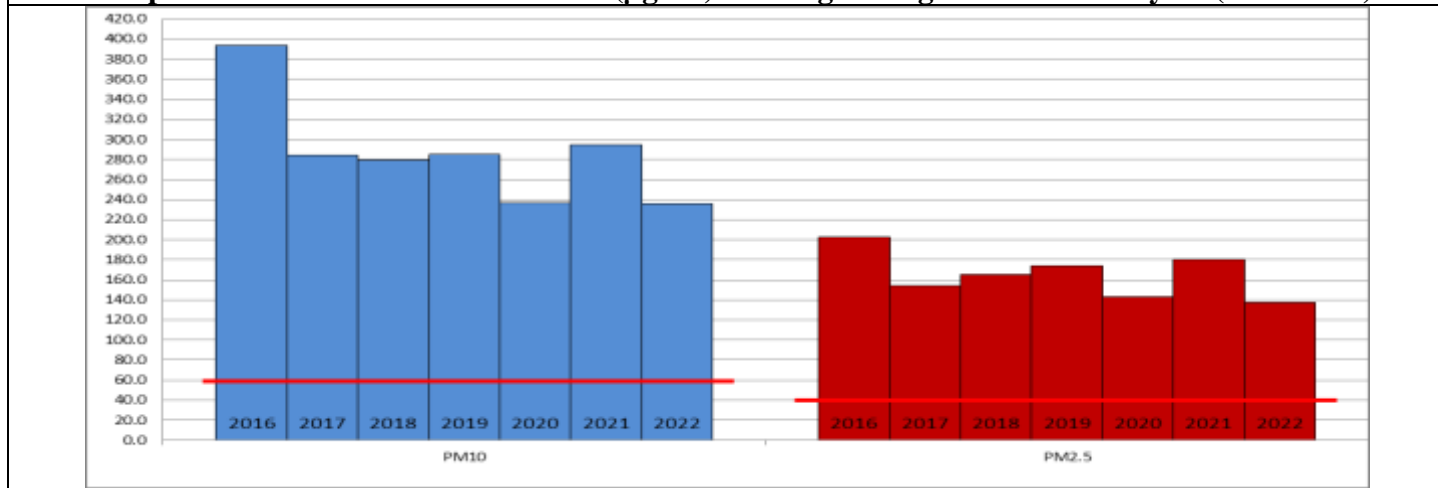
	Air Quality	AQI Value	Prominent Pollutant
Delhi	Poor	211↓	PM _{2.5}
Faridabad	Poor	204↓	PM _{2.5}
Ghaziabad	Poor	213↓	PM _{2.5}
Greater Noida	Moderate	142↓	PM ₁₀
Gurugram	Poor	237↑	PM _{2.5}
Noida	Moderate	174↓	PM ₁₀ , PM _{2.5}

*Data available for 39 stations in Delhi today. # ↓ ↑ arrows indicate increase/decrease as compared to value on the previous day

Comparative status of AQI - Delhi from 01 January to 23 February 2016-2022

Category	Year	2016	2017	2018	2019	2020	2021	2022	2016	2017	2018	2019	2020	2021	2022
		No. of days													
Good (0–50)		0	0	0	0	0	0	0							
Satisfactory (51–100)		0	0	0	0	1	0	2	1	4	4	8	7	4	12
Moderate (101–200)		1	4	4	8	6	4	10							
Poor (201–300)		13	26	26	18	30	15	25							
Very Poor (301–400)		34	24	21	21	15	29	16	53	50	50	46	47	50	42
Severe (>401)		6	0	3	7	2	6	1							

Comparative status of PM_{2.5} and PM₁₀ (µg/m³) running average – Till February 22 (2016-2022)



Hotspots for Today:

*Details given overleaf

Delhi	Chandni Chowk, Nehru Nagar, Jahangirpuri, Mundka, Narela	Gurugram	Teri Gram, Sector-51
Faridabad	Sector-30, Sector-11	Greater Noida	Knowledge Park – V
Ghaziabad	Sanjay Nagar, Vasundhara	Noida	Sector -62, Sector - 125

Forecast by IITM:

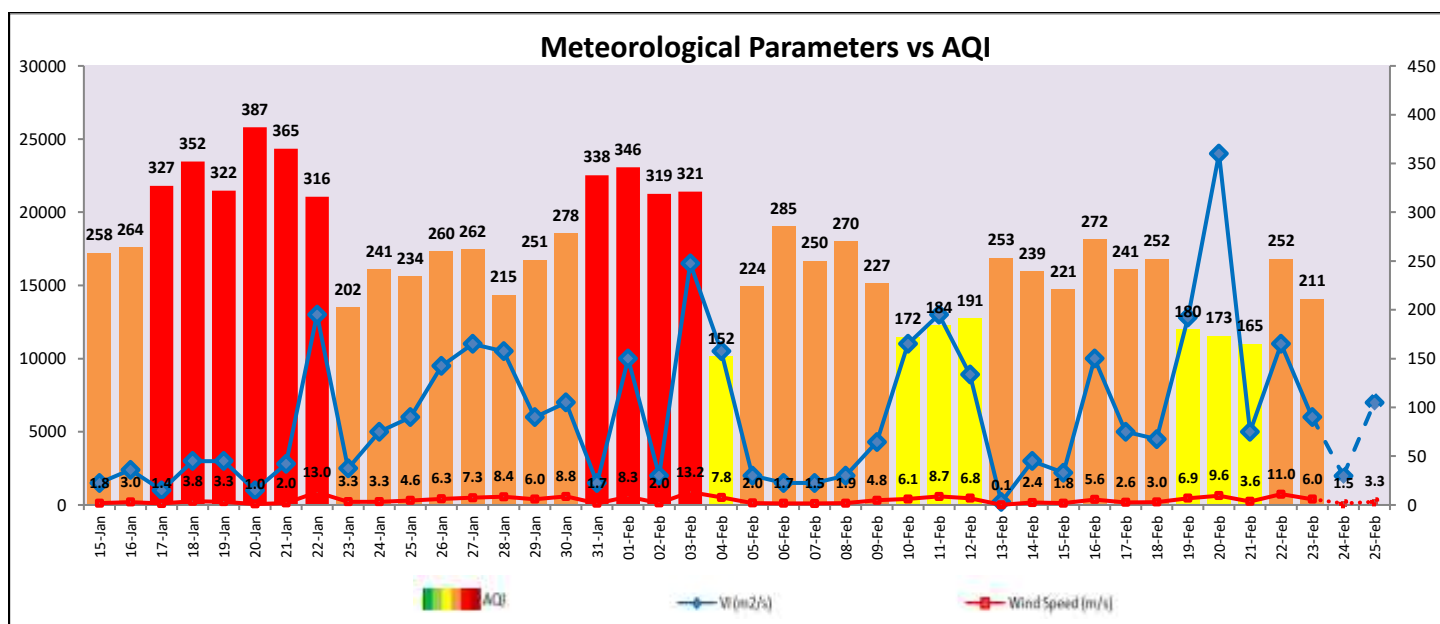
Parameters	February 24, 2022		February 25, 2022- February 26, 2022	
	Concentration	AQI Category	Concentration	AQI Category
PM ₁₀	209	Moderate	170	Moderate
PM _{2.5}	89	Moderate	73	Moderate

Wind Forecast for Delhi:

	Wind speed (at surface) in km/h		Wind speed (at 900 m) in km/h	Wind Direction	
	As per IMD (at 17:30 hrs.)	As per windy.com (at 16:00 hrs.)	As per windy.com (at 16:00hrs)	As per IMD (at 17:30hrs.)	As per windy.com at 900m
February 24, 2022	CALM	10	19	-	W
February 25, 2022	08	02	02	NE	S
February 26, 2022	08	17	31	E	E

IMD Alert for Tomorrow (24.02.2022):

The air quality is likely to remain in Poor category on 24.02.2022 and 25.02.2022. The predominant surface wind is likely to be coming from East direction of Delhi with wind speed upto 08 kmph, likely to remain calm during evening/night and partly cloudy sky tomorrow. Ventilation index is likely to be 2,000 m²/s.



Hotspots for Today

City	Station Name	AQI value	Air Quality	Prominent Pollutant
Delhi	Chandni Chowk, Delhi - IITM	288	Poor	PM _{2.5}
	Nehru Nagar, Delhi - DPCC	255	Poor	PM _{2.5}
	Jahangirpuri, Delhi - DPCC	248	Poor	PM _{2.5}
	Mundka, Delhi - DPCC	240	Poor	PM _{2.5}
	Narela, Delhi - DPCC	240	Poor	PM _{2.5}
Faridabad	Sector 11, Faridabad - HSPCB	226	Poor	PM _{2.5}
	Sector 30, Faridabad - HSPCB	217	Poor	PM _{2.5}
Gurugram	Teri Gram, Gurugram - HSPCB	257	Poor	PM _{2.5}
	Sector-51, Gurugram - HSPCB	245	Poor	PM _{2.5}
Ghaziabad	Sanjay Nagar, Ghaziabad - UPPCB	237	Poor	PM _{2.5}
	Vasundhara, Ghaziabad - UPPCB	208	Poor	PM _{2.5}
Greater Noida	Knowledge Park - V, Greater Noida - UPPCB	150	Moderate	PM ₁₀
Noida	Sector - 125, Noida - UPPCB	207	Poor	PM _{2.5}
	Sector - 62, Noida - IMD	173	Moderate	PM ₁₀