



Central Pollution Control Board

Air Quality Status for Delhi & NCR

Dated – December 22, 2023



Current Air Quality Status:

Air Quality Index (AQI) (Average of past 24 hours at 4 PM) in comparison with last two years

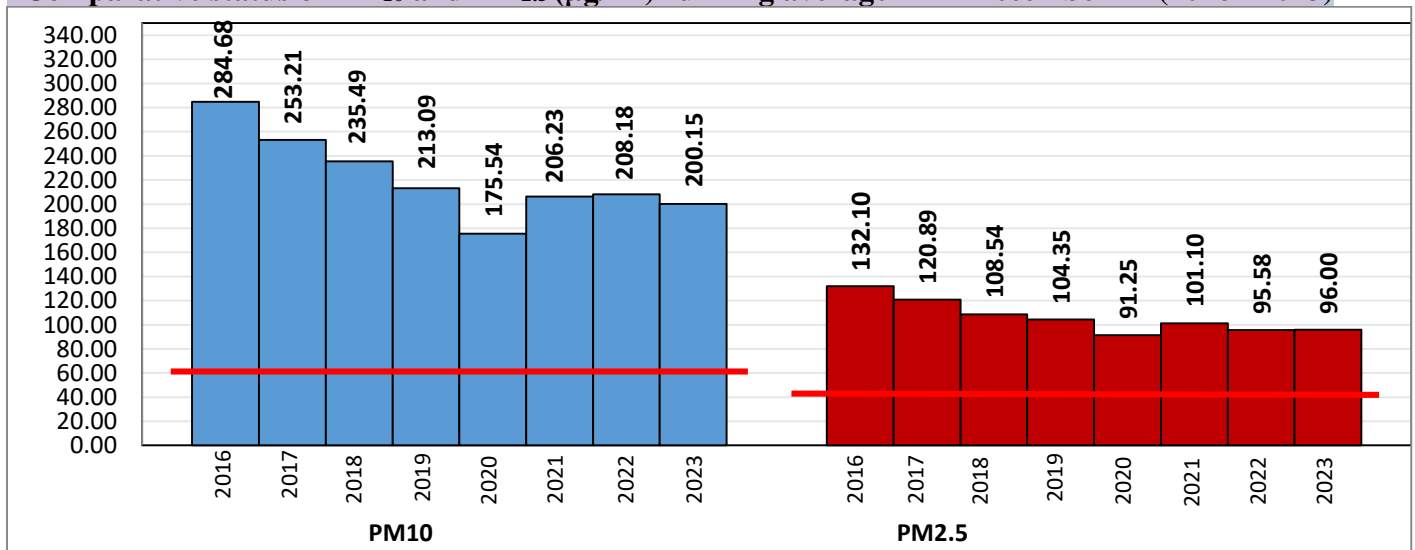
	2023			2022			2021(Covid- Year)		
	Air Quality	AQI Value	Prominent Pollutant	Air Quality	AQI Value	Prominent Pollutant	Air Quality	AQI Value	Prominent Pollutant
Delhi	Severe	409↑	PM10, PM2.5	Very Poor	342↑	PM2.5	Severe	407↑	PM2.5
Faridabad	Poor	282↑	PM2.5, PM10	Very Poor	359↑	PM2.5	Severe	406↑	PM2.5, PM10
Ghaziabad	Very Poor	376↑	PM10, PM2.5	Poor	292↑	PM2.5	Very Poor	382↓	PM2.5
Greater Noida	Very Poor	386↑	PM2.5	Very Poor	341↑	PM2.5	Very Poor	383↑	PM2.5
Gurugram	Very Poor	314↑	PM2.5	Poor	275↓	PM2.5	Very Poor	357↑	PM2.5
Noida	Very Poor	376↑	PM10, PM2.5	Very Poor	332↑	PM2.5	Very Poor	395↑	PM2.5, PM10

*Data available for 35(2023), 38(2022), 36(2021) stations in Delhi today. # ↑, ↓ arrows indicate a decrease/increase as compared to the value on the previous day.

Comparative status of AQI - Delhi from 01 January to 22 December 2016-2023

Category	Year	2016	2017	2018	2019	2020	2021	2022	2023	2016	2017	2018	2019	2020	2021	2022	2023
	No. of days	345	356	356	356	357	356	356	356	110	153	158	182	227	197	163	206
Good (0-50)		0	2	0	2	4	1	3	1								
Satisfactory (51-100)		24	45	53	59	96	72	65	60								
Moderate (101-200)		86	106	105	121	127	124	95	145								
Poor (201-300)		119	114	113	103	72	77	130	77								
Very Poor (301-400)		91	81	69	51	45	62	57	60	235	203	198	174	130	159	193	150
Severe (>401)		25	8	16	20	13	20	6	13								

Comparative status of PM₁₀ and PM_{2.5} (µg/m³) running average - Till December 21 (2016- 2023)



*Red line shows the annual average concentration standards for PM₁₀ and PM_{2.5}.

Daily Average of Particulates in Delhi (24 hourly average value; from 06:00am of 21.12.23 to 06:00 am of 22.12.23)

Date ↓ / parameter →	PM _{2.5} (µg/m ³)	PM ₁₀ (µg/m ³)
21- December -2023	253↑	414↑

Hotspots for Today: *Details given below

Delhi	ITO, Nehru Nagar, Shadipur, Anand Vihar, Jahangirpuri	Ghaziabad	Loni, Indirapuram, Vasundhara
Faridabad	New Industrial Town	Greater Noida	Knowledge Park -V
Gurugram	Teri Gram, NISE Gwal Pahari	Noida	Sector-116, Sector-62

Forecast by IITM (Delhi):

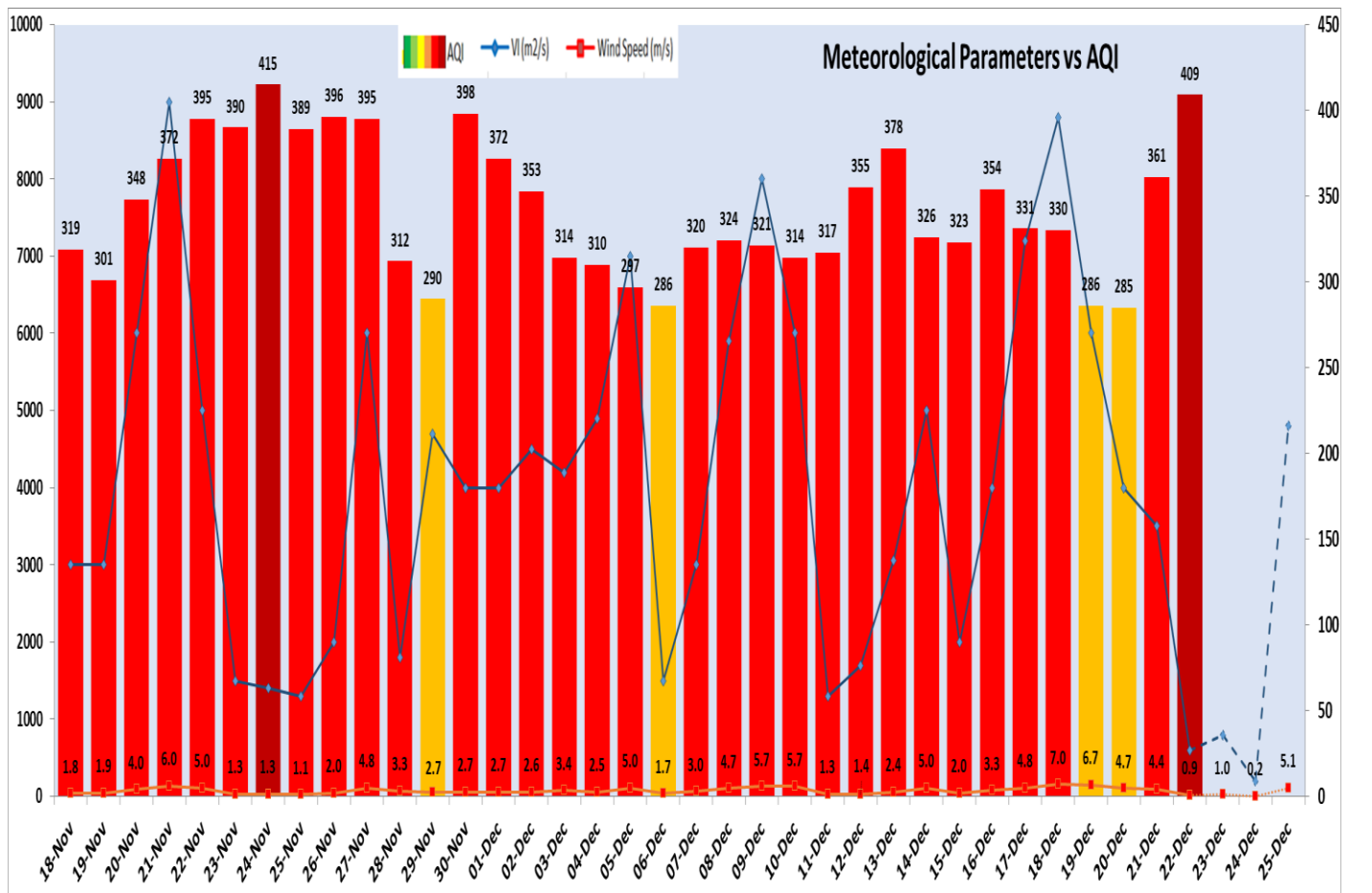
	Dec 23, 2023	Dec 24, 2023	Dec 25, 2023
AQI Category	Severe	Very Poor	Very Poor

Wind Forecast for Delhi:

	Wind speed (at surface) in km/h		Wind speed (at 900 m) in km/h	Wind Direction	
	As per IMD (range)	As per windy.com (at 16:00 hrs.)	As per windy.com (at 16:00hrs)	As per IMD	As per windy.com at 900m
Dec 23. 2023	04-10	6	02	SE	E
Dec 24. 2023	04-08	9	08	NW	NW
Dec 25. 2023	06-10	10	23	NW/W	NW

IMD Alert for Tomorrow (23.12.2023):

The air quality is likely to reach in Severe* category on 23.12.2023. The predominant surface wind is likely to be coming from Southeast directions in Delhi with wind speed 10-04 kmph during daytime and calm in evening/night, partly cloudy sky and shallow fog in the morning on 23.12.2023. Ventilation index is likely to be 800 m²/s.



Delhi Temperature in (°C)		
Date	Minimum	Maximum
19-12-2023	7.8	22.3
20-12-2023	6.2	23.5
21-12-2023	6.4	22.2
22-12-2023	6.2	23.0

▪ **Hotspots for Today**

City	Station Name	AQI value	Air Quality	Prominent Pollutant
Delhi	ITO, Delhi - CPCB	459	Severe	PM _{2.5}
	Nehru Nagar, Delhi - DPCC	459	Severe	PM _{2.5}
	Shadipur, Delhi - CPCB	455	Severe	PM ₁₀
	Anand Vihar, Delhi - DPCC	449	Severe	PM _{2.5}
	Jahangirpuri, Delhi - DPCC	448	Severe	PM _{2.5}
Faridabad	New Industrial Town, Faridabad - HSPCB	391	Very Poor	PM ₁₀
Gurugram	Teri Gram, Gurugram - HSPCB	374	Very Poor	PM _{2.5}
	NISE Gwal Pahari, Gurugram - IMD	340	Very Poor	PM _{2.5}
Ghaziabad	Loni, Ghaziabad - UPPCB	388	Very Poor	PM _{2.5}
	Indirapuram, Ghaziabad - UPPCB	380	Very Poor	PM ₁₀
	Vasundhara, Ghaziabad - UPPCB	377	Very Poor	PM _{2.5}
Greater Noida	Knowledge Park - V, Greater Noida - UPPCB	398	Very Poor	PM _{2.5}
Noida	Sector-116, Noida - UPPCB	408	Severe	PM _{2.5}
	Sector - 62, Noida - IMD	402	Severe	PM ₁₀