



# Central Pollution Control Board

## Air Quality Status for Delhi & NCR

Dated – December 22, 2022



### Current Air Quality Status:

#### Air Quality Index (AQI) (Average of past 24 hours)

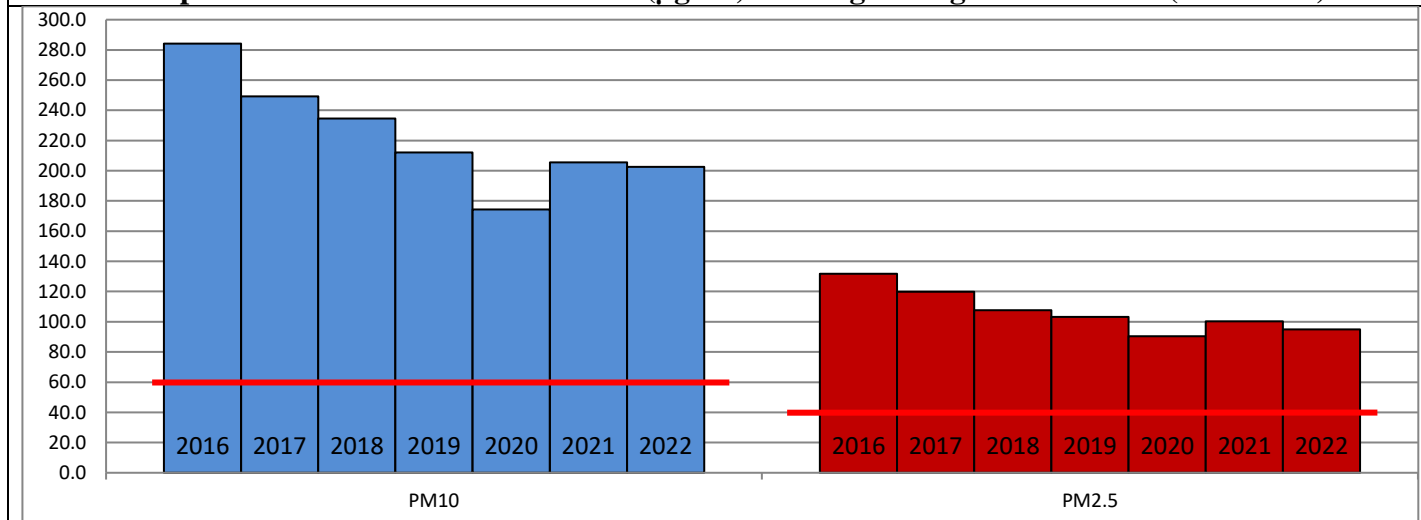
	Air Quality	AQI Value	Prominent Pollutant
Delhi	Very Poor	342 ↑	PM <sub>2.5</sub>
Faridabad	Very Poor	359 ↑	PM <sub>2.5</sub>
Ghaziabad	Poor	292 ↑	PM <sub>2.5</sub>
Greater Noida	Very Poor	341 ↑	PM <sub>2.5</sub>
Gurugram	Poor	275 ↓	PM <sub>2.5</sub>
Noida	Very Poor	332 ↑	PM <sub>2.5</sub>

\*Data available for 38 stations in Delhi today. # ↓ ↑ arrows indicate a decrease/increase as compared to the value on the previous day.

#### Comparative status of AQI - Delhi from 01 January to 22 December 2016-2022

Category	Year	2016	2017	2018	2019	2020	2021	2022	2016	2017	2018	2019	2020	2021	2022
	No. of days	345	356	356	356	357	356	356							
Good (0–50)		0	2	0	2	5	1	3							
Satisfactory (51–100)		24	45	53	59	95	81	65	110	152	159	182	227	197	163
Moderate (101–200)		86	105	106	121	127	115	95							
Poor (201–300)		120	114	114	103	72	77	130							
Very Poor (301–400)		93	81	68	50	45	62	57	235	204	197	174	130	159	193
Severe (>401)		22	9	15	21	13	20	6							

#### Comparative status of PM<sub>10</sub> and PM<sub>2.5</sub> (µg/m<sup>3</sup>) running average – Till Dec 21 (2016-2022)



#### Hotspots for Today:

\*Details given overleaf

Delhi	Patparganj, Nehru Nagar, Anand Vihar, Jahangirpuri, R K Puram	Ghaziabad	Vasundhara, Indirapuram
Faridabad	New Industrial Town, Sector-16A	Greater Noida	Knowledge Park -III
Gurugram	Teri Gram, Vikas Sadan	Noida	Sector-62, Sector-116

#### Forecast by IITM (Delhi):

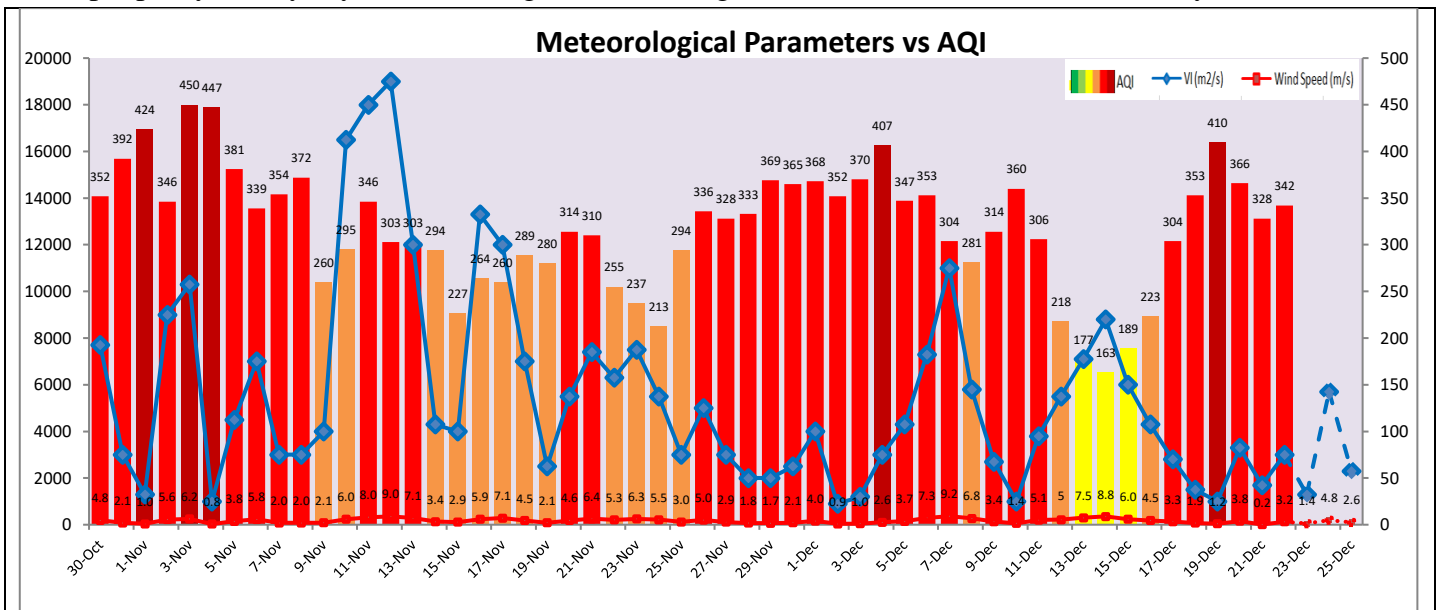
	Dec 23, 2022		Dec 24, 2022- Dec 25, 2022	
	Concentration	AQI Category	Concentration	AQI Category
PM <sub>10</sub>	277	Poor	304	Poor
PM <sub>2.5</sub>	169	Very Poor	186	Very Poor

### Wind Forecast for Delhi:

	Wind speed (at surface) in km/h		Wind speed (at 900 m) in km/h	Wind Direction	
	As per IMD (range)	As per windy.com (at 16:00 hrs.)	As per windy.com (at 16:00hrs)	As per IMD	As per windy.com at 900m
Dec 23, 2022	04-08	08	10	NW/N	E
Dec 24, 2022	06-10	09	23	N/NW	NW
Dec 25, 2022	06-08	10	11	NW	NW

### IMD Alert for Tomorrow (23.12.2022):

The air quality is likely to deteriorate marginally but remain in Very Poor category on 23.12.2022. The predominant surface wind is likely to be coming from North/Northwest direction in Delhi with wind speed 04-08 kmph, partly cloudy sky and dense fog in the morning tomorrow. Ventilation index is likely to be 1,300 m<sup>2</sup>/s.



### Hotspots for Today

City	Station Name	AQI value	Air Quality	Prominent Pollutant
Delhi	Patparganj, Delhi - DPCC	408	Severe	PM <sub>2.5</sub>
	Nehru Nagar, Delhi - DPCC	403	Severe	PM <sub>2.5</sub>
	Anand Vihar, Delhi - DPCC	397	Very Poor	PM <sub>2.5</sub>
	Jahangirpuri, Delhi - DPCC	385	Very Poor	PM <sub>2.5</sub>
	R K Puram, Delhi - DPCC	379	Very Poor	PM <sub>2.5</sub>
Faridabad	Sector- 16A, Faridabad - HSPCB	403	Severe	PM <sub>2.5</sub>
	New Industrial Town, Faridabad - HSPCB	390	Very Poor	PM <sub>10</sub>
Gurugram	Vikas Sadan, Gurugram - HSPCB	315	Very Poor	PM <sub>2.5</sub>
	Teri Gram, Gurugram - HSPCB	293	Poor	PM <sub>2.5</sub>
Ghaziabad	Vasundhara, Ghaziabad - UPPCB	369	Very Poor	PM <sub>2.5</sub>
	Indirapuram, Ghaziabad - UPPCB	301	Very Poor	PM <sub>2.5</sub>
Greater Noida	Knowledge Park - III, Greater Noida - UPPCB	352	Very Poor	PM <sub>2.5</sub>
Noida	Sector - 62, Noida - IMD	379	Very Poor	PM <sub>2.5</sub>
	Sector-116, Noida - UPPCB	375	Very Poor	PM <sub>2.5</sub>