



# Central Pollution Control Board

Air Quality Status for Delhi & NCR

Dated – November 22, 2022



## Current Air Quality Status:

### Air Quality Index (AQI) (Average of past 24 hours)

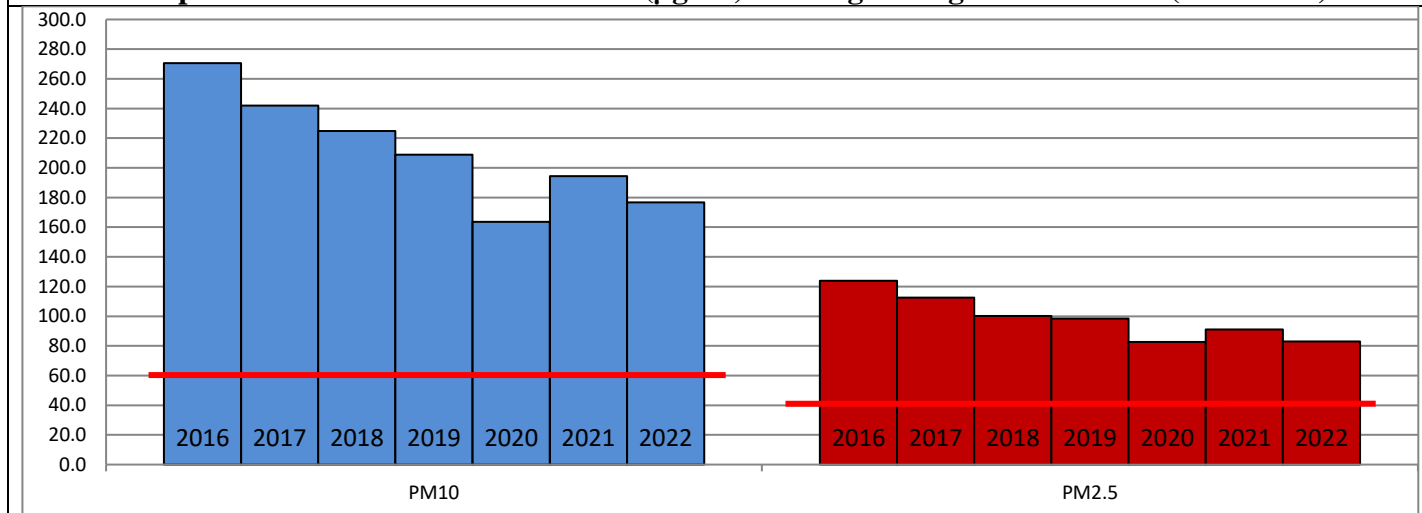
	Air Quality	AQI Value	Prominent Pollutant
Delhi	Poor	255 ↓	PM <sub>2.5</sub> , O <sub>3</sub>
Faridabad	Poor	227 ↓	PM <sub>2.5</sub>
Ghaziabad	Moderate	182 ↓	PM <sub>2.5</sub>
Greater Noida	Poor	209 ↓	PM <sub>10</sub> , PM <sub>2.5</sub>
Gurugram	Poor	242 ↓	PM <sub>2.5</sub>
Noida	Moderate	195 ↓	PM <sub>2.5</sub>

\*Data available for 35 stations in Delhi today. # ↓ ↑ arrows indicate a decrease/increase as compared to the value on the previous day.

### Comparative status of AQI - Delhi from 01 January to 22 November 2016-2022

Category	Year	2016	2017	2018	2019	2020	2021	2022	2016	2017	2018	2019	2020	2021	2022
	No. of days	315	326	326	326	327	326	326							
Good (0–50)		0	2	0	2	5	1	3							
Satisfactory (51–100)		24	45	53	58	95	81	65	110	150	158	175	225	197	160
Moderate (101–200)		86	103	105	115	125	115	92							
Poor (201–300)		116	104	108	93	62	69	124							
Very Poor (301–400)		71	64	48	42	30	46	38	205	176	168	151	102	129	166
Severe (>401)		18	8	12	16	10	14	4							

### Comparative status of PM<sub>10</sub> and PM<sub>2.5</sub> (µg/m<sup>3</sup>) running average – Till Nov 17 (2016-2022)



### Hotspots for Today:

\*Details given overleaf

Delhi	NSIT Dwarka, Nehru Nagar, Anand Vihar, Jahangirpuri, Shadipur	Ghaziabad	Vasundhara, Loni
Faridabad	Sector- 11, Sector-16A	Greater Noida	Knowledge Park-V
Gurugram	Vikas Sadan, Sector-51	Noida	Sector – 62

### Forecast by IITM (Delhi):

	Nov 23, 2022		Nov 24, 2022- Nov 25, 2022	
	Concentration	AQI Category	Concentration	AQI Category
PM <sub>10</sub>	158	Moderate	149	Moderate
PM <sub>2.5</sub>	88	Moderate	83	Moderate

## Wind Forecast for Delhi:

	Wind speed (at surface) in km/h		Wind speed (at 900 m) in km/h	Wind Direction	
	As per IMD (range)	As per windy.com (at 16:00 hrs.)	As per windy.com (at 16:00hrs)	As per IMD	As per windy.com at 900m
Nov 23, 2022	12-16	09	31	NW	NW
Nov 24, 2022	06-12	11	29	WNW	NW
Nov 25, 2022	04-06	09	23	W/NW	NW

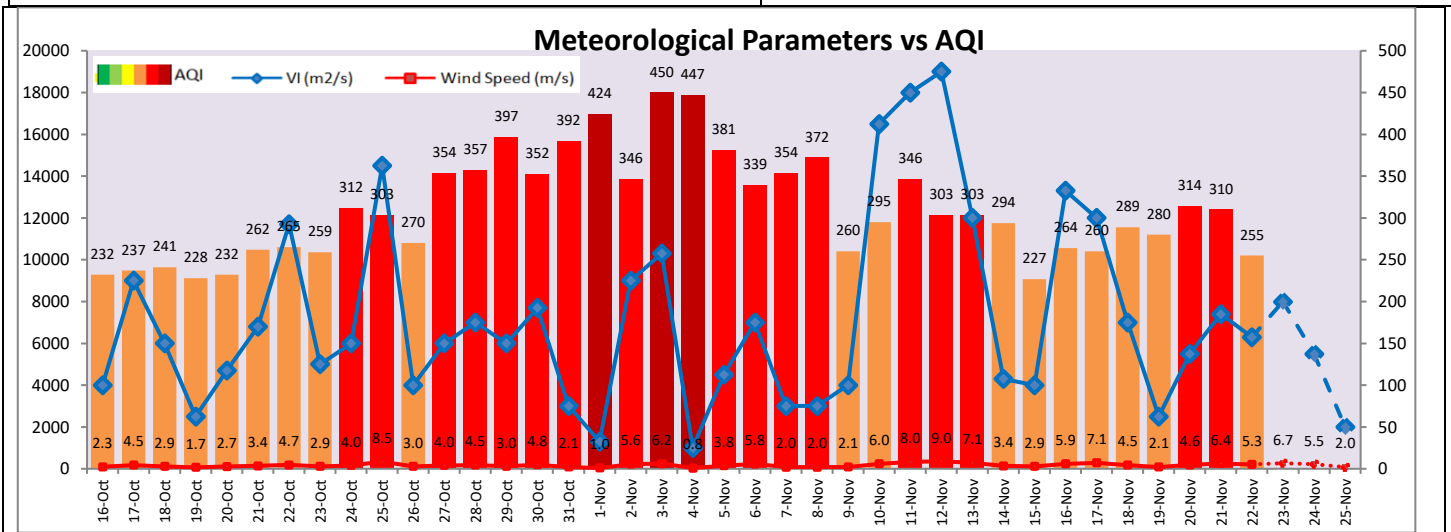
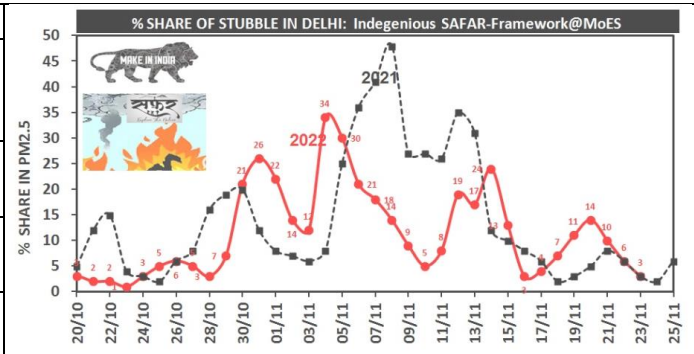
## IMD Alert for Tomorrow (23.11.2022):

The overall air quality over Delhi is likely to remain in Poor category from 23.11.2022 to 24.11.2022. The predominant surface wind is likely to be coming from Northwest direction in Delhi with wind speed 12-16 kmph, mainly clear sky and haze tomorrow. Ventilation index is likely to be 8,000 m<sup>2</sup>/s.

## Active Fire Events (AFE):

Date	Punjab		Haryana	
	Nos. on the day	Total since September 15	Nos. on the day	Total since September 15
22.11.2022	78	49604	20	3522
22.11.2021	66	71090	91	6733

\* As per IITM, the contribution of stubble burning to PM<sub>2.5</sub> in Delhi is ~03%.



## Hotspots for Today

City	Station Name	AQI value	Air Quality	Prominent Pollutant
Delhi	NSIT Dwarka, Delhi - CPCB	352	Very Poor	PM <sub>2.5</sub>
	Nehru Nagar, Delhi - DPCC	300	Poor	PM <sub>2.5</sub>
	Anand Vihar, Delhi - DPCC	299	Poor	PM <sub>10</sub>
	Shadipur, Delhi - CPCB	296	Poor	PM <sub>2.5</sub>
	Jahangirpuri, Delhi - DPCC	290	Poor	PM <sub>2.5</sub>
Faridabad	Sector 11, Faridabad - HSPCB	252	Poor	PM <sub>2.5</sub>
	Sector 30, Faridabad - HSPCB	230	Poor	PM <sub>2.5</sub>
Gurugram	Sector-51, Gurugram - HSPCB	263	Poor	PM <sub>2.5</sub>
	Vikas Sadan, Gurugram - HSPCB	244	Poor	PM <sub>2.5</sub>
Ghaziabad	Vasundhara, Ghaziabad - UPPCB	215	Poor	PM <sub>2.5</sub>
	Loni, Ghaziabad - UPPCB	201	Poor	PM <sub>2.5</sub>
Greater Noida	Knowledge Park - V, Greater Noida - UPPCB	216	Poor	PM <sub>10</sub>
Noida	Sector - 62, Noida - IMD	265	Poor	PM <sub>2.5</sub>