



Central Pollution Control Board

Air Quality Status for Delhi &NCR

Dated – November 22, 2021



Current Air Quality Status:

Air Quality Index (AQI) (Average of past 24 hours)

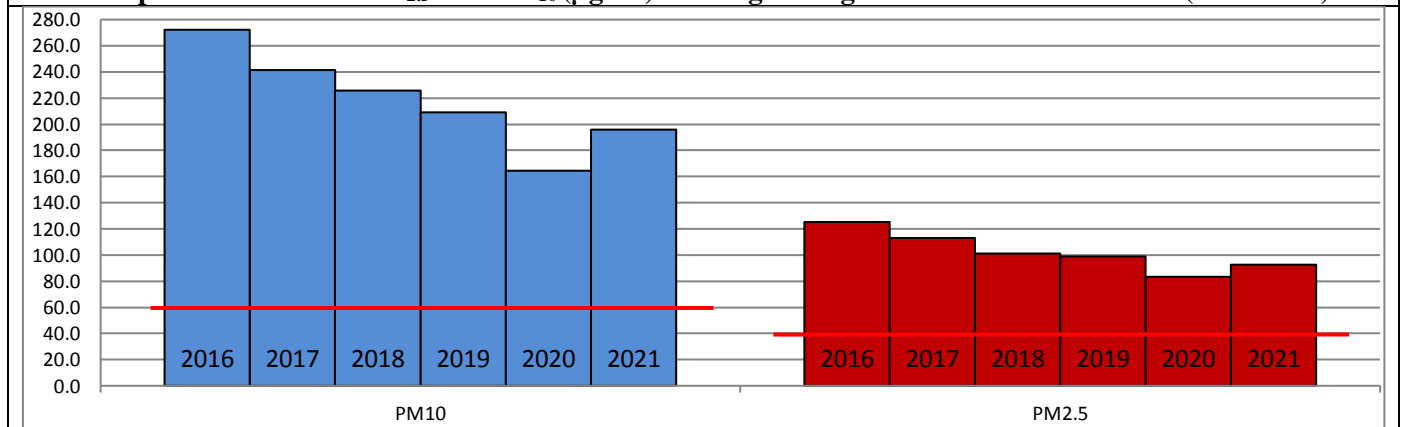
	Air Quality	AQI Value	Prominent Pollutant
Delhi	Very Poor	311 ↓	PM ₁₀ , PM _{2.5}
Faridabad	Very Poor	330 ↓	PM ₁₀ , PM _{2.5}
Ghaziabad	Poor	254 ↓	PM _{2.5}
Greater Noida	Poor	202 ↓	PM _{2.5}
Gurugram	Very Poor	310 ↓	PM _{2.5}
Noida	Poor	270 ↓	PM ₁₀ , PM _{2.5}

*Data available for 32 stations in Delhi today. # ↓, ↑ arrows indicate increase/decrease as compared to value on the previous day

Comparative status of AQI - Delhi from 01 January to 22 November 2016-2021

Category	Year No. of days	2016	2017	2018	2019	2020	2021	2016	2017	2018	2019	2020	2021
		315	326	326	326	327	326	2016	2017	2018	2019	2020	2021
Good (0-50)	0	2	0	2	5	1							
Satisfactory (51-100)	25	45	53	58	95	72	108	150	158	175	225	197	
Moderate (101-200)	83	103	105	115	125	124							
Poor (201-300)	116	104	108	93	62	69							
Very Poor (301-400)	73	64	48	42	30	46	207	176	168	151	102	129	
Severe (>401)	18	8	12	16	10	14							

Comparative status of PM_{2.5} and PM₁₀ (µg/m³) running average - Delhi till November 21 (2016-2021)



* The PM values are 24 hourly averages (6 am to 6 am)

Hotspots for Today:

*Details given overleaf

Delhi	Bawana, Mundka, Rohini, Vivek Vihar, Anand Vihar	Gurugram	Teri Gram, Vikas Sadan
Faridabad	Sector 11, Sector- 30	Greater Noida	Knowledge Park –III
Ghaziabad	Vasundhara, Loni	Noida	Sector – 62, Sector-125

Forecast by IITM:

Parameters	November 23, 2021		November 24, 2021– November 25, 2021	
	Concentration	AQI Category	Concentration	AQI Category
PM ₁₀	224	Moderate	274	Poor
PM _{2.5}	125	Very Poor	153	Very Poor

Wind Forecast for Delhi:

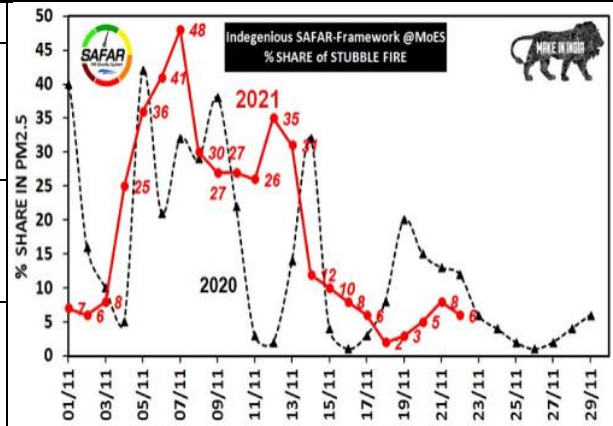
Dates	Wind speed (at surface) in km/h		Wind speed (at 900 m) in km/h	Wind Direction	
	As per IMD (at 17:30 hrs.)	As per windy.com (at 16:00 hrs.)	As per windy.com (at 16:00hrs)	As per IMD (at 17:30hrs.)	As per windy.com at 900m
November 23, 2021	12	10	26	NW	W
November 24, 2021	CALM	09	11	-	E
November 25, 2021	06	06	05	SE	SW

IMD Alert for Tomorrow (23.11.2021):

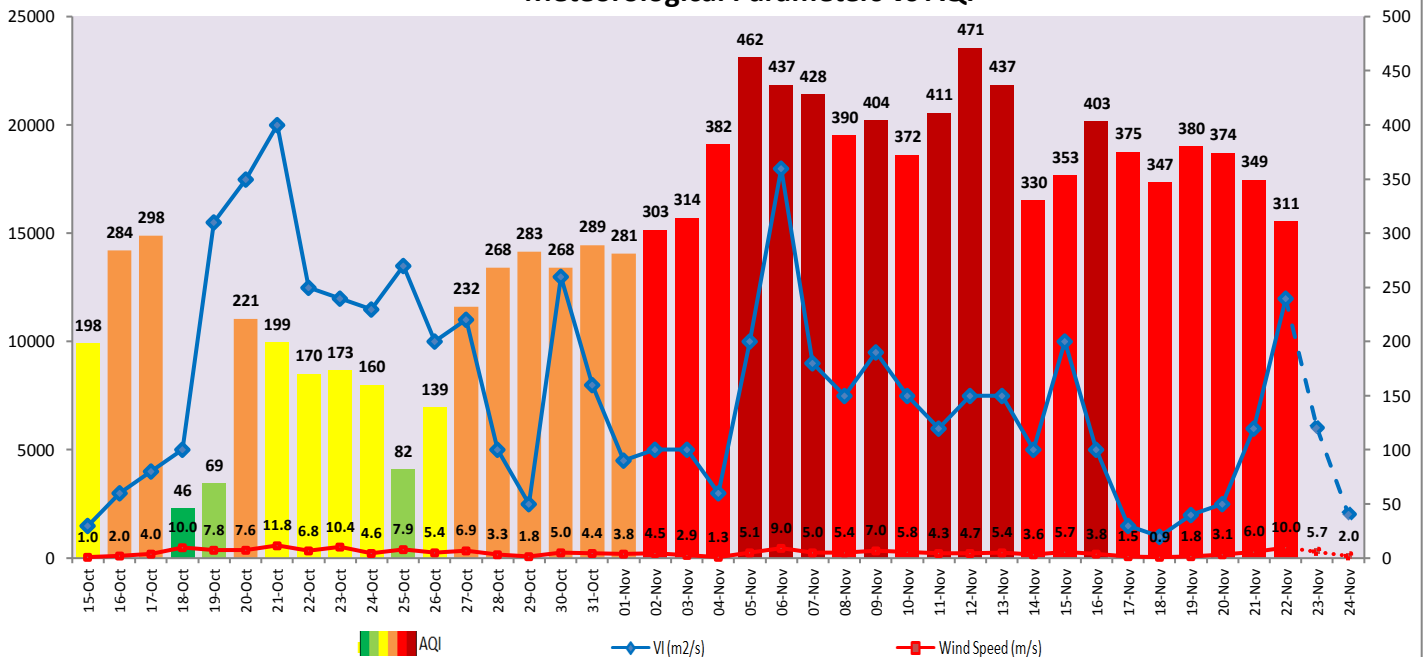
The air quality is likely to remain in Moderate to Poor category on 23.11.2021 due to relatively stronger winds are favourable for better dispersion of pollutants. The predominant surface wind is likely to be coming from Northwest direction of Delhi with wind speed 08 kmph and remain calm in the evening/night, mainly clear sky and mist in the morning. Ventilation index is likely to be 6,000 m²/s.

Active Fire Events (AFEs)

Date	Punjab		Haryana	
	Nos. on the day	Total since September 21	Nos. on the day	Total since September 21
21.11.2021	168	71024	178	6642
21.11.2020	457	82604	65	3949



Meteorological Parameters vs AQI



▪ **Hotspots for Today**

City	Station Name	AQI value	Air Quality	Prominent Pollutant
Delhi	Vivek Vihar, Delhi - DPCC	349	Very Poor	PM ₁₀
	Anand Vihar, Delhi - DPCC	346	Very Poor	PM ₁₀
	Bawana, Delhi - DPCC	337	Very Poor	PM _{2.5}
	Mundka, Delhi - DPCC	336	Very Poor	PM _{2.5}
	Rohini, Delhi - DPCC	333	Very Poor	PM _{2.5}
Faridabad	Sector 11, Faridabad - HSPCB	332	Very Poor	PM ₁₀
	Sector 30, Faridabad - HSPCB	310	Very Poor	PM _{2.5}
Gurugram	Teri Gram, Gurugram - HSPCB	336	Very Poor	PM _{2.5}
	Vikas Sadan, Gurugram - HSPCB	315	Very Poor	PM _{2.5}
Ghaziabad	Loni, Ghaziabad - UPPCB	318	Very Poor	PM _{2.5}
	Vasundhara, Ghaziabad - UPPCB	254	Poor	PM _{2.5}
Greater Noida	Knowledge Park - III, Greater Noida - UPPCB	204	Poor	PM _{2.5}
Noida	Sector - 62, Noida - IMD	323	Very Poor	PM ₁₀
	Sector - 125, Noida - UPPCB	288	Poor	PM _{2.5}