



Central Pollution Control Board

Air Quality Status for Delhi & NCR

Dated – October 22, 2022



Current Air Quality Status:

Air Quality Index (AQI) (Average of past 24 hours)

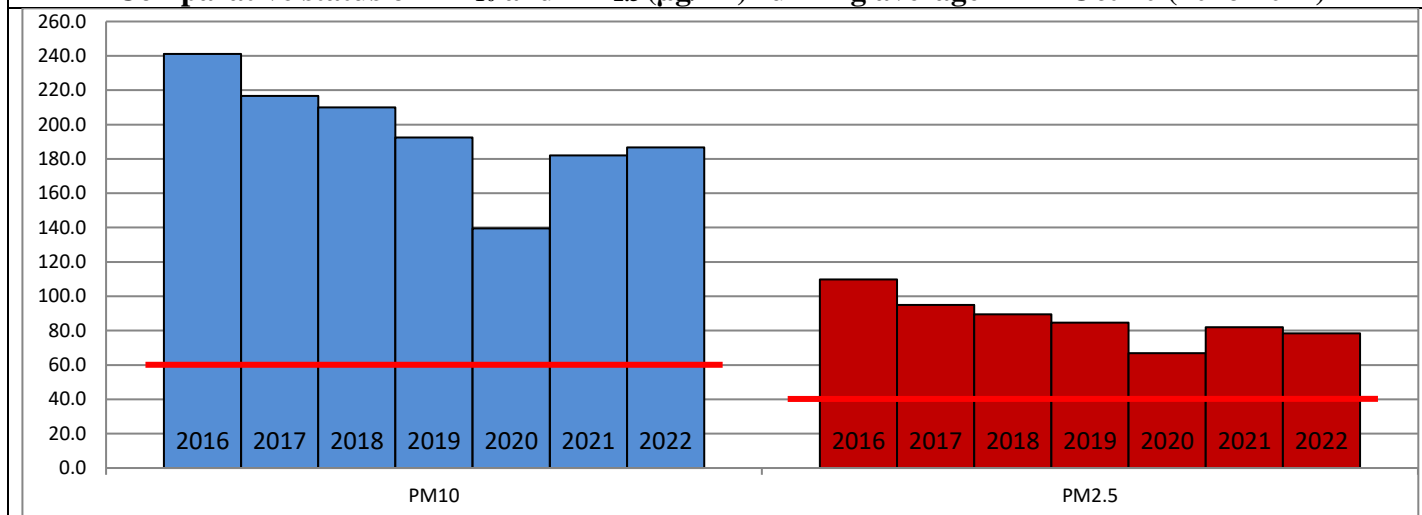
	Air Quality	AQI Value	Prominent Pollutant
Delhi	Poor	265 ↑	PM ₁₀
Faridabad	Poor	280 ↓	PM ₁₀ , PM _{2.5}
Ghaziabad	Very Poor	312 ↑	PM ₁₀ , PM _{2.5}
Greater Noida	Poor	261 ↓	PM ₁₀
Gurugram	Poor	206 ↓	PM _{2.5} , O ₃
Noida	Poor	290 ↑	PM ₁₀ , PM _{2.5}

*Data available for 35 stations in Delhi today. # ↓ ↑ arrows indicate a decrease/increase as compared to the value on the previous day.

Comparative status of AQI - Delhi from 01 January to 22 October 2016-2022

Category	Year	2016	2017	2018	2019	2020	2021	2022	2016	2017	2018	2019	2020	2021	2022
	No. of days	284	295	295	295	296	295	295							
Good (0–50)		0	2	0	2	5	1	3							
Satisfactory (51–100)		24	45	53	58	95	80	65	110	150	157	175	224	193	160
Moderate (101–200)		86	103	104	115	124	112	92							
Poor (201–300)		114	102	102	85	54	63	113							
Very Poor (301–400)		54	42	30	28	16	33	21	174	145	138	120	72	102	135
Severe (>401)		6	1	6	7	2	6	1							

Comparative status of PM₁₀ and PM_{2.5} (µg/m³) running average – Till Oct 20 (2016-2022)



Hotspots for Today:

*Details given overleaf

Delhi	Anand Vihar, Mundka, Shadipur, Wazirpur, NSIT Dwarka	Ghaziabad	Loni
Faridabad	New Industrial Town, Sector-11	Greater Noida	Knowledge Park-V
Gurugram	Sector-51, Teri Gram	Noida	Sector-116, Sector-125

Forecast by IITM (Delhi):

	Oct 23, 2022		Oct 24, 2022- Oct 25, 2022	
	Concentration	AQI Category	Concentration	AQI Category
PM ₁₀	237	Moderate	246	Moderate
PM _{2.5}	110	Poor	164	Very Poor

Wind Forecast for Delhi:

	Wind speed (at surface) in km/h		Wind speed (at 900 m) in km/h	Wind Direction	
	As per IMD (range)	As per windy.com (at 16:00 hrs.)	As per windy.com (at 16:00hrs)	As per IMD	As per windy.com at 900m
Oct 23, 2022	Upto 10	09	19	N	NW
Oct 24, 2022	08-12	10	18	NNW	NW
Oct 25, 2022	Upto 08	09	37	E	NW

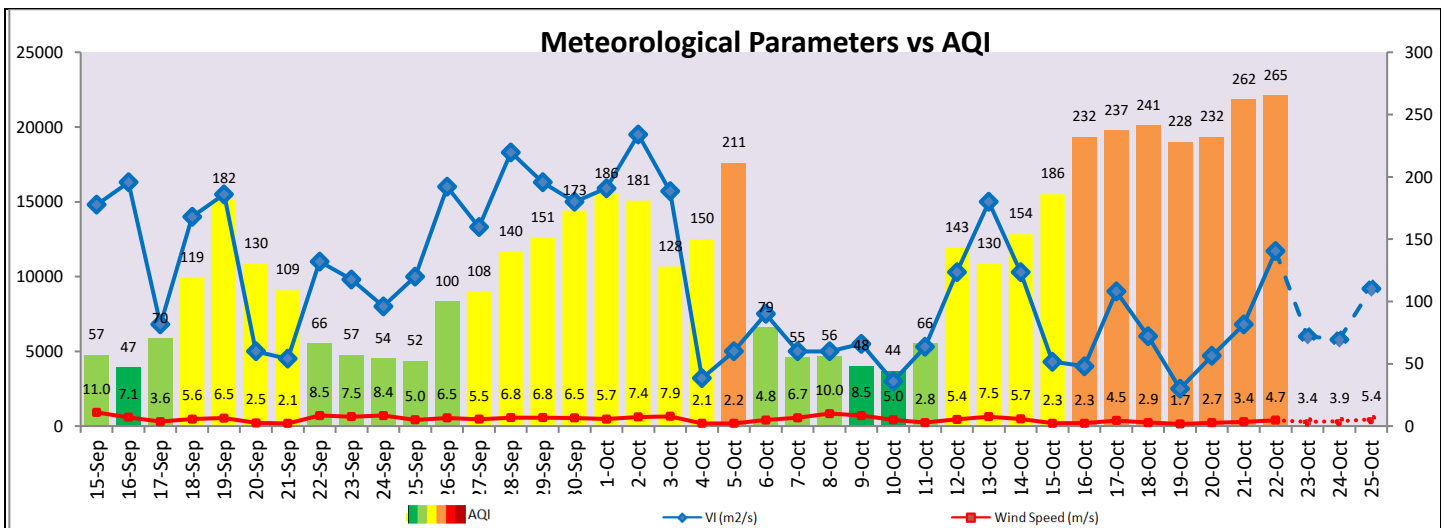
IMD Alert for Tomorrow (23.10.2022):

The air quality is likely to remain in Very Poor category on 23.10.2022 to 25.10.2022. The predominant surface wind is likely to be coming from North direction in Delhi with wind speed upto 10 kmph, likely to be calm during morning/evening hours and mainly clear sky tomorrow. Ventilation index is likely to be 6,000 m²/s.

Active Fire Events (AFE):

Date	Punjab		Haryana	
	Nos. on the day	Total since September 15	Nos. on the day	Total since September 15
21.10.2022	101	3144	25	771
21.10.2021	393	4327	107	1368

* As per IITM, the impact of stubble burning is negligible.



Hotspots for Today

City	Station Name	AQI value	Air Quality	Prominent Pollutant
Delhi	Anand Vihar, Delhi - DPCC	415	Severe	PM ₁₀
	NSIT Dwarka, Delhi - CPCB	332	Very Poor	PM ₁₀
	Shadipur, Delhi - CPCB	332	Very Poor	PM ₁₀
	Wazirpur, Delhi - DPCC	318	Very Poor	PM ₁₀
	Mundka, Delhi - DPCC	314	Very Poor	PM ₁₀
Faridabad	Sector 11, Faridabad - HSPCB	315	Very Poor	PM ₁₀
	New Industrial Town, Faridabad - HSPCB	287	Poor	PM ₁₀
Gurugram	Sector-51, Gurugram - HSPCB	358	Very Poor	PM _{2.5}
	Teri Gram, Gurugram - HSPCB	217	Poor	PM _{2.5}
Ghaziabad	Loni, Ghaziabad - UPPCB	357	Very Poor	PM _{2.5}
Greater Noida	Knowledge Park - V, Greater Noida - UPPCB	281	Poor	PM ₁₀
Noida	Sector-116, Noida - UPPCB	314	Very Poor	PM ₁₀
	Sector - 125, Noida - UPPCB	296	Poor	PM ₁₀