



Central Pollution Control Board

Air Quality Status for Delhi & NCR

Dated – May 22, 2022



Current Air Quality Status:

Air Quality Index (AQI) (Average of past 24 hours)

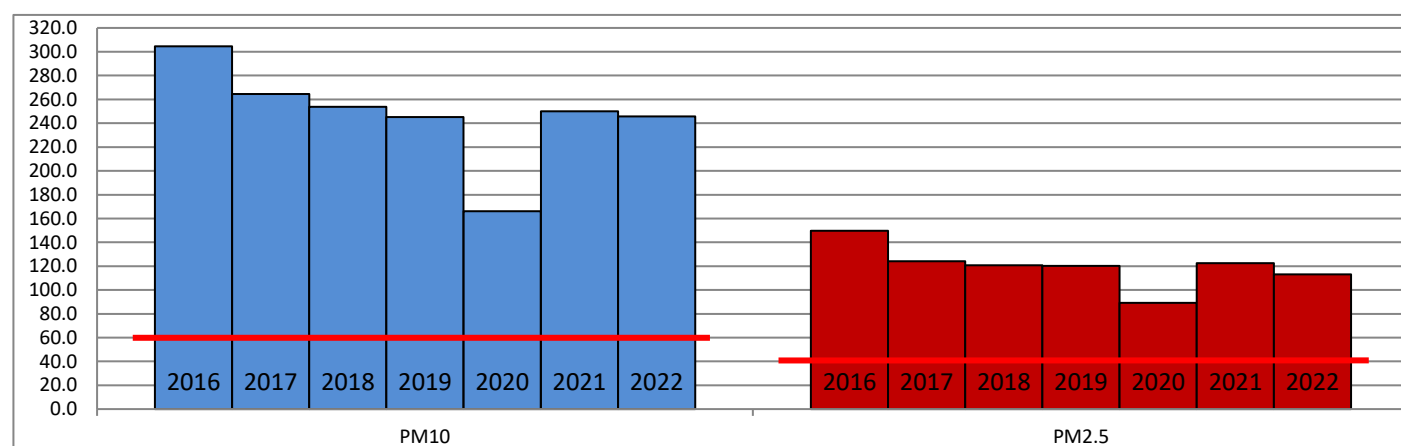
	Air Quality	AQI Value	Prominent Pollutant
Delhi	Poor	203 ↓	PM _{2.5} , PM ₁₀ , O ₃
Faridabad	Poor	203 ↓	PM _{2.5} , PM ₁₀
Ghaziabad	Poor	205 ↓	PM ₁₀ , O ₃
Greater Noida	Poor	212	PM ₁₀ , O ₃
Gurugram	Moderate	163 ↓	PM ₁₀
Noida	Poor	209 ↓	PM ₁₀

*Data available for 34 stations in Delhi today. # ↑ ↓ arrows indicate increase/decrease as compared to value on the previous day.

Comparative status of AQI - Delhi from 01 January to 22 May 2016-2022

Category	Year	2016	2017	2018	2019	2020	2021	2022	2016	2017	2018	2019	2020	2021	2022
	No. of days	139	142	142	142	143	142	142							
Good (0–50)		0	0	0	0	1	0	0							
Satisfactory (51–100)		0	0	1	2	27	5	3	13	32	44	53	89	51	33
Moderate (101–200)		13	32	43	51	61	46	30							
Poor (201–300)		71	74	69	56	37	53	90							
Very Poor (301–400)		49	36	26	26	15	32	18	126	110	98	89	54	91	109
Severe (>401)		6	0	3	7	2	6	1							

Comparative status of PM_{2.5} and PM₁₀ (µg/m³) running average – Till May 18 (2016-2022)



Hotspots for Today:

*Details given overleaf

Delhi	Anand Vihar, JLN Stadium, Mundka, DTU, Patparganj	Gurugram	-
Faridabad	New Industrial Town, Sector-30	Greater Noida	Knowledge Park-III
Ghaziabad	Loni, Vasundhara	Noida	Sector -125, Sector-62

Forecast by IITM:

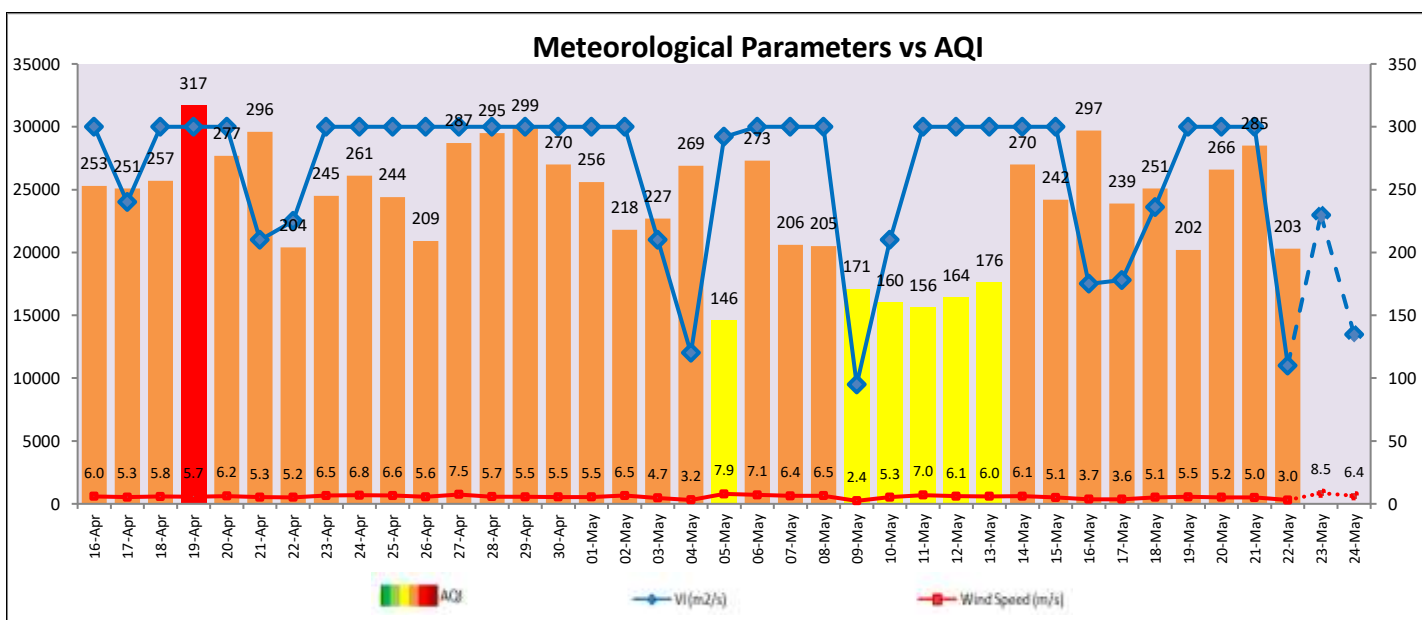
Parameters	May 23, 2022		May 24, 2022- May 25, 2022	
	Concentration	AQI Category	Concentration	AQI Category
PM ₁₀	211	Moderate	164	Moderate
PM _{2.5}	59	Satisfactory	46	Satisfactory

Wind Forecast for Delhi:

	Wind speed (at surface) in km/h		Wind speed (at 900 m) in km/h	Wind Direction	
	As per IMD (at 17:30 hrs.)	As per windy.com (at 16:00 hrs.)	As per windy.com (at 16:00hrs)	As per IMD (at 17:30hrs.)	As per windy.com at 900m
May 23, 2022	32	21	43	NE	SE
May 24, 2022	24	12	11	ESE	E
May 25, 2022	08	14	08	ESE	E

IMD Alert for Tomorrow (23.05.2022):

The air quality is likely to remain in Lower end of Poor category on 23.05.2022 and 24.05.2022. The predominant surface wind is likely to be coming from East-South-East and Northeast direction of Delhi with wind speed 28-32 kmph, generally cloudy sky, light rain/thundershowers accompanied with squal (speed 50-60 kmph) tomorrow. **Long range transported dust will also impact air quality over parts of Rajasthan, Gujarat, MP and NCR during next two days.** The ventilation index is likely to be 23,000 m²/s tomorrow.



Hotspots for Today

City	Station Name	AQI value	Air Quality	Prominent Pollutant
Delhi	Anand Vihar, Delhi - DPCC	275	Poor	PM ₁₀
	Jawaharlal Nehru Stadium, Delhi - DPCC	270	Poor	PM ₁₀
	Mundka, Delhi - DPCC	269	Poor	PM ₁₀
	DTU, Delhi - CPCB	268	Poor	PM _{2.5}
	Patparganj, Delhi - DPCC	266	Poor	PM ₁₀
Faridabad	New Industrial Town, Faridabad - HSPCB	254	Poor	PM ₁₀
	Sector 30, Faridabad - HSPCB	206	Poor	PM ₁₀
Ghaziabad	Loni, Ghaziabad - UPPCB	276	Poor	PM ₁₀
	Vasundhara, Ghaziabad - UPPCB	223	Poor	PM ₁₀
Greater Noida	Knowledge Park - III, Greater Noida - UPPCB	215	Poor	O ₃
Noida	Sector - 125, Noida - UPPCB	237	Poor	PM ₁₀
	Sector - 62, Noida - IMD	217	Poor	PM ₁₀