



Central Pollution Control Board

Air Quality Status for Delhi &NCR

Dated – January 22, 2022



Current Air Quality Status:

Air Quality Index (AQI) (Average of past 24 hours)

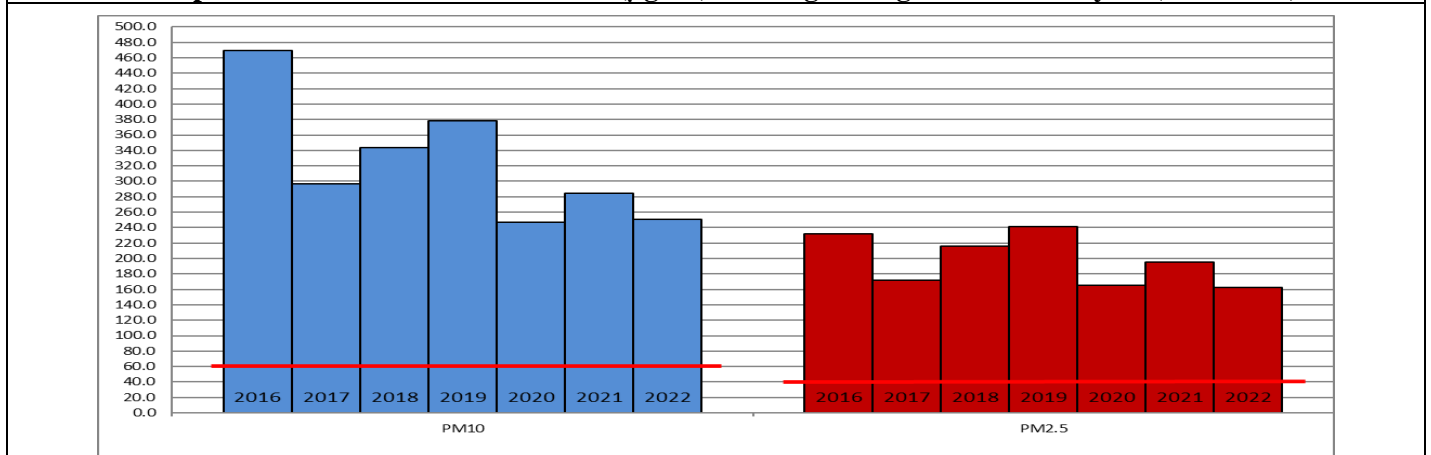
	Air Quality	AQI Value	Prominent Pollutant
Delhi	Very Poor	316↓	PM _{2.5}
Faridabad	Very Poor	330↓	PM _{2.5}
Ghaziabad	Poor	287↓	PM _{2.5}
Greater Noida	Poor	260↓	PM _{2.5}
Gurugram	Very Poor	304↑	PM _{2.5}
Noida	Poor	277↓	PM ₁₀ , PM _{2.5}

*Data available for 36 stations in Delhi today. # ↓, ↑ arrows indicate increase/decrease as compared to value on the previous day

Comparative status of AQI - Delhi from 01 January to 22 January 2016-2022

Category	Year	2016	2017	2018	2019	2020	2021	2022	2016	2017	2018	2019	2020	2021	2022
	No. of days	22	22	22	22	22	22	22							
Good (0–50)		0	0	0	0	0	0	0							
Satisfactory (51–100)		0	0	0	0	0	0	2	0	0	0	1	0	2	5
Moderate (101–200)		0	0	0	1	0	2	3							
Poor (201–300)		2	7	4	4	12	8	4							
Very Poor (301–400)		17	15	15	10	8	6	12	22	22	22	21	22	20	17
Severe (>401)		3	0	3	7	2	6	1							

Comparative status of PM_{2.5} and PM₁₀ (µg/m³) running average – Till January 20 (2016-2022)



Hotspots for Today:

*Details given overleaf

Delhi	Jahangirpuri, Mundka, Rohini, Narela, DTU	Gurugram	Sector-51, Teri Gram
Faridabad	New Industrial Town, Sector-11	Greater Noida	Knowledge Park – V
Ghaziabad	Vasundhara, Sanjay Nagar	Noida	Sector -116, Sector - 1

Forecast by IITM:

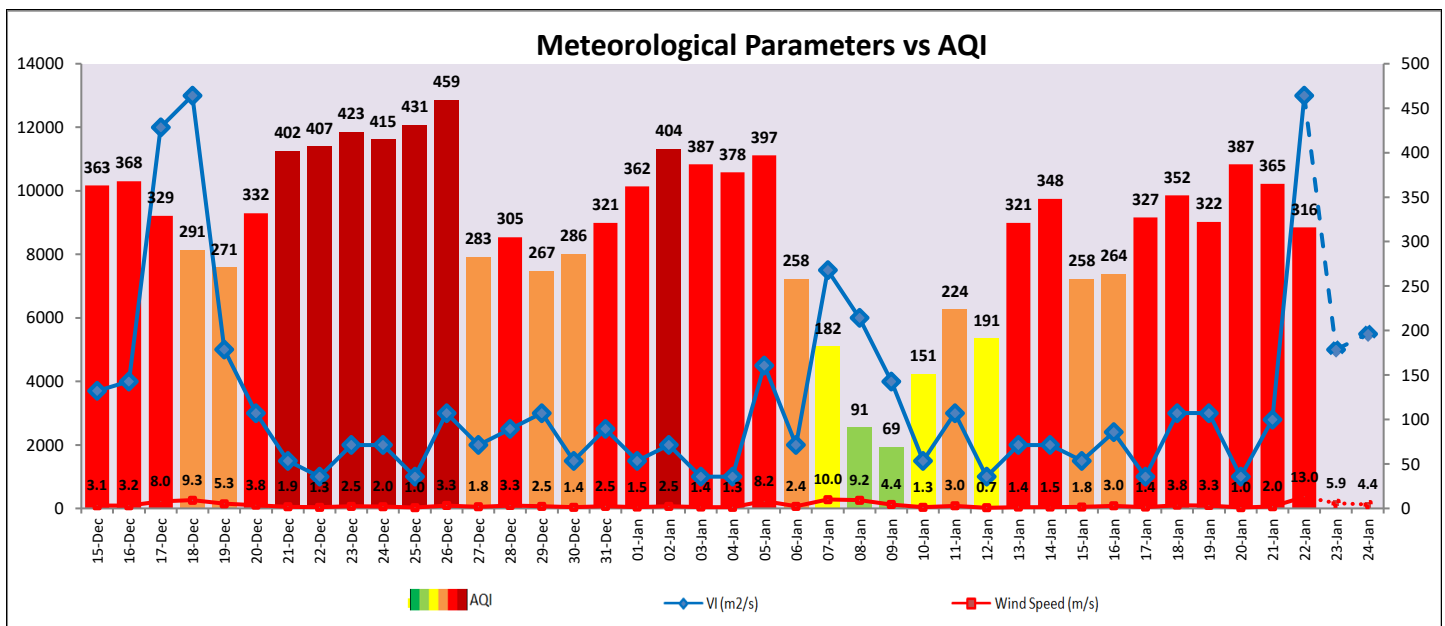
Parameters	January 23, 2022		January 24, 2022-January 25, 2022	
	Concentration	AQI Category	Concentration	AQI Category
PM ₁₀	191	Moderate	233	Moderate
PM _{2.5}	124	Very Poor	151	Very Poor

▪ **Wind Forecast for Delhi:**

	Wind speed (at surface) in km/h		Wind speed (at 900 m) in km/h	Wind Direction	
	As per IMD (at 17:30 hrs.)	As per windy.com (at 16:00 hrs.)	As per windy.com (at 16:00hrs)	As per IMD (at 17:30hrs.)	As per windy.com at 900m
January 23, 2022	08	07	15	E	W
January 24, 2022	08	08	20	NW	W
January 25, 2022	10	06	18	NW	NW

▪ **IMD Alert for Tomorrow (23.01.2022):**

The air quality over Delhi-NCT is likely to improve significantly and reach in Poor to Moderate category owing to rain, strong winds and better ventilation conditions tomorrow and remain in Poor category on 24.01.2022. The predominant surface wind is likely to be coming from Southeast direction of Delhi with wind speed 08-15 kmph, **partly cloudy sky and very light rain/drizzle tomorrow**. Ventilation index is likely to be 5,000 m²/s.



▪ **Hotspots for Today**

City	Station Name	AQI value	Air Quality	Prominent Pollutant
Delhi	Jahangirpuri, Delhi - DPCC	392	Very Poor	PM _{2.5}
	Rohini, Delhi - DPCC	385	Very Poor	PM _{2.5}
	Narela, Delhi - DPCC	374	Very Poor	PM _{2.5}
	Mundka, Delhi - DPCC	372	Very Poor	PM _{2.5}
	DTU, Delhi - CPCB	369	Very Poor	PM _{2.5}
Faridabad	New Industrial Town, Faridabad - HSPCB	353	Very Poor	PM _{2.5}
	Sector 11, Faridabad - HSPCB	338	Very Poor	PM _{2.5}
Gurugram	Sector-51, Gurugram - HSPCB	343	Very Poor	PM _{2.5}
	Teri Gram, Gurugram - HSPCB	316	Very Poor	PM _{2.5}
Ghaziabad	Sanjay Nagar, Ghaziabad - UPPCB	320	Very Poor	PM _{2.5}
	Vasundhara, Ghaziabad - UPPCB	295	Poor	PM _{2.5}
Greater Noida	Knowledge Park - V, Greater Noida - UPPCB	273	Poor	PM _{2.5}
Noida	Sector-1, Noida - UPPCB	317	Very Poor	PM _{2.5}
	Sector-116, Noida - UPPCB	285	Poor	PM _{2.5}