



Central Pollution Control Board

Air Quality Status for Delhi & NCR

Dated – December 21, 2022



Current Air Quality Status:

Air Quality Index (AQI) (Average of past 24 hours)

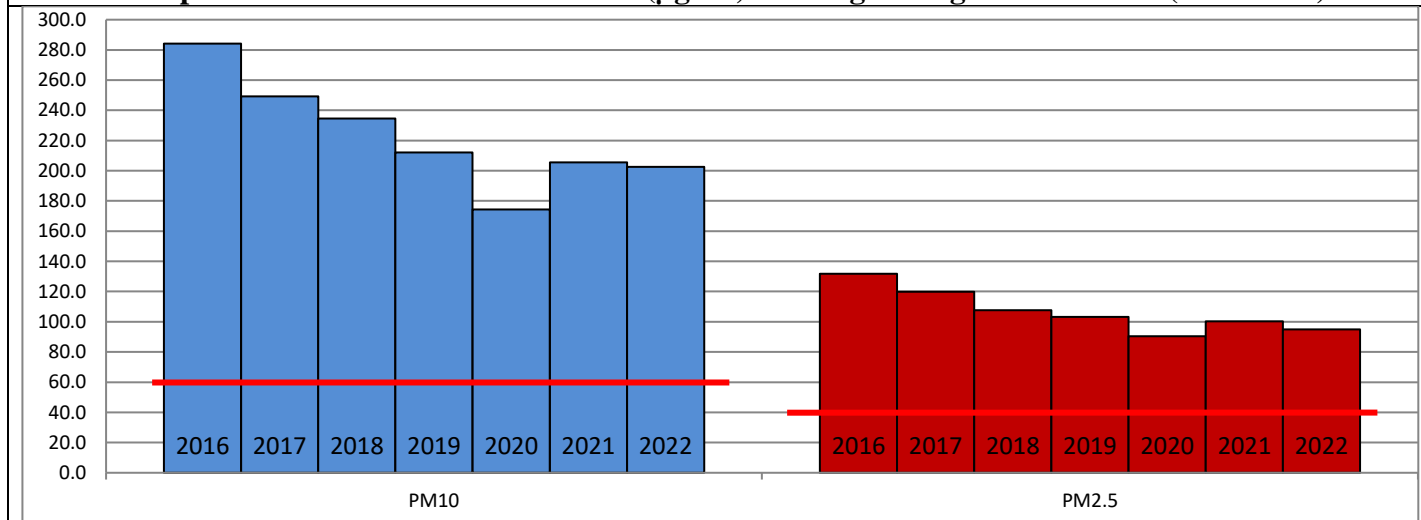
	Air Quality	AQI Value	Prominent Pollutant
Delhi	Very Poor	328 ↓	PM _{2.5}
Faridabad	Very Poor	333 ↓	PM ₁₀ , PM _{2.5}
Ghaziabad	Poor	262 ↓	PM _{2.5}
Greater Noida	Very Poor	324 ↓	PM _{2.5}
Gurugram	Very Poor	340 ↓	PM _{2.5}
Noida	Very Poor	312 ↓	PM _{2.5}

*Data available for 38 stations in Delhi today. # ↓ ↑ arrows indicate a decrease/increase as compared to the value on the previous day.

Comparative status of AQI - Delhi from 01 January to 21 December 2016-2022

Category	Year	2016	2017	2018	2019	2020	2021	2022	2016	2017	2018	2019	2020	2021	2022
	No. of days	344	355	355	355	356	355	355							
Good (0–50)		0	2	0	2	5	1	3							
Satisfactory (51–100)		24	45	53	59	95	81	65	110	152	159	182	227	197	163
Moderate (101–200)		86	105	106	121	127	115	95							
Poor (201–300)		120	114	114	103	72	77	130							
Very Poor (301–400)		92	80	68	49	45	62	56	234	203	196	173	129	158	192
Severe (>401)		22	8	14	20	12	18	6							

Comparative status of PM₁₀ and PM_{2.5} (µg/m³) running average – Till Dec 20 (2016-2022)



Hotspots for Today:

*Details given overleaf

Delhi	Nehru Nagar, Patparganj, R K Puram, Dwarka Sector-8, Dr. Karni Singh Shooting Range	Ghaziabad	Vasundhara
Faridabad	New Industrial Town, Sector-16A	Greater Noida	Knowledge Park -III
Gurugram	Teri Gram	Noida	Sector-116

Forecast by IITM (Delhi):

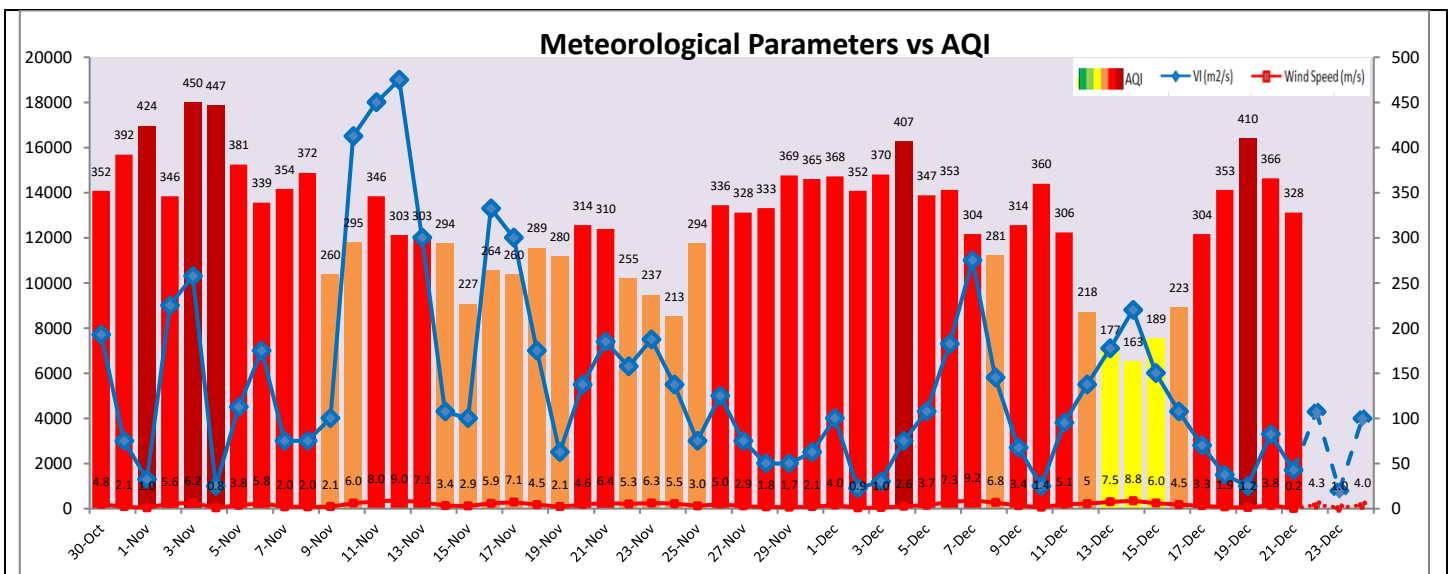
	Dec 22, 2022		Dec 23, 2022- Dec 24, 2022	
	Concentration	AQI Category	Concentration	AQI Category
PM ₁₀	279	Poor	307	Poor
PM _{2.5}	145	Very Poor	160	Very Poor

Wind Forecast for Delhi:

	Wind speed (at surface) in km/h		Wind speed (at 900 m) in km/h	Wind Direction	
	As per IMD (range)	As per windy.com (at 16:00 hrs.)	As per windy.com (at 16:00hrs)	As per IMD	As per windy.com at 900m
Dec 22, 2022	08	10	18	NW	NW
Dec 23, 2022	04-08	07	09	N	E
Dec 24, 2022	04-12	09	27	NW	NW

IMD Alert for Tomorrow (22.12.2022):

The air quality is likely to improve further and remain in Very Poor to Poor category on 22.12.2022. The predominant surface wind is likely to be coming from Northwest direction in Delhi with wind speed 08 kmph, mainly clear sky and moderate to dense fog in the morning tomorrow. Ventilation index is likely to be 4,300 m²/s.



Hotspots for Today

City	Station Name	AQI value	Air Quality	Prominent Pollutant
Delhi	Nehru Nagar, Delhi - DPCC	394	Very Poor	PM _{2.5}
	Dwarka-Sector 8, Delhi - DPCC	376	Very Poor	PM _{2.5}
	Dr. Karni Singh Shooting Range, Delhi - DPCC	372	Very Poor	PM _{2.5}
	R K Puram, Delhi - DPCC	368	Very Poor	PM _{2.5}
	Patparganj, Delhi - DPCC	364	Very Poor	PM _{2.5}
Faridabad	New Industrial Town, Faridabad - HSPCB	382	Very Poor	PM ₁₀
	Sector- 16A, Faridabad - HSPCB	377	Very Poor	PM _{2.5}
Gurugram	Teri Gram, Gurugram - HSPCB	352	Very Poor	PM _{2.5}
Ghaziabad	Vasundhara, Ghaziabad - UPPCB	330	Very Poor	PM _{2.5}
Greater Noida	Knowledge Park - III, Greater Noida - UPPCB	325	Very Poor	PM _{2.5}
Noida	Sector-116, Noida - UPPCB	334	Very Poor	PM _{2.5}