



Central Pollution Control Board

Air Quality Status for Delhi & NCR

Dated – December 21, 2021



Current Air Quality Status:

Air Quality Index (AQI) (Average of past 24 hours)

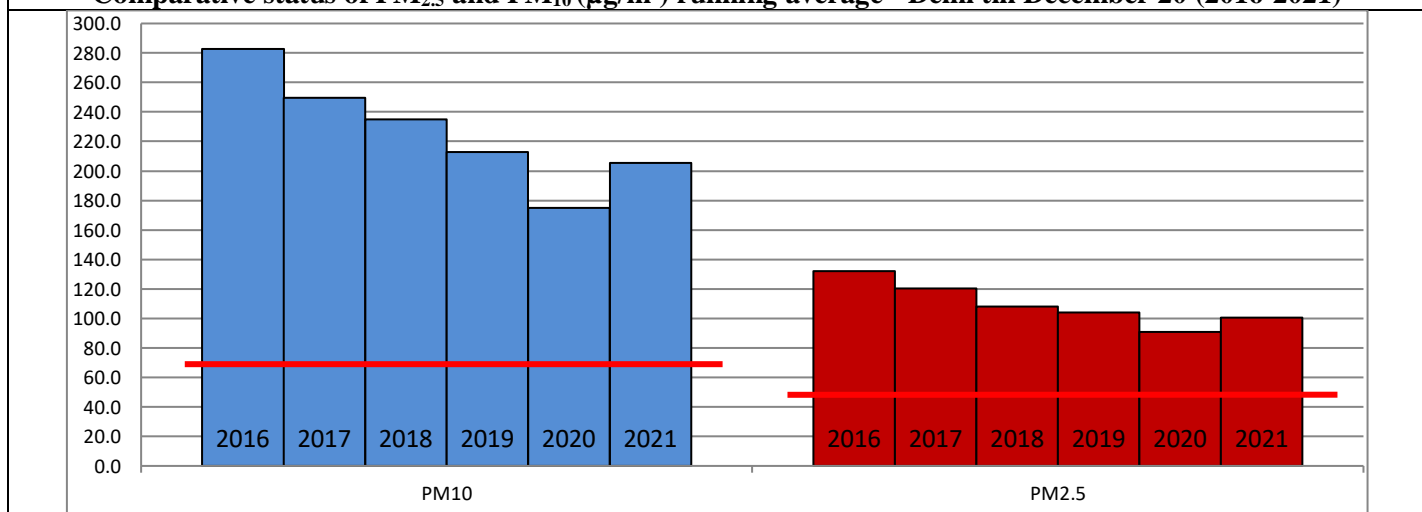
	Air Quality	AQI Value	Prominent Pollutant
Delhi	Severe	402↑	PM _{2.5}
Faridabad	Very Poor	395↑	PM _{2.5}
Ghaziabad	Very Poor	392↑	PM _{2.5}
Greater Noida	Very Poor	372↑	PM _{2.5}
Gurugram	Very Poor	314↑	PM _{2.5}
Noida	Very Poor	382↑	PM _{2.5} , PM ₁₀

*Data available for 35 stations in Delhi today. # ↑ ↓ arrows indicate increase/decrease as compared to value on the previous day

Comparative status of AQI - Delhi from 01 January to 21 December 2016-2021

Category	Year	2016	2017	2018	2019	2020	2021	2016	2017	2018	2019	2020	2021
	No. of days	344	355	355	356	357	356						
Good (0–50)		0	2	0	2	5	1						
Satisfactory (51–100)		25	45	53	59	95	72	108	152	159	182	227	197
Moderate (101–200)		83	105	106	121	127	124						
Poor (201–300)		120	114	114	104	73	78						
Very Poor (301–400)		94	80	68	49	45	62	236	203	196	174	130	159
Severe (>401)		22	9	14	21	12	19						

Comparative status of PM_{2.5} and PM₁₀ (µg/m³) running average - Delhi till December 20 (2016-2021)



Hotspots for Today:

*Details given overleaf

Delhi	Jahangirpuri, Anand Vihar, Rohini, Wazirpur, Ashok Nagar	Gurugram	Vikas Sadan, Sector-51
Faridabad	Sector-16A, Sector - 11	Greater Noida	Knowledge Park - V
Ghaziabad	Vasundhara, Loni	Noida	Sector – 116, Sector –62

Forecast by IITM:

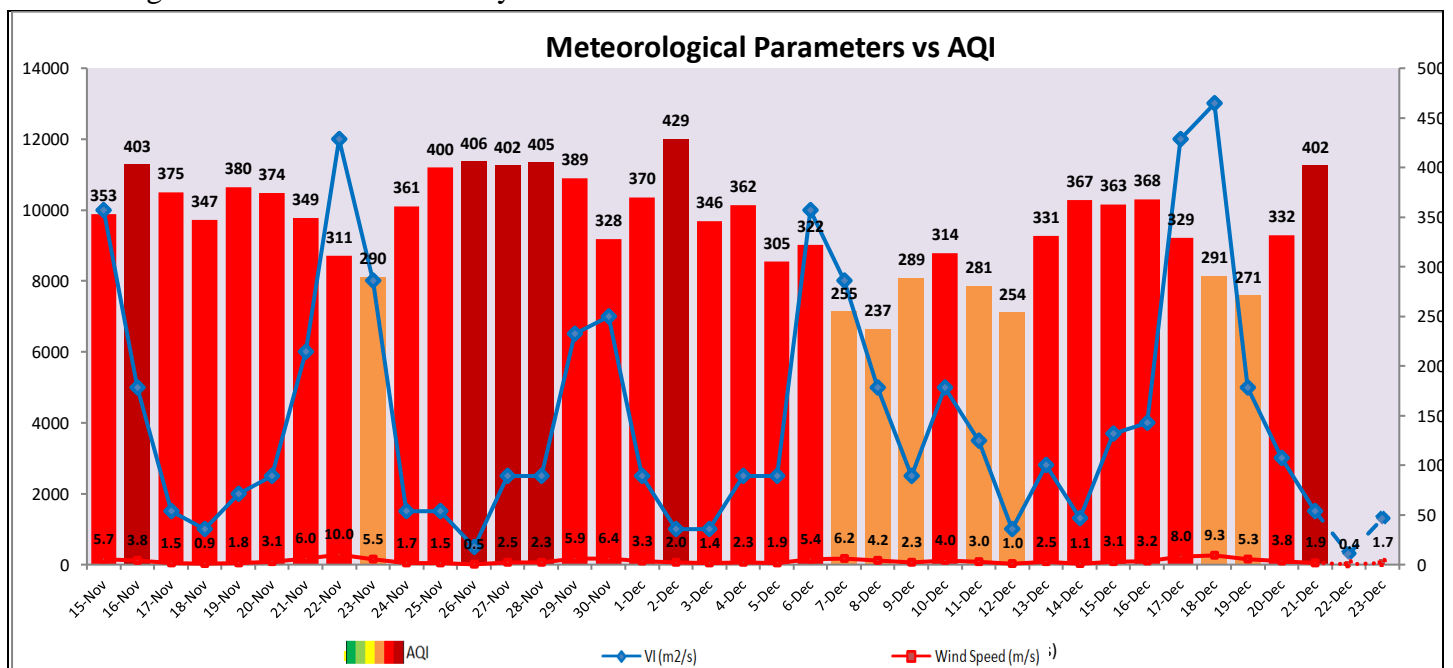
Parameters	December 22, 2021		December 23, 2021– December 24, 2021	
	Concentration	AQI Category	Concentration	AQI Category
PM ₁₀	400	Very Poor	418	Very Poor
PM _{2.5}	254	Severe	265	Severe

▪ **Wind Forecast for Delhi:**

Dates	Wind speed (at surface) in km/h		Wind speed (at 900 m) in km/h	Wind Direction	
	As per IMD (at 17:30 hrs.)	As per windy.com (at 16:00 hrs.)	As per windy.com (at 16:00hrs)	As per IMD (at 17:30hrs.)	As per windy.com at 900m
December 22, 2021	04	09	10	SE	NW
December 23, 2021	04	06	02	E	SW
December 24, 2021	04	06	02	SE	NW

▪ **IMD Alert for Tomorrow (22.12.2021):**

The air quality is likely to remain in Very Poor category on 22.12.2021 and 23.12.2021 also owing to slow/calm winds and poor ventilation conditions. The predominant surface wind is likely to be coming from East/Southeast direction of Delhi having wind speed 04-06 kmph with partly cloudy sky and shallow fog in the morning. Ventilation index is likely to be 300 m²/s.



▪ **Hotspots for Today**

City	Station Name	AQI value	Air Quality	Prominent Pollutant
Delhi	Jahangirpuri, Delhi - DPCC	460	Severe	PM _{2.5}
	Anand Vihar, Delhi - DPCC	453	Severe	PM _{2.5}
	Rohini, Delhi - DPCC	451	Severe	PM _{2.5}
	Wazirpur, Delhi - DPCC	448	Severe	PM _{2.5}
	Ashok Vihar, Delhi - DPCC	448	Severe	PM _{2.5}
Faridabad	Sector 11, Faridabad - HSPCB	408	Severe	PM _{2.5}
	Sector- 16A, Faridabad - HSPCB	385	Very Poor	PM _{2.5}
Gurugram	Vikas Sadan, Gurugram - HSPCB	374	Very Poor	PM _{2.5}
	Sector-51, Gurugram - HSPCB	353	Very Poor	PM _{2.5}
Ghaziabad	Loni, Ghaziabad - UPPCB	416	Severe	PM _{2.5}
	Vasundhara, Ghaziabad - UPPCB	402	Severe	PM _{2.5}
Greater Noida	Knowledge Park - V, Greater Noida - UPPCB	343	Very Poor	PM _{2.5}
Noida	Sector-116, Noida - UPPCB	398	Very Poor	PM _{2.5}
	Sector - 62, Noida - IMD	395	Very Poor	PM ₁₀