



Central Pollution Control Board

Air Quality Status for Delhi & NCR

Dated – November 21, 2022



Current Air Quality Status:

Air Quality Index (AQI) (Average of past 24 hours)

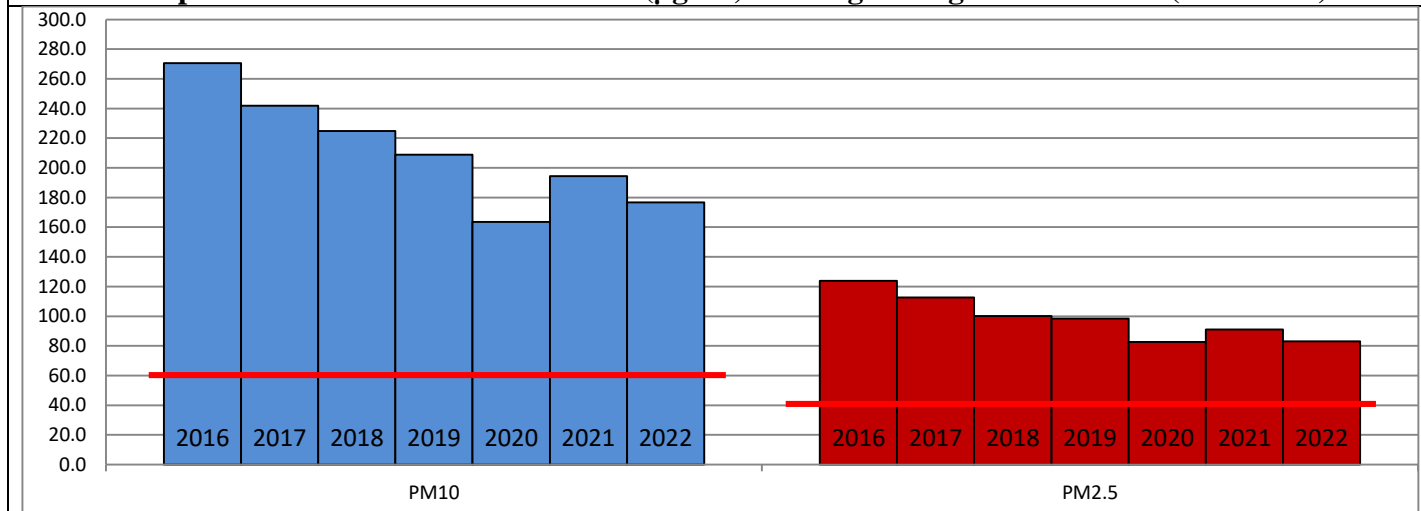
	Air Quality	AQI Value	Prominent Pollutant
Delhi	Very Poor	310 ↓	PM _{2.5}
Faridabad	Poor	264 ↑	PM _{2.5}
Ghaziabad	Poor	244 ↑	PM _{2.5}
Greater Noida	Poor	275 ↓	PM _{2.5}
Gurugram	Poor	276 ↓	PM _{2.5}
Noida	Poor	256 ↑	PM _{2.5}

*Data available for 36 stations in Delhi today. # ↓ ↑ arrows indicate a decrease/increase as compared to the value on the previous day.

Comparative status of AQI - Delhi from 01 January to 21 November 2016-2022

Category	Year	2016	2017	2018	2019	2020	2021	2022	2016	2017	2018	2019	2020	2021	2022
	No. of days	314	325	325	325	326	325	325							
Good (0–50)		0	2	0	2	5	1	3							
Satisfactory (51–100)		24	45	53	58	95	81	65	110	150	158	175	225	197	160
Moderate (101–200)		86	103	105	115	125	115	92							
Poor (201–300)		116	104	107	93	61	69	123							
Very Poor (301–400)		70	63	48	41	30	45	38	204	175	167	150	101	128	165
Severe (>401)		18	8	12	16	10	14	4							

Comparative status of PM₁₀ and PM_{2.5} (µg/m³) running average – Till Nov 17 (2016-2022)



Hotspots for Today:

*Details given overleaf

Delhi	Nehru Nagar, Burari Crossing, Anand Vihar, ITO, Jahangirpuri	Ghaziabad	Vasundhara, Loni
Faridabad	Sector- 11, Sector-16A	Greater Noida	-
Gurugram	Vikas Sadan, Teri Gram	Noida	Sector – 62, Sector-116

Forecast by IITM (Delhi):

	Nov 22, 2022		Nov 23, 2022- Nov 24, 2022	
	Concentration	AQI Category	Concentration	AQI Category
PM ₁₀	239	Moderate	260	Poor
PM _{2.5}	148	Very Poor	162	Very Poor

Wind Forecast for Delhi:

	Wind speed (at surface) in km/h		Wind speed (at 900 m) in km/h	Wind Direction	
	As per IMD (range)	As per windy.com (at 16:00 hrs.)	As per windy.com (at 16:00hrs)	As per IMD	As per windy.com at 900m
Nov 22, 2022	10-14	09	28	NW	NW
Nov 23, 2022	10-16	10	34	NW	NW
Nov 24, 2022	08-14	11	29	NW	NW

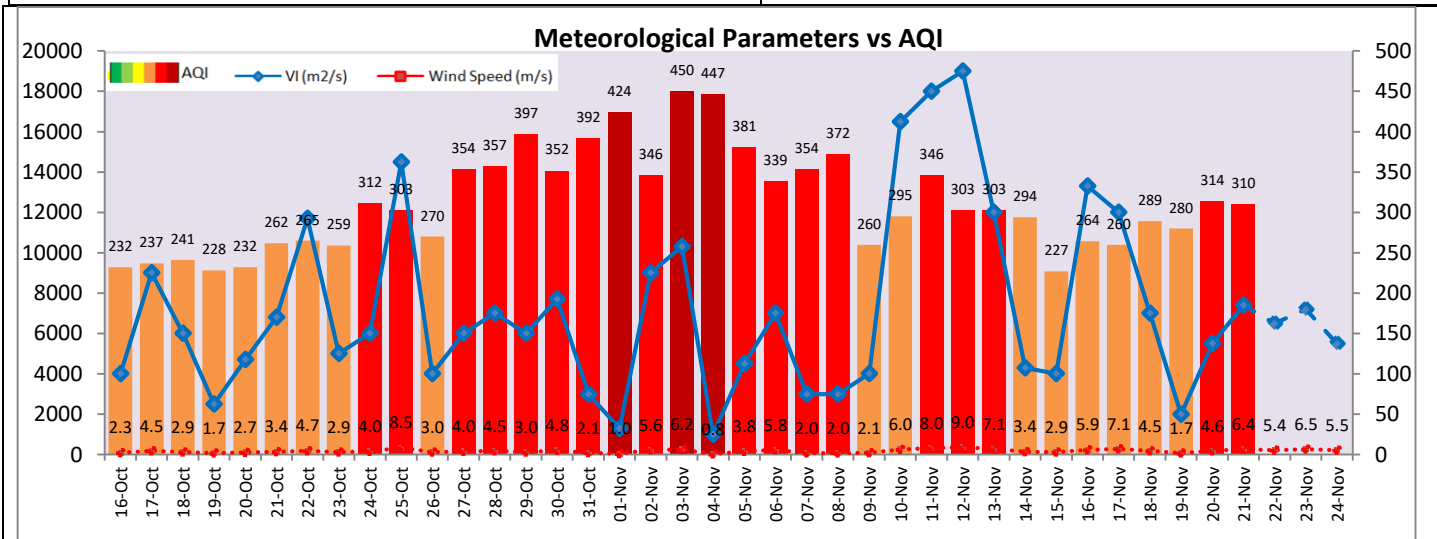
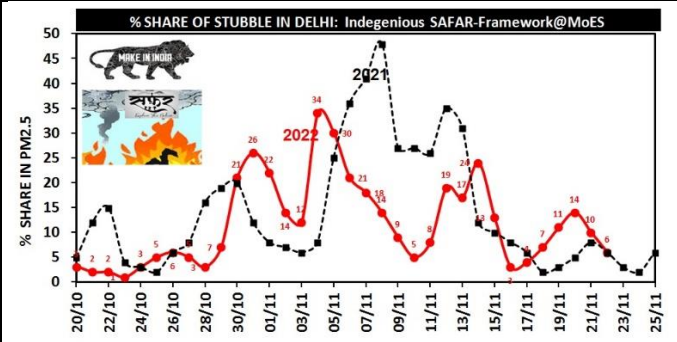
IMD Alert for Tomorrow (22.11.2022):

The air quality is likely to remain in Poor category from 22.11.2022 to 24.11.2022. The predominant surface wind is likely to be coming from Northwest direction in Delhi with wind speed 10-14 kmph, mainly clear sky and mist in the morning tomorrow. Ventilation index is likely to be 6,500 m²/s.

Active Fire Events (AFE):

Date	Punjab		Haryana	
	Nos. on the day	Total since September 15	Nos. on the day	Total since September 15
17.11.2022	966	47788	39	3272
17.11.2021	523	69445	101	6094

* As per IITM, the contribution of stubble burning to PM_{2.5} in Delhi is ~06%.



Hotspots for Today

City	Station Name	AQI value	Air Quality	Prominent Pollutant
Delhi	Nehru Nagar, Delhi - DPCC	358	Very Poor	PM _{2.5}
	Burari Crossing, Delhi - IMD	356	Very Poor	PM _{2.5}
	Anand Vihar, Delhi - DPCC	351	Very Poor	PM _{2.5}
	ITO, Delhi - CPCB	344	Very Poor	PM _{2.5}
	Jahangirpuri, Delhi - DPCC	339	Very Poor	PM _{2.5}
Faridabad	Sector 11, Faridabad - HSPCB	297	Poor	PM _{2.5}
	Sector- 16A, Faridabad - HSPCB	297	Poor	PM _{2.5}
Gurugram	Teri Gram, Gurugram - HSPCB	296	Poor	PM _{2.5}
	Vikas Sadan, Gurugram - HSPCB	289	Poor	PM _{2.5}
Ghaziabad	Vasundhara, Ghaziabad - UPPCB	287	Poor	PM _{2.5}
	Loni, Ghaziabad - UPPCB	260	Poor	PM _{2.5}
Noida	Sector - 62, Noida - IMD	322	Very Poor	PM _{2.5}
	Sector-116, Noida - UPPCB	271	Poor	PM _{2.5}