



Central Pollution Control Board

Air Quality Status for Delhi & NCR

Dated – November 21, 2021



Current Air Quality Status:

Air Quality Index (AQI) (Average of past 24 hours)

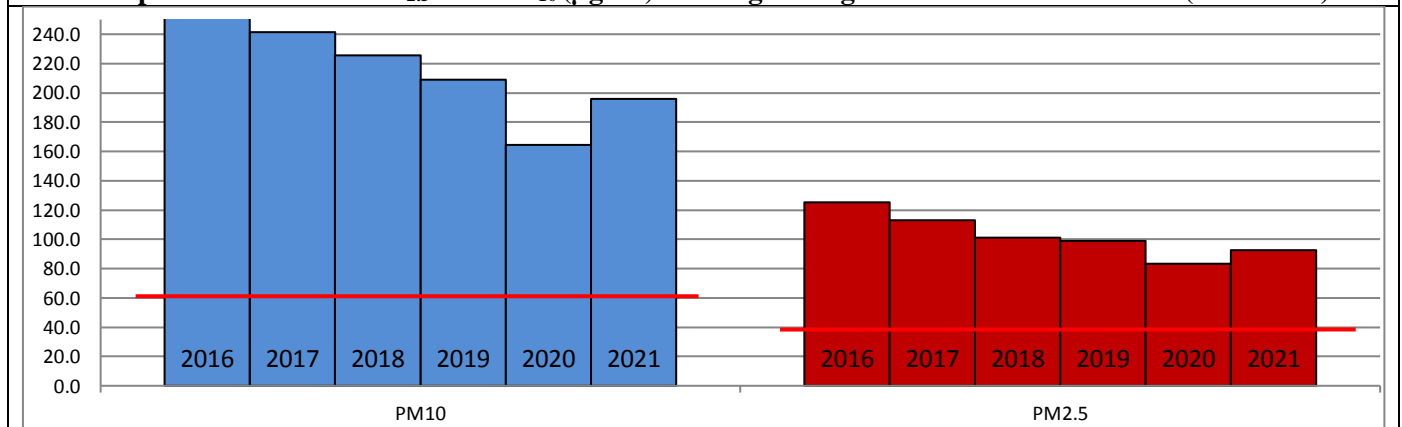
	Air Quality	AQI Value	Prominent Pollutant
Delhi	Very Poor	349 ↓	PM ₁₀ , PM _{2.5}
Faridabad	Very Poor	377 ↓	PM ₁₀ , PM _{2.5}
Ghaziabad	Very Poor	319 ↓	PM _{2.5}
Greater Noida	Poor	298 ↓	PM _{2.5}
Gurugram	Very Poor	364 ↓	PM _{2.5}
Noida	Very Poor	322 ↓	PM ₁₀ , PM _{2.5}

*Data available for 36 stations in Delhi today. # ↓, ↑ arrows indicate increase/decrease as compared to value on the previous day

Comparative status of AQI - Delhi from 01 January to 21 November 2016-2021

Category	Year No. of days	2016	2017	2018	2019	2020	2021	2016	2017	2018	2019	2020	2021
		314	325	325	325	326	325	2016	2017	2018	2019	2020	2021
Good (0-50)	0	2	0	2	5	1							
Satisfactory (51-100)	25	45	53	58	95	72	108	150	158	175	225	197	
Moderate (101-200)	83	103	105	115	125	124							
Poor (201-300)	116	104	107	93	61	69							
Very Poor (301-400)	72	63	48	41	30	45	206	175	167	150	101	128	
Severe (>401)	18	8	12	16	10	14							

Comparative status of PM_{2.5} and PM₁₀ (µg/m³) running average - Delhi till November 20 (2016-2021)



* The PM values are 24 hourly averages (6 am to 6 am)

Hotspots for Today:

*Details given overleaf

Delhi	Jahangirpuri, Vivek Vihar, Anand Vihar, R K Puram, Dwarka Sector-8	Gurugram	Sector-51, Vikas Sadan
Faridabad	Sector 11, Sector- 30	Greater Noida	Knowledge Park –III
Ghaziabad	Vasundhara, Loni	Noida	Sector – 62, Sector-116

Forecast by IITM:

Parameters	November 22, 2021		November 23, 2021– November 24, 2021	
	Concentration	AQI Category	Concentration	AQI Category
PM ₁₀	249	Moderate	224	Moderate
PM _{2.5}	139	Very Poor	125	Very Poor

Wind Forecast for Delhi:

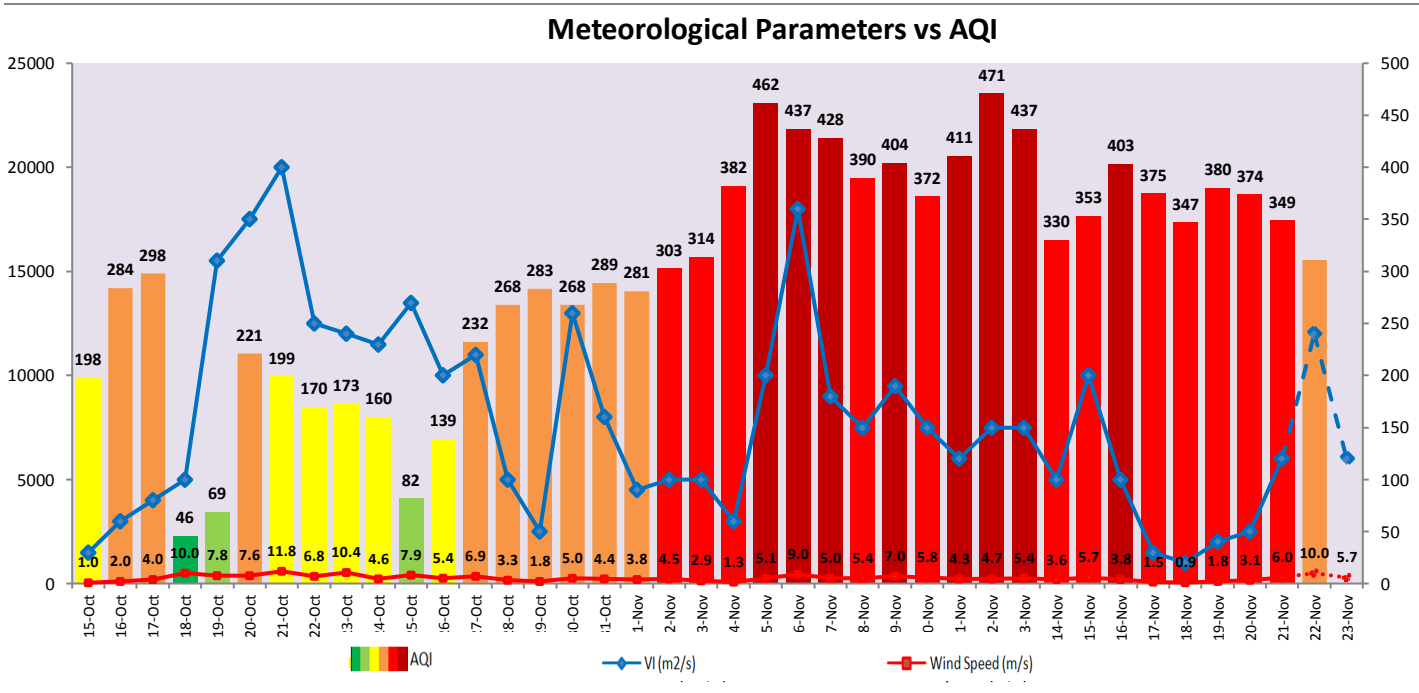
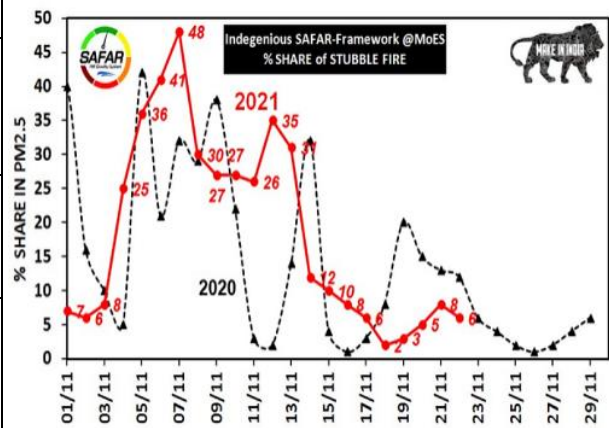
Dates	Wind speed (at surface) in km/h		Wind speed (at 900 m) in km/h	Wind Direction	
	As per IMD (at 17:30 hrs.)	As per windy.com (at 16:00 hrs.)	As per windy.com (at 16:00hrs)	As per IMD (at 17:30hrs.)	As per windy.com at 900m
November 22, 2021	12	13	46	NW	NW
November 23, 2021	20	10	31	NW	NW
November 24, 2021	16	09	04	NW	W

IMD Alert for Tomorrow (22.11.2021):

The air quality is likely to improve and remain in Poor to Moderate category on 22.11.2021 and 23.11.2021 due to relatively stronger winds are favourable for better dispersion of pollutants. The predominant surface wind is likely to coming from Northwest direction of Delhi with wind speed 12-20 kmph, strong surface winds (speed 20- 30 kmph) during the day, mainly clear sky and mist in the morning. Ventilation index is likely to be 10,000 m²/s.

Active Fire Events (AFE) s

Date	Punjab		Haryana	
	Nos. on the day	Total since September 21	Nos. on the day	Total since September 21
20.11.2021	283	70856	127	6464
20.11.2020	677	82147	77	3884



▪ **Hotspots for Today**

City	Station Name	AQI value	Air Quality	Prominent Pollutant
Delhi	Anand Vihar, Delhi - DPCC	429	Severe	PM ₁₀
	Jahangirpuri, Delhi - DPCC	425	Severe	PM _{2.5}
	Vivek Vihar, Delhi - DPCC	408	Severe	PM _{2.5}
	R K Puram, Delhi - DPCC	407	Severe	PM _{2.5}
	Dwarka-Sector 8, Delhi - DPCC	404	Severe	PM _{2.5}
Faridabad	Sector 11, Faridabad - HSPCB	415	Severe	PM ₁₀
	Sector 30, Faridabad - HSPCB	389	Very Poor	PM _{2.5}
Gurugram	Vikas Sadan, Gurugram - HSPCB	379	Very Poor	PM _{2.5}
	Sector-51, Gurugram - HSPCB	377	Very Poor	PM _{2.5}
Ghaziabad	Loni, Ghaziabad - UPPCB	390	Very Poor	PM _{2.5}
	Vasundhara, Ghaziabad - UPPCB	359	Very Poor	PM _{2.5}
Greater Noida	Knowledge Park - III, Greater Noida - UPPCB	343	Very Poor	PM _{2.5}
Noida	Sector - 62, Noida - IMD	409	Severe	PM ₁₀
	Sector-116, Noida - UPPCB	339	Very Poor	PM _{2.5}