



Central Pollution Control Board

Air Quality Status for Delhi & NCR

Dated – March 21, 2022



Current Air Quality Status:

Air Quality Index (AQI) (Average of past 24 hours)

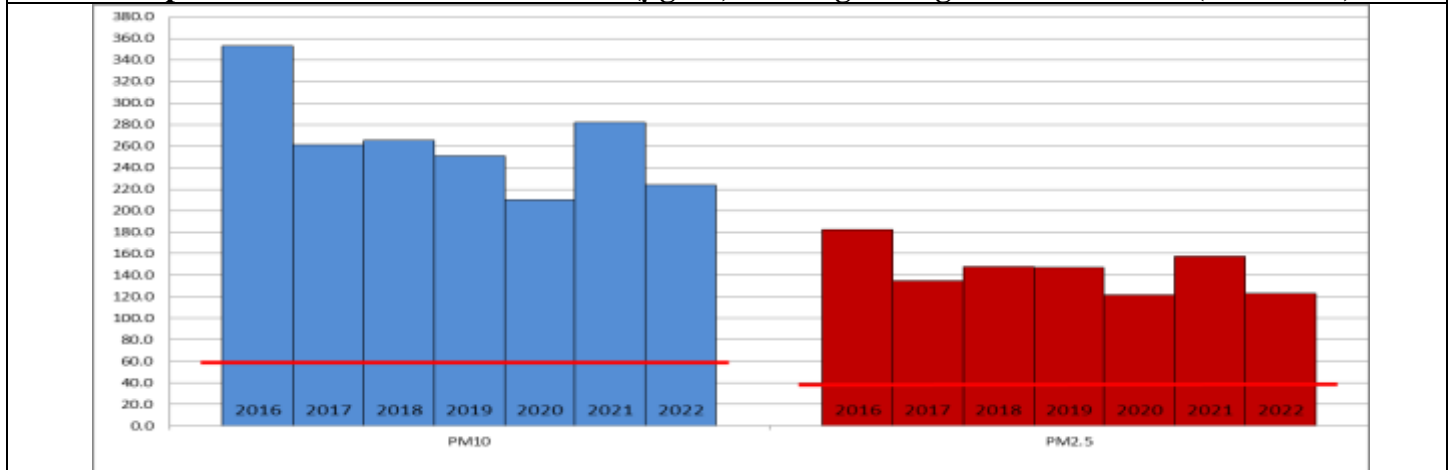
	Air Quality	AQI Value	Prominent Pollutant
Delhi	Poor	271↑	PM ₁₀
Faridabad	Poor	254↑	PM _{2.5}
Ghaziabad	Very Poor	342↑	PM ₁₀ , PM _{2.5}
Greater Noida	Poor	270↑	PM ₁₀
Gurugram	Poor	223↓	PM _{2.5}
Noida	Poor	274↑	PM ₁₀

*Data available for 35 stations in Delhi today. # ↑ ↓ arrows indicate increase/decrease as compared to value on the previous day

Comparative status of AQI - Delhi from 01 January to 21 March 2016-2022

Category	Year	2016	2017	2018	2019	2020	2021	2022	2016	2017	2018	2019	2020	2021	2022
		No. of days													
Good (0–50)		0	0	0	0	0	0	0							
Satisfactory (51–100)		0	0	0	1	5	0	3	6	13	19	25	29	8	25
Moderate (101–200)		6	13	19	24	24	8	22							
Poor (201–300)		24	43	37	27	35	35	37							
Very Poor (301–400)		41	24	21	21	15	31	17	71	67	61	55	52	72	55
Severe (>401)		6	0	3	7	2	6	1							

Comparative status of PM_{2.5} and PM₁₀ (µg/m³) running average – Till March 16 (2016-2022)



Hotspots for Today:

*Details given overleaf

Delhi	Bawana, Anand Vihar, Mundka, Narela, Chandni Chowk	Gurugram	Sector-51, Vikas Sadan
Faridabad	Sector 11, Sector- 16A	Greater Noida	Knowledge Park - V
Ghaziabad	Vasundhara, Loni	Noida	Sector – 1, Sector - 62

Forecast by IITM:

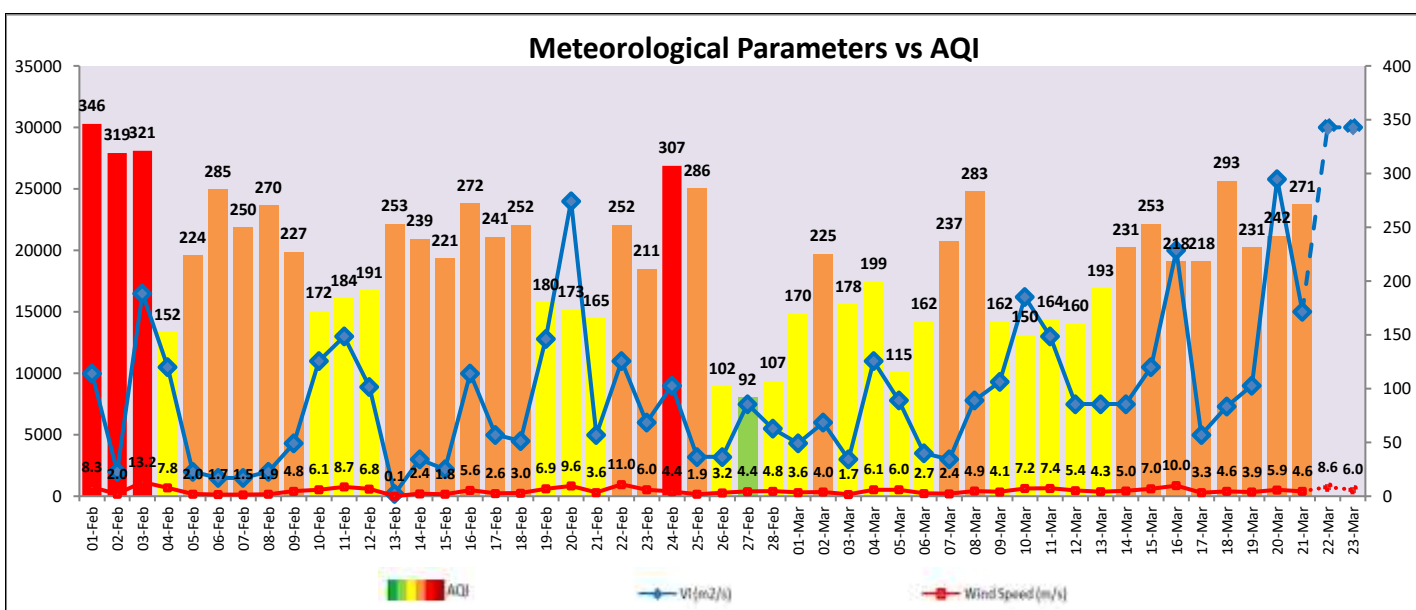
Parameters	March 22, 2022		March 23, 2022- March 24, 2022	
	Concentration	AQI Category	Concentration	AQI Category
PM ₁₀	286	Poor	312	Poor
PM _{2.5}	127	Very Poor	139	Very Poor

Wind Forecast for Delhi:

	Wind speed (at surface) in km/h		Wind speed (at 900 m) in km/h	Wind Direction	
	As per IMD (at 17:30 hrs.)	As per windy.com (at 16:00 hrs.)	As per windy.com (at 16:00hrs)	As per IMD (at 17:30hrs.)	As per windy.com at 900m
March 22, 2022	12	13	36	N	NW
March 23, 2022	04	05	21	SW	NW
March 24, 2022	08	10	23	NW	W

IMD Alert for Tomorrow (22.03.2022):

The air quality is likely to remain in Poor category on 22.03.2022 and 23.03.2022. The predominant surface wind is likely to be coming from Northwest/North direction of Delhi with wind speed 12-20 kmph, clear sky and strong surface winds (speed 20-30 kmph) during the day tomorrow. Ventilation index is likely to be 30,000 m²/s. **Dust raising activities are likely over parts of Rajasthan and Gujarat and transport of dust from these regions as well as local dust will impact air quality over Indo-Gangetic plain.**



Hotspots for Today

City	Station Name	AQI value	Air Quality	Prominent Pollutant
Delhi	Bawana, Delhi - DPCC	344	Very Poor	PM ₁₀
	Anand Vihar, Delhi - DPCC	341	Very Poor	PM ₁₀
	Mundka, Delhi - DPCC	340	Very Poor	PM _{2.5}
	Narela, Delhi - DPCC	329	Very Poor	PM ₁₀
	Chandni Chowk, Delhi - IITM	325	Very Poor	PM ₁₀
Faridabad	Sector 11, Faridabad - HSPCB	332	Very Poor	PM _{2.5}
	Sector- 16A, Faridabad - HSPCB	242	Poor	PM _{2.5}
Gurugram	Sector-51, Gurugram - HSPCB	239	Poor	PM _{2.5}
	Vikas Sadan, Gurugram - HSPCB	238	Poor	PM _{2.5}
Ghaziabad	Loni, Ghaziabad - UPPCB	351	Very Poor	PM _{2.5}
	Vasundhara, Ghaziabad - UPPCB	348	Very Poor	PM ₁₀
Greater Noida	Knowledge Park - V, Greater Noida - UPPCB	270	Poor	PM ₁₀
Noida	Sector - 62, Noida - IMD	284	Poor	PM ₁₀
	Sector-1, Noida - UPPCB	278	Poor	PM ₁₀