



Central Pollution Control Board

Air Quality Status for Delhi & NCR

Dated – January 21, 2024



Current Air Quality Status:

Air Quality Index (AQI) (Average of past 24 hours at 4 PM) in comparison with last two years

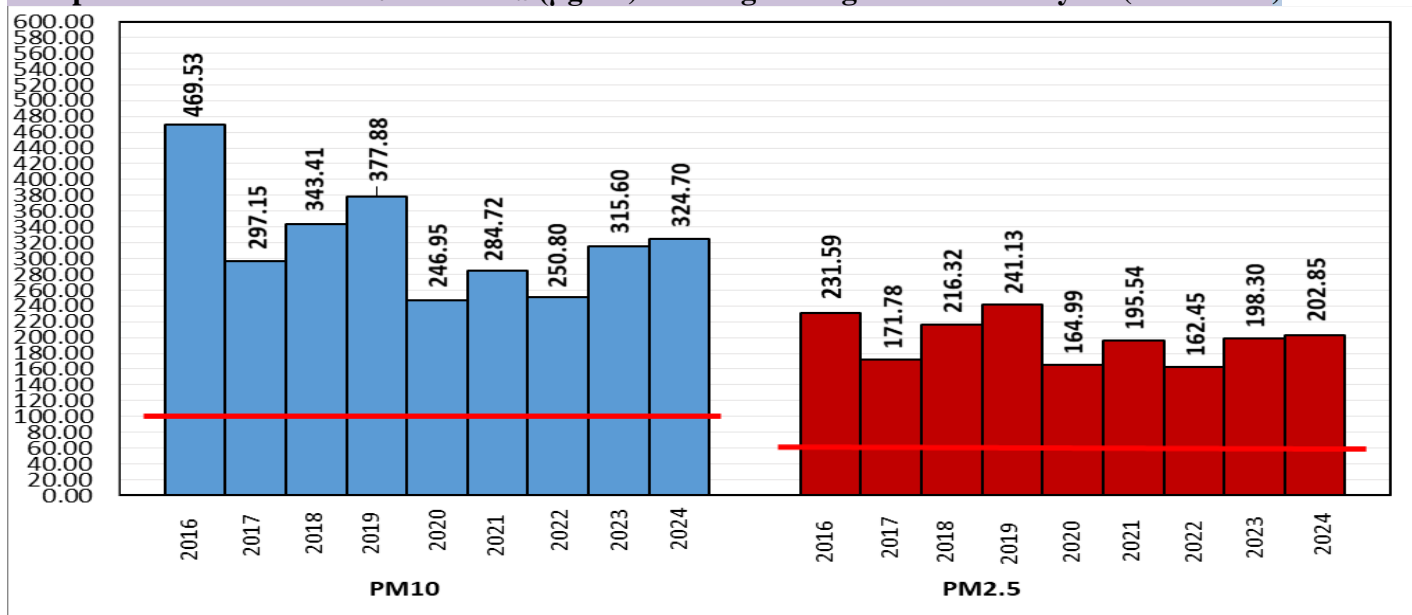
	2024			2023			2022		
	Air Quality	AQI Value	Prominent Pollutant	Air Quality	AQI Value	Prominent Pollutant	Air Quality	AQI Value	Prominent Pollutant
Delhi	Very Poor	349↑	PM2.5	Poor	294↑	PM2.5	Very Poor	365↓	PM2.5
Faridabad	Very Poor	301↑	PM2.5	Poor	279↓	PM2.5	Very Poor	360↓	PM10, PM2.5
Ghaziabad	Very Poor	309↑	PM2.5	Moderate	178↑	PM10	Very Poor	340↓	PM2.5
Greater Noida	Very Poor	328↑	PM2.5	Poor	268↑	PM10, PM2.5	Very Poor	302↓	PM2.5
Gurugram	Poor	248↓	PM10, PM2.5	Poor	224↑	PM2.5	Very Poor	302↓	PM2.5
Noida	Very Poor	344↑	PM2.5	Poor	228↑	PM2.5	Very Poor	338↓	PM10, PM2.5

*Data available for 36(2024), 36(2023), 35(2022) stations in Delhi today. # ↑, ↓ arrows indicate a decrease/increase as compared to the value on the previous day.

Comparative status of AQI - Delhi from 01 January to 21 January 2016-2024

Category	Year	2016	2017	2018	2019	2020	2021	2022	2023	2024	2016	2017	2018	2019	2020	2021	2022	2023	2024
	No. of days	21	21	21	21	21	21	21	21	21	2016	2017	2018	2019	2020	2021	2022	2023	2024
Good (0-50)		0	0	0	0	0	0	0	0	0	0	0	0	0	0	2	5	0	0
Satisfactory (51-100)		0	0	0	0	0	0	2	0	0	0	0	0	0	0	2	5	0	0
Moderate (101-200)		0	0	0	0	0	2	3	0	0	0	0	0	0	0	0	0	0	0
Poor (201-300)		2	7	4	4	12	7	4	6	1	21	21	21	21	21	19	16	21	21
Very Poor (301-400)		16	14	14	10	7	6	11	13	19	21	21	21	21	21	19	16	21	21
Severe (>401)		3	0	3	7	2	6	1	2	1	21	21	21	21	21	19	16	21	21

Comparative status of PM₁₀ and PM_{2.5} (µg/m³) running average – Till January 20 (2016-2024)



*Red line shows the annual average concentration standards for PM₁₀ and PM_{2.5}.

Daily Average of Particulates in Delhi (24 hourly average value; from 06:00am of 20.01.24 to 06:00 am of 21.01.24)

Date ↓ / parameter →	PM _{2.5} (µg/m ³)	PM ₁₀ (µg/m ³)
20-January -2024	205↑	341↑

Hotspots for Today:

*Details given below

Delhi	Nehru Nagar, Okhla Phase-2, Jahangirpuri, Anand Vihar, Wazirpur	Ghaziabad	Sanjay Nagar, Vasundhara
Faridabad	New Industrial Town, Sector- 16A, Sector 11	Greater Noida	Knowledge Park -V
Gurugram	Sector-51	Noida	Sector-125, Sector-116

Forecast by IITM(Delhi):

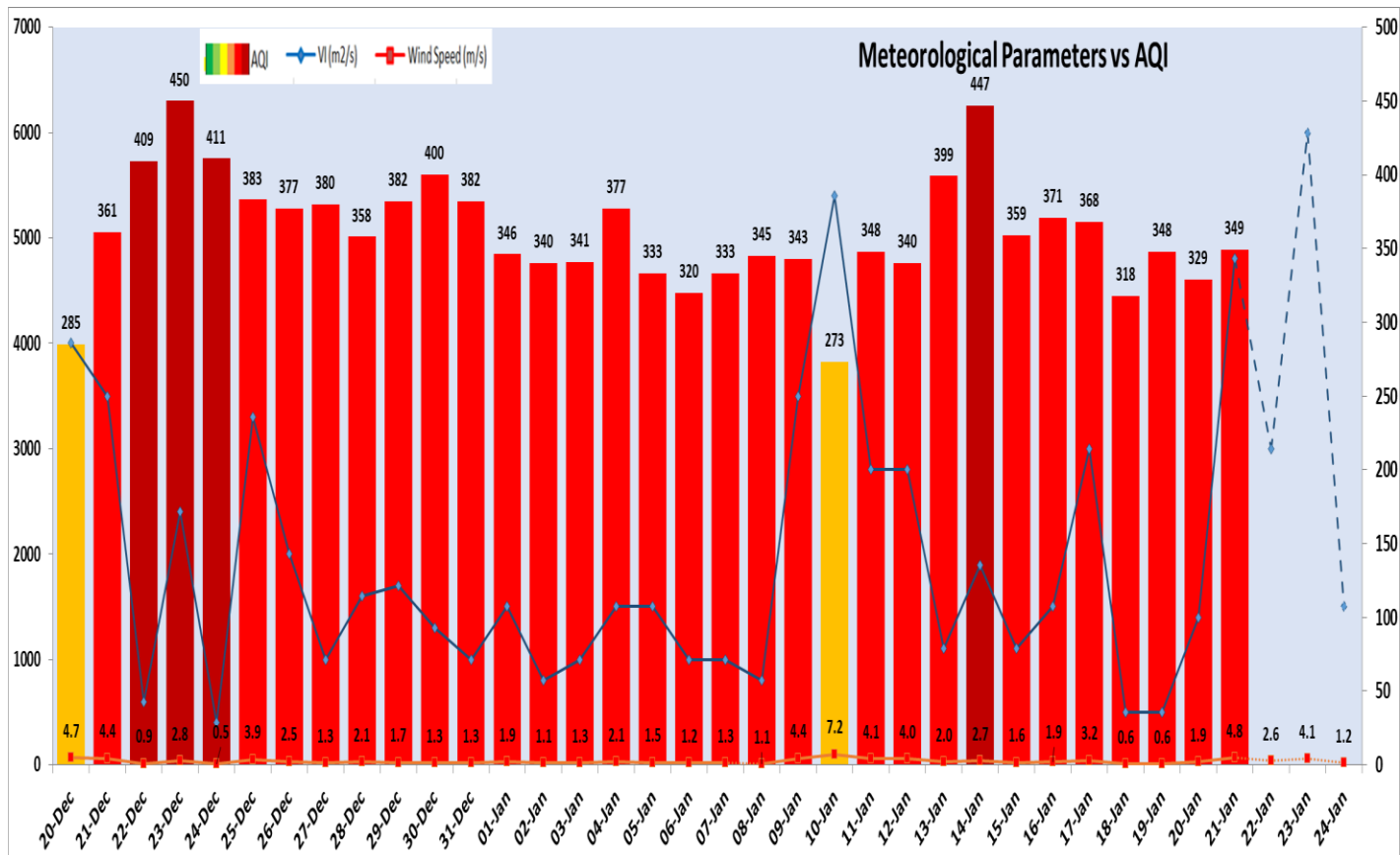
	Jan 22, 2024	Jan 23, 2024	Jan 24, 2024
AQI Category	Very Poor	Very Poor	Very Poor

Wind Forecast for Delhi:

	Wind speed (at surface) in km/h		Wind speed (at 900 m) in km/h	Wind Direction	
	As per IMD (range)	As per windy.com (at 16:00 hrs.)	As per windy.com (at 16:00hrs)	As per IMD	As per windy.com at 900m
Jan 22. 2024	UPTO 04	01	15	VAR	W
Jan 23. 2024	04 TO 10	04	12	NW	NW
Jan 24. 2024	UPTO 04	07	13	NW	W

IMD Alert for Tomorrow (22.01.2024):

The air quality is likely to improve but remain in Very Poor category on 22.01.2024. The predominant surface wind is likely to be coming from variable directions in Delhi with wind speed upto 04 kmph, mainly clear sky, dense to very dense fog in the morning and cold day conditions at isolated places on 22.01.2024. Ventilation index is likely to be 3000 m²/s.



Delhi Temperature in (°C)		
Date	Minimum	Maximum
18-01-2024	6.6	18.2
19-01-2024	7.1	18.6
20-01-2024	8.5	14.2
21-01-2024	4.8	17.7

▪ Hotspots for Today

City	Station Name	AQI value	Air Quality	Prominent Pollutant
Delhi	Nehru Nagar, Delhi - DPCC	400	Very Poor	PM _{2.5}
	Okhla Phase-2, Delhi - DPCC	399	Very Poor	PM _{2.5}
	Jahangirpuri, Delhi - DPCC	398	Very Poor	PM _{2.5}
	Anand Vihar, Delhi - DPCC	395	Very Poor	PM _{2.5}
	Wazirpur, Delhi - DPCC	395	Very Poor	PM _{2.5}
Faridabad	New Industrial Town, Faridabad - HSPCB	363	Very Poor	PM _{2.5}
	Sector- 16A, Faridabad - HSPCB	357	Very Poor	PM _{2.5}
	Sector 11, Faridabad - HSPCB	312	Very Poor	PM _{2.5}
Gurugram	Sector-51, Gurugram - HSPCB	403	Severe	PM _{2.5}
Ghaziabad	Sanjay Nagar, Ghaziabad - UPPCB	341	Very Poor	PM _{2.5}
	Vasundhara, Ghaziabad - UPPCB	326	Very Poor	PM _{2.5}
Greater Noida	Knowledge Park - V, Greater Noida - UPPCB	349	Very Poor	PM _{2.5}
Noida	Sector - 125, Noida - UPPCB	392	Very Poor	PM _{2.5}
	Sector-116, Noida - UPPCB	345	Very Poor	PM _{2.5}