



Central Pollution Control Board

Air Quality Status for Delhi & NCR

Dated – December 20, 2023



Current Air Quality Status:

Air Quality Index (AQI) (Average of past 24 hours at 4 PM) in comparison with last two years

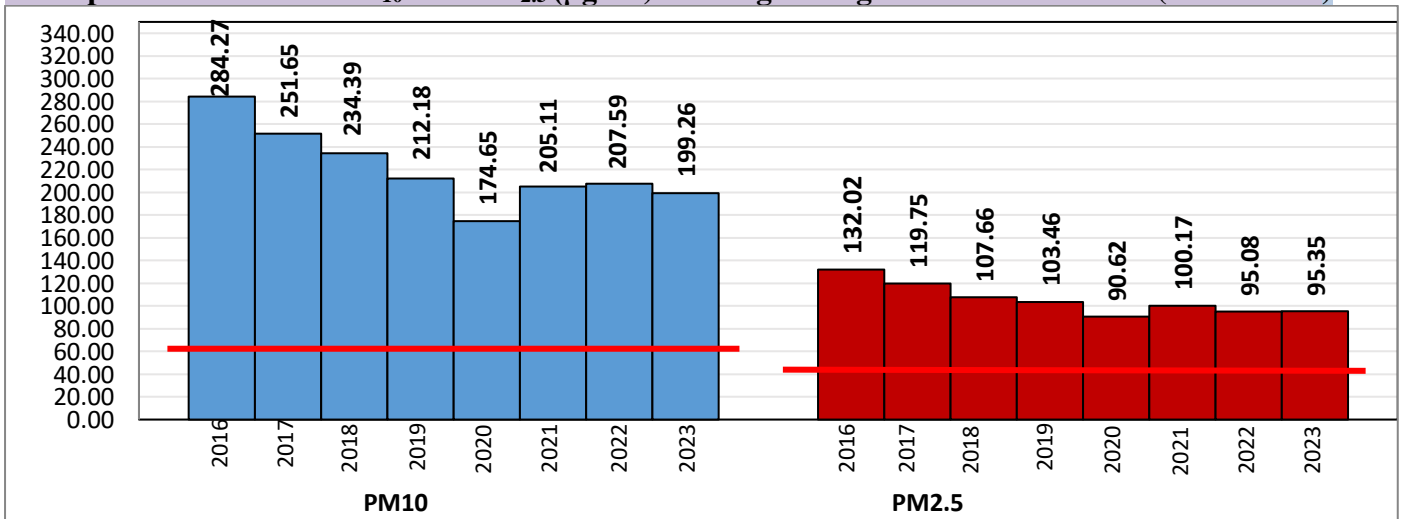
	2023			2022			2021(Covid- Year)		
	Air Quality	AQI Value	Prominent Pollutant	Air Quality	AQI Value	Prominent Pollutant	Air Quality	AQI Value	Prominent Pollutant
Delhi	Poor	285↓	PM2.5	Very Poor	366 ↓	PM2.5	Very Poor	332↑	PM2.5
Faridabad	Poor	228↑	PM2.5	Very Poor	340 ↓	PM10, PM2.5	Poor	289↑	PM2.5
Ghaziabad	Poor	236↑	PM2.5	Very Poor	333 ↓	PM2.5	Very Poor	324↑	PM2.5
Greater Noida	Poor	241↑	PM2.5	Very Poor	392 ↓	PM2.5	Poor	290↑	PM2.5
Gurugram	Moderate	184↓	PM2.5	Very Poor	364 ↓	PM2.5	Poor	284↑	PM2.5
Noida	Poor	208↑	PM2.5	Very Poor	324 ↓	PM2.5	Very Poor	303↑	PM2.5

*Data available for 36(2023), 37(2022), 33(2021) stations in Delhi today. # ↑, ↓ arrows indicate a decrease/increase as compared to the value on the previous day.

Comparative status of AQI - Delhi from 01 January to 20 December 2016-2023

Category	Year	2016	2017	2018	2019	2020	2021	2022	2023	2016	2017	2018	2019	2020	2021	2022	2023
	No. of days	343	354	354	354	355	354	354	354	2016	2017	2018	2019	2020	2021	2022	2023
Good (0–50)		0	2	0	2	4	1	3	1								
Satisfactory (51–100)		24	45	53	59	96	72	65	60	110	153	158	182	227	197	163	206
Moderate (101–200)		86	106	105	121	127	124	95	145								
Poor (201–300)		119	112	113	102	72	77	130	77								
Very Poor (301–400)		89	81	67	50	44	62	55	59	233	201	196	172	128	157	191	148
Severe (>401)		25	8	16	20	12	18	6	12								

Comparative status of PM₁₀ and PM_{2.5} (µg/m³) running average - Till December 19 (2016- 2023)



*Red line shows the annual average concentration standards for PM₁₀ and PM_{2.5}.

Daily Average of Particulates in Delhi (24 hourly average value; from 06:00am of 19.12.23 to 06:00 am of 20.12.23)

Date ↓ / parameter →	PM _{2.5} (µg/m ³)	PM ₁₀ (µg/m ³)
19- December -2023	132↓	244↑

Hotspots for Today: *Details given below

Delhi	Nehru Nagar, Jahangirpuri, Burari Crossing, Bawana, Narela	Ghaziabad	Loni, Sanjay Nagar
Faridabad	New Industrial Town, Sector 16A	Greater Noida	Knowledge Park -V
Gurugram	Teri Gram, NISE Gwal Pahari	Noida	Sector-62

Forecast by IITM (Delhi):

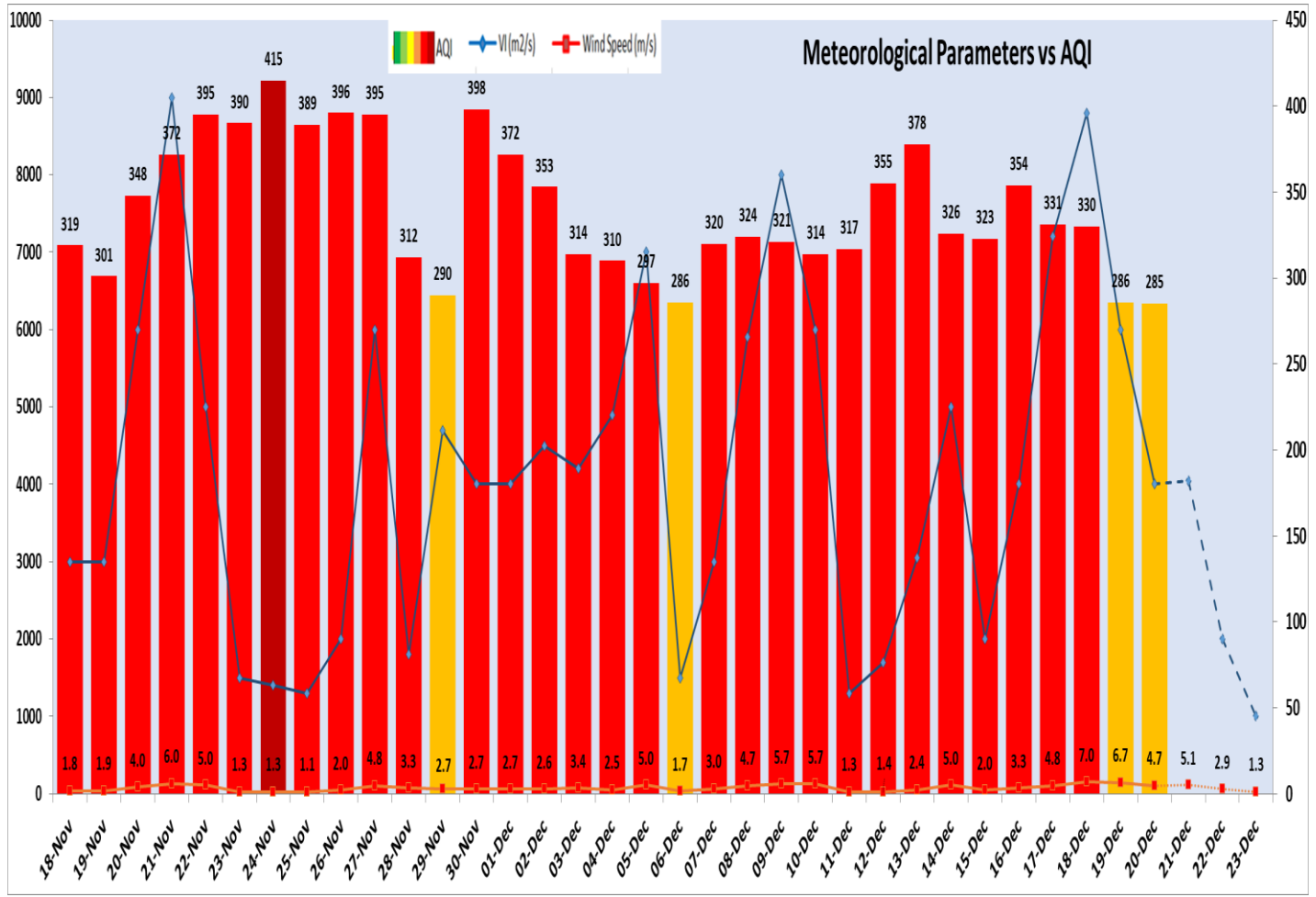
	Dec 21, 2023	Dec 22, 2023	Dec 23, 2023
AQI Category	Very Poor	Very Poor	Very Poor

Wind Forecast for Delhi:

	Wind speed (at surface) in km/h		Wind speed (at 900 m) in km/h	Wind Direction	
	As per IMD (range)	As per windy.com (at 16:00 hrs.)	As per windy.com (at 16:00hrs)	As per IMD	As per windy.com at 900m
Dec 21. 2023	06-10	8	39	NW	NW
Dec 22. 2023	04-06	7	16	NE/NW	NW
Dec 23. 2023	06	7	07	NE/SE	E

IMD Alert for Tomorrow (21.12.2023):

The air quality is likely to remain in Very Poor category on 20.12.2023 and 21.12.2023. The predominant surface wind is likely to be coming from Northwest direction in Delhi with wind speed 06-10 kmph, partly cloudy sky and shallow fog in the morning on 21.12.2023. Ventilation index is likely to be 4050 m²/s.



Delhi Temperature in (°C)		
Date	Minimum	Maximum
17-12-2023	6.5	24.7
18-12-2023	7.1	24.7
19-12-2023	7.8	22.3
20-12-2023	6.2	23.5

▪ **Hotspots for Today**

City	Station Name	AQI value	Air Quality	Prominent Pollutant
Delhi	Nehru Nagar, Delhi - DPCC	366	Very Poor	PM _{2.5}
	Jahangirpuri, Delhi - DPCC	343	Very Poor	PM _{2.5}
	Burari Crossing, Delhi - IMD	330	Very Poor	PM _{2.5}
	Bawana, Delhi - DPCC	327	Very Poor	PM _{2.5}
	Narela, Delhi - DPCC	319	Very Poor	PM _{2.5}
Faridabad	New Industrial Town, Faridabad - HSPCB	304	Very Poor	PM _{2.5}
	Sector- 16A, Faridabad - HSPCB	236	Poor	PM _{2.5}
Gurugram	Teri Gram, Gurugram - HSPCB	255	Poor	PM _{2.5}
	NISE Gwal Pahari, Gurugram - IMD	196	Moderate	PM _{2.5}
Ghaziabad	Loni, Ghaziabad - UPPCB	275	Poor	PM _{2.5}
	Sanjay Nagar, Ghaziabad - UPPCB	260	Poor	PM _{2.5}
Greater Noida	Knowledge Park - V, Greater Noida - UPPCB	270	Poor	PM _{2.5}
Noida	Sector - 62, Noida - IMD	248	Poor	PM _{2.5}