



# Central Pollution Control Board

Air Quality Status for Delhi & NCR

Dated – December 20, 2022



## Current Air Quality Status:

### Air Quality Index (AQI) (Average of past 24 hours)

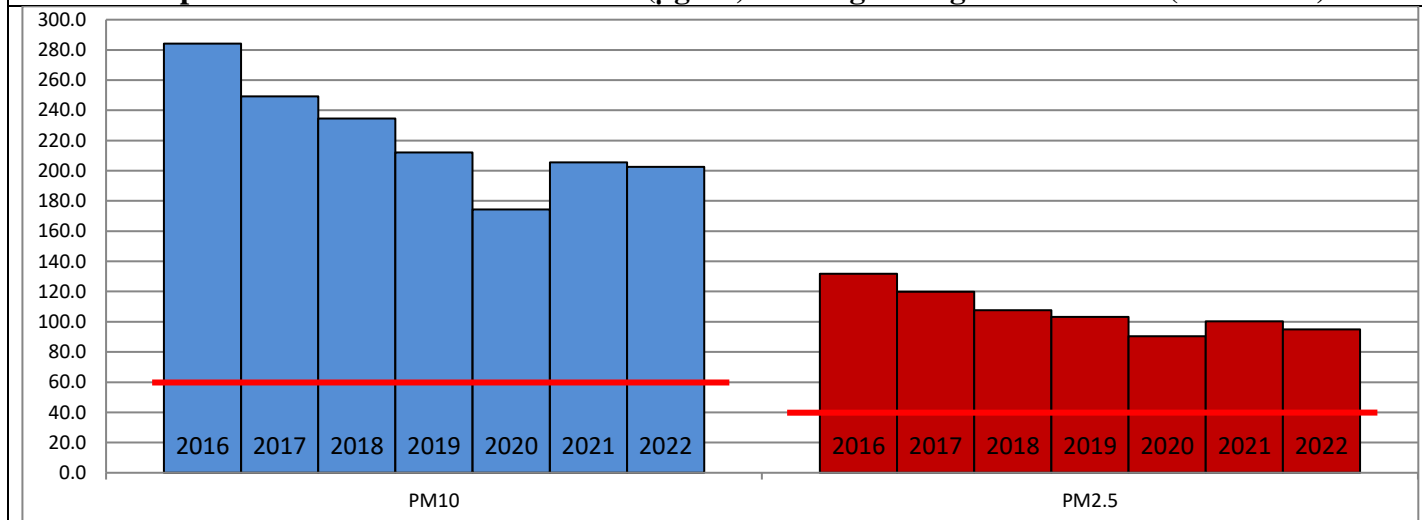
	Air Quality	AQI Value	Prominent Pollutant
Delhi	Very Poor	366 ↓	PM <sub>2.5</sub>
Faridabad	Very Poor	340 ↓	PM <sub>10</sub> , PM <sub>2.5</sub>
Ghaziabad	Very Poor	333 ↓	PM <sub>2.5</sub>
Greater Noida	Very Poor	392 ↓	PM <sub>2.5</sub>
Gurugram	Very Poor	364 ↓	PM <sub>2.5</sub>
Noida	Very Poor	324 ↓	PM <sub>2.5</sub>

\*Data available for 37 stations in Delhi today. # ↓ ↑ arrows indicate a decrease/increase as compared to the value on the previous day.

### Comparative status of AQI - Delhi from 01 January to 20 December 2016-2022

Category	Year	2016	2017	2018	2019	2020	2021	2022	2016	2017	2018	2019	2020	2021	2022
	No. of days	343	354	354	354	355	354	354							
Good (0–50)		0	2	0	2	5	1	3							
Satisfactory (51–100)		24	45	53	59	95	81	65	110	152	159	182	227	197	163
Moderate (101–200)		86	105	106	121	127	115	95							
Poor (201–300)		119	114	114	103	72	77	130							
Very Poor (301–400)		92	80	67	49	44	62	55	233	202	195	172	128	157	191
Severe (>401)		22	8	14	20	12	18	6							

### Comparative status of PM<sub>10</sub> and PM<sub>2.5</sub> (µg/m<sup>3</sup>) running average – Till Dec 19 (2016-2022)



### Hotspots for Today:

\*Details given overleaf

Delhi	Nehru Nagar, Patparganj, Jahangirpuri, Anand Vihar, Punjabi Bagh	Ghaziabad	Vasundhara
Faridabad	New Industrial Town, Sector-16A	Greater Noida	Knowledge Park -III
Gurugram	Teri Gram, Vikas Sadan	Noida	Sector-62, Sector-116

### Forecast by IITM (Delhi):

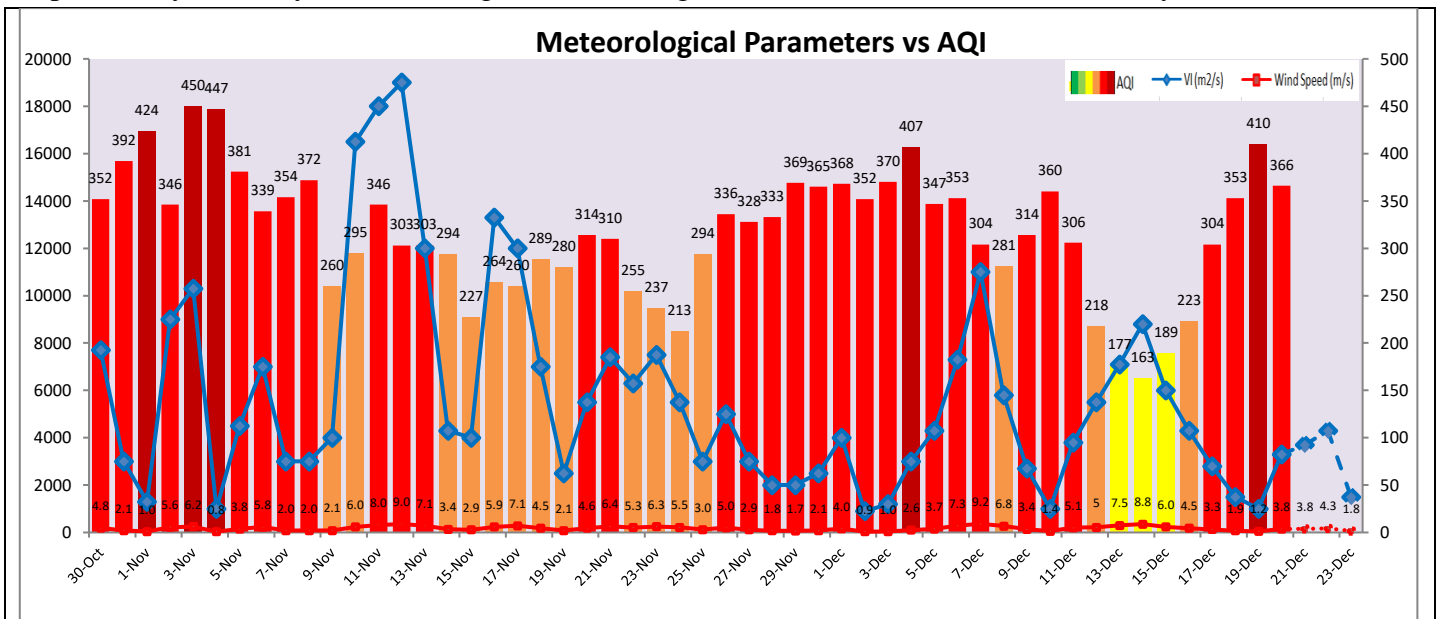
	Dec 21, 2022		Dec 22, 2022- Dec 23, 2022	
	Concentration	AQI Category	Concentration	AQI Category
PM <sub>10</sub>	313	Poor	341	Poor
PM <sub>2.5</sub>	207	Very Poor	226	Very Poor

## Wind Forecast for Delhi:

	Wind speed (at surface) in km/h		Wind speed (at 900 m) in km/h	Wind Direction	
	As per IMD (range)	As per windy.com (at 16:00 hrs.)	As per windy.com (at 16:00hrs)	As per IMD	As per windy.com at 900m
Dec 21, 2022	08-10	10	13	NW	NW
Dec 22, 2022	06-10	10	20	NW	NW
Dec 23, 2022	04	06	13	N	N

## IMD Alert for Tomorrow (21.12.2022):

The air quality is likely to improve marginally but remain in Very Poor category on 21.12.2022 and 22.12.2022. The predominant surface wind is likely to be coming from Northwest direction in Delhi with wind speed 08-10 kmph, mainly clear sky and dense fog in the morning tomorrow. Ventilation index is likely to be 3,700 m<sup>2</sup>/s.



## Hotspots for Today

City	Station Name	AQI value	Air Quality	Prominent Pollutant
Delhi	Nehru Nagar, Delhi - DPCC	430	Severe	PM <sub>2.5</sub>
	Jahangirpuri, Delhi - DPCC	418	Severe	PM <sub>2.5</sub>
	Anand Vihar, Delhi - DPCC	415	Severe	PM <sub>2.5</sub>
	Patparganj, Delhi - DPCC	415	Severe	PM <sub>2.5</sub>
	Punjabi Bagh, Delhi - DPCC	406	Severe	PM <sub>2.5</sub>
Faridabad	New Industrial Town, Faridabad - HSPCB	389	Very Poor	PM <sub>10</sub>
	Sector- 16A, Faridabad - HSPCB	385	Very Poor	PM <sub>2.5</sub>
Gurugram	Teri Gram, Gurugram - HSPCB	381	Very Poor	PM <sub>2.5</sub>
	Vikas Sadan, Gurugram - HSPCB	370	Very Poor	PM <sub>2.5</sub>
Ghaziabad	Vasundhara, Ghaziabad - UPPCB	393	Very Poor	PM <sub>2.5</sub>
Greater Noida	Knowledge Park - III, Greater Noida - UPPCB	399	Very Poor	PM <sub>2.5</sub>
Noida	Sector-116, Noida - UPPCB	390	Very Poor	PM <sub>2.5</sub>
	Sector - 62, Noida - IMD	384	Very Poor	PM <sub>2.5</sub>