



Central Pollution Control Board

Air Quality Status for Delhi & NCR

Dated – November 20, 2022



Current Air Quality Status:

Air Quality Index (AQI) (Average of past 24 hours)

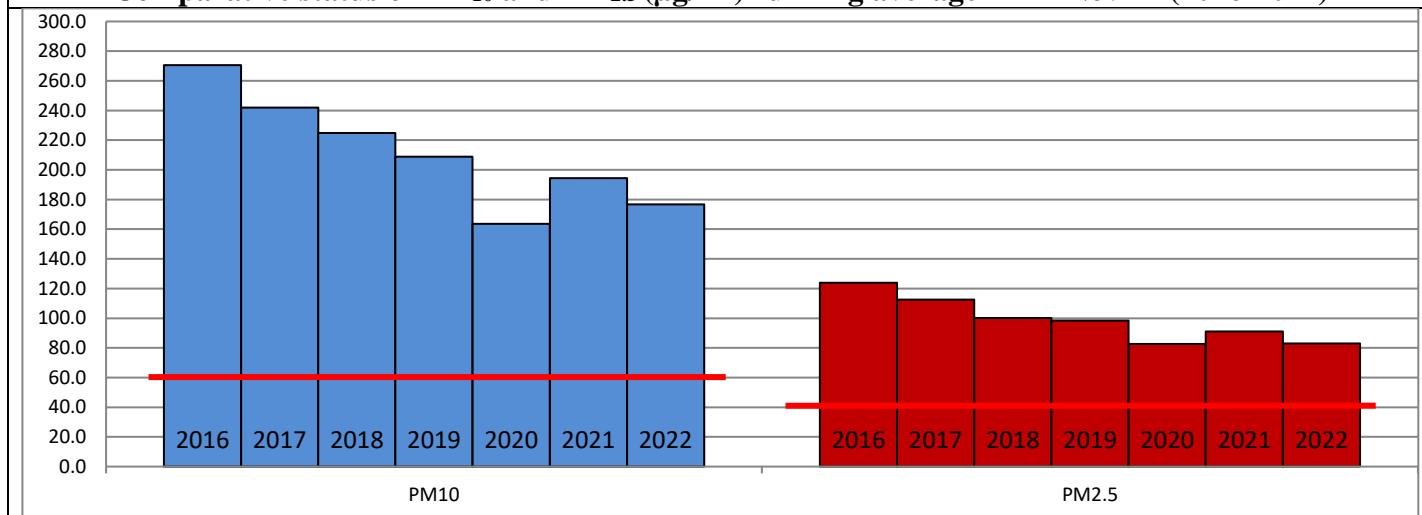
	Air Quality	AQI Value	Prominent Pollutant
Delhi	Poor	314 ↓	PM ₁₀ , PM _{2.5}
Faridabad	Poor	260 ↑	PM _{2.5}
Ghaziabad	Poor	259 ↓	PM ₁₀
Greater Noida	Poor	288 ↑	PM ₁₀ , PM _{2.5}
Gurugram	Poor	284 ↑	PM _{2.5}
Noida	Poor	254 ↑	PM _{2.5}

*Data available for 36 stations in Delhi today. # ↓ ↑ arrows indicate a decrease/increase as compared to the value on the previous day.

Comparative status of AQI - Delhi from 01 January to 20 November 2016-2022

Category	Year	2016	2017	2018	2019	2020	2021	2022	2016	2017	2018	2019	2020	2021	2022
	No. of days	313	324	324	324	325	324	324							
Good (0–50)		0	2	0	2	5	1	3							
Satisfactory (51–100)		24	45	53	58	95	81	65	110	150	158	175	225	197	160
Moderate (101–200)		86	103	105	115	125	115	92							
Poor (201–300)		116	104	107	93	60	69	123							
Very Poor (301–400)		69	62	47	40	30	44	37	203	174	166	149	100	127	164
Severe (>401)		18	8	12	16	10	14	4							

Comparative status of PM₁₀ and PM_{2.5} (µg/m³) running average – Till Nov 17 (2016-2022)



Hotspots for Today:

*Details given overleaf

Delhi	NSIT Dwarka, Anand Vihar, Jahangirpuri, ITO, Shadipur	Ghaziabad	Vasundhara, Loni
Faridabad	Sector- 11, Sector-16A	Greater Noida	Knowledge Park-V
Gurugram	Vikas Sadan	Noida	Sector – 62, Sector-116

Forecast by IITM (Delhi):

	Nov 21, 2022		Nov 22, 2022- Nov 23, 2022	
	Concentration	AQI Category	Concentration	AQI Category
PM ₁₀	217	Moderate	239	Moderate
PM _{2.5}	135	Very Poor	148	Very Poor

Wind Forecast for Delhi:

	Wind speed (at surface) in km/h		Wind speed (at 900 m) in km/h	Wind Direction	
	As per IMD (range)	As per windy.com (at 16:00 hrs.)	As per windy.com (at 16:00hrs)	As per IMD	As per windy.com at 900m
Nov 21, 2022	Upto 06	09	28	NW	NW
Nov 22, 2022	Upto 06	09	28	NW	NW
Nov 23, 2022	Upto 06	10	34	NW	NW

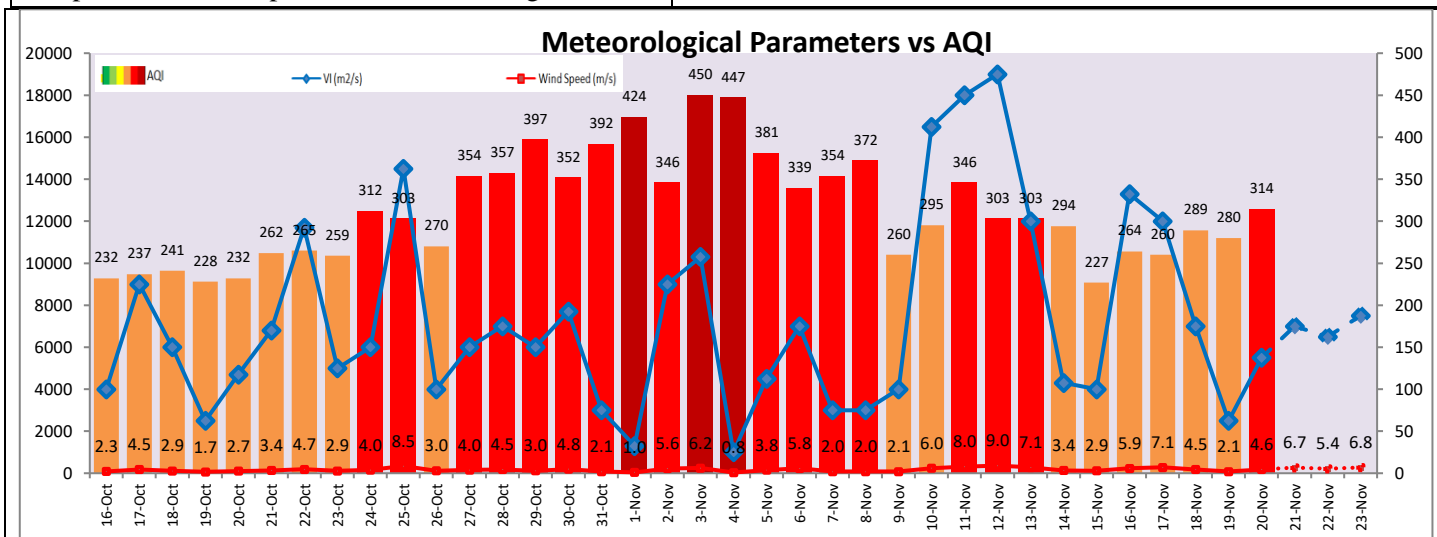
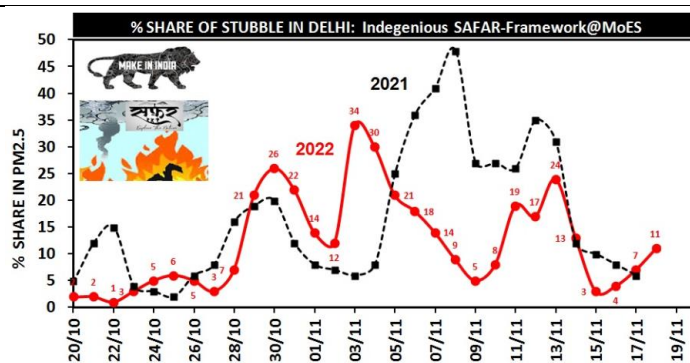
IMD Alert for Tomorrow (21.11.2022):

The air quality is likely to remain in Poor category from 21.11.2022 to 23.11.2022. The predominant surface wind is likely to be coming from Northwest direction in Delhi with wind speed upto 06 kmph, mainly clear sky and mist in the morning tomorrow. Ventilation index is likely to be 7,000 m²/s.

Active Fire Events (AFE):

Date	Punjab		Haryana	
	Nos. on the day	Total since September 15	Nos. on the day	Total since September 15
20.11.2022	368	49283	32	3491
20.11.2021	283	70856	127	6464

* As per IITM, the impact of stubble burning is ~11%.



Hotspots for Today

City	Station Name	AQI value	Air Quality	Prominent Pollutant
Delhi	Anand Vihar, Delhi - DPCC	384	Very Poor	PM ₁₀
	Shadipur, Delhi - CPCB	375	Very Poor	PM _{2.5}
	NSIT Dwarka, Delhi - CPCB	350	Very Poor	PM ₁₀
	Jahangirpuri, Delhi - DPCC	347	Very Poor	PM _{2.5}
	ITO, Delhi - CPCB	340	Very Poor	PM _{2.5}
Faridabad	Sector- 16A, Faridabad - HSPCB	294	Poor	PM _{2.5}
	Sector 11, Faridabad - HSPCB	285	Poor	PM _{2.5}
Gurugram	Vikas Sadan, Gurugram - HSPCB	310	Very Poor	PM _{2.5}
Ghaziabad	Vasundhara, Ghaziabad - UPPCB	300	Poor	PM ₁₀
	Loni, Ghaziabad - UPPCB	265	Poor	PM _{2.5}
Greater Noida	Knowledge Park - V, Greater Noida - UPPCB	292	Poor	PM ₁₀
Noida	Sector - 62, Noida - IMD	314	Very Poor	PM _{2.5}
	Sector-116, Noida - UPPCB	275	Poor	PM _{2.5}