



Central Pollution Control Board

Air Quality Status for Delhi & NCR

Dated - October 20, 2023



Current Air Quality Status:

Air Quality Index (AQI) (Average of past 24 hours at 4 PM)

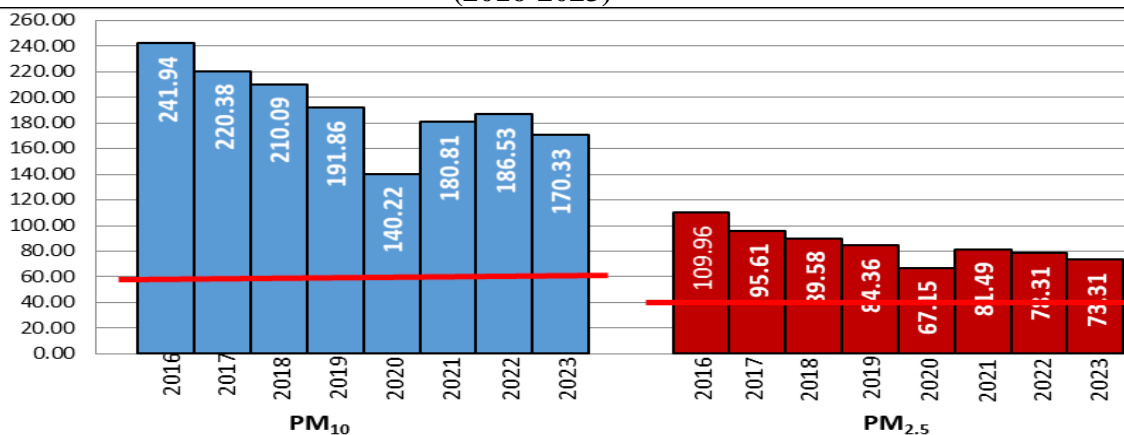
	Air Quality	AQI Value	Prominent Pollutant
Delhi	Moderate	195 ↑	PM _{2.5} , O ₃
Faridabad	Poor	291 ↑	PM _{2.5}
Ghaziabad	Moderate	195 ↑	PM _{2.5} , O ₃
Greater Noida	Poor	238 ↑	PM ₁₀ , PM _{2.5}
Gurugram	Moderate	171 ↑	PM _{2.5}
Noida	Poor	214 ↑	O ₃ , PM ₁₀

*Data available for 35 stations in Delhi today. # ↑, ↓ arrows indicate a decrease/increase as compared to the value on the previous day.

Comparative status of AQI - Delhi from 01 January to 20 October 2016-2023

Category	Year	2016	2017	2018	2019	2020	2021	2022	2023	2016	2017	2018	2019	2020	2021	2022	2023
	No. of days	282	293	293	293	294	293	293	293	2016	2017	2018	2019	2020	2021	2022	2023
Good (0-50)		0	2	0	2	4	1	3	1								
Satisfactory (51-100)		24	45	53	58	96	71	65	60	110	151	156	174	224	191	160	206
Moderate (101-200)		86	104	103	114	124	119	92	145								
Poor (201-300)		109	101	99	82	52	63	111	63								
Very Poor (301-400)		56	41	32	30	16	33	21	21	172	142	137	119	70	102	133	87
Severe (>401)		7	0	6	7	2	6	1	3								

Comparative status of PM₁₀ and PM_{2.5} (µg/m³) running average - Till October 19 (2016-2023)



Daily Average of Particulates in Delhi

Date ↓ / parameter →	PM _{2.5} (µg/m ³)	PM ₁₀ (µg/m ³)
19- October -2023	71	156

Hotspots for Today:

*Details given below

Delhi	Bawana, R K Puram, Burari Crossing, Nehru Nagar, Rohini,	Ghaziabad	Loni
Faridabad	Sector 11	Greater Noida	Knowledge Park -V
Gurugram	Sector 51, Teri Gram	Noida	Sector - 1

▪ **Wind Forecast for Delhi:**

	Wind speed (at surface) in km/h		Wind speed (at 900 m) in km/h	Wind Direction	
	As per IMD (range)	As per windy.com (at 16:00 hrs.)	As per windy.com (at 16:00hrs)	As per IMD	As per windy.com at 900m
Oct 21, 2023	08	07	09	N/NE	NW
Oct 22, 2023	08-12	06	13	N/NE	NW
Oct 23, 2023	04-08	06	12	NE	NW

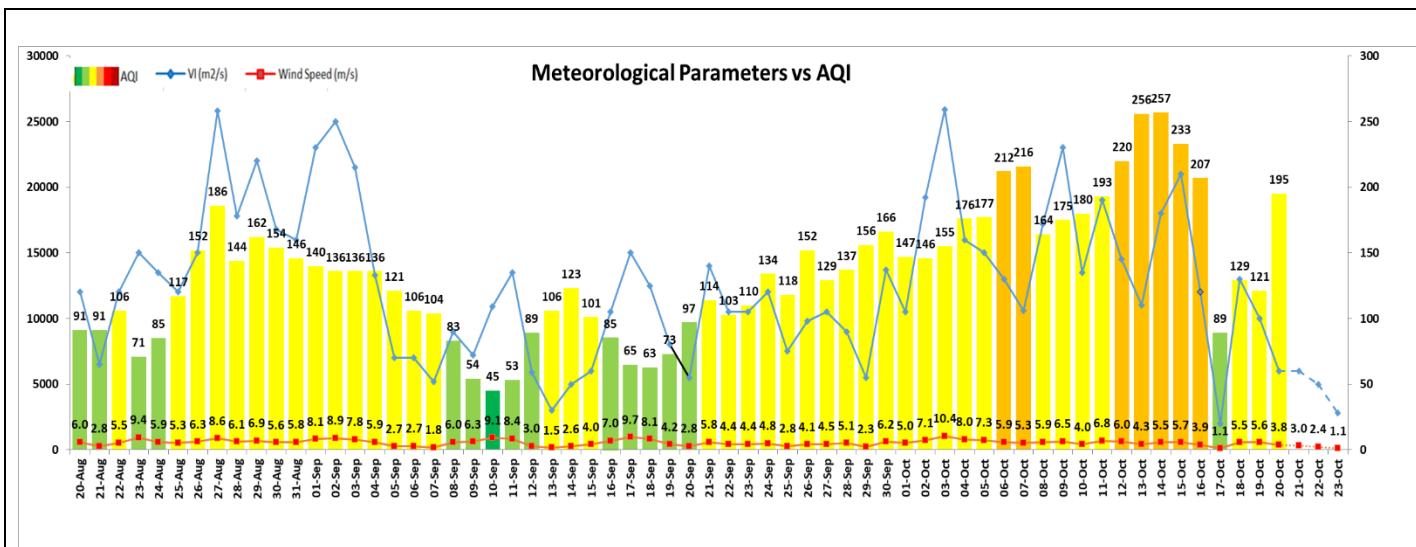
▪ **IMD Alert for Tomorrow (21.10.2023):**

The air quality is likely to be in Poor category from 21.10.2023 to 22.10.2023. The predominant surface wind is likely to be coming from North/ Northeast directions in Delhi with wind speed 08 kmph, mainly clear sky and mist in morning on 21.10.2023. Ventilation index is likely to be 6000 m²/s.

▪ **Active Fire Events (AFE):**

Date	Panjab		Haryana	
	Nos. on the day	Total since September 15	Nos. on the day	Total since September 15
19.10.2023	-	-	-	-
19.10.2022	436	2625	122	586

- **NB.** Due to non-reception of satellite data the daily Bulletin "Monitoring Paddy Residue Burning in India using Satellite Remote Sensing During 2023" for 19-Oct-2023 (Bulletin 35) for could not be prepared by IARI.



▪ **Hotspots for Today**

City	Station Name	AQI value	Air Quality	Prominent Pollutant
Delhi	Bawana, Delhi - DPCC	311	Very Poor	PM _{2.5}
	R K Puram, Delhi - DPCC	278	Poor	O ₃
	Burari Crossing, Delhi - IMD	264	Poor	PM _{2.5}
	Nehru Nagar, Delhi - DPCC	258	Poor	O ₃
	Rohini, Delhi - DPCC	250	Poor	PM ₁₀
Faridabad	Sector 11, Faridabad - HSPCB	291	Poor	PM _{2.5}
Gurugram	Sector-51, Gurugram - HSPCB	234	Poor	PM _{2.5}
	Teri Gram, Gurugram - HSPCB	190	Moderate	PM _{2.5}
Ghaziabad	Loni, Ghaziabad - UPPCB	330	Very Poor	PM _{2.5}
Greater Noida	Knowledge Park - V, Greater Noida - UPPCB	261	Poor	PM ₁₀
Noida	Sector-1, Noida - UPPCB	278	Poor	O ₃