



Central Pollution Control Board

Air Quality Status for Delhi & NCR

Dated – October 20, 2022



Current Air Quality Status:

Air Quality Index (AQI) (Average of past 24 hours)

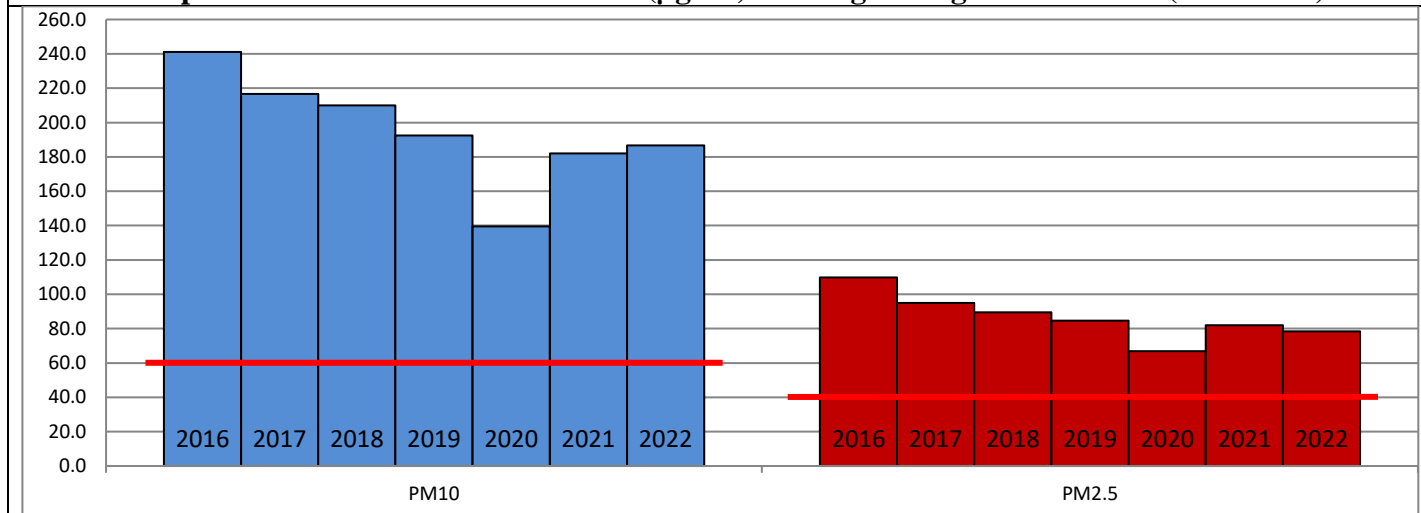
	Air Quality	AQI Value	Prominent Pollutant
Delhi	Poor	232 ↓	PM ₁₀ , PM _{2.5}
Faridabad	Poor	296 ↓	PM ₁₀ , PM _{2.5}
Ghaziabad	Poor	252 ↓	PM ₁₀ , PM _{2.5}
Greater Noida	Poor	216 ↓	PM ₁₀
Gurugram	Moderate	189 ↑	PM _{2.5} , PM ₁₀
Noida	Poor	231 ↓	PM ₁₀ , O ₃

*Data available for 33 stations in Delhi today. # ↓ ↑ arrows indicate a decrease/increase as compared to the value on the previous day.

Comparative status of AQI - Delhi from 01 January to 20 October 2016-2022

Category	Year	2016	2017	2018	2019	2020	2021	2022	2016	2017	2018	2019	2020	2021	2022
	No. of days	282	293	293	293	294	293	293							
Good (0–50)		0	2	0	2	5	1	3							
Satisfactory (51–100)		24	45	53	58	95	80	65	110	150	157	175	224	191	160
Moderate (101–200)		86	103	104	115	124	110	92							
Poor (201–300)		112	102	100	83	52	63	111							
Very Poor (301–400)		54	40	30	28	16	33	21	172	143	136	118	70	102	133
Severe (>401)		6	1	6	7	2	6	1							

Comparative status of PM₁₀ and PM_{2.5} (µg/m³) running average – Till Oct 18 (2016-2022)



Hotspots for Today:

*Details given overleaf

Delhi	Anand Vihar, Mundka, Shadipur, Bawana, NSIT Dwarka	Ghaziabad	Indirapuram, Vasundhara
Faridabad	New Industrial Town, Sector-30	Greater Noida	Knowledge Park-V
Gurugram	Sector-51	Noida	Sector-116,

Forecast by IITM (Delhi):

	Oct 21, 2022		Oct 22, 2022- Oct 23, 2022	
	Concentration	AQI Category	Concentration	AQI Category
PM ₁₀	219	Moderate	259	Poor
PM _{2.5}	95	Poor	113	Poor

Wind Forecast for Delhi:

	Wind speed (at surface) in km/h		Wind speed (at 900 m) in km/h	Wind Direction	
	As per IMD (range)	As per windy.com (at 16:00 hrs.)	As per windy.com (at 16:00hrs)	As per IMD	As per windy.com at 900m
Oct 21, 2022	08-15	06	19	Variable	W
Oct 22, 2022	08	08	21	N	NW
Oct 23, 2022	06-12	09	15	N/NE	N

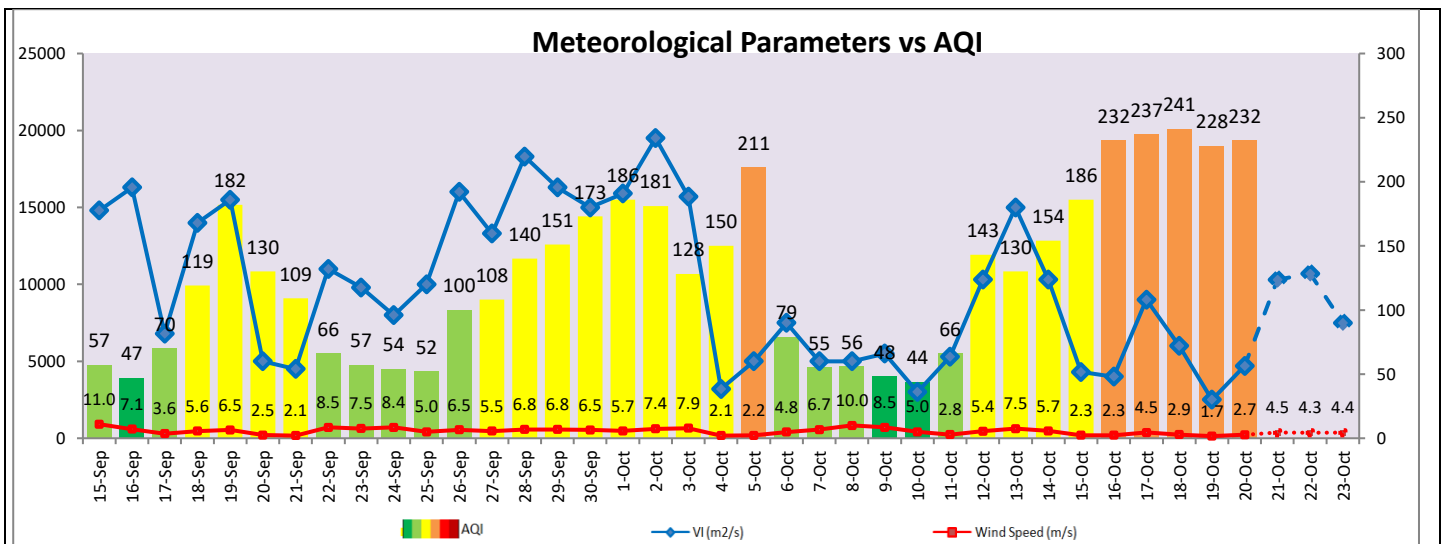
IMD Alert for Tomorrow (21.10.2022):

The overall air quality over Delhi is likely to remain in Poor category on 21.10.2022. The predominant surface wind is likely to be coming from variable directions in Delhi with wind speed 08-15 kmph and mainly clear sky tomorrow. Ventilation index is likely to be 10,300 m²/s.

Active Fire Events (AFE):

Date	Punjab		Haryana	
	Nos. on the day	Total since September 15	Nos. on the day	Total since September 15
20.10.2022	96	2721	78	664
20.10.2021	788	3730	155	1237

* As per IITM, the impact of stubble burning is negligible.



Hotspots for Today

City	Station Name	AQI value	Air Quality	Prominent Pollutant
Delhi	Anand Vihar, Delhi - DPCC	406	Severe	PM ₁₀
	Shadipur, Delhi - CPCB	363	Very Poor	PM _{2.5}
	NSIT Dwarka, Delhi - CPCB	348	Very Poor	PM _{2.5}
	Mundka, Delhi - DPCC	295	Poor	PM ₁₀
	Bawana, Delhi - DPCC	294	Poor	PM ₁₀
Faridabad	New Industrial Town, Faridabad - HSPCB	340	Very Poor	PM ₁₀
	Sector 30, Faridabad - HSPCB	318	Very Poor	PM _{2.5}
Gurugram	Sector-51, Gurugram - HSPCB	290	Poor	PM _{2.5}
Ghaziabad	Indirapuram, Ghaziabad - UPPCB	264	Poor	PM ₁₀
	Vasundhara, Ghaziabad - UPPCB	261	Poor	PM ₁₀
Greater Noida	Knowledge Park - V, Greater Noida - UPPCB	261	Poor	PM ₁₀
Noida	Sector-116, Noida - UPPCB	292	Poor	PM ₁₀