



Central Pollution Control Board

Air Quality Status for Delhi &NCR

Dated – March 20, 2022



Current Air Quality Status:

Air Quality Index (AQI) (Average of past 24 hours)

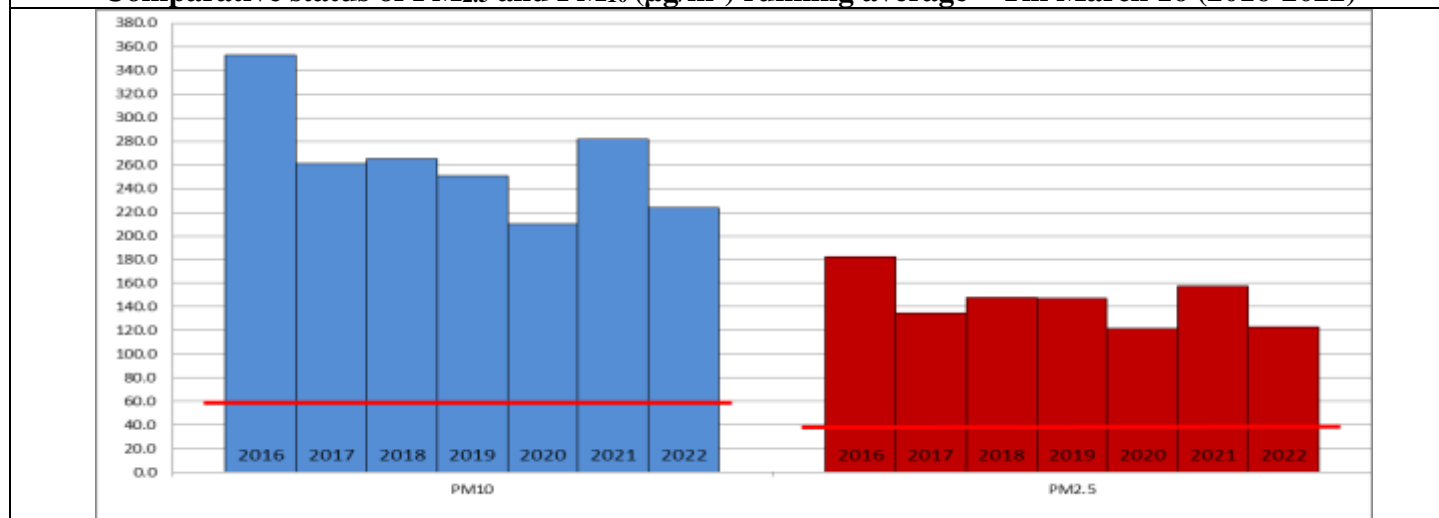
	Air Quality	AQI Value	Prominent Pollutant
Delhi	Poor	242 ↓	PM ₁₀ , PM _{2.5}
Faridabad	Poor	202 ↓	PM ₁₀ , PM _{2.5}
Ghaziabad	Poor	291 ↑	PM _{2.5}
Greater Noida	Poor	242 ↓	O ₃
Gurugram	Poor	228 ↓	PM _{2.5}
Noida	Poor	230 ↑	PM _{2.5}

*Data available for 38 stations in Delhi today. # ↑ ↓ arrows indicate increase/decrease as compared to value on the previous day

Comparative status of AQI - Delhi from 01 January to 20 March 2016-2022

Category	Year	2016	2017	2018	2019	2020	2021	2022	2016	2017	2018	2019	2020	2021	2022
		No. of days	76	79	79	79	80	79	79						
Good (0–50)		0	0	0	0	0	0	0							
Satisfactory (51–100)		0	0	0	1	5	0	3	5	13	19	25	28	8	25
Moderate (101–200)		5	13	19	24	23	8	22							
Poor (201–300)		24	42	36	26	35	34	36							
Very Poor (301–400)		41	24	21	21	15	31	17	71	66	60	54	52	71	54
Severe (>401)		6	0	3	7	2	6	1							

Comparative status of PM_{2.5} and PM₁₀ (µg/m³) running average – Till March 16 (2016-2022)



Hotspots for Today:

*Details given overleaf

Delhi	Bawana, ITO, R K Puram, Narela, Nehru Nagar	Gurugram	Sector-51, Vikas Sadan
Faridabad	Sector- 16A	Greater Noida	Knowledge Park - V
Ghaziabad	Sanjay Nagar, Loni	Noida	Sector – 125, Sector - 62

Forecast by IITM:

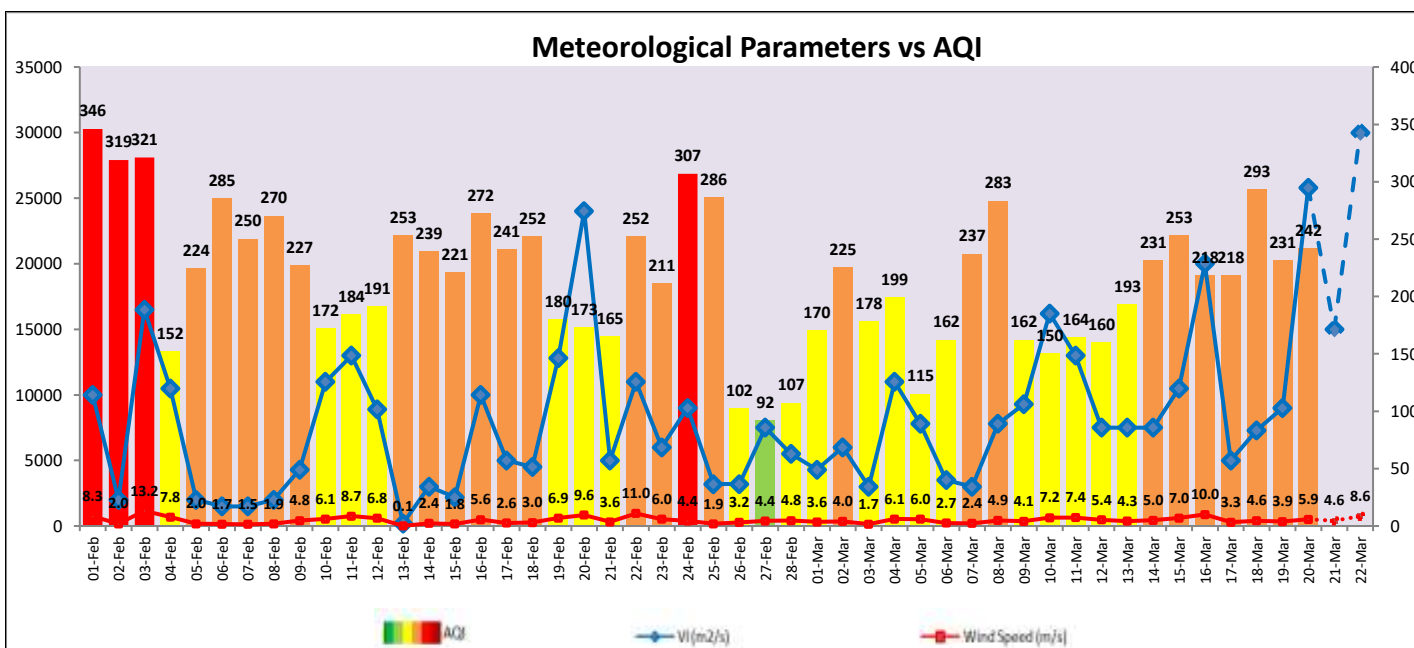
Parameters	March 21, 2022		March 22, 2022- March 23, 2022	
	Concentration	AQI Category	Concentration	AQI Category
PM ₁₀	233	Moderate	256	Poor
PM _{2.5}	104	Poor	114	Poor

Wind Forecast for Delhi:

	Wind speed (at surface) in km/h		Wind speed (at 900 m) in km/h	Wind Direction	
	As per IMD (at 17:30 hrs.)	As per windy.com (at 16:00 hrs.)	As per windy.com (at 16:00hrs)	As per IMD (at 17:30hrs.)	As per windy.com at 900m
March 21, 2022	08	14	38	NW	NW
March 22, 2022	08	08	20	NW	NW
March 23, 2022	08	08	18	W	W

IMD Alert for Tomorrow (21.03.2022):

The air quality is likely to improve and remain in Poor to Moderate category on 21.03.2022 and Moderate category on 22.03.2022. The predominant surface wind is likely to be coming from Northeast/Northwest direction of Delhi with wind speed 05-12 kmph and clear sky tomorrow. Ventilation index is likely to be 15,000 m²/s.



Hotspots for Today

City	Station Name	AQI value	Air Quality	Prominent Pollutant
Delhi	Bawana, Delhi - DPCC	282	Poor	PM ₁₀
	ITO, Delhi - CPCB	276	Poor	PM _{2.5}
	R K Puram, Delhi - DPCC	276	Poor	PM _{2.5}
	Narela, Delhi - DPCC	273	Poor	PM _{2.5}
	Nehru Nagar, Delhi - DPCC	273	Poor	PM _{2.5}
Faridabad	Sector- 16A, Faridabad - HSPCB	263	Poor	PM _{2.5}
Gurugram	Sector-51, Gurugram - HSPCB	244	Poor	PM _{2.5}
	Vikas Sadan, Gurugram - HSPCB	225	Poor	PM _{2.5}
Ghaziabad	Sanjay Nagar, Ghaziabad - UPPCB	338	Very Poor	PM _{2.5}
	Loni, Ghaziabad - UPPCB	337	Very Poor	PM _{2.5}
Greater Noida	Knowledge Park - V, Greater Noida - UPPCB	242	Poor	O ₃
Noida	Sector - 125, Noida - UPPCB	272	Poor	PM _{2.5}
	Sector - 62, Noida - IMD	247	Poor	PM _{2.5}