



# Central Pollution Control Board

Air Quality Status for Delhi & NCR

Dated – February 20, 2025



## Current Air Quality Status:

### Air Quality Index (AQI) (Average of past 24 hours at 4 PM) in comparison with last two years

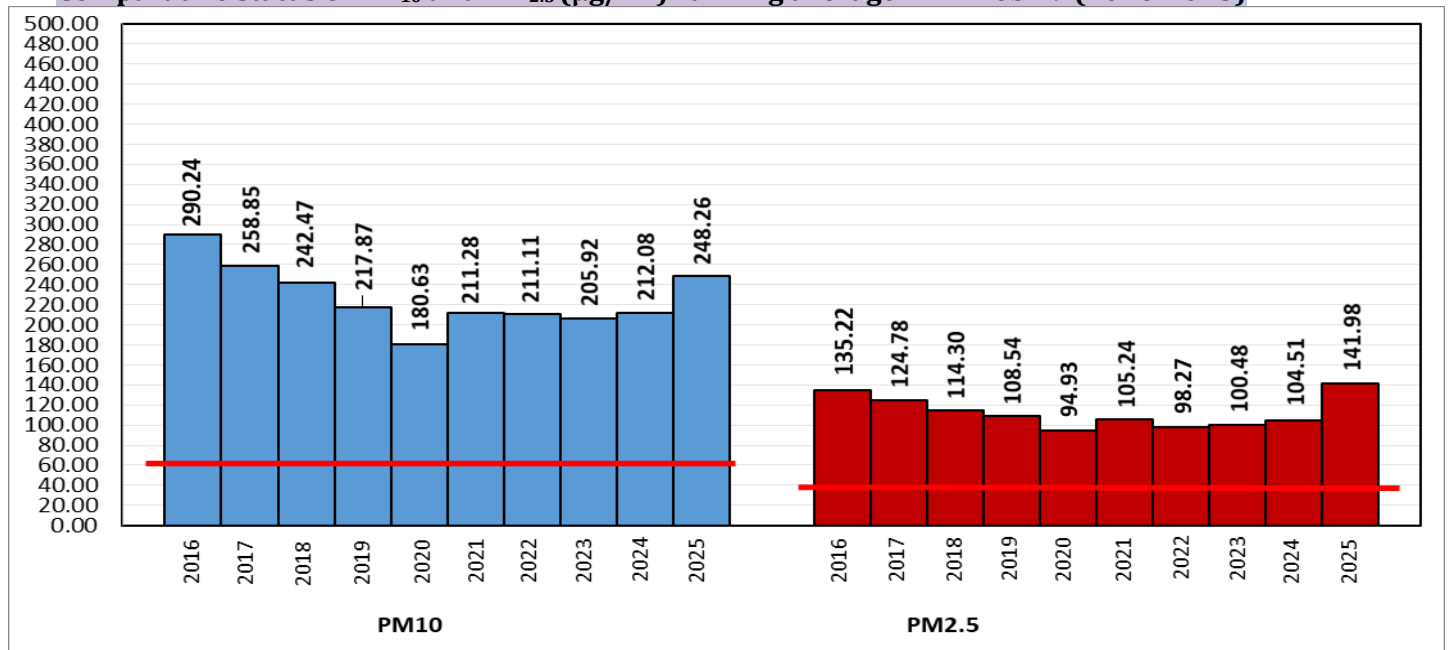
	2025			2024			2023		
	Air Quality	AQI Value	Prominent Pollutant	Air Quality	AQI Value	Prominent Pollutant	Air Quality	AQI Value	Prominent Pollutant
Delhi	Moderate	160↓	PM <sub>2.5</sub> , PM <sub>10</sub>	Poor	226↓	PM <sub>2.5</sub>	Very Poor	324↓	PM <sub>2.5</sub>
Faridabad	Moderate	126↓	PM <sub>2.5</sub> , O <sub>3</sub> , PM <sub>10</sub>	Poor	215↑	PM <sub>2.5</sub>	Poor	273	PM <sub>2.5</sub>
Ghaziabad	Moderate	140↑	PM <sub>2.5</sub>	Moderate	170↓	PM <sub>10</sub> , PM <sub>2.5</sub>	Poor	293↑	PM <sub>10</sub> , PM <sub>2.5</sub>
Greater Noida	Moderate	127↓	PM <sub>10</sub>	Poor	256↑	PM <sub>2.5</sub>	Poor	280↓	PM <sub>2.5</sub>
Gurugram	Moderate	148↓	PM <sub>2.5</sub> , PM <sub>10</sub>	Moderate	183↓	PM <sub>10</sub> , CO, PM <sub>2.5</sub>	Very Poor	304↓	PM <sub>2.5</sub>
Noida	Moderate	123↑	CO, PM <sub>10</sub>	Poor	212↑	PM <sub>2.5</sub>	Poor	298↓	PM <sub>2.5</sub>

\*Data available for 36(2025), 36(2024), 37(2023) stations in Delhi today. # ↑, ↓ arrows indicate a decrease/increase as compared to the value on the previous day.

### Comparative status of AQI - Delhi from 01 January to 20 Feb 2016-2025

Category	Year	2016	2017	2018	2019	2020	2021	2022	2023	2024	2025	2016	2017	2018	2019	2020	2021	2022	2023	2024	2025
	No. of days	51	51	51	51	51	51	51	51	51	51	2016	2017	2018	2019	2020	2021	2022	2023	2024	2025
Good (0-50)		0	0	0	0	0	0	0	0	0	0										
Satisfactory (51-100)		0	0	0	0	0	0	2	0	0	0	0	3	4	5	5	4	11	11	7	9
Moderate (101-200)		0	3	4	5	5	4	9	11	7	9										
Poor (201-300)		11	24	23	18	29	12	23	18	10	24										
Very Poor (301-400)		34	24	21	21	15	29	16	19	31	18	51	48	47	46	46	47	40	40	44	42
Severe (>401)		6	0	3	7	2	6	1	3	3	0										

### Comparative status of PM<sub>10</sub> and PM<sub>2.5</sub> (µg/m<sup>3</sup>) running average - Till Feb 19 (2016-2025)



\*Red line shows the annual average concentration standards for PM<sub>10</sub> and PM<sub>2.5</sub>.

### Daily Average of Particulates in Delhi (24 hourly average value; from 06:00am of 19.02.25 to 06:00 am of 20.02.25)

Date ↓ / parameter →	PM <sub>2.5</sub> (µg/m <sup>3</sup> )	PM <sub>10</sub> (µg/m <sup>3</sup> )
19-Feb-2025	72↓	188↓

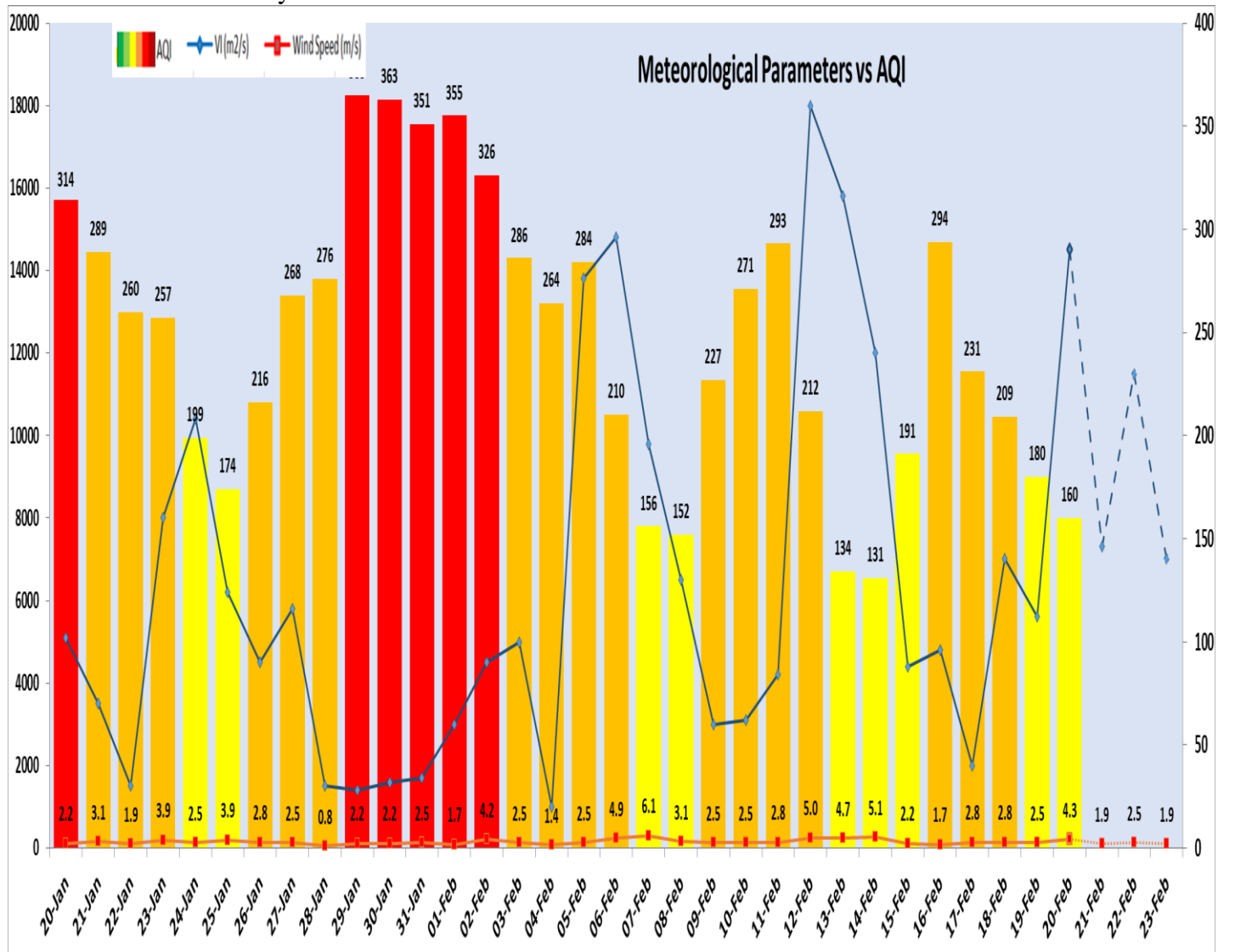
Hotspots for Today:		*Details given below	
Delhi	Wazirpur, Jahangirpuri, Burari Crossing, Alipur, Narela	Ghaziabad	Vasundhara, Loni
Faridabad	New Industrial Town	Greater Noida	Knowledge Park – V
Gurugram	Teri Gram	Noida	Sector - 62, Sector - 116

Forecast by IITM(Delhi):			
	Feb 21, 2025	Feb 22, 2025	Feb 23, 2025
AQI Category	Moderate	Poor	Poor

Wind Forecast for Delhi:					
	Wind speed (at surface) in km/h		Wind speed (at 900 m) in km/h	Wind Direction	
	As per IMD (range)	As per windy.com (at 16:00 hrs.)	As per windy.com (at 16:00hrs)	As per IMD	As per windy.com at 900m
Feb 21, 2025	04-10	09	12	VAR	NW
Feb 22, 2025	04-14	10	30	NW/NNW	NW
Feb 23, 2025	04-10	08	21	NW/NNW	NW

IMD Alert for Tomorrow (21.02.2025):

The air quality is likely to be in the Moderate category on 21.02.2025. The predominant surface wind is likely to be from the northeast direction with a wind speed less than 04 kmph during morning hours. The wind speed will gradually increase thereafter becoming 04-06 kmph from the east direction during the afternoon. It will increase further becoming less than 08 kmph from the north direction during evening and night on 21.02.2025. Ventilation index is likely to be 7300 m<sup>2</sup>/s.



Delhi Temperature (°C)*		
Date	Minimum	Maximum
17-02-2025	11.2	28.6
18-02-2025	13.2	29.0
19-02-2025	10.4	28.8
20-02-2025	15.0	28.4

\* Source – IMD (08:30 hrs.)

*Hotspots for Today				
City	Station Name	AQI value	Air Quality	Prominent Pollutant
Delhi	Wazirpur, Delhi - DPCC	227	Poor	PM <sub>10</sub>
	Jahangirpuri, Delhi - DPCC	214	Poor	PM <sub>10</sub>
	Burari Crossing, Delhi - IMD	212	Poor	PM <sub>2.5</sub>
	Alipur, Delhi - DPCC	210	Poor	PM <sub>2.5</sub>
	Narela, Delhi - DPCC	210	Poor	PM <sub>2.5</sub>
Faridabad	New Industrial Town, Faridabad - HSPCB	150	Moderate	Ozone
Gurugram	Teri Gram, Gurugram - HSPCB	175	Moderate	PM <sub>2.5</sub>
Ghaziabad	Vasundhara, Ghaziabad - UPPCB	191	Moderate	PM <sub>2.5</sub>
	Loni, Ghaziabad - UPPCB	147	Moderate	PM <sub>2.5</sub>
Greater Noida	Knowledge Park - V, Greater Noida - UPPCB	157	Moderate	PM <sub>10</sub>
Noida	Sector - 62, Noida - IMD	148	Moderate	PM <sub>10</sub>
	Sector-116, Noida - UPPCB	133	Moderate	PM <sub>10</sub>