



Central Pollution Control Board

Air Quality Status for Delhi & NCR

Dated – January 20, 2024



Current Air Quality Status:

Air Quality Index (AQI) (Average of past 24 hours at 4 PM) in comparison with last two years

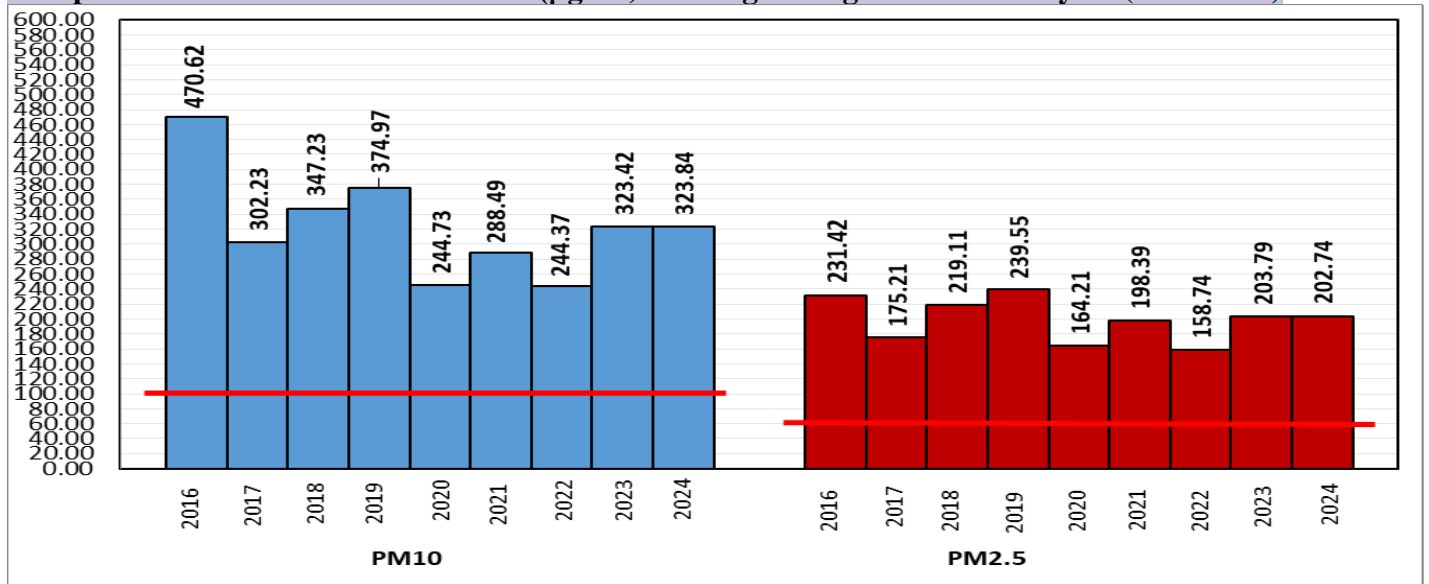
	2024			2023			2022		
	Air Quality	AQI Value	Prominent Pollutant	Air Quality	AQI Value	Prominent Pollutant	Air Quality	AQI Value	Prominent Pollutant
Delhi	Very Poor	329↓	PM2.5	Poor	226↓	PM2.5	Very Poor	387↑	PM10, PM2.5
Faridabad	Poor	233↓	PM2.5	Poor	300↓	PM2.5	Severe	412↑	PM10, PM2.5
Ghaziabad	Poor	245↓	PM2.5	Moderate	177↓	PM10	Very Poor	375↑	PM2.5
Greater Noida	Poor	214↑	PM2.5	Poor	247↓	PM10	Very Poor	320↑	PM2.5
Gurugram	Poor	253↑	PM2.5	Poor	206↓	PM2.5	Very Poor	324↓	PM2.5
Noida	Poor	221↓	PM2.5	Poor	202↓	PM2.5	Very Poor	357↑	PM10, PM2.5

*Data available for 36(2024), 36(2023), 32(2022) stations in Delhi today. # ↑, ↓ arrows indicate a decrease/increase as compared to the value on the previous day.

Comparative status of AQI - Delhi from 01 January to 20 January 2016-2024

Category	Year	2016	2017	2018	2019	2020	2021	2022	2023	2024	2016	2017	2018	2019	2020	2021	2022	2023	2024		
	No. of days	20	20	20	20	20	20	20	20	20	20	20	20	20	20	20	20	20	20	20	
Good (0-50)		0	0	0	0	0	0	0	0	0											
Satisfactory (51-100)		0	0	0	0	0	0	2	0	0	0	0	0	0	0	2	5	0	0		
Moderate (101-200)		0	0	0	0	0	2	3	0	0											
Poor (201-300)		2	6	3	4	12	6	4	5	1											
Very Poor (301-400)		15	14	14	9	6	6	10	13	18	20	20	20	20	20	18	15	20	20		
Severe (>401)		3	0	3	7	2	6	1	2	1											

Comparative status of PM₁₀ and PM_{2.5} (µg/m³) running average – Till January 19 (2016-2024)



*Red line shows the annual average concentration standards for PM₁₀ and PM_{2.5}.

Daily Average of Particulates in Delhi (24 hourly average value; from 06:00am of 19.01.24 to 06:00 am of 20.01.24)

Date ↓ / parameter →	PM _{2.5} (µg/m ³)	PM ₁₀ (µg/m ³)
19-January -2024	170↓	269↓

Hotspots for Today:

*Details given below

Delhi	Mundka, Bawana, Wazirpur, Rohini, Jahangirpuri	Ghaziabad	Sanjay Nagar, Loni
Faridabad	Sector- 16A	Greater Noida	Knowledge Park -V
Gurugram	Sector-51, Teri Gram	Noida	Sector-62, Sector-116

Forecast by IITM(Delhi):

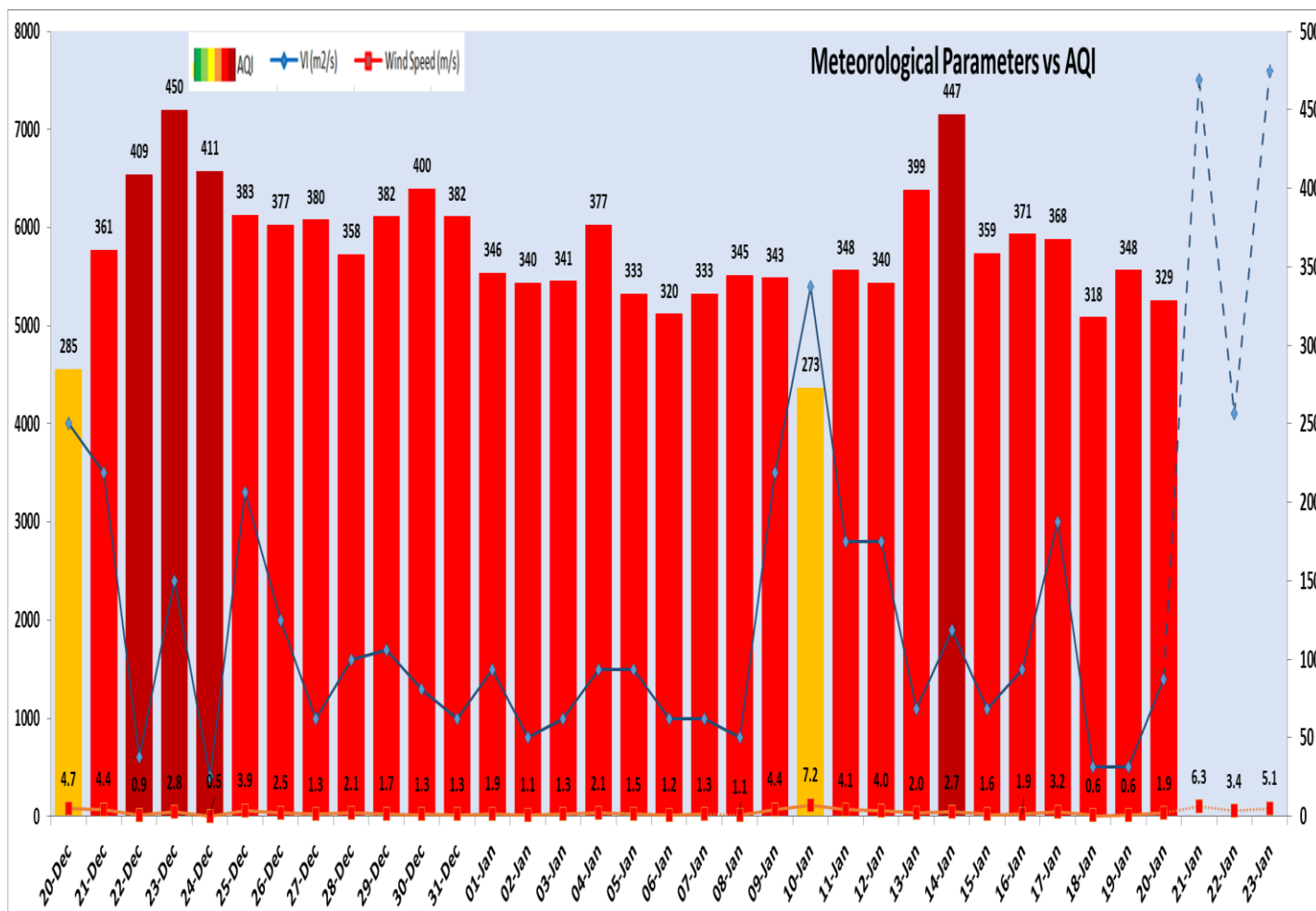
	Jan 21, 2024	Jan 22, 2024	Jan 23, 2024
AQI Category	Very Poor	Poor	Very Poor

Wind Forecast for Delhi:

	Wind speed (at surface) in km/h		Wind speed (at 900 m) in km/h	Wind Direction	
	As per IMD (range)	As per windy.com (at 16:00 hrs.)	As per windy.com (at 16:00hrs)	As per IMD	As per windy.com at 900m
Jan 21. 2024	06 TO 12	08	35	NW/W	NW
Jan 22. 2024	04 TO 08	03	12	VAR	W
Jan 23. 2024	04 TO 12	06	13	VAR	NW

IMD Alert for Tomorrow (21.01.2024):

The air quality is likely to be in Very Poor category on 20.01.2024 and 21.01.2024. The predominant surface wind is likely to be coming from Northwest/West directions in Delhi with wind speed 06-12 kmph with mainly clear sky with shallow fog in the morning on 21.01.2024. Ventilation index is likely to be 7500 m²/s.



Delhi Temperature in (°C)		
Date	Minimum	Maximum
17-01-2024	5.7	17.4
18-01-2024	6.6	18.2
19-01-2024	7.1	18.6
20-01-2024	8.5	14.2

▪ **Hotspots for Today**

City	Station Name	AQI value	Air Quality	Prominent Pollutant
Delhi	Mundka, Delhi - DPCC	373	Very Poor	PM _{2.5}
	Bawana, Delhi - DPCC	366	Very Poor	PM _{2.5}
	Wazirpur, Delhi - DPCC	365	Very Poor	PM _{2.5}
	Rohini, Delhi - DPCC	364	Very Poor	PM _{2.5}
	Jahangirpuri, Delhi - DPCC	356	Very Poor	PM _{2.5}
Faridabad	Sector- 16A, Faridabad - HSPCB	308	Very Poor	PM _{2.5}
Gurugram	Sector-51, Gurugram - HSPCB	346	Very Poor	PM _{2.5}
	Teri Gram, Gurugram - HSPCB	284	Poor	PM _{2.5}
Ghaziabad	Sanjay Nagar, Ghaziabad - UPPCB	299	Poor	PM _{2.5}
	Loni, Ghaziabad - UPPCB	261	Poor	PM _{2.5}
Greater Noida	Knowledge Park - V, Greater Noida - UPPCB	244	Poor	PM _{2.5}
Noida	Sector - 62, Noida - IMD	258	Poor	PM _{2.5}
	Sector-116, Noida - UPPCB	248	Poor	PM _{2.5}