



Central Pollution Control Board

Air Quality Status for Delhi & NCR

Dated – December 19, 2023



Current Air Quality Status:

Air Quality Index (AQI) (Average of past 24 hours at 4 PM) in comparison with last two years

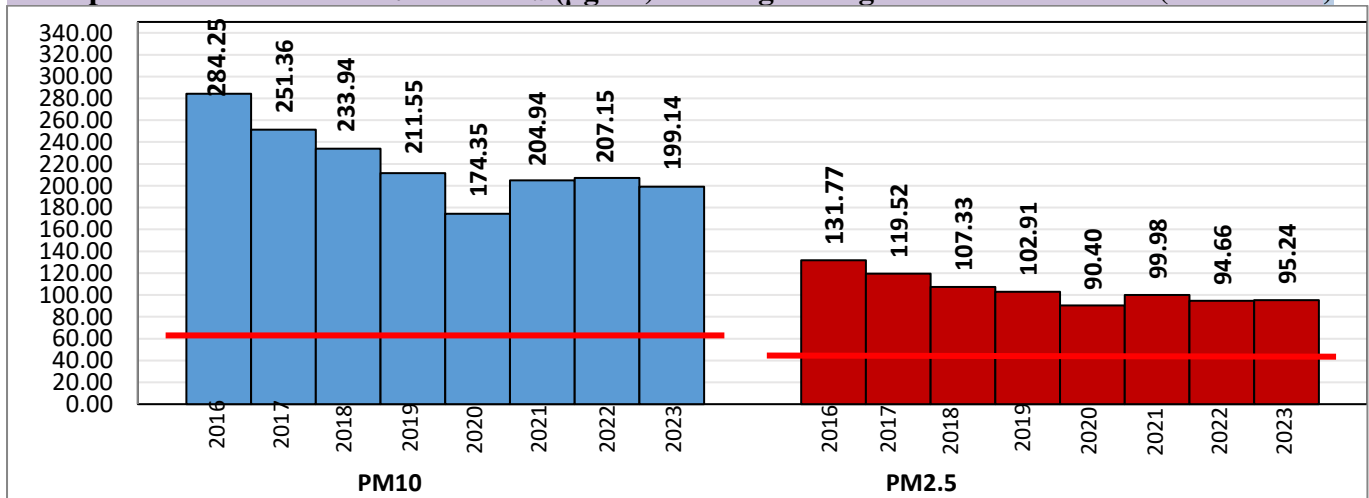
	2023			2022			2021(Covid- Year)		
	Air Quality	AQI Value	Prominent Pollutant	Air Quality	AQI Value	Prominent Pollutant	Air Quality	AQI Value	Prominent Pollutant
Delhi	Poor	286↓	PM2.5	Severe	410↑	PM2.5	Poor	271↓	PM2.5
Faridabad	Poor	206↓	PM2.5	Very Poor	388↑	PM10, PM2.5	Poor	226↓	PM2.5, PM10
Ghaziabad	Poor	204↓	PM2.5	Very Poor	373↑	PM2.5	Poor	228↓	PM2.5
Greater Noida	Poor	211↓	PM2.5	Severe	442↑	PM10, PM2.5	Moderate	160↓	PM2.5
Gurugram	Moderate	186↓	CO, PM2.5	Very Poor	383↑	PM2.5	Poor	207↓	PM2.5
Noida	Poor	206↓	PM2.5	Very Poor	377↑	PM10, PM2.5	Poor	203↓	PM2.5

*Data available for 37(2023), 34(2022), 35(2021) stations in Delhi today. # ↑, ↓ arrows indicate a decrease/increase as compared to the value on the previous day.

Comparative status of AQI - Delhi from 01 January to 19 December 2016-2023

Category	Year	2016	2017	2018	2019	2020	2021	2022	2023	2016	2017	2018	2019	2020	2021	2022	2023
	No. of days	342	353	353	353	354	353	353	353	110	152	158	181	227	197	163	206
Good (0-50)		0	2	0	2	4	1	3	1								
Satisfactory (51-100)		24	45	53	59	96	72	65	60								
Moderate (101-200)		86	105	105	120	127	124	95	145								
Poor (201-300)		119	112	113	102	72	77	130	76								
Very Poor (301-400)		88	81	66	50	43	61	54	59	232	201	195	172	127	156	190	147
Severe (>401)		25	8	16	20	12	18	6	12								

Comparative status of PM₁₀ and PM_{2.5} (µg/m³) running average - Till December 18 (2016- 2023)



*Red line shows the annual average concentration standards for PM₁₀ and PM_{2.5}.

Daily Average of Particulates in Delhi (24 hourly average value; from 06:00am of 18.12.23 to 06:00 am of 19.12.23)

Date ↓ / parameter →	PM _{2.5} (µg/m ³)	PM ₁₀ (µg/m ³)
18- December -2023	142↓	236↓

Hotspots for Today: *Details given below

Delhi	Nehru Nagar, Jahangirpuri, NSIT Dwarka, Mundka, Bawana	Ghaziabad	Sanjay Nagar, Loni
Faridabad	New Industrial Town, Sector 16A	Greater Noida	Knowledge Park -V
Gurugram	Teri Gram, NISE Gwal Pahari	Noida	Sector-62, Sector - 116, Sector-1

Forecast by IITM (Delhi):

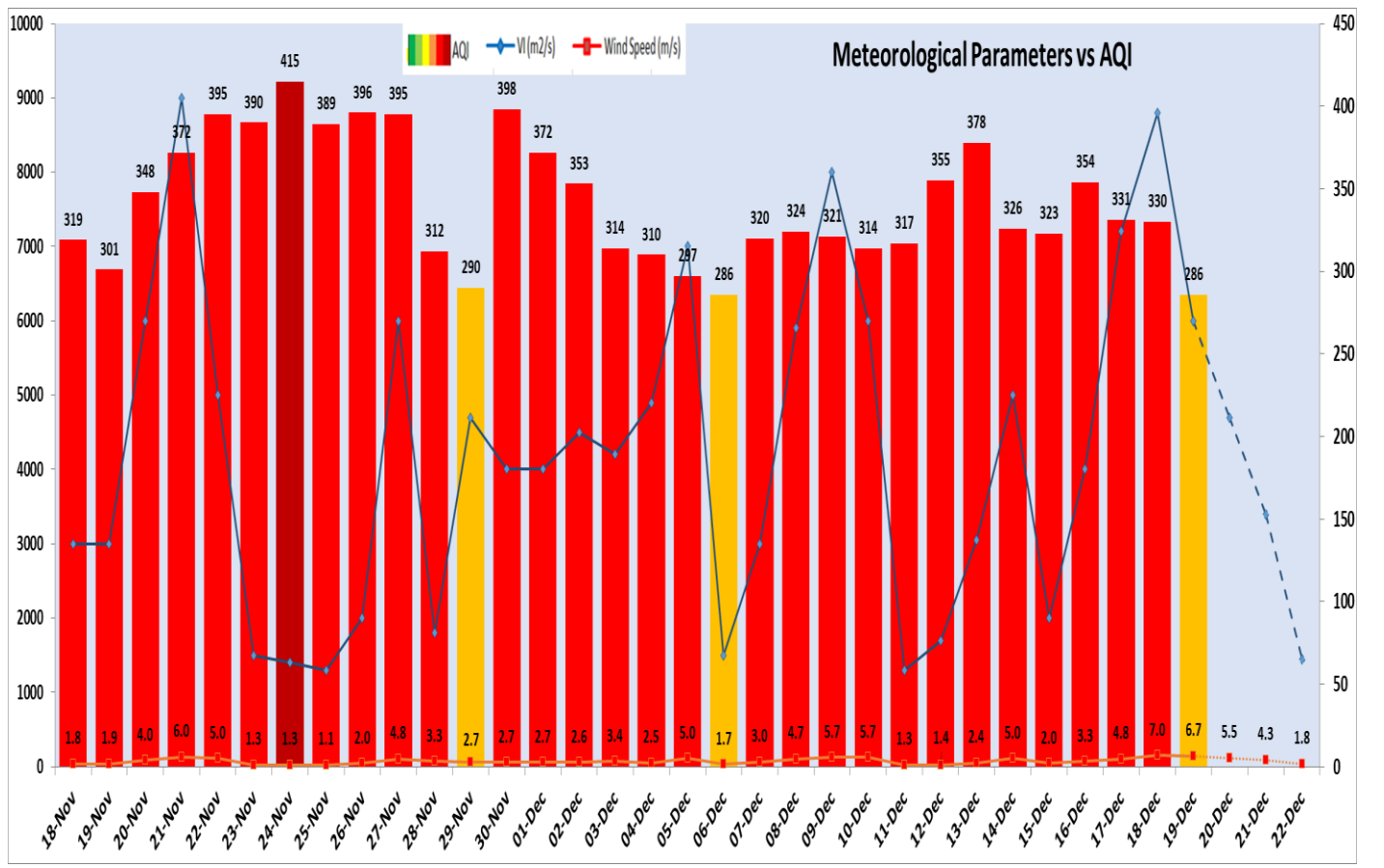
	Dec 20, 2023	Dec 21, 2023	Dec 22, 2023
AQI Category	Very Poor	Very Poor	Very Poor

Wind Forecast for Delhi:

	Wind speed (at surface) in km/h		Wind speed (at 900 m) in km/h	Wind Direction	
	As per IMD (range)	As per windy.com (at 16:00 hrs.)	As per windy.com (at 16:00hrs)	As per IMD	As per windy.com at 900m
Dec 20. 2023	10 TO 06	9	33	NW	NW
Dec 21. 2023	04 TO 08	9	38	NW	NW
Dec 22. 2023	04 TO 06	6	22	SW/NE	N

IMD Alert for Tomorrow (20.12.2023):

The air quality is likely to remain in Very Poor category from 20.12.2023 to 21.12.2023. The predominant surface wind is likely to be coming from Northwest direction in Delhi with wind speed 10-06 kmph, partly cloudy sky and mist in the morning on 20.12.2023. Ventilation index is likely to be 4700 m²/s.



Delhi Temperature in (°C)		
Date	Minimum	Maximum
16-12-2023	5.5	25.4
17-12-2023	6.5	24.7
18-12-2023	7.1	24.7
19-12-2023	7.8	22.3

▪ **Hotspots for Today**

City	Station Name	AQI value	Air Quality	Prominent Pollutant
Delhi	Nehru Nagar, Delhi - DPCC	346	Very Poor	PM _{2.5}
	Jahangirpuri, Delhi - DPCC	326	Very Poor	PM _{2.5}
	NSIT Dwarka, Delhi - CPCB	318	Very Poor	PM _{2.5}
	Mundka, Delhi - DPCC	315	Very Poor	PM _{2.5}
	Bawana, Delhi - DPCC	311	Very Poor	PM _{2.5}
Faridabad	New Industrial Town, Faridabad - HSPCB	296	Poor	PM _{2.5}
	Sector- 16A, Faridabad - HSPCB	241	Poor	PM _{2.5}
Gurugram	Teri Gram, Gurugram - HSPCB	254	Poor	PM _{2.5}
	NISE Gwal Pahari, Gurugram - IMD	201	Poor	PM _{2.5}
Ghaziabad	Sanjay Nagar, Ghaziabad - UPPCB	247	Poor	PM _{2.5}
	Loni, Ghaziabad - UPPCB	221	Poor	PM _{2.5}
Greater Noida	Knowledge Park - V, Greater Noida - UPPCB	241	Poor	PM _{2.5}
Noida	Sector - 62, Noida - IMD	235	Poor	PM _{2.5}
	Sector-116, Noida - UPPCB	227	Poor	PM _{2.5}
	Sector-1, Noida - UPPCB	206	Poor	PM _{2.5}