



Central Pollution Control Board

Air Quality Status for Delhi & NCR

Dated – December 19, 2022



Current Air Quality Status:

Air Quality Index (AQI) (Average of past 24 hours)

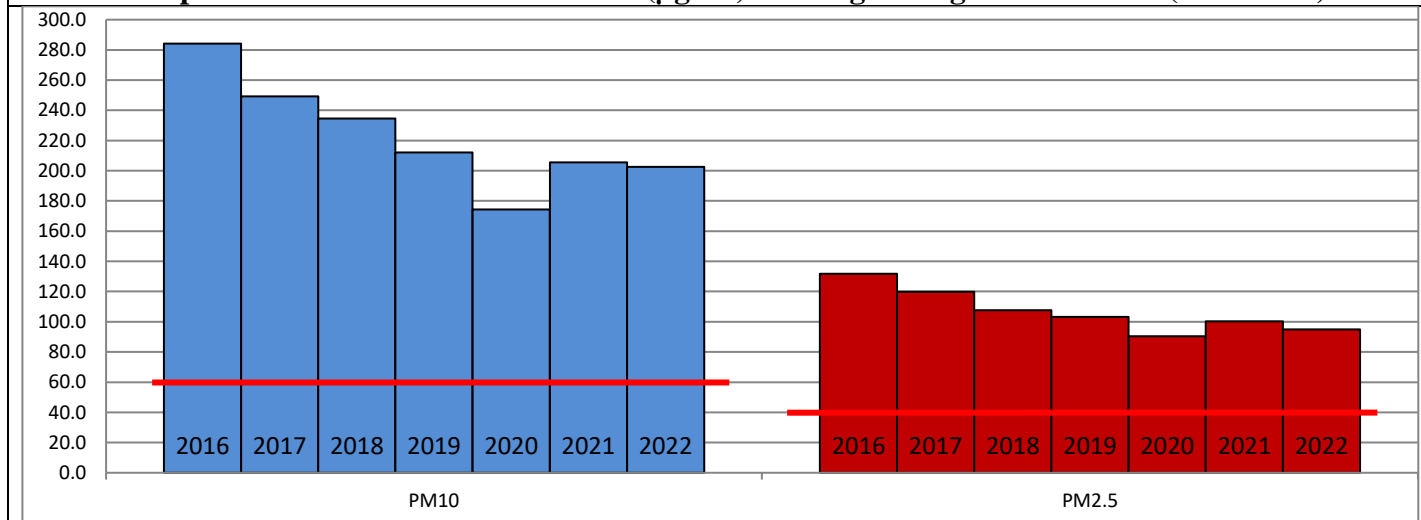
	Air Quality	AQI Value	Prominent Pollutant
Delhi	Severe	410 ↑	PM _{2.5}
Faridabad	Very Poor	388 ↑	PM ₁₀ , PM _{2.5}
Ghaziabad	Very Poor	373 ↑	PM _{2.5}
Greater Noida	Severe	442 ↑	PM ₁₀ , PM _{2.5}
Gurugram	Very Poor	383 ↑	PM _{2.5}
Noida	Very Poor	377 ↑	PM ₁₀ , PM _{2.5}

*Data available for 34 stations in Delhi today. # ↑ ↓ arrows indicate a decrease/increase as compared to the value on the previous day.

Comparative status of AQI - Delhi from 01 January to 19 December 2016-2022

Category	Year	2016	2017	2018	2019	2020	2021	2022	2016	2017	2018	2019	2020	2021	2022
	No. of days	342	353	353	353	354	353	353							
Good (0–50)		0	2	0	2	5	1	3							
Satisfactory (51–100)		24	45	53	59	95	81	65	110	152	159	182	227	197	163
Moderate (101–200)		86	105	106	121	127	115	95							
Poor (201–300)		119	114	114	103	72	77	130							
Very Poor (301–400)		91	79	66	49	43	61	54	232	201	194	171	127	156	190
Severe (>401)		22	8	14	19	12	18	6							

Comparative status of PM₁₀ and PM_{2.5} (µg/m³) running average – Till Dec 18 (2016-2022)



Hotspots for Today:

*Details given overleaf

Delhi	Nehru Nagar, Patparganj, Jahangirpuri, Anand Vihar, Vivek Vihar	Ghaziabad	Loni
Faridabad	New Industrial Town, Sector-16A	Greater Noida	Knowledge Park -V
Gurugram	Teri Gram	Noida	Sector-1, Sector-116

Forecast by IITM (Delhi):

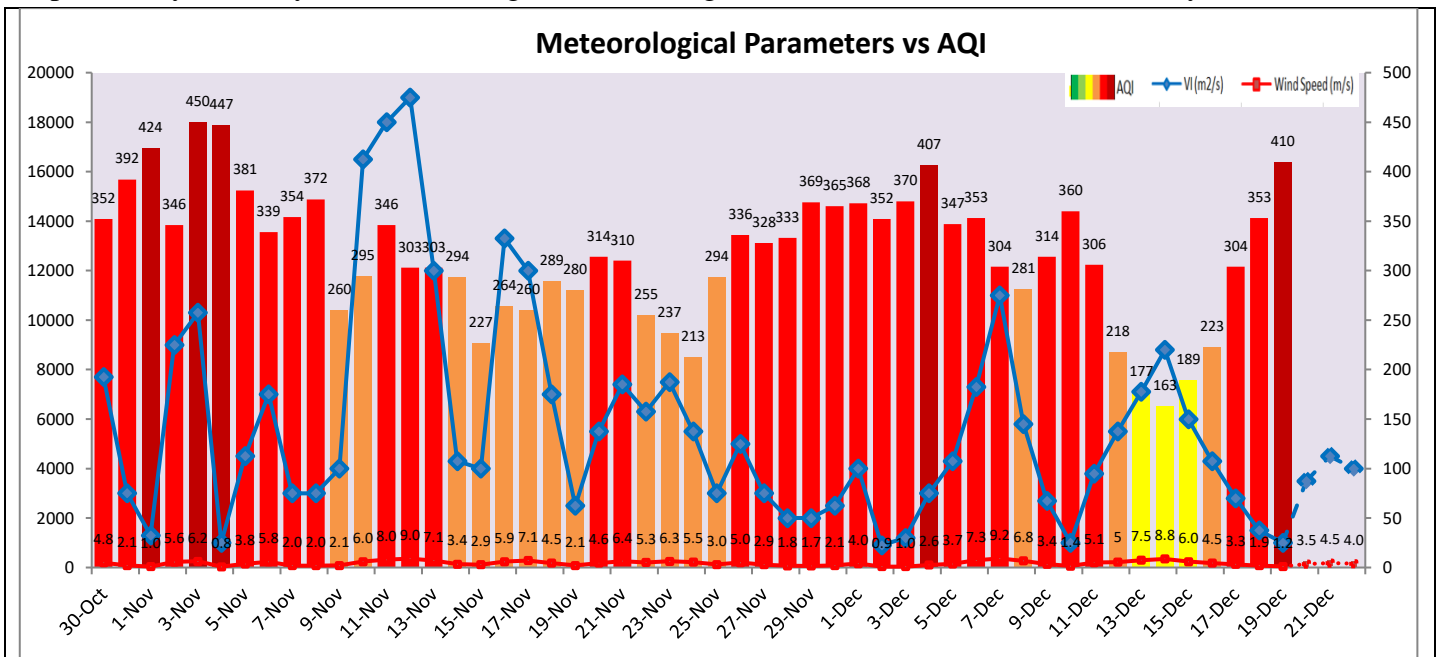
	Dec 20, 2022		Dec 21, 2022- Dec 22, 2022	
	Concentration	AQI Category	Concentration	AQI Category
PM ₁₀	381	Very Poor	388	Very Poor
PM _{2.5}	244	Very Poor	248	Very Poor

Wind Forecast for Delhi:

	Wind speed (at surface) in km/h		Wind speed (at 900 m) in km/h	Wind Direction	
	As per IMD (range)	As per windy.com (at 16:00 hrs.)	As per windy.com (at 16:00hrs)	As per IMD	As per windy.com at 900m
Dec 20, 2022	04-12	07	20	NW	NW
Dec 21, 2022	08-16	10	15	NW	NW
Dec 22, 2022	06-08	10	17	NW	NW

IMD Alert for Tomorrow (20.12.2022):

The air quality is likely to improve but remain in Very Poor category on 20.12.2022 and 21.12.2022. The predominant surface wind is likely to be coming from Northwest direction in Delhi with wind speed 04-12 kmph, mainly clear sky and shallow fog in the morning tomorrow. Ventilation index is likely to be 3,500 m²/s.



Hotspots for Today

City	Station Name	AQI value	Air Quality	Prominent Pollutant
Delhi	Nehru Nagar, Delhi - DPCC	458	Severe	PM _{2.5}
	Patparganj, Delhi - DPCC	457	Severe	PM _{2.5}
	Jahangirpuri, Delhi - DPCC	456	Severe	PM _{2.5}
	Anand Vihar, Delhi - DPCC	452	Severe	PM _{2.5}
	Vivek Vihar, Delhi - DPCC	452	Severe	PM _{2.5}
Faridabad	New Industrial Town, Faridabad - HSPCB	430	Severe	PM ₁₀
	Sector- 16A, Faridabad - HSPCB	418	Severe	PM _{2.5}
Gurugram	Teri Gram, Gurugram - HSPCB	416	Severe	PM _{2.5}
Ghaziabad	Loni, Ghaziabad - UPPCB	379	Very Poor	PM _{2.5}
Greater Noida	Knowledge Park - V, Greater Noida - UPPCB	450	Severe	PM ₁₀
Noida	Sector-116, Noida - UPPCB	455	Severe	PM _{2.5}
	Sector-1, Noida - UPPCB	390	Very Poor	PM _{2.5}