



Central Pollution Control Board

Air Quality Status for Delhi & NCR

Dated – November 19, 2022



Current Air Quality Status:

Air Quality Index (AQI) (Average of past 24 hours)

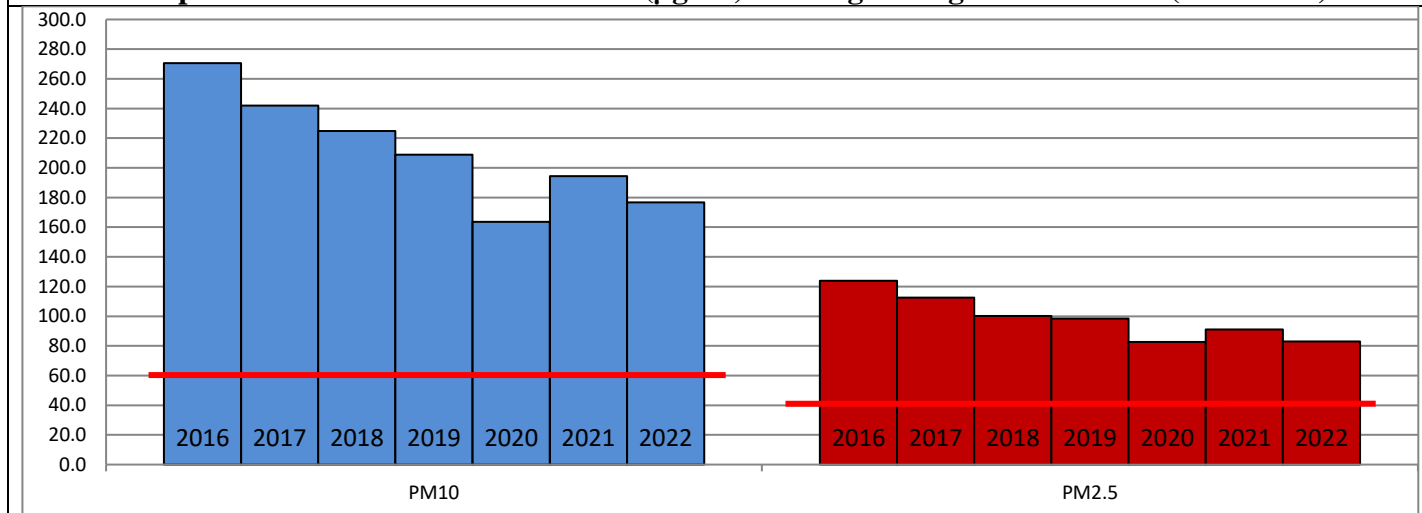
	Air Quality	AQI Value	Prominent Pollutant
Delhi	Poor	280 ↓	PM ₁₀ , PM _{2.5}
Faridabad	Poor	252 ↓	PM _{2.5}
Ghaziabad	Poor	263 ↑	PM ₁₀
Greater Noida	Poor	280 ↑	PM ₁₀
Gurugram	Poor	247 ↓	PM _{2.5}
Noida	Poor	235 ↓	PM _{2.5}

*Data available for 35 stations in Delhi today. # ↓ ↑ arrows indicate a decrease/increase as compared to the value on the previous day.

Comparative status of AQI - Delhi from 01 January to 19 November 2016-2022

Category	Year	2016	2017	2018	2019	2020	2021	2022	2016	2017	2018	2019	2020	2021	2022
	No. of days	312	323	323	323	324	323	323							
Good (0–50)		0	2	0	2	5	1	3							
Satisfactory (51–100)		24	45	53	58	95	81	65	110	150	158	175	225	197	160
Moderate (101–200)		86	103	105	115	125	115	92							
Poor (201–300)		116	104	107	93	59	69	123							
Very Poor (301–400)		68	61	46	39	30	43	36	202	173	165	148	99	126	163
Severe (>401)		18	8	12	16	10	14	4							

Comparative status of PM₁₀ and PM_{2.5} (µg/m³) running average – Till Nov 17 (2016-2022)



Hotspots for Today:

*Details given overleaf

Delhi	NSIT Dwarka, Anand Vihar, Jahangirpuri, Burari Crossing, Alipur	Ghaziabad	Vasundhara
Faridabad	Sector- 11, Sector-16A	Greater Noida	Knowledge Park-V
Gurugram	Sector-51, Vikas Sadan	Noida	Sector – 62, Sector-116

Forecast by IITM (Delhi):

	Nov 20, 2022		Nov 21, 2022- Nov 22, 2022	
	Concentration	AQI Category	Concentration	AQI Category
PM ₁₀	204	Moderate	217	Moderate
PM _{2.5}	130	Very Poor	135	Very Poor

Wind Forecast for Delhi:

	Wind speed (at surface) in km/h		Wind speed (at 900 m) in km/h	Wind Direction	
	As per IMD (range)	As per windy.com (at 16:00 hrs.)	As per windy.com (at 16:00hrs)	As per IMD	As per windy.com at 900m
Nov 20, 2022	06-12	08	26	NW	NW
Nov 21, 2022	12	09	28	NW	NW
Nov 22, 2022	12	09	28	NW	NW

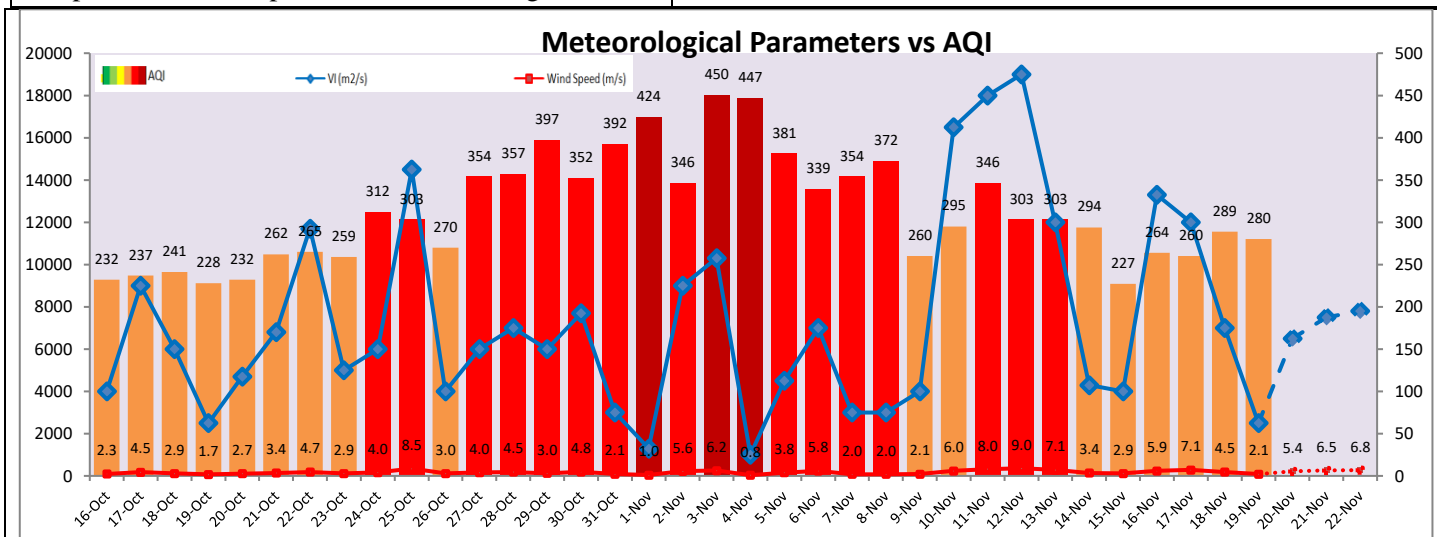
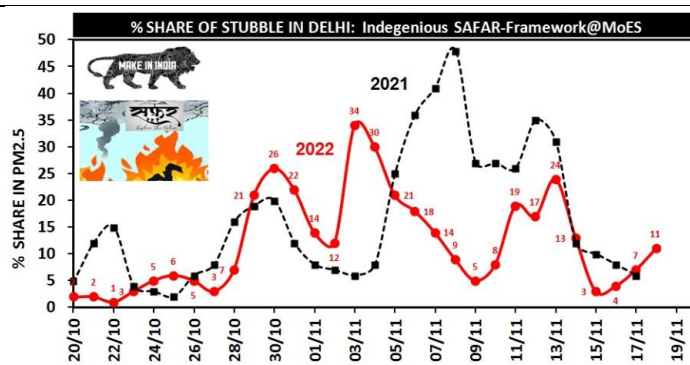
IMD Alert for Tomorrow (20.11.2022):

The overall air quality over Delhi is likely to remain in lower end of Very Poor category on 20.11.2022. The predominant surface wind is likely to be coming from Northwest direction in Delhi with wind speed 06-12 kmph, mainly clear sky and mist in the morning tomorrow. Ventilation index is likely to be 6,500 m²/s.

Active Fire Events (AFE):

Date	Punjab		Haryana	
	Nos. on the day	Total since September 15	Nos. on the day	Total since September 15
19.11.2022	426	48915	79	3459
19.11.2021	448	70573	132	6337

* As per IITM, the impact of stubble burning is ~11%.



Hotspots for Today

City	Station Name	AQI value	Air Quality	Prominent Pollutant
Delhi	Anand Vihar, Delhi - DPCC	364	Very Poor	PM ₁₀
	Jahangirpuri, Delhi - DPCC	330	Very Poor	PM ₁₀
	NSIT Dwarka, Delhi - CPCB	322	Very Poor	PM ₁₀
	Burari Crossing, Delhi - IMD	320	Very Poor	PM _{2.5}
	Alipur, Delhi - DPCC	312	Very Poor	PM _{2.5}
Faridabad	Sector 11, Faridabad - HSPCB	288	Poor	PM _{2.5}
	Sector- 16A, Faridabad - HSPCB	266	Poor	PM _{2.5}
Gurugram	Sector-51, Gurugram - HSPCB	302	Very Poor	PM _{2.5}
	Vikas Sadan, Gurugram - HSPCB	274	Poor	PM _{2.5}
Ghaziabad	Vasundhara, Ghaziabad - UPPCB	299	Poor	PM ₁₀
Greater Noida	Knowledge Park - V, Greater Noida - UPPCB	286	Poor	PM ₁₀
Noida	Sector - 62, Noida - IMD	291	Poor	PM _{2.5}
	Sector-116, Noida - UPPCB	245	Poor	PM _{2.5}