



# Central Pollution Control Board

## Air Quality Status for Delhi & NCR

Dated – October 19, 2022



### Current Air Quality Status:

#### Air Quality Index (AQI) (Average of past 24 hours)

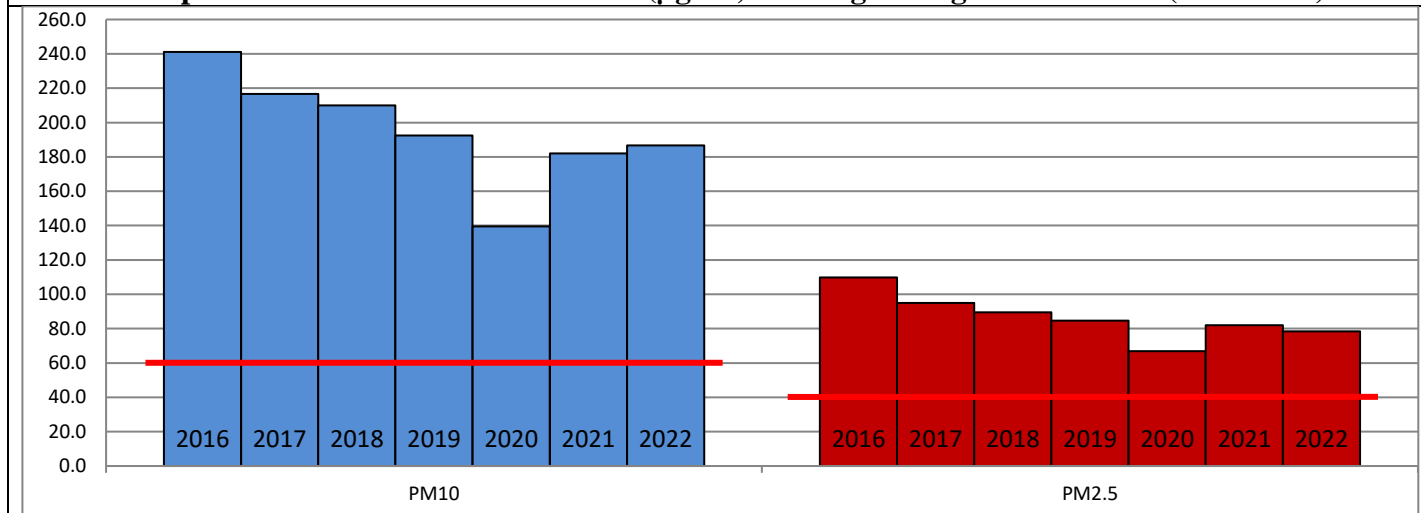
	Air Quality	AQI Value	Prominent Pollutant
Delhi	Poor	228 ↓	PM <sub>10</sub> , PM <sub>2.5</sub>
Faridabad	Very Poor	304 ↑	PM <sub>10</sub> , O <sub>3</sub>
Ghaziabad	Poor	276 ↑	PM <sub>10</sub>
Greater Noida	Poor	237 ↑	PM <sub>10</sub>
Gurugram	Moderate	186 ↓	PM <sub>2.5</sub> , PM <sub>10</sub>
Noida	Poor	269 ↑	PM <sub>10</sub> , PM <sub>2.5</sub>

\*Data available for 29 stations in Delhi today. # ↓ ↑ arrows indicate a decrease/increase as compared to the value on the previous day.

#### Comparative status of AQI - Delhi from 01 January to 19 October 2016-2022

Category	Year	2016	2017	2018	2019	2020	2021	2022	2016	2017	2018	2019	2020	2021	2022
	No. of days	281	292	292	292	293	292	292							
Good (0-50)		0	2	0	2	5	1	3							
Satisfactory (51-100)		24	45	53	58	95	80	65	110	150	157	175	224	191	160
Moderate (101-200)		86	103	104	115	124	110	92							
Poor (201-300)		111	102	100	82	51	62	110							
Very Poor (301-400)		54	40	29	28	16	33	21	171	142	135	117	69	101	132
Severe (>401)		6	0	6	7	2	6	1							

#### Comparative status of PM<sub>10</sub> and PM<sub>2.5</sub> (µg/m<sup>3</sup>) running average – Till Oct 18 (2016-2022)



#### Hotspots for Today:

\*Details given overleaf

Delhi	Shadipur, Bawana, Wazirpur, NSIT Dwarka, Narela	Ghaziabad	Loni
Faridabad	New Industrial Town, Sector-11	Greater Noida	Knowledge Park-V
Gurugram	Sector-51	Noida	Sector-116, Sector-125

#### Forecast by IITM (Delhi):

	Oct 20, 2022		Oct 21, 2022- Oct 22, 2022	
	Concentration	AQI Category	Concentration	AQI Category
PM <sub>10</sub>	231	Moderate	273	Poor
PM <sub>2.5</sub>	96	Poor	114	Poor

### Wind Forecast for Delhi:

	Wind speed (at surface) in km/h		Wind speed (at 900 m) in km/h	Wind Direction	
	As per IMD (range)	As per windy.com (at 16:00 hrs.)	As per windy.com (at 16:00hrs)	As per IMD	As per windy.com at 900m
Oct 20, 2022	05-08	05	07	SE	SW
Oct 21, 2022	06-18	02	21	SE/NW	W
Oct 22, 2022	05-10	09	18	N/NE	NW

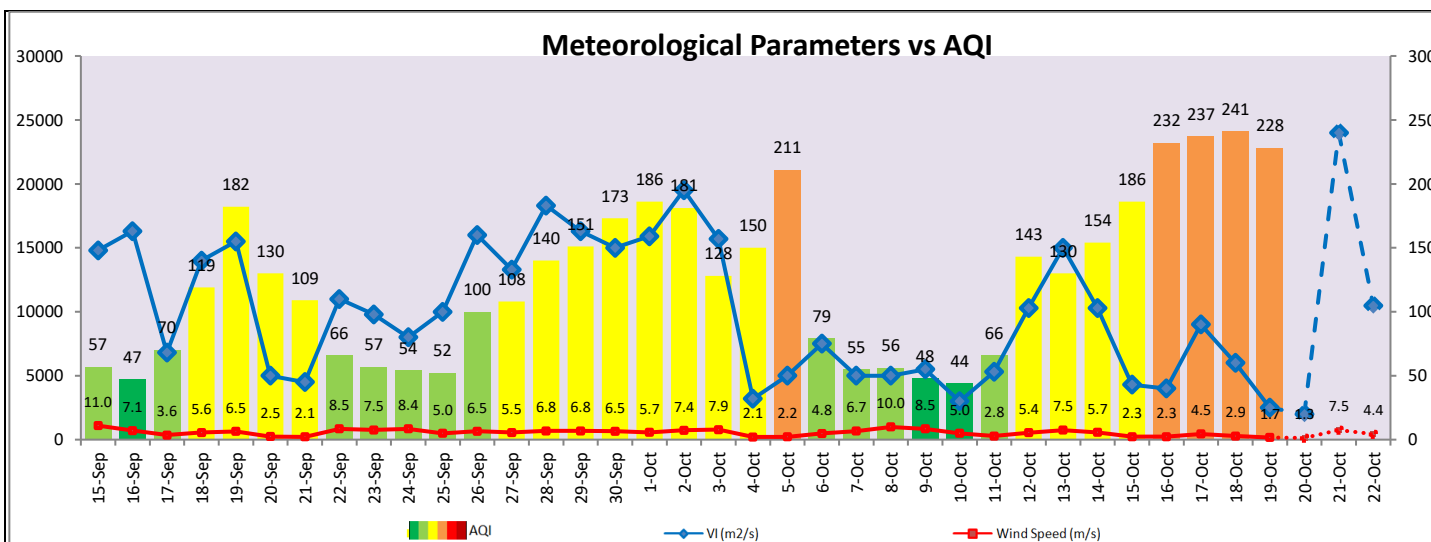
### IMD Alert for Tomorrow (20.10.2022):

The overall air quality over Delhi is likely to remain in Poor category on 20.10.2022 and 21.10.2022.. The predominant surface wind is likely to be coming from Southeast direction in Delhi with wind speed 05-08 kmph and mainly clear sky tomorrow. Ventilation index is likely to be 2,000 m<sup>2</sup>/s.

### Active Fire Events (AFEs):

Date	Punjab		Haryana	
	Nos. on the day	Total since September 15	Nos. on the day	Total since September 15
18.10.2022	342	2189	134	464
18.10.2021	57	2446	1	1027

\* As per IITM, the impact of stubble burning is negligible.



### Hotspots for Today

City	Station Name	AQI value	Air Quality	Prominent Pollutant
Delhi	Shadipur, Delhi - CPCB	340	Very Poor	PM <sub>2.5</sub>
	Bawana, Delhi - DPCC	331	Very Poor	PM <sub>10</sub>
	Wazirpur, Delhi - DPCC	321	Very Poor	PM <sub>10</sub>
	NSIT Dwarka, Delhi - CPCB	315	Very Poor	PM <sub>2.5</sub>
	Narela, Delhi - DPCC	314	Very Poor	PM <sub>10</sub>
Faridabad	New Industrial Town, Faridabad - HSPCB	351	Very Poor	PM <sub>10</sub>
	Sector 11, Faridabad - HSPCB	330	Very Poor	PM <sub>10</sub>
Gurugram	Sector-51, Gurugram - HSPCB	295	Poor	PM <sub>2.5</sub>
Ghaziabad	Loni, Ghaziabad - UPPCB	364	Very Poor	PM <sub>10</sub>
Greater Noida	Knowledge Park - V, Greater Noida - UPPCB	248	Poor	PM <sub>10</sub>
Noida	Sector-116, Noida - UPPCB	330	Very Poor	PM <sub>2.5</sub>
	Sector - 125, Noida - UPPCB	287	Poor	PM <sub>10</sub>