



# Central Pollution Control Board

## Air Quality Status for Delhi & NCR

Dated – May 19, 2022



### Current Air Quality Status:

#### Air Quality Index (AQI) (Average of past 24 hours)

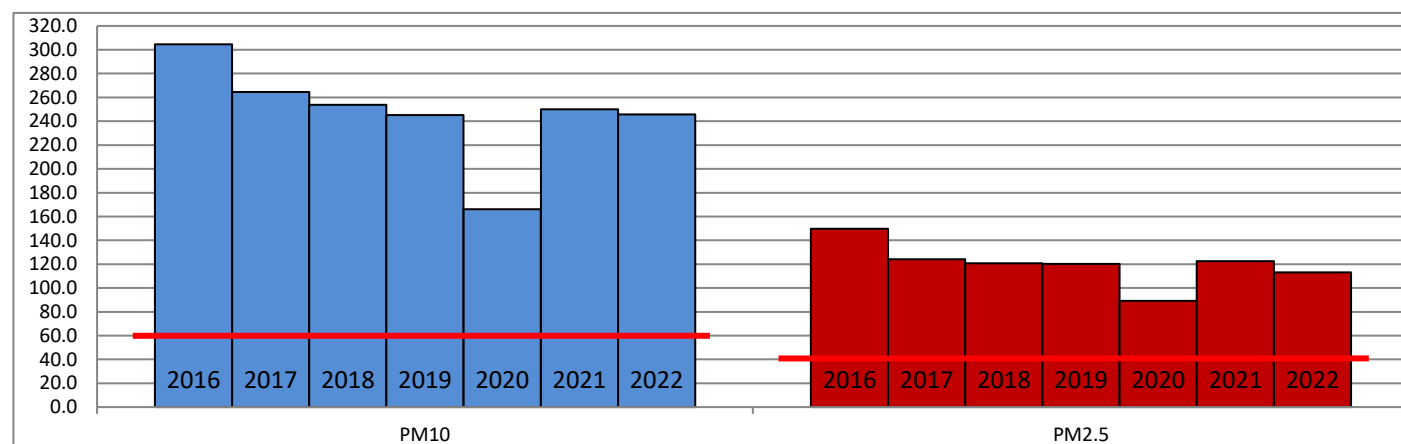
	Air Quality	AQI Value	Prominent Pollutant
Delhi	Poor	202↓	PM <sub>2.5</sub> , PM <sub>10</sub> , O <sub>3</sub>
Faridabad	Poor	248↓	PM <sub>2.5</sub> , PM <sub>10</sub>
Ghaziabad	Poor	187↓	PM <sub>10</sub> , O <sub>3</sub>
Greater Noida	Poor	254↓	PM <sub>10</sub> , O <sub>3</sub>
Gurugram	Poor	156↓	PM <sub>2.5</sub> , PM <sub>10</sub>
Noida	Poor	203↓	PM <sub>10</sub>

\*Data available for 38 stations in Delhi today. # ↓ ↑ arrows indicate increase/decrease as compared to value on the previous day

#### Comparative status of AQI - Delhi from 01 January to 19 May 2016-2022

Category	Year	2016	2017	2018	2019	2020	2021	2022	2016	2017	2018	2019	2020	2021	2022
	No. of days	136	139	139	139	140	139	139							
Good (0–50)		0	0	0	0	1	0	0							
Satisfactory (51–100)		0	0	1	2	27	2	3	11	32	42	51	86	48	33
Moderate (101–200)		11	32	41	49	58	46	30							
Poor (201–300)		70	72	68	55	37	53	87							
Very Poor (301–400)		49	35	26	26	15	32	18	125	107	97	88	54	91	106
Severe (>401)		6	0	3	7	2	6	1							

#### Comparative status of PM<sub>2.5</sub> and PM<sub>10</sub> (µg/m<sup>3</sup>) running average – Till May 18 (2016-2022)



#### Hotspots for Today:

\*Details given overleaf

Delhi	DTU, Narela, NSIT Dwarka, Bawana, Chandni Chowk	Gurugram	Sector-51, Teri Gram
Faridabad	Sector-11, Sector-30	Greater Noida	Knowledge Park - III
Ghaziabad	Loni, Sanjay Nagar	Noida	Sector -62, Sector-116

#### Forecast by IITM:

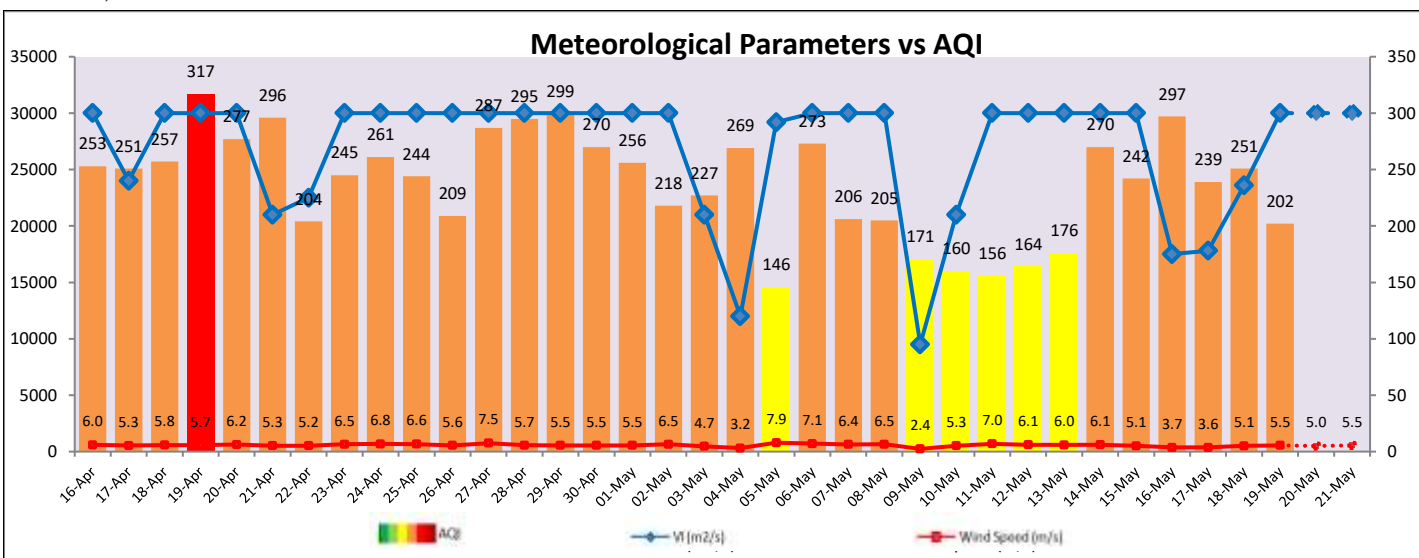
Parameters	May 20, 2022		May 21, 2022- May 22, 2022	
	Concentration	AQI Category	Concentration	AQI Category
PM <sub>10</sub>	259	Poor	306	Poor
PM <sub>2.5</sub>	81	Moderate	96	Poor

## Wind Forecast for Delhi:

	Wind speed (at surface) in km/h		Wind speed (at 900 m) in km/h	Wind Direction	
	As per IMD (at 17:30 hrs.)	As per windy.com (at 16:00 hrs.)	As per windy.com (at 16:00hrs)	As per IMD (at 17:30hrs.)	As per windy.com at 900m
May 20, 2022	30	11	15	W	NW
May 21, 2022	16	08	07	WSW	NE
May 22, 2022	16	21	27	E	NE

### IMD Alert for Tomorrow (20.05.2022):

The air quality over Delhi-NCT is likely to remain in Poor category on 20.05.2022. The predominant surface wind is likely to be coming from West direction in Delhi on 20.05.2022 with wind speed approx. 30 kmph, partly cloudy sky, possibility of thundery development towards evening/night and strong surface winds (speed 20-30 kmph) during the day tomorrow. **Long range transported dust will also impact air quality over parts of Rajasthan, Gujarat, and NCR during next two days.** The ventilation index is likely to be more than 30,000 m<sup>2</sup>/s tomorrow.



### Hotspots for Today

City	Station Name	AQI value	Air Quality	Prominent Pollutant
Delhi	Narela, Delhi - DPCC	288	Poor	PM <sub>10</sub>
	DTU, Delhi - CPCB	263	Poor	PM <sub>2.5</sub>
	Bawana, Delhi - DPCC	260	Poor	PM <sub>10</sub>
	NSIT Dwarka, Delhi - CPCB	239	Poor	PM <sub>10</sub>
	Chandni Chowk, Delhi - IITM	232	Poor	PM <sub>2.5</sub>
Faridabad	Sector 11, Faridabad - HSPCB	303	Very Poor	PM <sub>2.5</sub>
	Sector 30, Faridabad - HSPCB	232	Poor	PM <sub>10</sub>
Gurugram	Sector-51, Gurugram - HSPCB	210	Poor	PM <sub>2.5</sub>
	Teri Gram, Gurugram - HSPCB	191	Moderate	PM <sub>10</sub>
Ghaziabad	Loni, Ghaziabad - UPPCB	240	Poor	O <sub>3</sub>
	Sanjay Nagar, Ghaziabad - UPPCB	164	Moderate	PM <sub>10</sub>
Greater Noida	Knowledge Park - III, Greater Noida - UPPCB	275	Poor	O <sub>3</sub>
Noida	Sector-116, Noida - UPPCB	219	Poor	PM <sub>10</sub>
	Sector - 62, Noida - IMD	196	Moderate	PM <sub>10</sub>