



Central Pollution Control Board

Air Quality Status for Delhi &NCR

Dated – March 19, 2022



Current Air Quality Status:

■ Air Quality Index (AQI) (Average of past 24 hours)

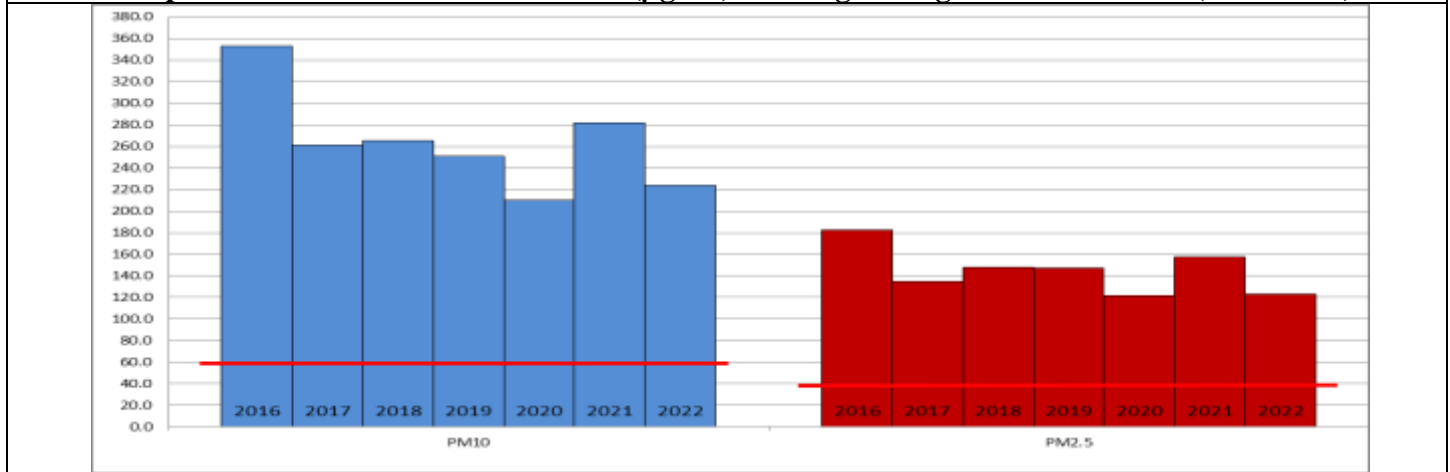
	Air Quality	AQI Value	Prominent Pollutant
Delhi	Poor	231↓	PM _{2.5}
Faridabad	Poor	234↓	PM _{2.5}
Ghaziabad	Poor	273↓	PM _{2.5}
Greater Noida	Moderate	177↓	PM _{2.5}
Gurugram	Poor	236↓	PM _{2.5}
Noida	Moderate	193↓	PM _{2.5}

*Data available for 37 stations in Delhi today. # ↓ ↑ arrows indicate increase/decrease as compared to value on the previous day

■ Comparative status of AQI - Delhi from 01 January to 19 March 2016-2022

Category	Year	2016	2017	2018	2019	2020	2021	2022	2016	2017	2018	2019	2020	2021	2022
		No. of days	75	78	78	78	79	78	78						
Good (0–50)		0	0	0	0	0	0	0							
Satisfactory (51–100)		0	0	0	1	5	0	3	5	13	18	25	27	8	25
Moderate (101–200)		5	13	18	24	22	8	22							
Poor (201–300)		23	41	36	25	35	33	35							
Very Poor (301–400)		41	24	21	21	15	31	17	70	65	60	53	52	70	53
Severe (>401)		6	0	3	7	2	6	1							

Comparative status of PM_{2.5} and PM₁₀ (µg/m³) running average – Till March 16 (2016-2022)



■ Hotspots for Today:

*Details given overleaf

Delhi	Bawana, Pusa, CRRI Mathura Road, Jahangirpuri, ITO,	Gurugram	Sector-51
Faridabad	Sector-16A, Sector-11	Greater Noida	Knowledge Park - V
Ghaziabad	Loni, Sanjay Nagar	Noida	Sector - 116

■ Forecast by IITM:

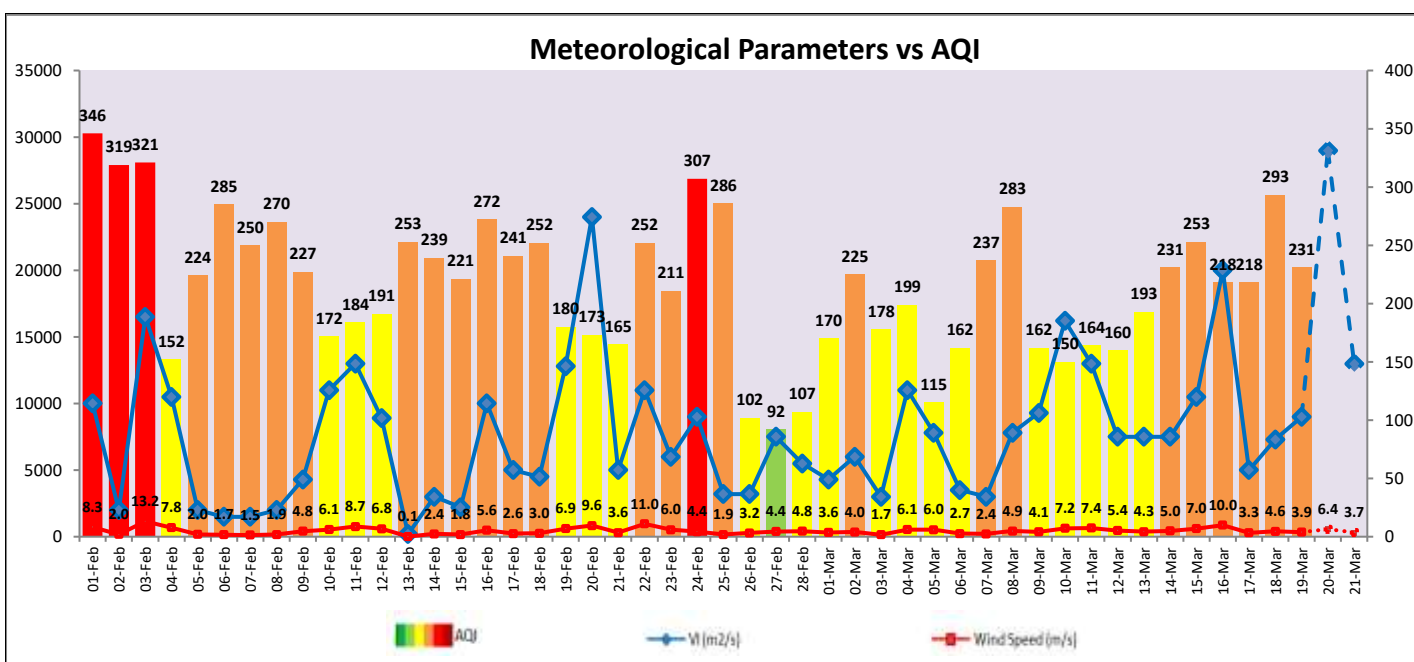
Parameters	March 20, 2022		March 21, 2022- March 22, 2022	
	Concentration	AQI Category	Concentration	AQI Category
PM ₁₀	199	Moderate	163	Moderate
PM _{2.5}	112	Poor	91	Poor

Wind Forecast for Delhi:

	Wind speed (at surface) in km/h		Wind speed (at 900 m) in km/h	Wind Direction	
	As per IMD (at 17:30 hrs.)	As per windy.com (at 16:00 hrs.)	As per windy.com (at 16:00hrs)	As per IMD (at 17:30hrs.)	As per windy.com at 900m
March 20, 2022	04	09	16	SW	NW
March 21, 2022	06	12	29	NW	NW
March 22, 2022	18	13	37	NW	NW

IMD Alert for Tomorrow (20.03.2022):

The air quality over Delhi-NCT is likely to remain in remain in Poor category on 20.03.2022. The predominant surface wind is likely to be coming from West/Northwest direction of Delhi with wind speed 04-16 kmph and clear sky tomorrow. Ventilation index is likely to be 29,000 m²/s.



Hotspots for Today

City	Station Name	AQI value	Air Quality	Prominent Pollutant
Delhi	Bawana, Delhi - DPCC	339	Very Poor	PM _{2.5}
	Pusa, Delhi - IMD	313	Very Poor	PM _{2.5}
	ITO, Delhi - CPCB	285	Poor	PM _{2.5}
	Jahangirpuri, Delhi - DPCC	273	Poor	PM _{2.5}
	CRRI Mathura Road, Delhi - IMD	267	Poor	PM _{2.5}
Faridabad	Sector 11, Faridabad - HSPCB	294	Poor	PM _{2.5}
	Sector- 16A, Faridabad - HSPCB	258	Poor	PM _{2.5}
Gurugram	Sector-51, Gurugram - HSPCB	242	Poor	PM _{2.5}
Ghaziabad	Loni, Ghaziabad - UPPCB	323	Very Poor	PM _{2.5}
	Sanjay Nagar, Ghaziabad - UPPCB	290	Poor	PM _{2.5}
Greater Noida	Knowledge Park - V, Greater Noida - UPPCB	179	Moderate	PM _{2.5}
Noida	Sector-116, Noida - UPPCB	198	Moderate	PM _{2.5}