



# Central Pollution Control Board

## Air Quality Status for Delhi & NCR

Dated – January 19, 2022



### Current Air Quality Status:

#### Air Quality Index (AQI) (Average of past 24 hours)

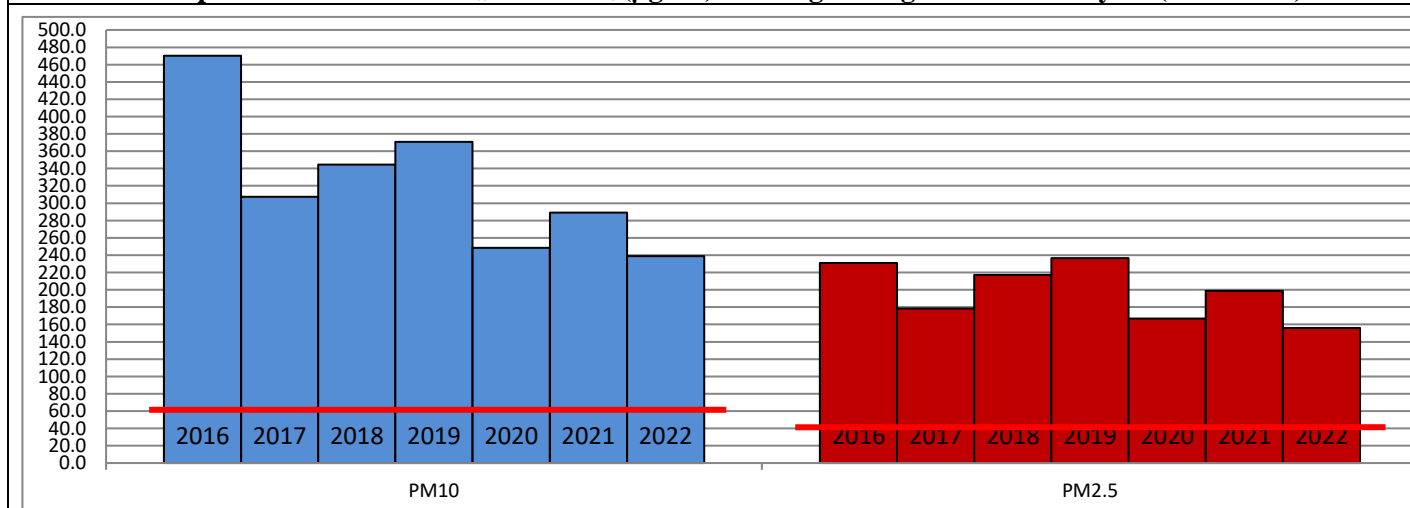
	Air Quality	AQI Value	Prominent Pollutant
Delhi	Very Poor	322↓	PM <sub>10</sub> , PM <sub>2.5</sub>
Faridabad	Very Poor	359↑	PM <sub>2.5</sub>
Ghaziabad	Very Poor	323↓	PM <sub>2.5</sub>
Greater Noida	Very Poor	314↓	PM <sub>2.5</sub>
Gurugram	Very Poor	328↑	PM <sub>2.5</sub>
Noida	Very Poor	310↓	PM <sub>10</sub> , PM <sub>2.5</sub>

\*Data available for 34 stations in Delhi today. # ↓, ↑ arrows indicate increase/decrease as compared to value on the previous day

#### Comparative status of AQI - Delhi from 01 January to 19 January 2016-2022

Category	Year	2016	2017	2018	2019	2020	2021	2022	2016	2017	2018	2019	2020	2021	2022
	No. of days	18	18	18	18	18	18	18							
Good (0–50)		0	0	0	0	0	0	0							
Satisfactory (51–100)		0	0	0	0	0	0	2	0	0	0	0	0	2	5
Moderate (101–200)		0	0	0	0	0	2	3							
Poor (201–300)		2	5	3	4	11	6	4							
Very Poor (301–400)		14	14	13	9	6	5	9	19	19	19	19	19	17	14
Severe (>401)		3	0	3	6	2	6	1							

#### Comparative status of PM<sub>2.5</sub> and PM<sub>10</sub> (µg/m<sup>3</sup>) running average – Till January 18 (2016-2022)



#### Hotspots for Today:

\*Details given overleaf

Delhi	Anand Vihar, Punjabi Bagh, Jahangirpuri, Patparganj, Nehru Nagar	Gurugram	Sector-51, Teri Gram
Faridabad	New Industrial Town, Sector-30	Greater Noida	Knowledge Park – V
Ghaziabad	Sanjay Nagar, Vasundhara	Noida	Sector -116, Sector - 1

#### Forecast by IITM:

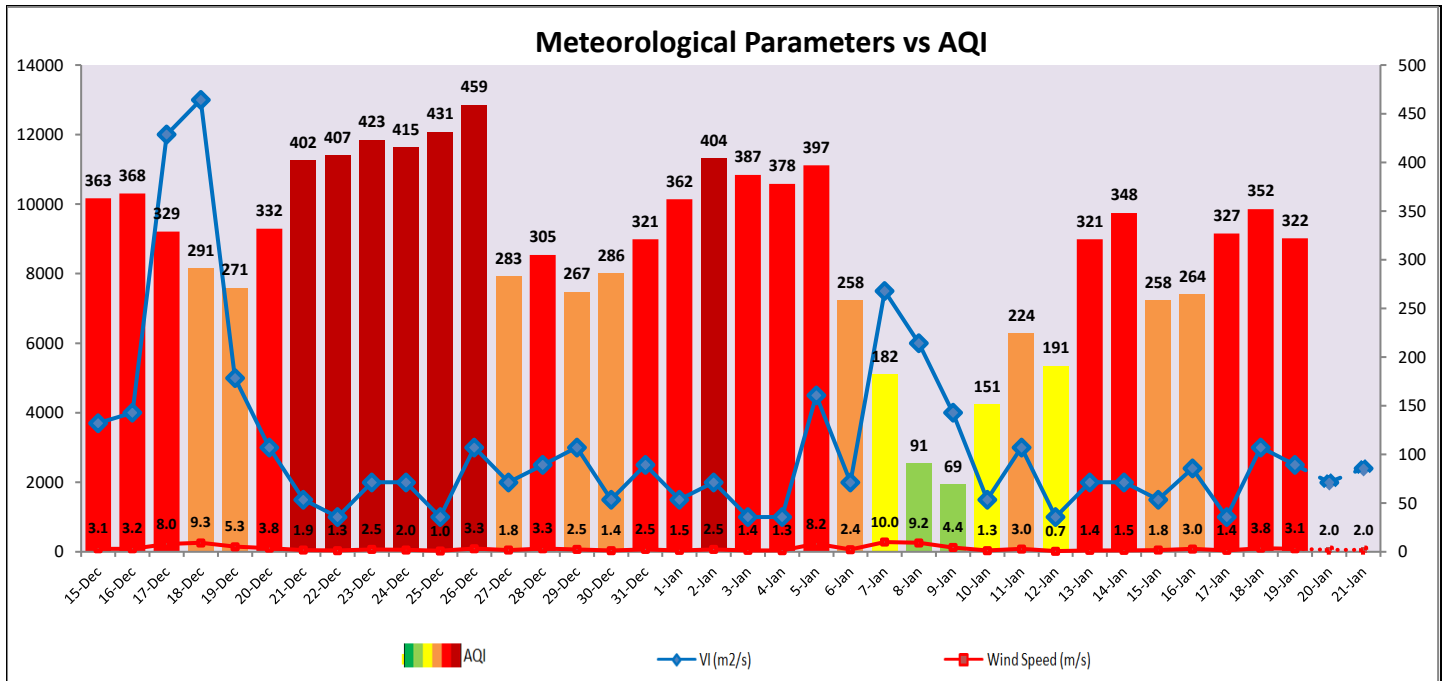
Parameters	January 20, 2022		January 21, 2022-January 22, 2022	
	Concentration	AQI Category	Concentration	AQI Category
PM <sub>10</sub>	271	Poor	197	Moderate
PM <sub>2.5</sub>	157	Very Poor	114	Poor

▪ **Wind Forecast for Delhi:**

	Wind speed (at surface) in km/h		Wind speed (at 900 m) in km/h	Wind Direction	
	As per IMD (at 17:30 hrs.)	As per windy.com (at 16:00 hrs.)	As per windy.com (at 16:00hrs)	As per IMD (at 17:30hrs.)	As per windy.com at 900m
January 20, 2022	04	05	06	NE	S
January 21, 2022	06	06	10	SE	SE
January 22, 2022	06	19	53	SE	SE

▪ **IMD Alert for Tomorrow (20.01.2022):**

The air quality is likely to remain in lower end of Very Poor category on 20.01.2022 and 21.01.2022. The predominant surface wind is likely to be coming from South/Northeast direction of Delhi with wind speed upto 04 kmph, partly cloudy sky and moderate fog in the morning. Ventilation index is likely to be 2,000 m<sup>2</sup>/s.



▪ **Hotspots for Today**

City	Station Name	AQI value	Air Quality	Prominent Pollutant
Delhi	Anand Vihar, Delhi - DPCC	463	Severe	PM <sub>10</sub>
	Jahangirpuri, Delhi - DPCC	404	Severe	PM <sub>2.5</sub>
	Nehru Nagar, Delhi - DPCC	358	Very Poor	PM <sub>2.5</sub>
	Patparganj, Delhi - DPCC	358	Very Poor	PM <sub>2.5</sub>
	Punjabi Bagh, Delhi - DPCC	356	Very Poor	PM <sub>2.5</sub>
Faridabad	New Industrial Town, Faridabad - HSPCB	392	Very Poor	PM <sub>2.5</sub>
	Sector 30, Faridabad - HSPCB	348	Very Poor	PM <sub>2.5</sub>
Gurugram	Sector-51, Gurugram - HSPCB	358	Very Poor	PM <sub>2.5</sub>
	Teri Gram, Gurugram - HSPCB	345	Very Poor	PM <sub>2.5</sub>
Ghaziabad	Sanjay Nagar, Ghaziabad - UPPCB	332	Very Poor	PM <sub>2.5</sub>
	Vasundhara, Ghaziabad - UPPCB	327	Very Poor	PM <sub>2.5</sub>
Greater Noida	Knowledge Park - V, Greater Noida - UPPCB	317	Very Poor	PM <sub>2.5</sub>
Noida	Sector-1, Noida - UPPCB	328	Very Poor	PM <sub>2.5</sub>
	Sector-116, Noida - UPPCB	310	Very Poor	PM <sub>2.5</sub>