



Central Pollution Control Board

Air Quality Status for Delhi & NCR

Dated – December 18, 2022



Current Air Quality Status:

Air Quality Index (AQI) (Average of past 24 hours)

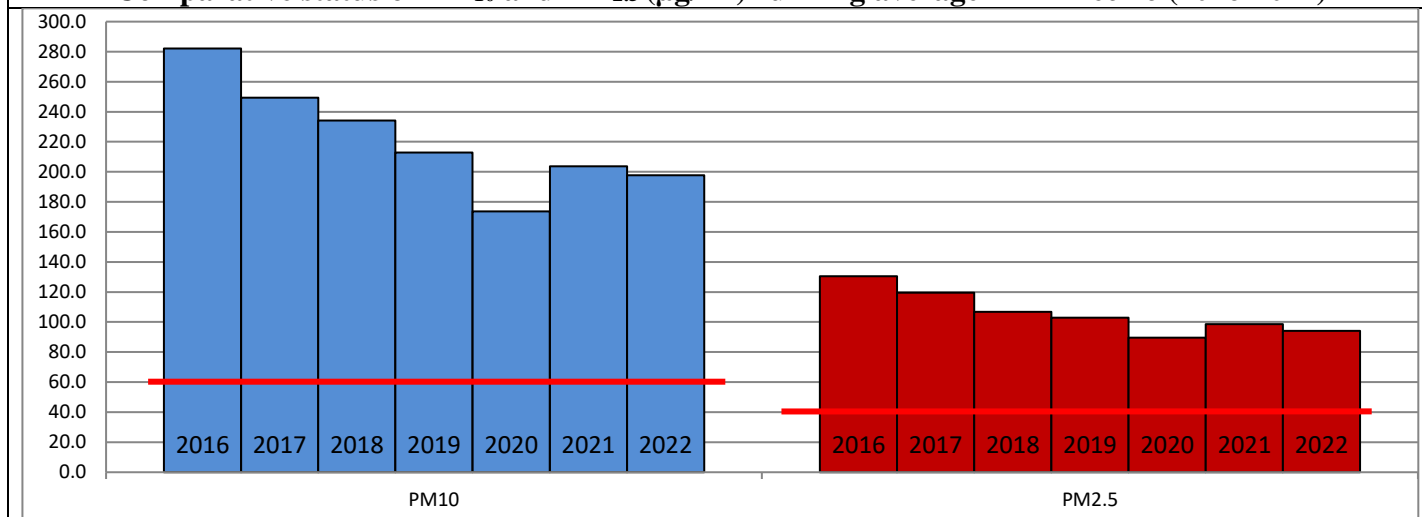
	Air Quality	AQI Value	Prominent Pollutant
Delhi	Very Poor	353 ↑	PM ₁₀ , PM _{2.5}
Faridabad	Poor	305 ↑	PM _{2.5}
Ghaziabad	Poor	354 ↑	PM ₁₀
Greater Noida	Poor	398 ↑	PM ₁₀ , PM _{2.5}
Gurugram	Poor	328 ↑	PM _{2.5}
Noida	Poor	328 ↑	PM _{2.5}

*Data available for 36 stations in Delhi today. # ↑ ↓ arrows indicate a decrease/increase as compared to the value on the previous day.

Comparative status of AQI - Delhi from 01 January to 18 December 2016-2022

Category	Year	2016	2017	2018	2019	2020	2021	2022	2016	2017	2018	2019	2020	2021	2022
	No. of days	341	352	352	352	353	352	352							
Good (0–50)		0	2	0	2	5	1	3							
Satisfactory (51–100)		24	45	53	59	95	81	65	110	152	159	182	227	197	163
Moderate (101–200)		86	105	106	121	127	115	95							
Poor (201–300)		119	113	114	103	71	76	130							
Very Poor (301–400)		90	79	65	48	43	61	54	231	200	193	170	126	155	189
Severe (>401)		22	8	14	19	12	18	5							

Comparative status of PM₁₀ and PM_{2.5} (µg/m³) running average – Till Dec 16 (2016-2022)



Hotspots for Today:

*Details given overleaf

Delhi	Jahangirpuri, Nehru Nagar, Anand Vihar, Shadipur, Rohini	Ghaziabad	Vasundhara
Faridabad	Sector-11, Sector-16A	Greater Noida	Knowledge Park -V
Gurugram	Sector-51, Teri Gram	Noida	Sector-62, Sector-116

Forecast by IITM (Delhi):

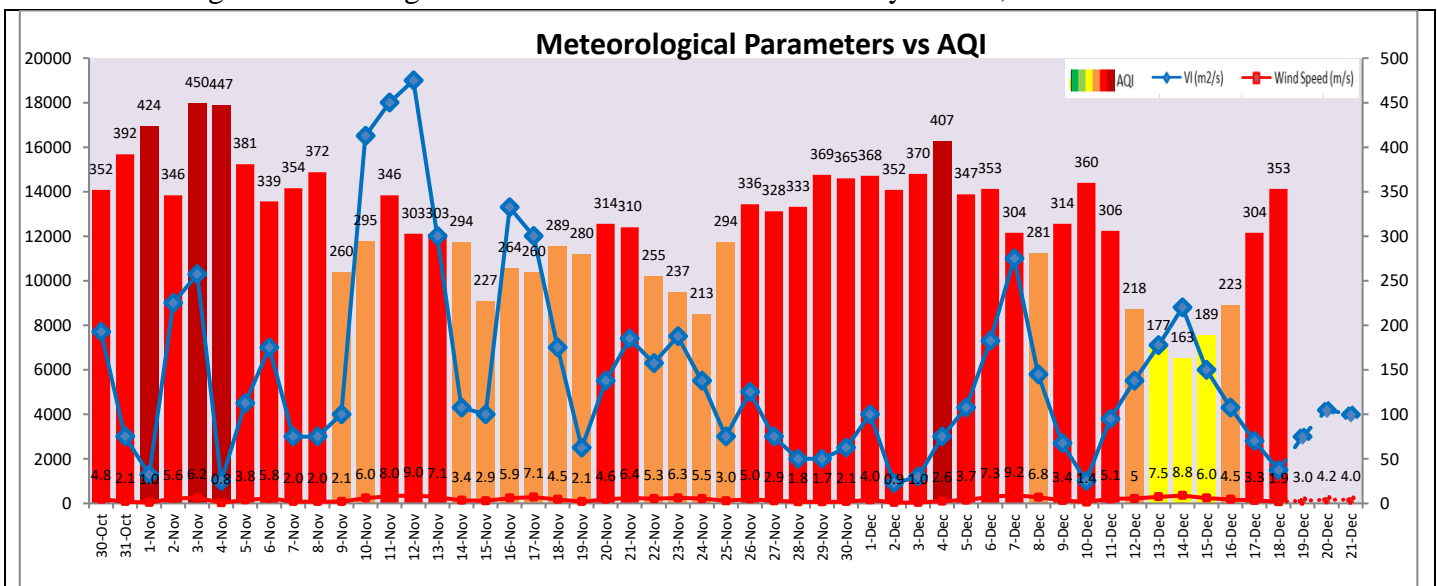
	Dec 19, 2022		Dec 20, 2022- Dec 21, 2022	
	Concentration	AQI Category	Concentration	AQI Category
PM ₁₀	330	Poor	363	Very Poor
PM _{2.5}	212	Very Poor	235	Very Poor

Wind Forecast for Delhi:

	Wind speed (at surface) in km/h		Wind speed (at 900 m) in km/h	Wind Direction	
	As per IMD (range)	As per windy.com (at 16:00 hrs.)	As per windy.com (at 16:00hrs)	As per IMD	As per windy.com at 900m
Dec 19, 2022	04-08	09	11	NW	NW
Dec 20, 2022	06-08	09	19	NW	NW
Dec 21, 2022	08-12	09	13	NW	NW

IMD Alert for Tomorrow (19.12.2022):

The air quality is likely to remain in Very Poor category from 18.12.2022 to 21.12.2022 owing to highly unfavourable meteorological conditions for effective dispersion of pollutants. The predominant surface wind is likely to be coming from Northwest directions in Delhi with wind speed 04-08 kmph, mainly clear sky and mist/shallow fog in the morning tomorrow. Ventilation index is likely to be 3,000 m²/s.



Hotspots for Today

City	Station Name	AQI value	Air Quality	Prominent Pollutant
Delhi	Jahangirpuri, Delhi - DPCC	414	Severe	PM _{2.5}
	Nehru Nagar, Delhi - DPCC	413	Severe	PM _{2.5}
	Anand Vihar, Delhi - DPCC	409	Severe	PM _{2.5}
	Shadipur, Delhi - CPCB	396	Very Poor	PM ₁₀
	Rohini, Delhi - DPCC	395	Very Poor	PM _{2.5}
Faridabad	Sector- 16A, Faridabad - HSPCB	338	Very Poor	PM _{2.5}
	Sector 11, Faridabad - HSPCB	324	Very Poor	PM _{2.5}
Gurugram	Sector-51, Gurugram - HSPCB	369	Very Poor	PM _{2.5}
	Teri Gram, Gurugram - HSPCB	360	Very Poor	PM _{2.5}
Ghaziabad	Vasundhara, Ghaziabad - UPPCB	422	Severe	PM ₁₀
Greater Noida	Knowledge Park - V, Greater Noida - UPPCB	423	Severe	PM ₁₀
Noida	Sector-116, Noida - UPPCB	382	Very Poor	PM _{2.5}
	Sector - 62, Noida - IMD	364	Very Poor	PM _{2.5}