



Central Pollution Control Board

Air Quality Status for Delhi & NCR

Dated – November 18, 2022



Current Air Quality Status:

Air Quality Index (AQI) (Average of past 24 hours)

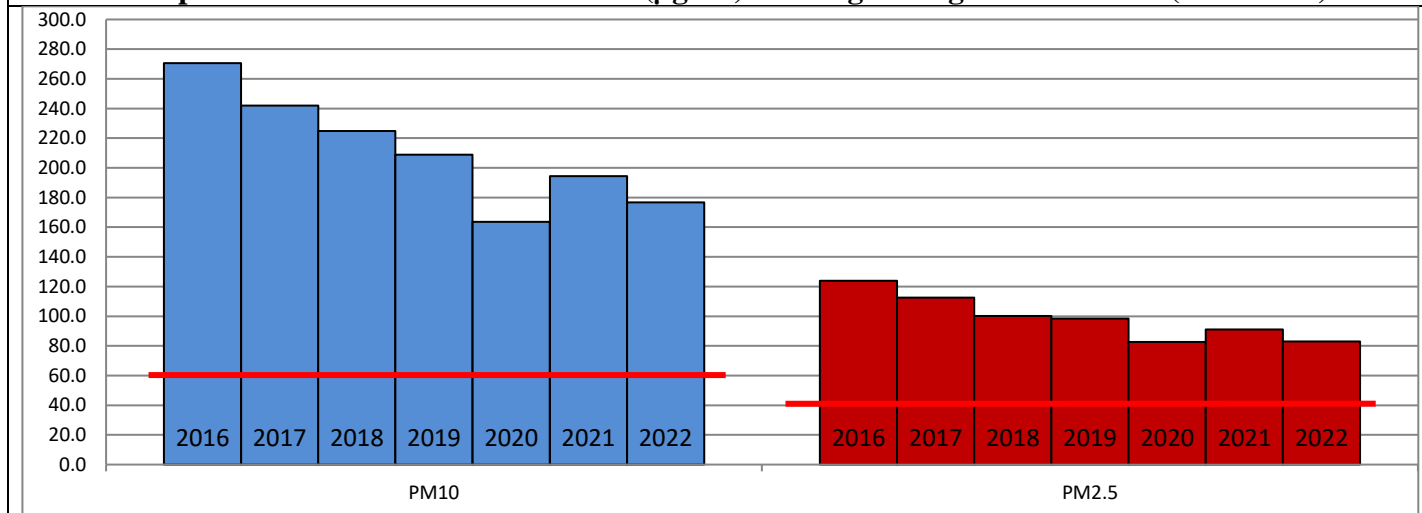
	Air Quality	AQI Value	Prominent Pollutant
Delhi	Poor	289 ↓	PM _{2.5}
Faridabad	Poor	258 ↑	PM _{2.5}
Ghaziabad	Poor	232 ↑	PM _{2.5}
Greater Noida	Poor	228 ↑	PM ₁₀ , PM _{2.5}
Gurugram	Poor	264 ↑	PM _{2.5}
Noida	Poor	223 ↑	PM _{2.5}

*Data available for 35 stations in Delhi today. # ↓ ↑ arrows indicate a decrease/increase as compared to the value on the previous day.

Comparative status of AQI - Delhi from 01 January to 18 November 2016-2022

Category	Year	2016-2022							2016-2022						
		2016	2017	2018	2019	2020	2021	2022	2016	2017	2018	2019	2020	2021	2022
	No. of days	311	322	322	322	323	322	322							
Good (0-50)		0	2	0	2	5	1	3							
Satisfactory (51-100)		24	45	53	58	95	81	65	110	150	158	175	225	197	160
Moderate (101-200)		86	103	105	115	125	115	92							
Poor (201-300)		116	103	107	92	58	69	122							
Very Poor (301-400)		67	61	45	39	30	42	36	201	172	164	147	98	125	162
Severe (>401)		18	8	12	16	10	14	4							

Comparative status of PM₁₀ and PM_{2.5} (µg/m³) running average – Till Nov 17 (2016-2022)



Hotspots for Today:

*Details given overleaf

Delhi	NSIT Dwarka, Shadipur, Sonia Vihar, Alipur, Narela	Ghaziabad	Vasundhara
Faridabad	Sector- 11, Sector-16A	Greater Noida	Knowledge Park-V
Gurugram	Sector-51, Teri Gram	Noida	Sector – 62

Forecast by IITM (Delhi):

	Nov 19, 2022		Nov 20, 2022- Nov 21, 2022	
	Concentration	AQI Category	Concentration	AQI Category
PM ₁₀	241	Moderate	262	Poor
PM _{2.5}	135	Very Poor	148	Very Poor

Wind Forecast for Delhi:

	Wind speed (at surface) in km/h		Wind speed (at 900 m) in km/h	Wind Direction	
	As per IMD (range)	As per windy.com (at 16:00 hrs.)	As per windy.com (at 16:00hrs)	As per IMD	As per windy.com at 900m
Nov 19, 2022	04-10	07	09	NE/NW	N
Nov 20, 2022	08-12	09	28	NW	NW
Nov 21, 2022	10-12	09	25	NW	NW

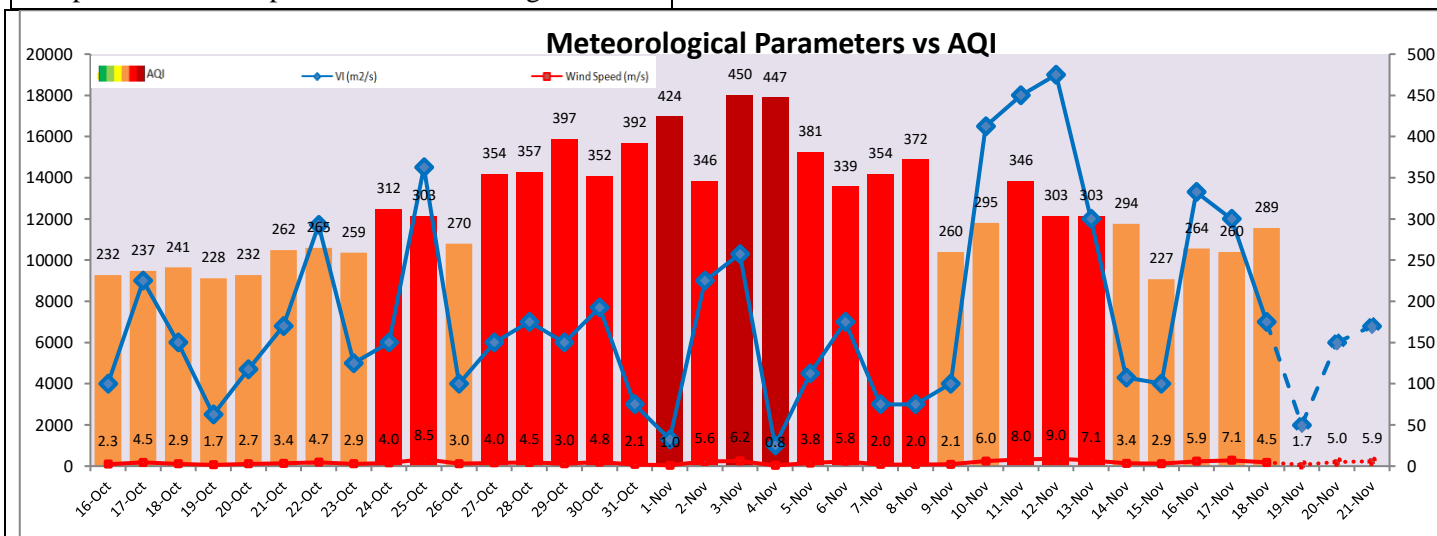
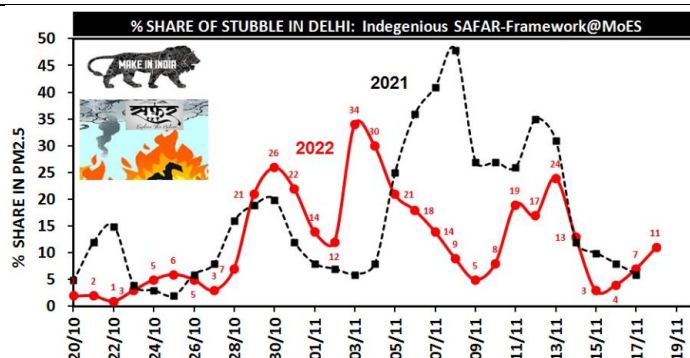
IMD Alert for Tomorrow (19.11.2022):

The air quality is likely to deteriorate further but remain in Very Poor category on 19.11.2022. The predominant surface wind is likely to be coming from Northeast/Northwest direction in Delhi with wind speed 04-10 kmph, partly cloudy sky and mist in the morning tomorrow. Ventilation index is likely to be 2,000 m²/s.

Active Fire Events (AFE):

Date	Punjab		Haryana	
	Nos. on the day	Total since September 15	Nos. on the day	Total since September 15
17.11.2022	966	47788	39	3272
17.11.2021	523	69445	101	6094

* As per IITM, the impact of stubble burning is ~11%.



Hotspots for Today

City	Station Name	AQI value	Air Quality	Prominent Pollutant
Delhi	NSIT Dwarka, Delhi - CPCB	372	Very Poor	PM _{2.5}
	Shadipur, Delhi - CPCB	339	Very Poor	PM _{2.5}
	Sonia Vihar, Delhi - DPCC	334	Very Poor	PM _{2.5}
	Alipur, Delhi - DPCC	320	Very Poor	PM _{2.5}
	Narela, Delhi - DPCC	320	Very Poor	PM _{2.5}
Faridabad	Sector- 16A, Faridabad - HSPCB	281	Poor	PM _{2.5}
	Sector 11, Faridabad - HSPCB	278	Poor	PM _{2.5}
Gurugram	Sector-51, Gurugram - HSPCB	291	Poor	PM _{2.5}
	Teri Gram, Gurugram - HSPCB	236	Poor	PM _{2.5}
Ghaziabad	Vasundhara, Ghaziabad - UPPCB	264	Poor	PM _{2.5}
Greater Noida	Knowledge Park - V, Greater Noida - UPPCB	234	Poor	PM ₁₀
Noida	Sector - 62, Noida - IMD	296	Poor	PM _{2.5}