



Central Pollution Control Board

Air Quality Status for Delhi & NCR

Dated – November 18, 2021



Current Air Quality Status:

Air Quality Index (AQI) (Average of past 24 hours)

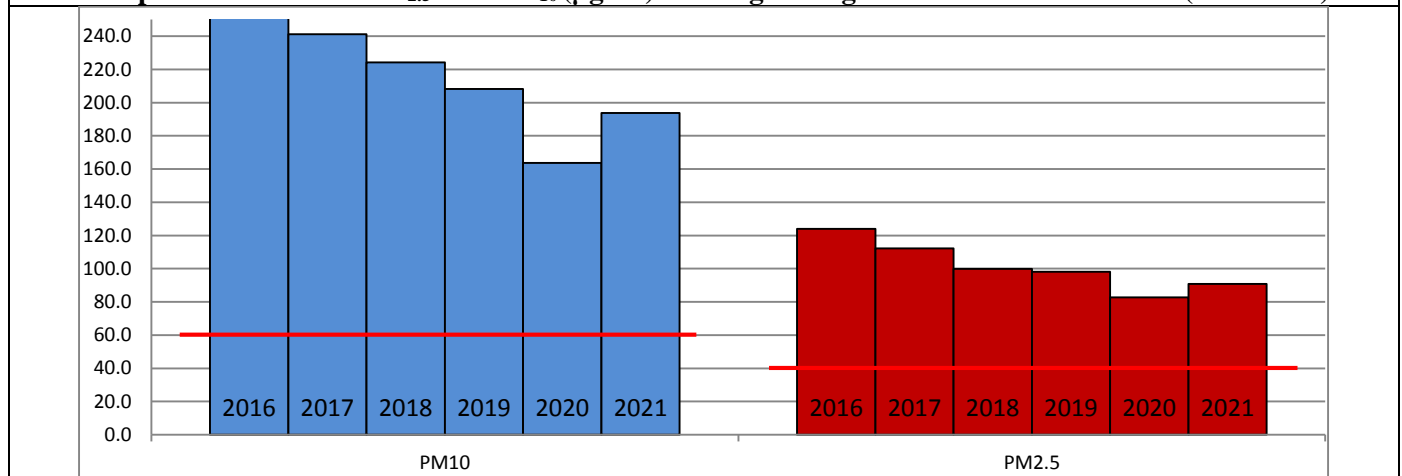
| | Air Quality | AQI Value | Prominent Pollutant |
|---------------|-------------|-----------|--------------------------------------|
| Delhi | Very Poor | 347 ↓ | PM ₁₀ , PM _{2.5} |
| Faridabad | Very Poor | 349 ↓ | PM ₁₀ , PM _{2.5} |
| Ghaziabad | Very Poor | 360 ↓ | PM ₁₀ , PM _{2.5} |
| Greater Noida | Very Poor | 308 ↓ | PM ₁₀ , PM _{2.5} |
| Gurugram | Very Poor | 323 ↓ | PM _{2.5} |
| Noida | Very Poor | 336 ↓ | PM ₁₀ , PM _{2.5} |

*Data available for 37 stations in Delhi today. # ↓, ↑ arrows indicate increase/decrease as compared to value on the previous day

Comparative status of AQI - Delhi from 01 January to 17 November 2016-2021

| Category | Year No. of days | 2016 | 2017 | 2018 | 2019 | 2020 | 2021 | 2016 | 2017 | 2018 | 2019 | 2020 | 2021 |
|-----------------------|---------------------|------|------|------|------|------|------|------|------|------|------|------|------|
| | | 311 | 322 | 322 | 322 | 323 | 322 | 2016 | 2017 | 2018 | 2019 | 2020 | 2021 |
| Good (0-50) | 0 | 2 | 0 | 2 | 5 | 1 | | | | | | | |
| Satisfactory (51-100) | 25 | 45 | 53 | 58 | 95 | 72 | 108 | 150 | 158 | 175 | 225 | 197 | |
| Moderate (101-200) | 83 | 103 | 105 | 115 | 125 | 124 | | | | | | | |
| Poor (201-300) | 116 | 103 | 107 | 92 | 58 | 69 | | | | | | | |
| Very Poor (301-400) | 69 | 61 | 45 | 39 | 30 | 42 | 203 | 172 | 164 | 147 | 98 | 125 | |
| Severe (>401) | 18 | 8 | 12 | 16 | 10 | 14 | | | | | | | |

Comparative status of PM_{2.5} and PM₁₀ (µg/m³) running average - Delhi till November 17 (2016-2021)



* The PM values are 24 hourly averages (6 am to 6 am)

Hotspots for Today:

*Details given overleaf

| | | | |
|-----------|--|---------------|-------------------------|
| Delhi | Shadipur, Jahangirpuri, Bawana, Wazirpur, Mundka | Gurugram | Sector-51, Vikas Sadan |
| Faridabad | Sector 11, New Industrial Town | Greater Noida | Knowledge Park – III |
| Ghaziabad | Loni, Vasundhara | Noida | Sector – 62, Sector-116 |

Forecast by IITM:

| Parameters | November 19, 2021 | | November 20, 2021– November 21, 2021 | |
|-------------------|-------------------|--------------|--------------------------------------|--------------|
| | Concentration | AQI Category | Concentration | AQI Category |
| PM ₁₀ | 320 | Poor | 348 | Poor |
| PM _{2.5} | 186 | Very Poor | 203 | Very Poor |

Wind Forecast for Delhi:

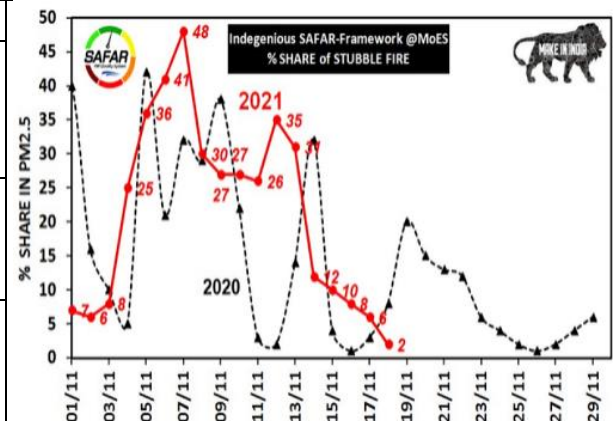
| Dates | Wind speed (at surface) in km/h | | Wind speed (at 900 m) in km/h | Wind Direction | |
|-------------------|---------------------------------|----------------------------------|--------------------------------|---------------------------|--------------------------|
| | As per IMD (at 17:30 hrs.) | As per windy.com (at 16:00 hrs.) | As per windy.com (at 16:00hrs) | As per IMD (at 17:30hrs.) | As per windy.com at 900m |
| November 19, 2021 | CALM | 04 | 06 | - | NW |
| November 20, 2021 | 04 | 07 | 15 | NW | SE |
| November 21, 2021 | 12 | 08 | 18 | NW | NW |

IMD Alert for Tomorrow (19.11.2021):

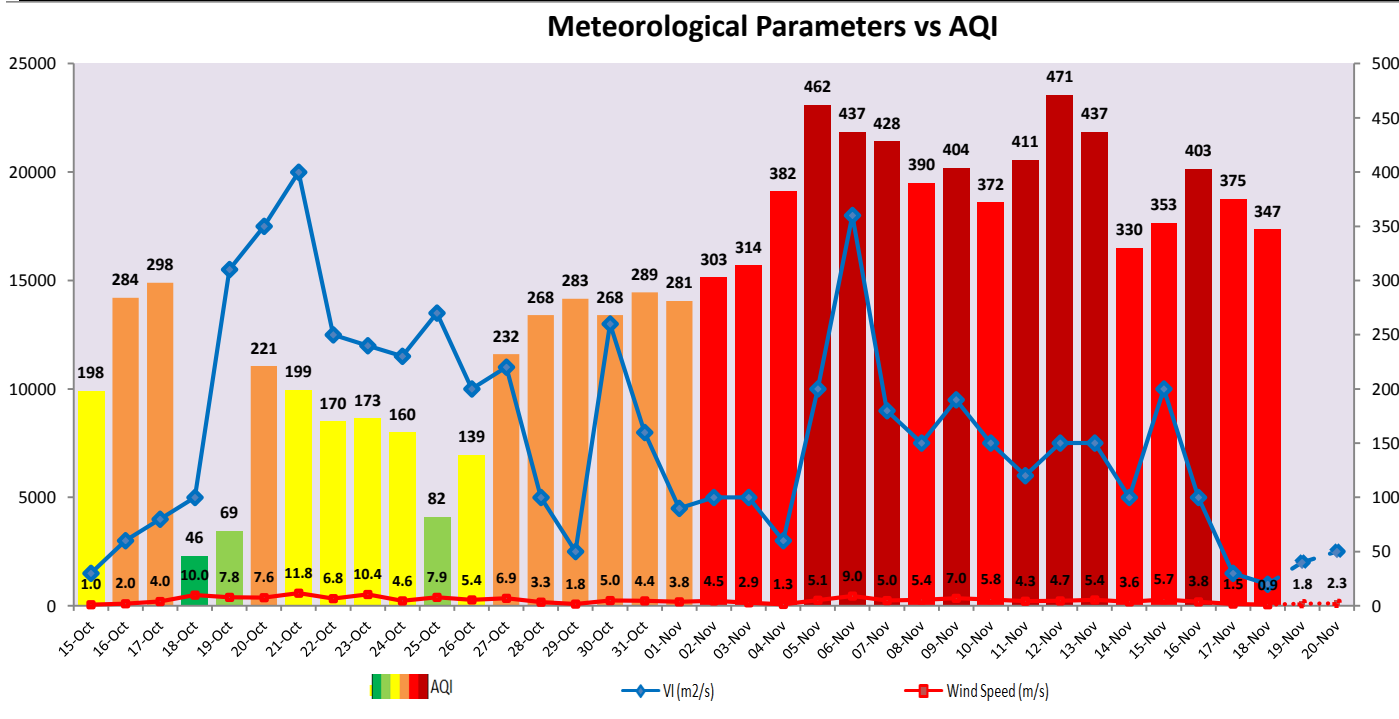
The air quality over Delhi-NCT is likely to improve and reach in lower end of Very Poor category tomorrow. The predominant surface wind is likely to remain calm during morning/evening hours and coming from Northwest direction of Delhi with wind speed upto 04 kmph during day time with partly cloudy sky and shallow fog in the morning. Ventilation index is likely to be 2,000 m²/s.

Active Fire Events (AFEs)

| Date | Punjab | | Haryana | |
|------------|-----------------|--------------------------|-----------------|--------------------------|
| | Nos. on the day | Total since September 21 | Nos. on the day | Total since September 21 |
| 17.11.2021 | 523 | 69445 | 101 | 6094 |
| 17.11.2020 | 248 | 80346 | 9 | 3710 |



The contribution of biomass burning in PM_{2.5} concentration is likely to be negligible on 18.11.2021 as winds are not favourable for transportation of pollutants.



▪ **Hotspots for Today**

| City | Station Name | AQI value | Air Quality | Prominent Pollutant |
|---------------|---|-----------|-------------|---------------------|
| Delhi | Jahangirpuri, Delhi - DPCC | 420 | Severe | PM _{2.5} |
| | Shadipur, Delhi - CPCB | 408 | Severe | PM _{2.5} |
| | Bawana, Delhi - DPCC | 407 | Severe | PM _{2.5} |
| | Wazirpur, Delhi - DPCC | 400 | Severe | PM ₁₀ |
| | Mundka, Delhi - DPCC | 396 | Very Poor | PM _{2.5} |
| Faridabad | Sector 11, Faridabad - HSPCB | 420 | Severe | PM ₁₀ |
| | New Industrial Town, Faridabad - HSPCB | 341 | Very Poor | PM ₁₀ |
| Gurugram | Vikas Sadan, Gurugram - HSPCB | 353 | Very Poor | PM ₁₀ |
| | Sector-51, Gurugram - HSPCB | 324 | Very Poor | PM _{2.5} |
| Ghaziabad | Loni, Ghaziabad - UPPCB | 376 | Very Poor | PM _{2.5} |
| | Vasundhara, Ghaziabad - UPPCB | 363 | Very Poor | PM _{2.5} |
| Greater Noida | Knowledge Park - III, Greater Noida - UPPCB | 313 | Very Poor | PM _{2.5} |
| Noida | Sector-116, Noida - UPPCB | 345 | Very Poor | PM ₁₀ |
| | Sector - 62, Noida - IMD | 344 | Very Poor | PM _{2.5} |