



Central Pollution Control Board

Air Quality Status for Delhi & NCR

Dated – October 18, 2022



Current Air Quality Status:

Air Quality Index (AQI) (Average of past 24 hours)

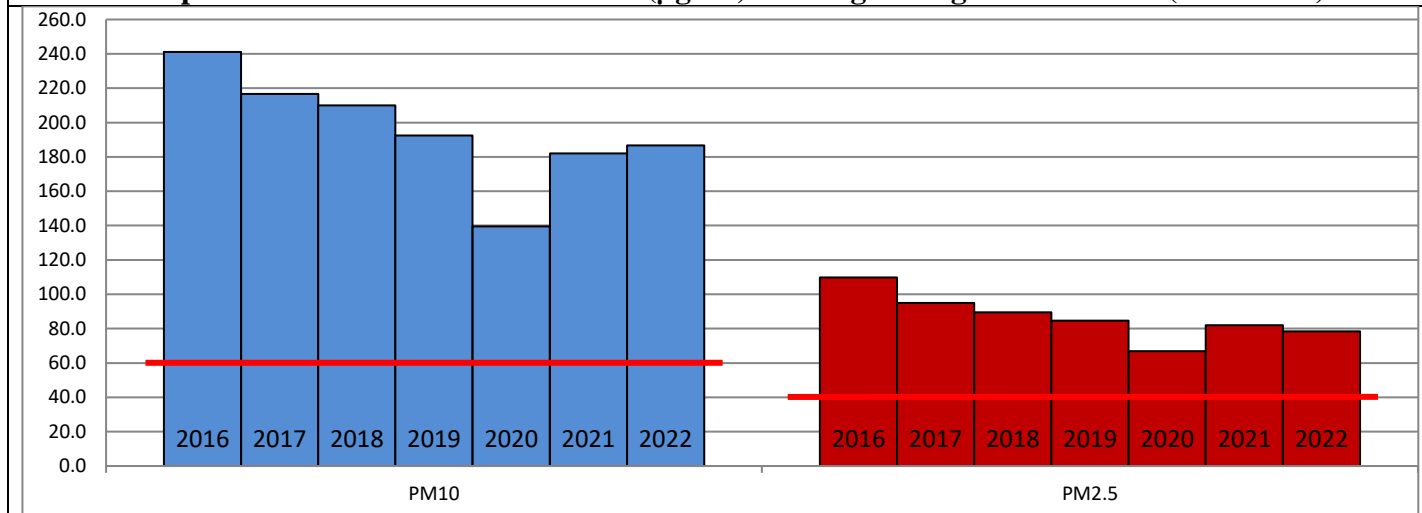
	Air Quality	AQI Value	Prominent Pollutant
Delhi	Poor	241 ↓	PM ₁₀ , PM _{2.5}
Faridabad	Poor	258 ↓	PM ₁₀ , O ₃
Ghaziabad	Poor	254 ↓	PM ₁₀ , PM _{2.5} , O ₃
Greater Noida	Poor	216 ↓	O ₃ , PM _{2.5}
Gurugram	Poor	258 ↓	PM _{2.5}
Noida	Poor	242 ↓	PM ₁₀ , PM _{2.5}

*Data available for 33 stations in Delhi today. # ↓ ↑ arrows indicate a decrease/increase as compared to the value on the previous day.

Comparative status of AQI - Delhi from 01 January to 18 October 2016-2022

Category	Year	2016	2017	2018	2019	2020	2021	2022	2016	2017	2018	2019	2020	2021	2022
	No. of days	280	291	291	291	292	291	291							
Good (0–50)		0	2	0	2	5	1	3							
Satisfactory (51–100)		24	45	53	58	95	79	65	110	150	157	174	224	190	160
Moderate (101–200)		86	103	104	114	124	110	92							
Poor (201–300)		110	102	99	82	50	62	109							
Very Poor (301–400)		54	39	29	28	16	33	21	170	141	134	117	68	101	131
Severe (>401)		6	0	6	7	2	6	1							

Comparative status of PM₁₀ and PM_{2.5} (µg/m³) running average – Till Oct 17 (2016-2022)



Hotspots for Today:

*Details given overleaf

Delhi	Anand Vihar, Jahangirpuri, Wazirpur, Shadipur, North Campus	Ghaziabad	Loni
Faridabad	Sector 11	Greater Noida	Knowledge Park - V
Gurugram	Sector-51	Noida	Sector-116, Sector-1

Forecast by IITM (Delhi):

	Oct 19, 2022		Oct 20, 2022- Oct 21, 2022	
	Concentration	AQI Category	Concentration	AQI Category
PM ₁₀	238	Moderate	260	Poor
PM _{2.5}	108	Poor	118	Poor

Wind Forecast for Delhi:

	Wind speed (at surface) in km/h		Wind speed (at 900 m) in km/h	Wind Direction	
	As per IMD (range)	As per windy.com (at 16:00 hrs.)	As per windy.com (at 16:00hrs)	As per IMD	As per windy.com at 900m
Oct 19, 2022	Upto 08	05	14	SE	W
Oct 20, 2022	Upto 08	05	06	SE	SW
Oct 21, 2022	06-10	03	22	NE	W

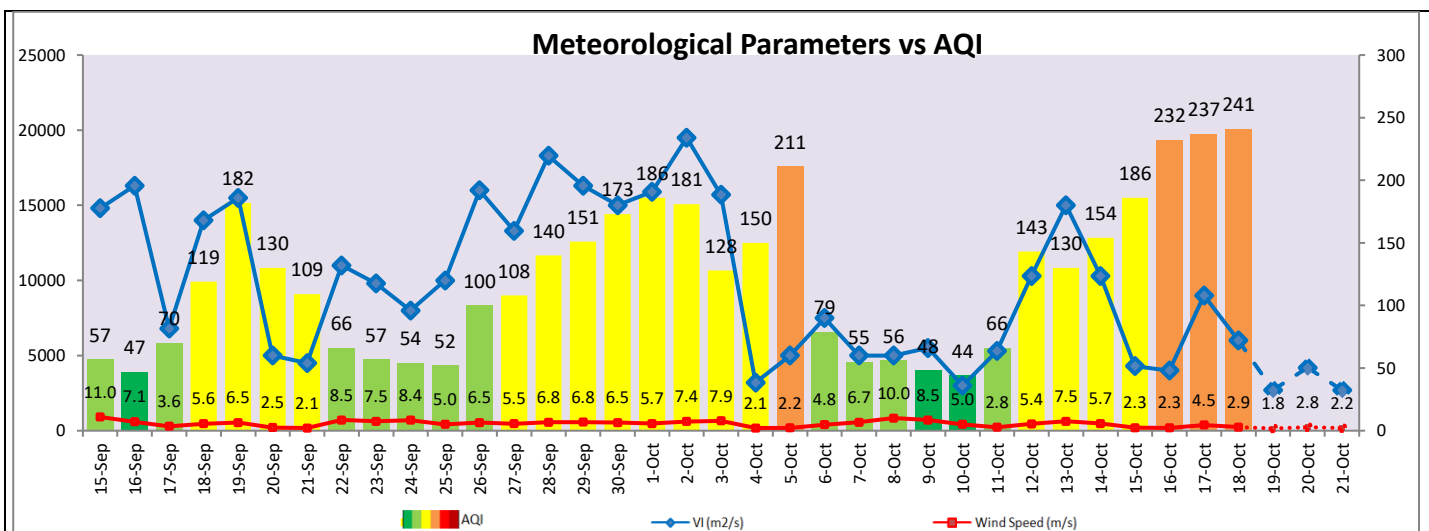
IMD Alert for Tomorrow (19.10.2022):

The overall air quality over Delhi is likely to remain in Poor category from 18.10.2022 to 21.10.2022. The predominant surface wind is likely to be coming from Southeast direction in Delhi with wind speed upto 08 kmph and mainly clear sky tomorrow. Ventilation index is likely to be 2,7000 m²/s.

Active Fire Events (AFEs):

Date	Punjab		Haryana	
	Nos. on the day	Total since September 15	Nos. on the day	Total since September 15
17.10.2022	403	1847	86	330
17.10.2021	14	2389	0	1026

* As per IITM, the impact of stubble burning is negligible.



Hotspots for Today

City	Station Name	AQI value	Air Quality	Prominent Pollutant
Delhi	Shadipur, Delhi - CPCB	361	Very Poor	PM _{2.5}
	Wazirpur, Delhi - DPCC	309	Very Poor	PM ₁₀
	North Campus, DU, Delhi - IMD	303	Very Poor	PM _{2.5}
	Jahangirpuri, Delhi - DPCC	300	Poor	PM ₁₀
	Anand Vihar, Delhi - DPCC	298	Poor	PM _{2.5}
Faridabad	Sector 11, Faridabad - HSPCB	294	Poor	PM _{2.5}
Gurugram	Sector-51, Gurugram - HSPCB	323	Very Poor	PM _{2.5}
Ghaziabad	Loni, Ghaziabad - UPPCB	319	Very Poor	PM _{2.5}
Greater Noida	Knowledge Park - V, Greater Noida - UPPCB	229	Poor	O ₃
Noida	Sector-1, Noida - UPPCB	265	Poor	PM ₁₀
	Sector-116, Noida - UPPCB	261	Poor	PM _{2.5}