



Central Pollution Control Board

Air Quality Status for Delhi & NCR

Dated – May 18, 2022



Current Air Quality Status:

■ Air Quality Index (AQI) (Average of past 24 hours)

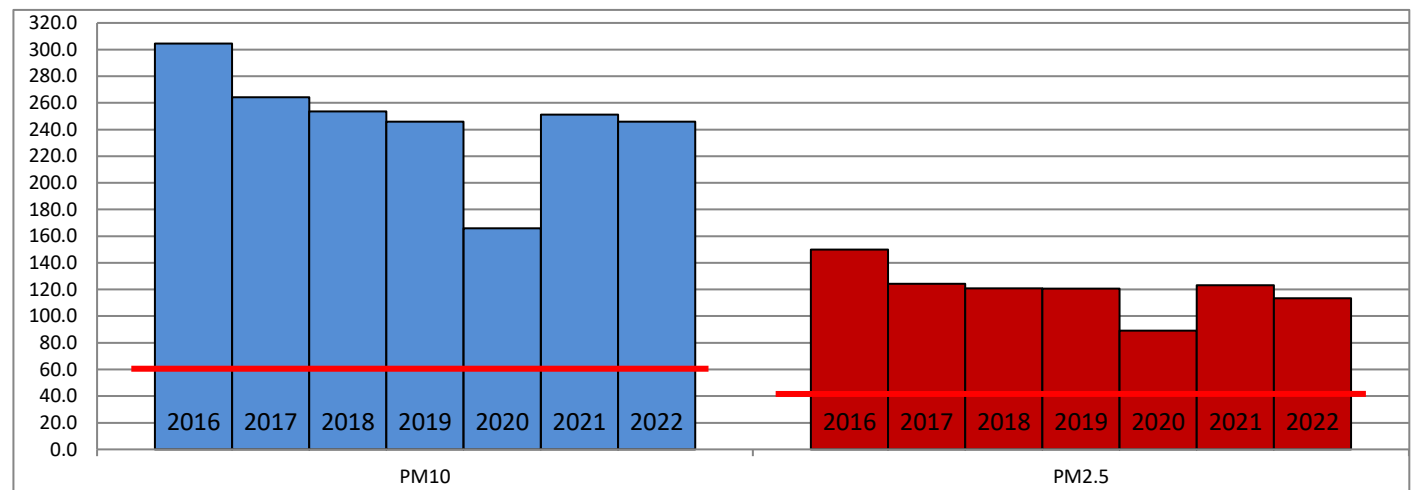
	Air Quality	AQI Value	Prominent Pollutant
Delhi	Poor	251 ↑	PM _{2.5} , PM ₁₀
Faridabad	Poor	289 ↑	PM _{2.5} , PM ₁₀
Ghaziabad	Poor	221 ↓	PM ₁₀ , O ₃
Greater Noida	Poor	250 ↓	PM ₁₀
Gurugram	Poor	193 ↓	PM _{2.5} , PM ₁₀
Noida	Poor	243 ↓	PM ₁₀

*Data available for 30 stations in Delhi today. # ↑ ↓ arrows indicate increase/decrease as compared to value on the previous day

■ Comparative status of AQI - Delhi from 01 January to 18 May 2016-2022

Category	Year	2016	2017	2018	2019	2020	2021	2022	2016	2017	2018	2019	2020	2021	2022
	No. of days	134	138	138	138	139	138	138							
Good (0–50)		0	0	0	0	1	0	0							
Satisfactory (51–100)		0	0	1	2	27	1	3	11	32	42	50	86	47	33
Moderate (101–200)		11	32	41	48	58	46	30							
Poor (201–300)		68	71	67	55	36	53	86							
Very Poor (301–400)		49	35	26	26	15	32	18	123	106	96	88	53	91	105
Severe (>401)		6	0	3	7	2	6	1							

Comparative status of PM_{2.5} and PM₁₀ (µg/m³) running average – Till May 17 (2016-2022)



■ Hotspots for Today:

*Details given overleaf

Delhi	Mundka, DTU, Narela, NSIT Dwarka, Bawana	Gurugram	Sector-51, Teri Gram
Faridabad	Sector 11, New Industrial Town	Greater Noida	Knowledge Park - V
Ghaziabad	Loni, Vasundhara	Noida	Sector - 1, Sector-116

■ Forecast by IITM:

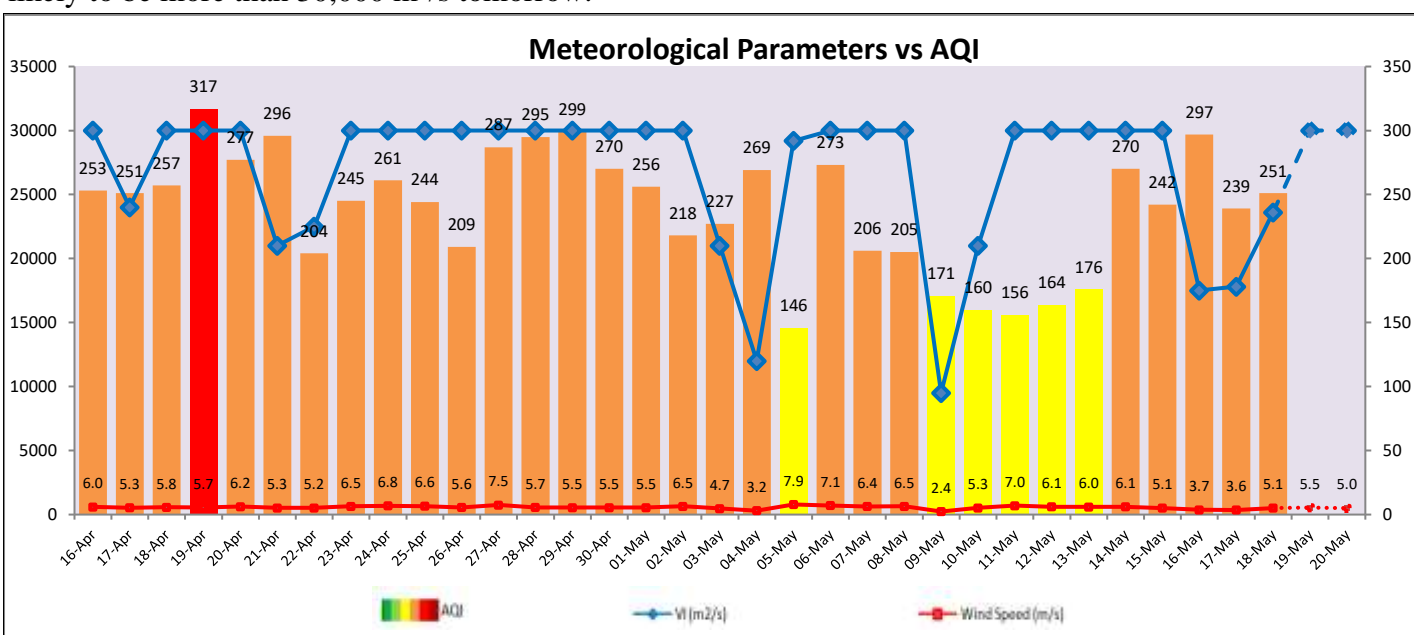
Parameters	May 19, 2022		May 20, 2022- May 21, 2022	
	Concentration	AQI Category	Concentration	AQI Category
PM ₁₀	309	Poor	365	Very Poor
PM _{2.5}	92	Poor	109	Poor

Wind Forecast for Delhi:

	Wind speed (at surface) in km/h		Wind speed (at 900 m) in km/h	Wind Direction	
	As per IMD (at 17:30 hrs.)	As per windy.com (at 16:00 hrs.)	As per windy.com (at 16:00hrs)	As per IMD (at 17:30hrs.)	As per windy.com at 900m
May 19, 2022	10	18	28	WSW	NE
May 20, 2022	15	13	17	W	N
May 21, 2022	10	14	17	WSW	SE

IMD Alert for Tomorrow (19.05.2022):

The air quality is likely to remain in Poor category on 19.05.2022 and 20.05.2022. The predominant surface wind is likely to be coming from West/Southwest direction of Delhi with wind speed 05-20 kmph, and mainly clear sky tomorrow. **Long range transported dust will also impact air quality over parts of Rajasthan, Gujarat, Madhya Pradesh, and parts of Maharashtra during next two days.** The ventilation index is likely to be more than 30,000 m²/s tomorrow.



Hotspots for Today

City	Station Name	AQI value	Air Quality	Prominent Pollutant
Delhi	Bawana, Delhi - DPCC	343	Very Poor	PM ₁₀
	Narela, Delhi - DPCC	311	Very Poor	PM ₁₀
	DTU, Delhi - CPCB	301	Very Poor	PM _{2.5}
	Mundka, Delhi - DPCC	294	Poor	PM ₁₀
	NSIT Dwarka, Delhi - CPCB	293	Poor	PM _{2.5}
Faridabad	New Industrial Town, Faridabad - HSPCB	308	Very Poor	PM ₁₀
	Sector 11, Faridabad - HSPCB	289	Poor	PM _{2.5}
Gurugram	Teri Gram, Gurugram - HSPCB	288	Poor	PM _{2.5}
	Sector-51, Gurugram - HSPCB	235	Poor	PM ₁₀
Ghaziabad	Loni, Ghaziabad - UPPCB	283	Poor	PM ₁₀
	Vasundhara, Ghaziabad - UPPCB	254	Poor	PM ₁₀
Greater Noida	Knowledge Park - V, Greater Noida - UPPCB	275	Poor	PM ₁₀
Noida	Sector-116, Noida - UPPCB	261	Poor	PM ₁₀
	Sector-1, Noida - UPPCB	253	Poor	PM ₁₀