



Central Pollution Control Board

Air Quality Status for Delhi & NCR

Dated – January 18, 2022



Current Air Quality Status:

Air Quality Index (AQI) (Average of past 24 hours)

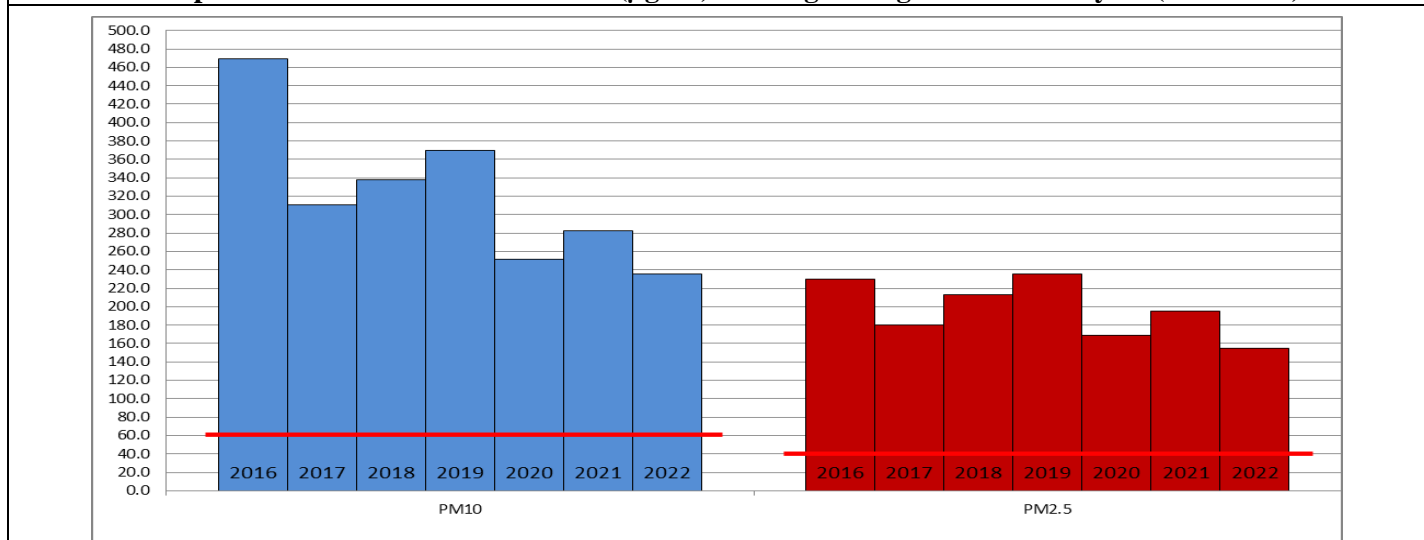
	Air Quality	AQI Value	Prominent Pollutant
Delhi	Very Poor	352↑	PM ₁₀ , PM _{2.5}
Faridabad	Very Poor	334↑	PM ₁₀ , PM _{2.5}
Ghaziabad	Very Poor	347↓	PM _{2.5}
Greater Noida	Very Poor	325↑	PM _{2.5}
Gurugram	Very Poor	315↑	PM _{2.5}
Noida	Very Poor	334↑	PM _{2.5}

*Data available for 31 stations in Delhi today. # ↓, ↑ arrows indicate increase/decrease as compared to value on the previous day

Comparative status of AQI - Delhi from 01 January to 18 January 2016-2022

Category	Year	2016	2017	2018	2019	2020	2021	2022	2016	2017	2018	2019	2020	2021	2022
		No. of days													
Good (0–50)		0	0	0	0	0	0	0							
Satisfactory (51–100)		0	0	0	0	0	0	2	0	0	0	0	0	2	5
Moderate (101–200)		0	0	0	0	0	2	3							
Poor (201–300)		2	5	3	4	10	6	4							
Very Poor (301–400)		13	13	13	8	6	5	8	18	18	18	18	18	16	13
Severe (>401)		3	0	2	6	2	5	1							

Comparative status of PM_{2.5} and PM₁₀ (µg/m³) running average – Till January 17 (2016-2022)



Hotspots for Today:

*Details given overleaf

Delhi	Anand Vihar, Punjabi Bagh, Jahangirpuri, Rohini, Wazirpur	Gurugram	Sector-51, Teri Gram
Faridabad	Sector-16A, Sector-30	Greater Noida	Knowledge Park – V
Ghaziabad	Sanjay Nagar, Loni	Noida	Sector -62, Sector - 1

Forecast by IITM:

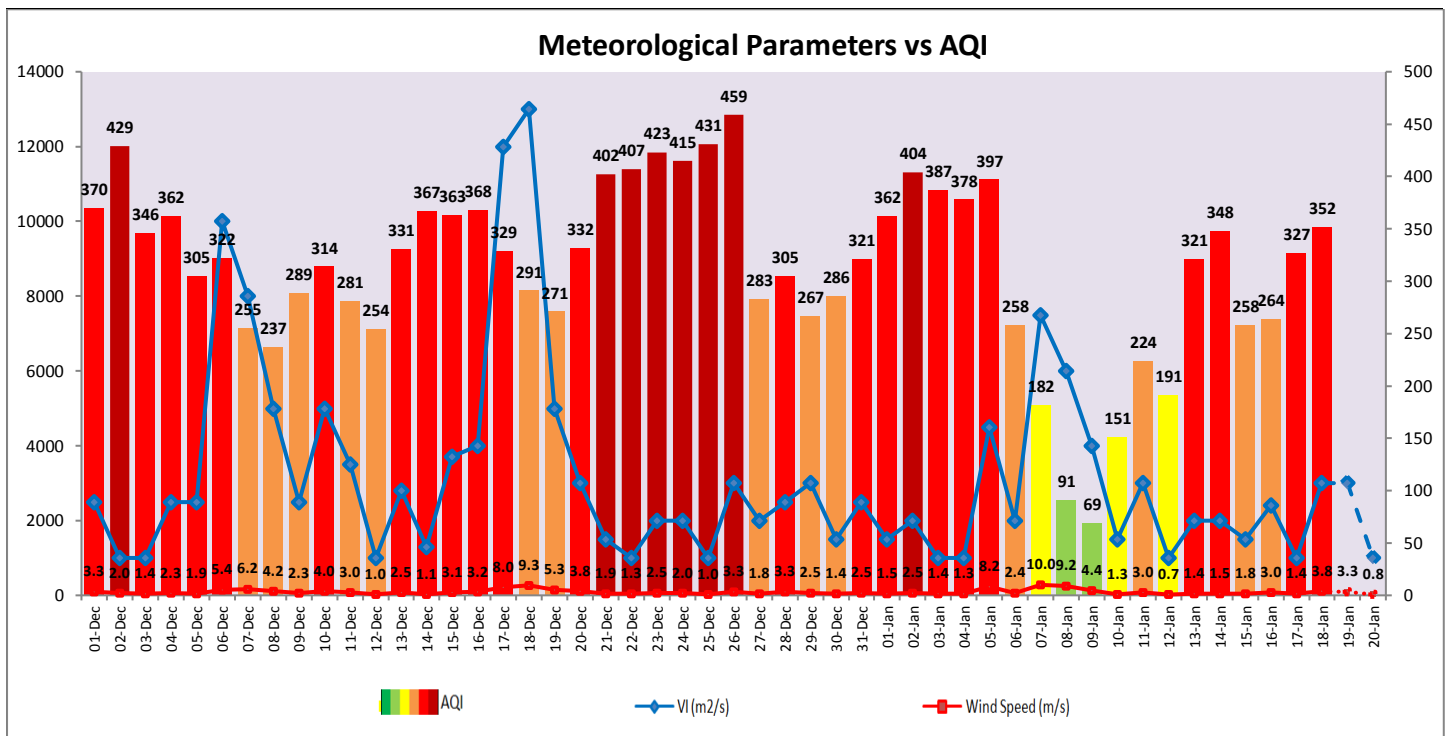
Parameters	January 19, 2022		January 20, 2022-January 21, 2022	
	Concentration	AQI Category	Concentration	AQI Category
PM ₁₀	300	Poor	327	Poor
PM _{2.5}	176	Very Poor	192	Very Poor

▪ **Wind Forecast for Delhi:**

	Wind speed (at surface) in km/h		Wind speed (at 900 m) in km/h	Wind Direction	
	As per IMD (at 17:30 hrs.)	As per windy.com (at 16:00 hrs.)	As per windy.com (at 16:00hrs)	As per IMD (at 17:30hrs.)	As per windy.com at 900m
January 19, 2022	CALM	04	09	-	NW
January 20, 2022	04	05	02	NE	N
January 21, 2022	16	05	08	SE	SE

▪ **IMD Alert for Tomorrow (19.01.2022):**

The air quality is likely to improve marginally but remain in lower end of very Poor to Poor category tomorrow. The predominant surface wind is likely to be coming from Northwest direction of Delhi with wind speed upto 04 kmph during day time, likely to remain calm during evening/night with partly cloudy sky and shallow fog in the morning. Ventilation index is likely to be 1,000 m²/s.



▪ **Hotspots for Today**

City	Station Name	AQI value	Air Quality	Prominent Pollutant
Delhi	Jahangirpuri, Delhi - DPCC	438	Severe	PM _{2.5}
	Anand Vihar, Delhi - DPCC	427	Severe	PM ₁₀
	Wazirpur, Delhi - DPCC	406	Severe	PM _{2.5}
	Punjabi Bagh, Delhi - DPCC	405	Severe	PM _{2.5}
	Rohini, Delhi - DPCC	394	Very Poor	PM _{2.5}
Faridabad	Sector 30, Faridabad - HSPCB	347	Very Poor	PM _{2.5}
	Sector- 16A, Faridabad - HSPCB	338	Very Poor	PM _{2.5}
Gurugram	Teri Gram, Gurugram - HSPCB	337	Very Poor	PM _{2.5}
	Sector-51, Gurugram - HSPCB	335	Very Poor	PM _{2.5}
Ghaziabad	Loni, Ghaziabad - UPPCB	367	Very Poor	PM _{2.5}
	Sanjay Nagar, Ghaziabad - UPPCB	349	Very Poor	PM _{2.5}
Greater Noida	Knowledge Park - V, Greater Noida - UPPCB	325	Very Poor	PM _{2.5}
Noida	Sector-1, Noida - UPPCB	349	Very Poor	PM _{2.5}
	Sector - 62, Noida - IMD	345	Very Poor	PM ₁₀