



Central Pollution Control Board

Air Quality Status for Delhi & NCR

Dated – December 17, 2022



Current Air Quality Status:

Air Quality Index (AQI) (Average of past 24 hours)

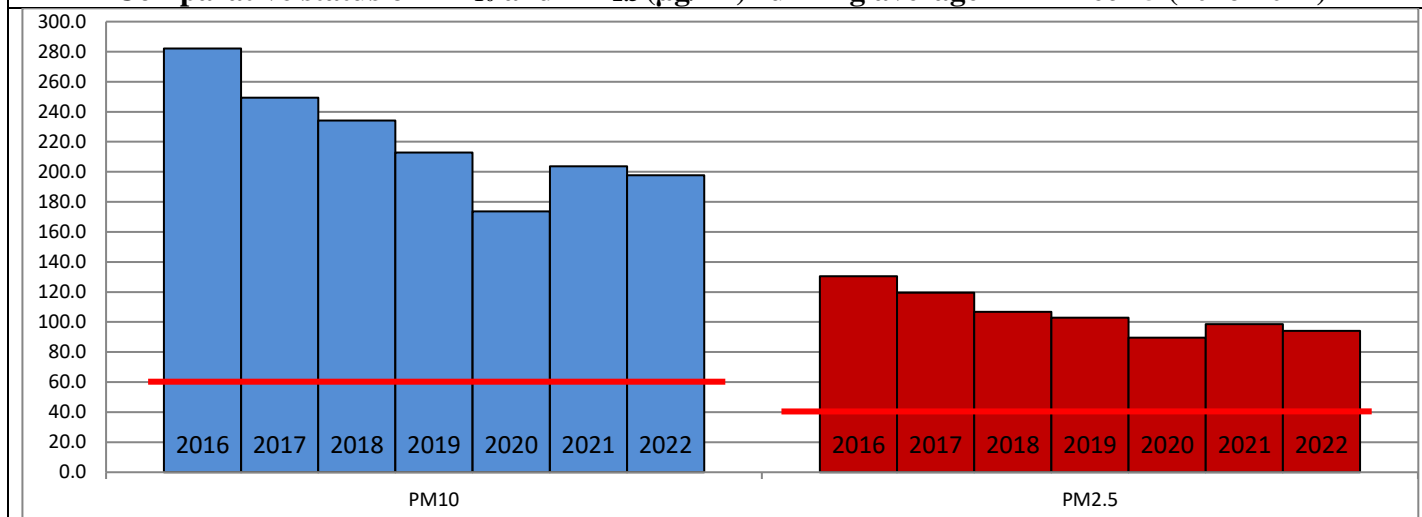
	Air Quality	AQI Value	Prominent Pollutant
Delhi	Very Poor	304 ↑	PM _{2.5}
Faridabad	Poor	254 ↑	PM _{2.5}
Ghaziabad	Poor	285 ↑	PM ₁₀
Greater Noida	Poor	300 ↑	PM ₁₀
Gurugram	Poor	287 ↑	PM _{2.5}
Noida	Poor	288 ↑	PM _{2.5}

*Data available for 36 stations in Delhi today. # ↑ ↓ arrows indicate a decrease/increase as compared to the value on the previous day.

Comparative status of AQI - Delhi from 01 January to 17 December 2016-2022

Category	Year	2016	2017	2018	2019	2020	2021	2022	2016	2017	2018	2019	2020	2021	2022
	No. of days	340	351	351	351	352	351	351							
Good (0–50)		0	2	0	2	5	1	3							
Satisfactory (51–100)		24	45	53	59	95	81	65	110	152	159	182	227	197	163
Moderate (101–200)		86	105	106	121	127	115	95							
Poor (201–300)		119	112	114	102	70	75	130							
Very Poor (301–400)		89	79	64	48	43	61	53	230	199	192	169	125	154	188
Severe (>401)		22	8	14	19	12	18	5							

Comparative status of PM₁₀ and PM_{2.5} (µg/m³) running average – Till Dec 15 (2016-2022)



Hotspots for Today:

*Details given overleaf

Delhi	Shadipur, Anand Vihar, NSIT Dwarka, Jahangirpuri, Vivek Vihar	Ghaziabad	Vasundhara
Faridabad	Sector-11, New Industrial Town	Greater Noida	Knowledge Park -V
Gurugram	Sector-51, Teri Gram	Noida	Sector-62, Sector-116

Forecast by IITM (Delhi):

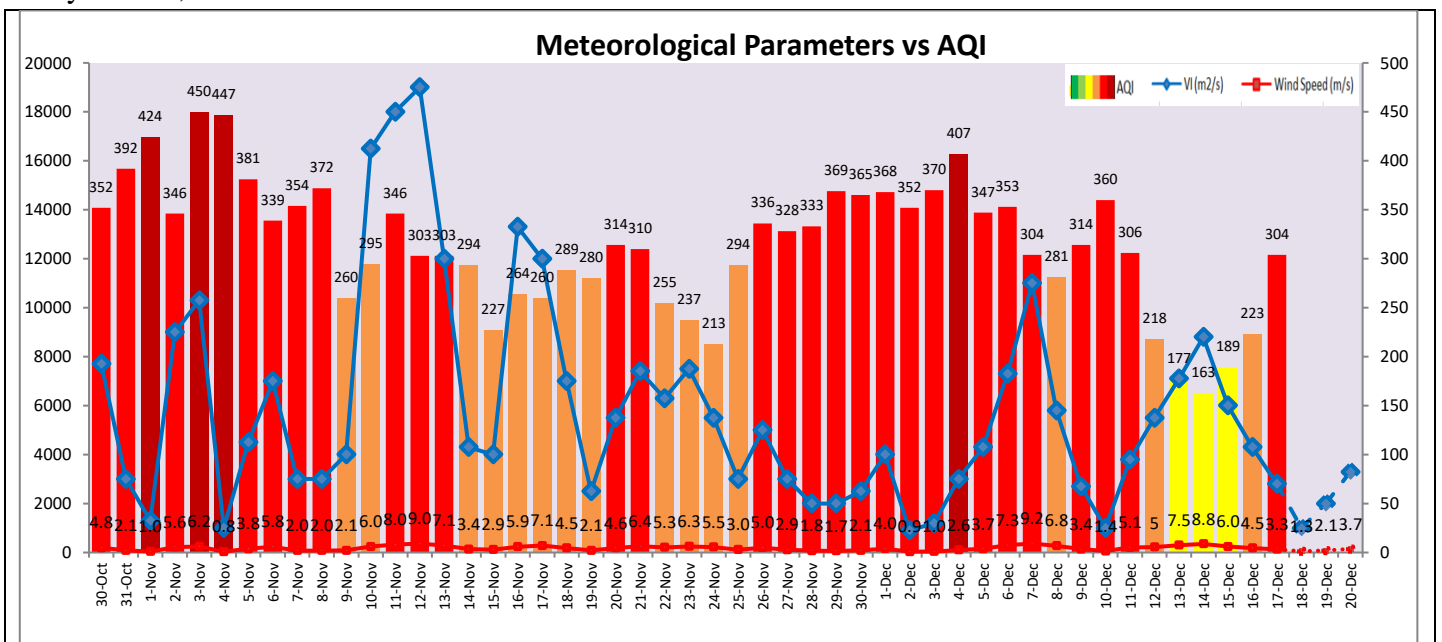
	Dec 18, 2022		Dec 19, 2022- Dec 20, 2022	
	Concentration	AQI Category	Concentration	AQI Category
PM ₁₀	262	Poor	286	Poor
PM _{2.5}	162	Very Poor	176	Very Poor

Wind Forecast for Delhi:

	Wind speed (at surface) in km/h		Wind speed (at 900 m) in km/h	Wind Direction	
	As per IMD (range)	As per windy.com (at 16:00 hrs.)	As per windy.com (at 16:00hrs)	As per IMD	As per windy.com at 900m
Dec 18, 2022	Upto 04	08	16	NW	NW
Dec 19, 2022	04	09	16	W/NW	NW
Dec 20, 2022	04-06	08	11	NW	NW

IMD Alert for Tomorrow (18.12.2022):

The air quality is likely to remain in Very Poor category from 18.12.2022 to 20.12.2022. The predominant surface wind is likely to be coming from Northwest directions in Delhi with wind speed 04 kmph during daytime, calm in night, mainly clear sky and mist/shallow fog in the morning tomorrow. Ventilation index is likely to be 1,000 m²/s.



Hotspots for Today

City	Station Name	AQI value	Air Quality	Prominent Pollutant
Delhi	Shadipur, Delhi - CPCB	375	Very Poor	PM _{2.5}
	Anand Vihar, Delhi - DPCC	372	Very Poor	PM _{2.5}
	NSIT Dwarka, Delhi - CPCB	368	Very Poor	PM _{2.5}
	Jahangirpuri, Delhi - DPCC	362	Very Poor	PM _{2.5}
	Vivek Vihar, Delhi - DPCC	352	Very Poor	PM _{2.5}
Faridabad	Sector 11, Faridabad - HSPCB	266	Poor	PM _{2.5}
	New Industrial Town, Faridabad - HSPCB	263	Poor	PM ₁₀
Gurugram	Sector-51, Gurugram - HSPCB	346	Very Poor	PM _{2.5}
	Teri Gram, Gurugram - HSPCB	296	Poor	PM _{2.5}
Ghaziabad	Vasundhara, Ghaziabad - UPPCB	326	Very Poor	PM ₁₀
Greater Noida	Knowledge Park - V, Greater Noida - UPPCB	312	Very Poor	PM ₁₀
Noida	Sector - 62, Noida - IMD	342	Very Poor	PM _{2.5}
	Sector-116, Noida - UPPCB	306	Very Poor	PM _{2.5}