



Central Pollution Control Board

Air Quality Status for Delhi & NCR

Dated – November 17, 2022



Current Air Quality Status:

Air Quality Index (AQI) (Average of past 24 hours)

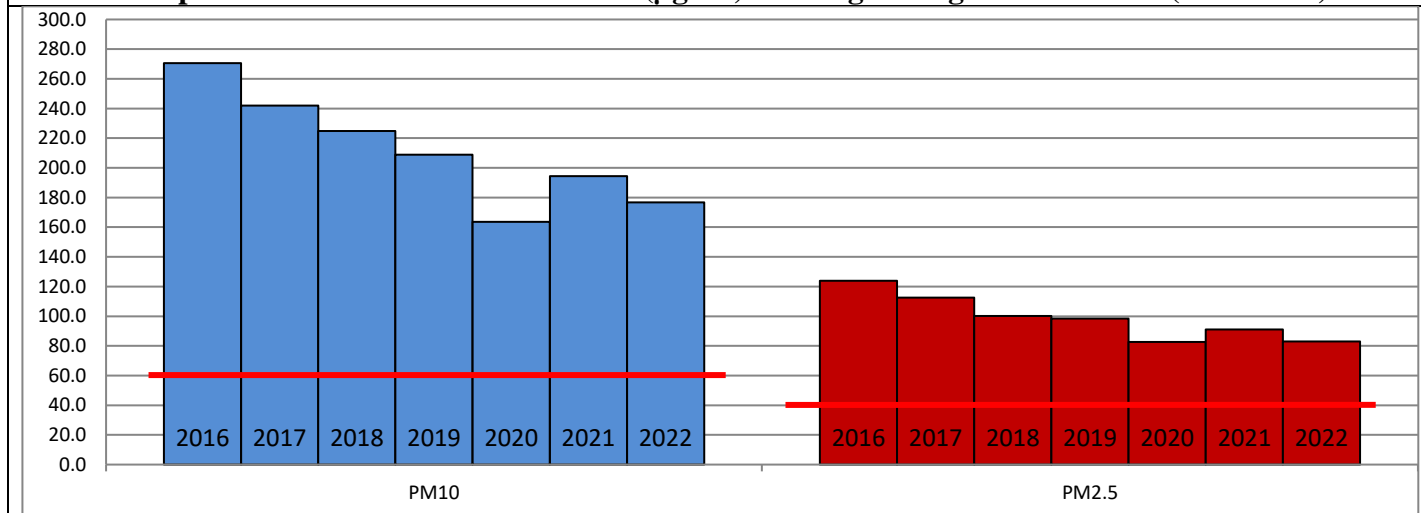
	Air Quality	AQI Value	Prominent Pollutant
Delhi	Poor	260 ↓	PM _{2.5}
Faridabad	Poor	230 ↓	PM _{2.5}
Ghaziabad	Moderate	186 ↓	PM _{2.5}
Greater Noida	Moderate	194 ↓	PM ₁₀ , PM _{2.5}
Gurugram	Poor	223 ↓	PM _{2.5}
Noida	Moderate	199 ↓	PM _{2.5}

*Data available for 36 stations in Delhi today. # ↓ ↑ arrows indicate a decrease/increase as compared to the value on the previous day.

Comparative status of AQI - Delhi from 01 January to 17 November 2016-2022

Category	Year	2016	2017	2018	2019	2020	2021	2022	2016	2017	2018	2019	2020	2021	2022
	No. of days	310	321	321	321	322	321	321							
Good (0–50)		0	2	0	2	5	1	3							
Satisfactory (51–100)		24	45	53	58	95	81	65	110	150	158	175	225	197	160
Moderate (101–200)		86	103	105	115	125	115	92							
Poor (201–300)		116	102	107	91	57	69	121							
Very Poor (301–400)		66	61	44	39	30	41	36	200	171	163	146	97	124	161
Severe (>401)		18	8	12	16	10	14	4							

Comparative status of PM₁₀ and PM_{2.5} (µg/m³) running average – Till Nov 16 (2016-2022)



Hotspots for Today:

*Details given overleaf

Delhi	NSIT Dwarka, Shadipur, Bawana, Mundka, Burari Crosssing	Ghaziabad	Loni, Vasundhara
Faridabad	Sector- 11, Sector-16A	Greater Noida	Knowledge Park-V
Gurugram	Sector-51, NISE Gwal Pahari	Noida	Sector – 62, Sector-116

Forecast by IITM (Delhi):

	Nov 18, 2022		Nov 19, 2022- Nov 20, 2022	
	Concentration	AQI Category	Concentration	AQI Category
PM ₁₀	229	Moderate	270	Poor
PM _{2.5}	126	Very Poor	149	Very Poor

Wind Forecast for Delhi:

	Wind speed (at surface) in km/h		Wind speed (at 900 m) in km/h	Wind Direction	
	As per IMD (range)	As per windy.com (at 16:00 hrs.)	As per windy.com (at 16:00hrs)	As per IMD	As per windy.com at 900m
Nov 18, 2022	04-10	10	20	VAR	NW
Nov 19, 2022	04-08	09	11	NW	N
Nov 20, 2022	10	09	36	NW	NW

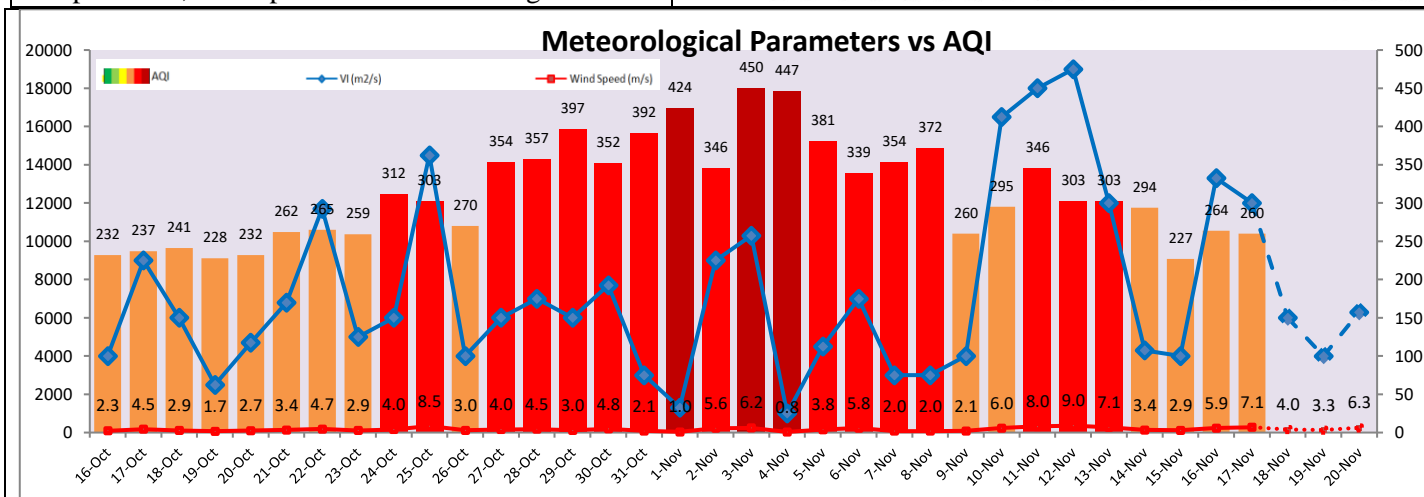
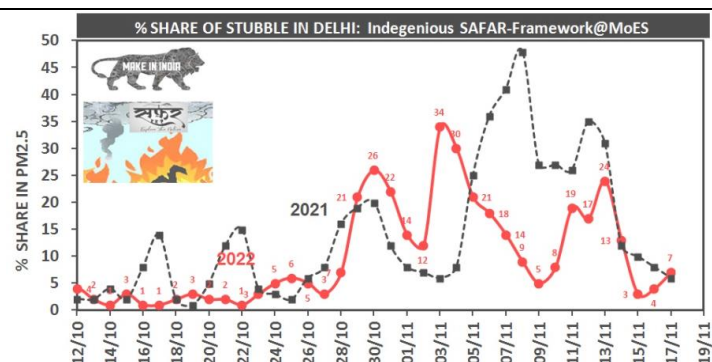
IMD Alert for Tomorrow (18.11.2022):

The air quality is likely to deteriorate but remain in upper end of Poor category on 18.11.2022. The predominant surface wind is likely to be coming from variable direction in Delhi with wind speed 04-10 kmph, mainly clear sky and mist in the morning tomorrow. Ventilation index is likely to be 6,000 m²/s.

Active Fire Events (AFE):

Date	Punjab		Haryana	
	Nos. on the day	Total since September 15	Nos. on the day	Total since September 15
16.11.2022	1358	46822	84	3233
16.11.2021	1757	68922	269	5993

* As per IITM, the impact of stubble burning is ~07%.



Hotspots for Today

City	Station Name	AQI value	Air Quality	Prominent Pollutant
Delhi	NSIT Dwarka, Delhi - CPCB	322	Very Poor	PM _{2.5}
	Burari Crossing, Delhi - IMD	320	Very Poor	PM _{2.5}
	Shadipur, Delhi - CPCB	302	Very Poor	PM _{2.5}
	Bawana, Delhi - DPCC	288	Poor	PM _{2.5}
	Mundka, Delhi - DPCC	283	Poor	PM _{2.5}
Faridabad	Sector- 16A, Faridabad - HSPCB	245	Poor	PM _{2.5}
	Sector 11, Faridabad - HSPCB	242	Poor	PM _{2.5}
Gurugram	Sector-51, Gurugram - HSPCB	251	Poor	PM _{2.5}
	NISE Gwal Pahari, Gurugram - IMD	234	Poor	PM _{2.5}
Ghaziabad	Vasundhara, Ghaziabad - UPPCB	227	Poor	PM _{2.5}
	Loni, Ghaziabad - UPPCB	187	Moderate	PM _{2.5}
Greater Noida	Knowledge Park - V, Greater Noida - UPPCB	199	Moderate	PM ₁₀
Noida	Sector - 62, Noida - IMD	255	Poor	PM _{2.5}
	Sector-116, Noida - UPPCB	206	Poor	PM _{2.5}