



Central Pollution Control Board

Air Quality Status for Delhi & NCR

Dated – October 17, 2022



Current Air Quality Status:

Air Quality Index (AQI) (Average of past 24 hours)

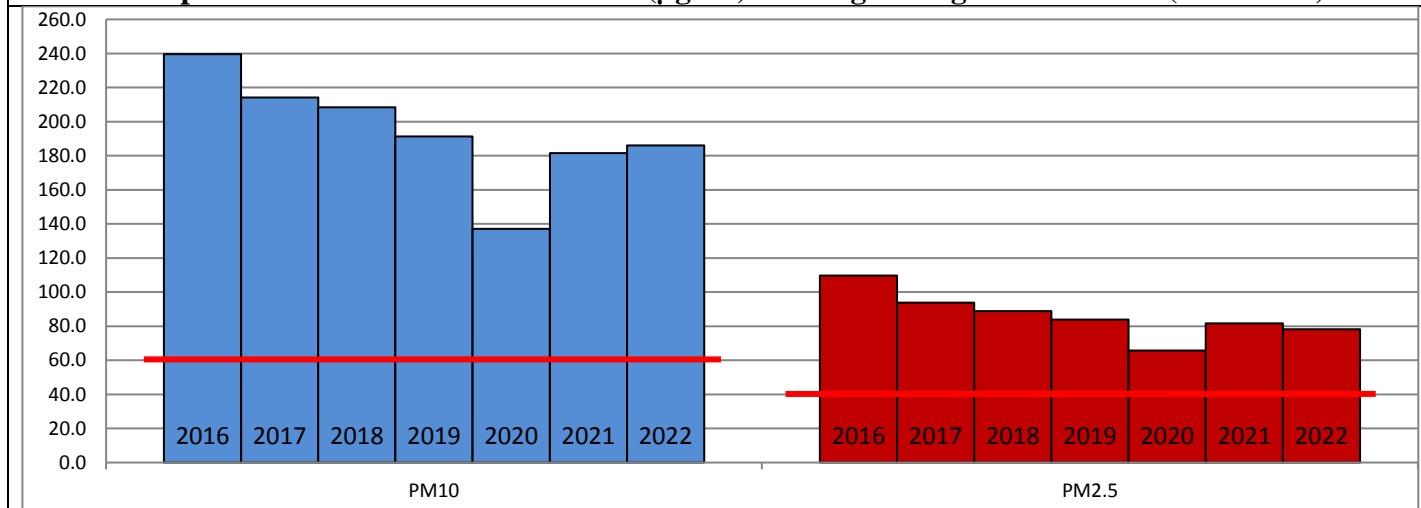
	Air Quality	AQI Value	Prominent Pollutant
Delhi	Poor	237 ↑	PM ₁₀ , PM _{2.5}
Faridabad	Poor	286 ↑	PM ₁₀ , O ₃
Ghaziabad	Poor	247 ↓	PM ₁₀
Greater Noida	Poor	254 ↓	PM ₁₀ , PM _{2.5}
Gurugram	Poor	232 ↑	PM _{2.5}
Noida	Poor	254 ↓	PM ₁₀ , O ₃

*Data available for 35 stations in Delhi today. # ↓ ↑ arrows indicate a decrease/increase as compared to the value on the previous day.

Comparative status of AQI - Delhi from 01 January to 17 October 2016-2022

Category	Year	2016	2017	2018	2019	2020	2021	2022	2016	2017	2018	2019	2020	2021	2022
	No. of days	279	290	290	290	291	290	290							
Good (0–50)		0	2	0	2	5	0	3							
Satisfactory (51–100)		24	45	53	58	95	79	65	110	150	157	174	224	189	160
Moderate (101–200)		86	103	104	114	124	110	92							
Poor (201–300)		109	102	98	81	49	62	108							
Very Poor (301–400)		54	38	29	28	16	33	21	169	140	133	116	67	101	130
Severe (>401)		6	0	6	7	2	6	1							

Comparative status of PM₁₀ and PM_{2.5} (µg/m³) running average – Till Oct 12 (2016-2022)



Hotspots for Today:

*Details given overleaf

Delhi	Anand Vihar, Jahangirpuri, Dwarka-Sector 8, Shadipur, North Campus	Ghaziabad	Indirapuram, Vasundhara
Faridabad	Sector 11, Sector- 16A	Greater Noida	Knowledge Park - III
Gurugram	Sector-51	Noida	Sector-116, Sector-1

Forecast by IITM (Delhi):

	Oct 18, 2022		Oct 19, 2022- Oct 20, 2022	
	Concentration	AQI Category	Concentration	AQI Category
PM ₁₀	234	Moderate	255	Poor
PM _{2.5}	113	Poor	123	Very Poor

Wind Forecast for Delhi:

	Wind speed (at surface) in km/h		Wind speed (at 900 m) in km/h	Wind Direction	
	As per IMD (range)	As per windy.com (at 16:00 hrs.)	As per windy.com (at 16:00hrs)	As per IMD	As per windy.com at 900m
Oct 18, 2022	04-10	03	17	N/NW/N	NW
Oct 19, 2022	05-12	03	16	E/ESE	W
Oct 20, 2022	04-10	05	10	E	W

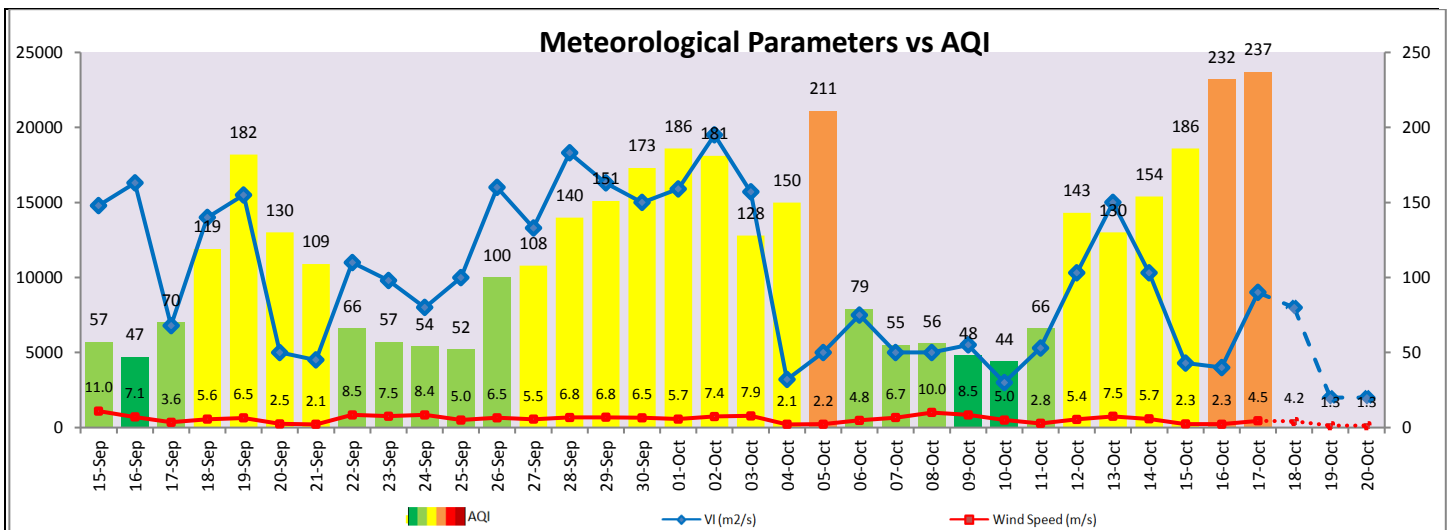
IMD Alert for Tomorrow (18.10.2022):

The overall air quality over Delhi is likely to remain in Poor category on 18.10.2022. The predominant surface wind is likely to be coming from Northwest/West direction in Delhi with wind speed 04-10 kmph and mainly clear sky tomorrow. Ventilation index is likely to be 8,000 m²/s.

Active Fire Events (AFE):

Date	Punjab		Haryana	
	Nos. on the day	Total since September 15	Nos. on the day	Total since September 15
17.10.2022	403	1847	86	330
17.10.2021	14	2389	0	1026

* As per IMD, the impact of stubble burning is negligible.



Hotspots for Today

City	Station Name	AQI value	Air Quality	Prominent Pollutant
Delhi	Anand Vihar, Delhi - DPCC	424	Severe	PM ₁₀
	Jahangirpuri, Delhi - DPCC	312	Very Poor	PM ₁₀
	Dwarka-Sector 8, Delhi - DPCC	310	Very Poor	PM _{2.5}
	Shadipur, Delhi - CPCB	295	Poor	PM _{2.5}
	North Campus, DU, Delhi - IMD	294	Poor	PM _{2.5}
Faridabad	Sector 11, Faridabad - HSPCB	323	Very Poor	PM ₁₀
Gurugram	Sector-51, Gurugram - HSPCB	312	Very Poor	PM _{2.5}
Ghaziabad	Indirapuram, Ghaziabad - UPPCB	278	Poor	PM ₁₀
Greater Noida	Knowledge Park - III, Greater Noida - UPPCB	256	Poor	PM _{2.5}
Noida	Sector-116, Noida - UPPCB	286	Poor	PM ₁₀
	Sector-1, Noida - UPPCB	266	Poor	PM ₁₀