



Central Pollution Control Board

Air Quality Status for Delhi & NCR

Dated – May 17, 2022



Current Air Quality Status:

Air Quality Index (AQI) (Average of past 24 hours)

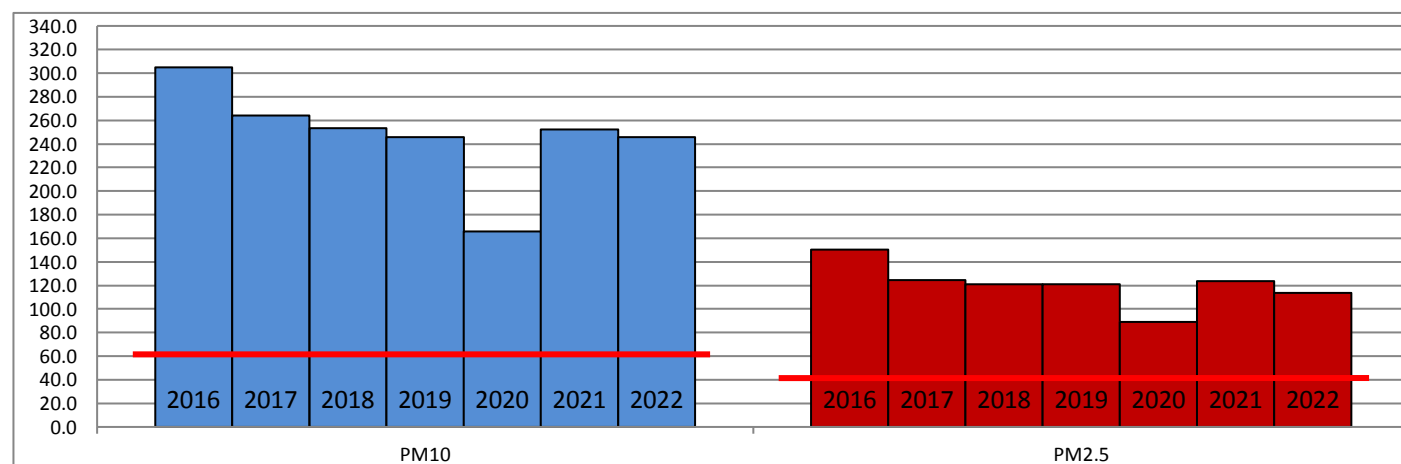
	Air Quality	AQI Value	Prominent Pollutant
Delhi	Poor	239 ↓	PM _{2.5} , PM ₁₀
Faridabad	Poor	209 ↓	PM ₁₀
Ghaziabad	Poor	226 ↓	PM ₁₀
Greater Noida	Poor	248 ↓	PM ₁₀
Gurugram	Poor	247 ↓	PM _{2.5} , PM ₁₀
Noida	Poor	264 ↓	PM ₁₀ , O ₃

*Data available for 33 stations in Delhi today. # ↓ ↑ arrows indicate increase/decrease as compared to value on the previous day

Comparative status of AQI - Delhi from 01 January to 17 May 2016-2022

Category	Year	2016	2017	2018	2019	2020	2021	2022	2016	2017	2018	2019	2020	2021	2022
	No. of days	134	137	137	137	138	137	137							
Good (0–50)		0	0	0	0	1	0	0							
Satisfactory (51–100)		0	0	1	2	27	0	3	11	32	42	49	86	46	33
Moderate (101–200)		11	32	41	47	58	46	30							
Poor (201–300)		68	70	66	55	35	53	85							
Very Poor (301–400)		49	35	26	26	15	32	18	123	105	95	88	52	91	104
Severe (>401)		6	0	3	7	2	6	1							

Comparative status of PM_{2.5} and PM₁₀ (µg/m³) running average – Till May 16 (2016-2022)



Hotspots for Today:

*Details given overleaf

Delhi	Mundka, Dwarka-Sector 8, Narela, Vivek Vihar, Bawana	Gurugram	NISE Gwal Pahari, Teri Gram
Faridabad	Sector 30	Greater Noida	Knowledge Park - III
Ghaziabad	Loni, Vasundhara	Noida	Sector - 125, Sector-116

Forecast by IITM:

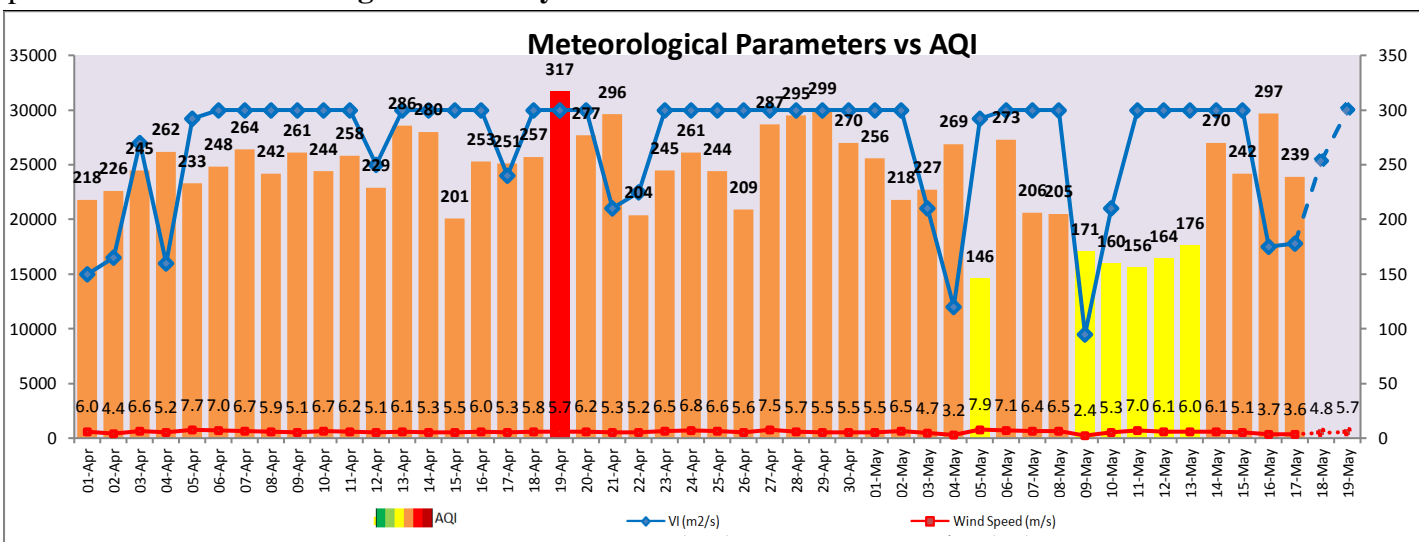
Parameters	May 18, 2022		May 19, 2022- May 20, 2022	
	Concentration	AQI Category	Concentration	AQI Category
PM ₁₀	281	Poor	332	Poor
PM _{2.5}	78	Moderate	92	Poor

Wind Forecast for Delhi:

	Wind speed (at surface) in km/h		Wind speed (at 900 m) in km/h	Wind Direction	
	As per IMD (at 17:30 hrs.)	As per windy.com (at 16:00 hrs.)	As per windy.com (at 16:00hrs)	As per IMD (at 17:30hrs.)	As per windy.com at 900m
May 18, 2022	10	10	12	WNW	W
May 19, 2022	30	19	31	WNW	NW
May 20, 2022	25	20	26	WSW	NE

IMD Alert for Tomorrow (18.05.2022):

The air quality is likely to remain in Poor category on 18.05.2022 and 19.05.2022. The predominant surface wind is likely to be coming from Northwest direction of Delhi with wind speed 06-15 kmph and mainly clear sky tomorrow. Ventilation index is likely to be more than 25,300 m²/s tomorrow. **Strong winds favourable for raising dust are likely over parts of Rajasthan, Gujarat, UP and NCR for next two days.** Long range transported dust will also impact **air quality over parts of Rajasthan, NCR, Gujarat, Madhya Pradesh, and parts of Maharashtra during next two days.**



Hotspots for Today

City	Station Name	AQI value	Air Quality	Prominent Pollutant
Delhi	Mundka, Delhi - DPCC	289	Poor	PM ₁₀
	Dwarka-Sector 8, Delhi - DPCC	281	Poor	PM ₁₀
	Narela, Delhi - DPCC	279	Poor	PM ₁₀
	Vivek Vihar, Delhi - DPCC	278	Poor	PM ₁₀
	Bawana, Delhi - DPCC	276	Poor	PM ₁₀
Faridabad	Sector 30, Faridabad - HSPCB	233	Poor	PM ₁₀
Gurugram	NISE Gwal Pahari, Gurugram - IMD	283	Poor	PM ₁₀
	Teri Gram, Gurugram - HSPCB	277	Poor	PM ₁₀
Ghaziabad	Loni, Ghaziabad - UPPCB	287	Poor	PM ₁₀
	Vasundhara, Ghaziabad - UPPCB	272	Poor	PM ₁₀
Greater Noida	Knowledge Park - III, Greater Noida - UPPCB	262	Poor	PM ₁₀
Noida	Sector - 125, Noida - UPPCB	293	Poor	PM ₁₀
	Sector-116, Noida - UPPCB	274	Poor	O ₃