



Central Pollution Control Board

Air Quality Status for Delhi & NCR

Dated – February 17, 2022



Current Air Quality Status:

Air Quality Index (AQI) (Average of past 24 hours)

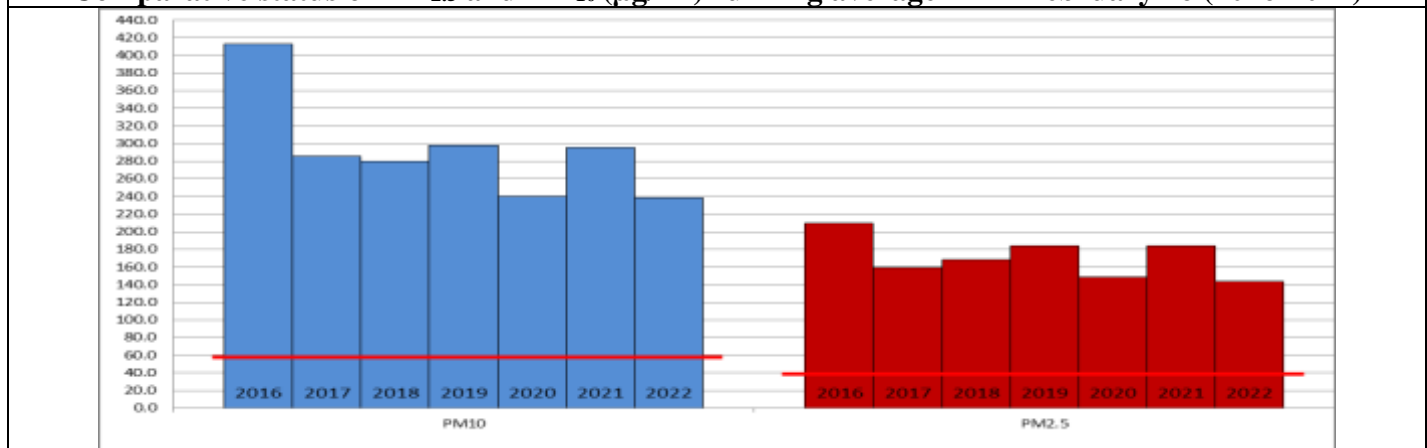
	Air Quality	AQI Value	Prominent Pollutant
Delhi	Poor	241↓	PM ₁₀ , PM _{2.5}
Faridabad	Very Poor	258↓	PM _{2.5}
Ghaziabad	Poor	262↓	PM ₁₀ , PM _{2.5}
Greater Noida	Poor	210↓	PM _{2.5}
Gurugram	Poor	287↑	PM _{2.5}
Noida	Poor	208↓	PM ₁₀ , PM _{2.5}

*Data available for 37 stations in Delhi today. # ↓ ↑ arrows indicate increase/decrease as compared to value on the previous day

Comparative status of AQI - Delhi from 01 January to 17 February 2016-2022

Category	Year	2016	2017	2018	2019	2020	2021	2022	2016	2017	2018	2019	2020	2021	2022
	No. of days	48	48	48	48	48	48	48							
Good (0–50)		0	0	0	0	0	0	0							
Satisfactory (51–100)		0	0	0	0	0	0	2	0	3	4	5	5	4	9
Moderate (101–200)		0	3	4	5	5	4	7							
Poor (201–300)		10	21	20	15	26	11	22							
Very Poor (301–400)		32	24	21	21	15	27	16	48	45	44	43	43	44	39
Severe (>401)		6	0	3	7	2	6	1							

Comparative status of PM_{2.5} and PM₁₀ (µg/m³) running average – Till February 16 (2016-2022)



Hotspots for Today:

*Details given overleaf

Delhi	Anand Vihar, NSIT Dwarka, Jahangirpuri, Narela, Nehru Nagar	Gurugram	Teri Gram, Sector-51
Faridabad	New Industrial Town	Greater Noida	Knowledge Park – III
Ghaziabad	Vasundhara, Loni	Noida	Sector -1, Sector - 125

Forecast by IITM:

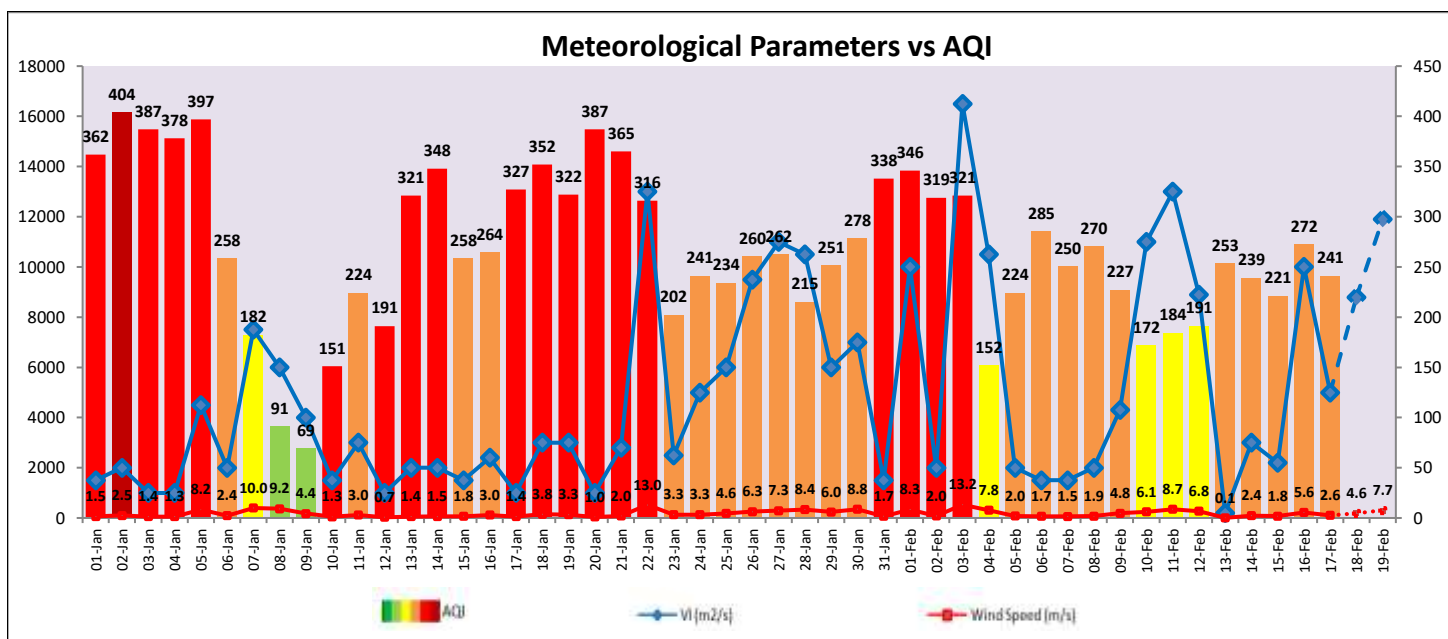
Parameters	February 18, 2022		February 19, 2022- February 20, 2022	
	Concentration	AQI Category	Concentration	AQI Category
PM ₁₀	223	Poor	234	Poor
PM _{2.5}	109	Very Poor	129	Very Poor

Wind Forecast for Delhi:

	Wind speed (at surface) in km/h		Wind speed (at 900 m) in km/h	Wind Direction	
	As per IMD (at 17:30 hrs.)	As per windy.com (at 16:00 hrs.)	As per windy.com (at 16:00hrs)	As per IMD (at 17:30hrs.)	As per windy.com at 900m
February 18, 2022	12	14	16	NW	NW
February 19, 2022	24	12	35	NW	NW
February 20, 2022	24	11	35	NW	NW

IMD Alert for Tomorrow (18.02.2022):

The air quality is likely to improve and remain in Poor to Moderate category on 18.02.2022. The predominant surface wind is likely to be calm during morning hours and coming from Northwest direction of Delhi with wind speed 04-12 kmph, mainly clear sky and mist in the morning tomorrow. The ventilation index is likely to be 8,800 m²/s.



Hotspots for Today

City	Station Name	AQI value	Air Quality	Prominent Pollutant
Delhi	Anand Vihar, Delhi - DPCC	324	Very Poor	PM ₁₀
	NSIT Dwarka, Delhi - CPCB	314	Very Poor	PM _{2.5}
	Jahangirpuri, Delhi - DPCC	306	Very Poor	PM _{2.5}
	Narela, Delhi - DPCC	301	Very Poor	PM _{2.5}
	Nehru Nagar, Delhi - DPCC	300	Poor	PM _{2.5}
Faridabad	New Industrial Town, Faridabad - HSPCB	264	Poor	PM _{2.5}
Gurugram	Teri Gram, Gurugram - HSPCB	320	Very Poor	PM _{2.5}
	Sector-51, Gurugram - HSPCB	291	Poor	PM _{2.5}
Ghaziabad	Loni, Ghaziabad - UPPCB	321	Very Poor	PM _{2.5}
	Vasundhara, Ghaziabad - UPPCB	274	Poor	PM _{2.5}
Greater Noida	Knowledge Park - III, Greater Noida - UPPCB	232	Poor	PM _{2.5}
Noida	Sector - 125, Noida - UPPCB	241	Poor	PM _{2.5}
	Sector-1, Noida - UPPCB	221	Poor	PM _{2.5}