



Central Pollution Control Board

Air Quality Status for Delhi & NCR

Dated – January 17, 2022



Current Air Quality Status:

Air Quality Index (AQI) (Average of past 24 hours)

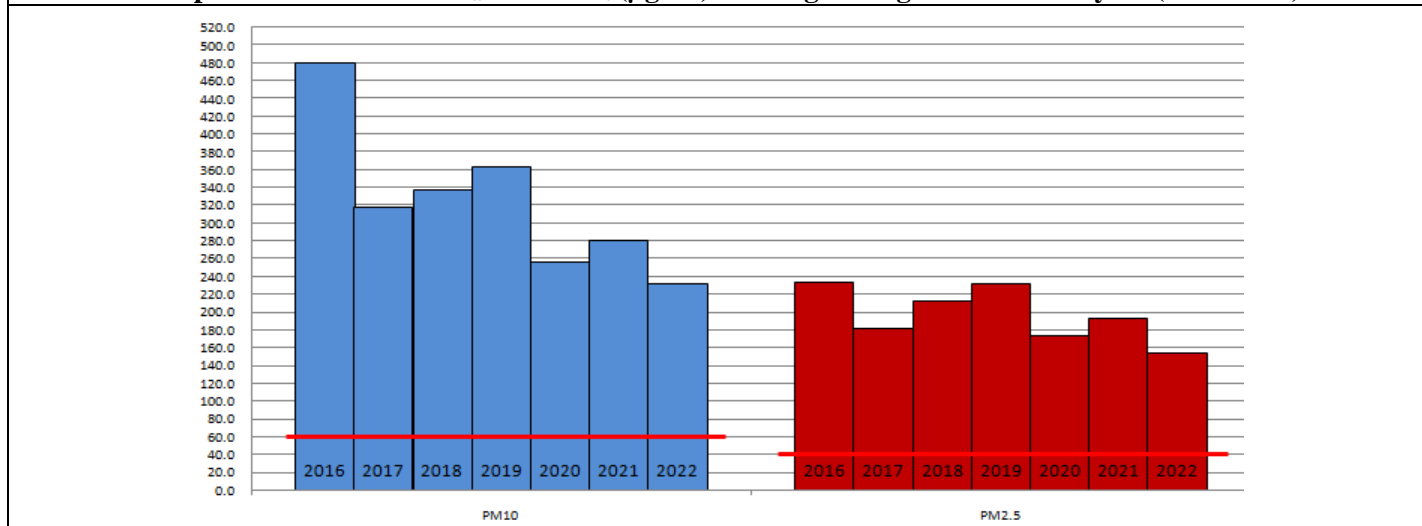
	Air Quality	AQI Value	Prominent Pollutant
Delhi	Very Poor	327↑	PM _{2.5}
Faridabad	Very Poor	332↑	PM _{2.5}
Ghaziabad	Very Poor	356↑	PM _{2.5}
Greater Noida	Very Poor	309↑	PM _{2.5}
Gurugram	Poor	219↑	PM ₁₀ , PM _{2.5}
Noida	Very Poor	327↑	PM _{2.5}

*Data available for 32 stations in Delhi today. # ↑ ↓ arrows indicate increase/decrease as compared to value on the previous day

Comparative status of AQI - Delhi from 01 January to 17 January 2016-2022

Category	Year	2016	2017	2018	2019	2020	2021	2022	2016	2017	2018	2019	2020	2021	2022
		No. of days	17	17	17	17	17	17	17						
Good (0-50)		0	0	0	0	0	0	0							
Satisfactory (51-100)		0	0	0	0	0	0	2	0	0	0	0	0	2	5
Moderate (101-200)		0	0	0	0	0	2	3							
Poor (201-300)		2	5	3	4	9	6	4							
Very Poor (301-400)		12	12	12	7	6	4	7	17	17	17	17	17	15	12
Severe (>401)		3	0	2	6	2	5	1							

Comparative status of PM_{2.5} and PM₁₀ (µg/m³) running average – Till January 16 (2016-2022)



Hotspots for Today:

*Details given overleaf

Delhi	Anand Vihar, ITO, Patparganj, Vivek Vihar, Punjabi Bagh	Gurugram	Sector-51, Teri Gram
Faridabad	New Industrial Area, Sector-30	Greater Noida	Knowledge Park – V
Ghaziabad	Vasundhara, Loni	Noida	Sector -116, Sector - 1

Forecast by IITM:

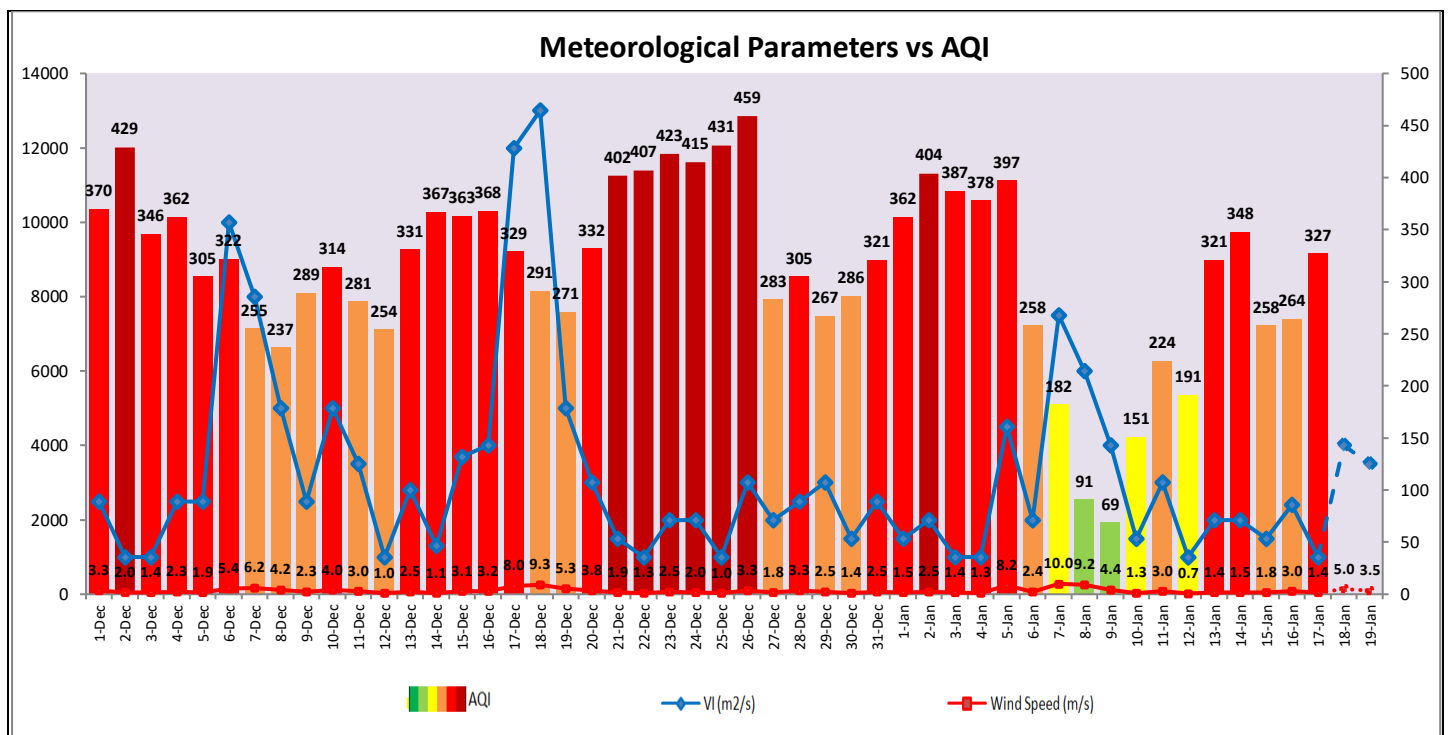
Parameters	January 18, 2022		January 19, 2022-January 20, 2022	
	Concentration	AQI Category	Concentration	AQI Category
PM ₁₀	253	Poor	299	Poor
PM _{2.5}	143	Very Poor	169	Very Poor

▪ **Wind Forecast for Delhi:**

	Wind speed (at surface) in km/h		Wind speed (at 900 m) in km/h	Wind Direction	
	As per IMD (at 17:30 hrs.)	As per windy.com (at 16:00 hrs.)	As per windy.com (at 16:00hrs)	As per IMD (at 17:30hrs.)	As per windy.com at 900m
January 18, 2022	06	07	23	NW	NW
January 19, 2022	-	05	11	CALM	NW
January 20, 2022	04	01	10	NE	NE

▪ **IMD Alert for Tomorrow (18.01.2022):**

The air quality over Delhi-NCT is likely to remain in lower end of Very Poor category on 18.01.2022 and improve marginally and remain in Poor category on 19.01.2022. The predominant surface wind is likely to be coming from Northwest direction of Delhi having wind speed 06-10 kmph with partly cloudy sky and shallow fog in the morning. Ventilation index is likely to be 4,000 m²/s.



▪ **Hotspots for Today**

City	Station Name	AQI value	Air Quality	Prominent Pollutant
Delhi	ITO, Delhi - CPCB	403	Severe	PM _{2.5}
	Anand Vihar, Delhi - DPCC	397	Very Poor	PM _{2.5}
	Patparganj, Delhi - DPCC	383	Very Poor	PM _{2.5}
	Vivek Vihar, Delhi - DPCC	375	Very Poor	PM _{2.5}
	Punjabi Bagh, Delhi - DPCC	370	Very Poor	PM _{2.5}
Faridabad	New Industrial Town, Faridabad - HSPCB	377	Very Poor	PM _{2.5}
	Sector 30, Faridabad - HSPCB	337	Very Poor	PM _{2.5}
Gurugram	Sector-51, Gurugram - HSPCB	253	Poor	PM ₁₀
	Teri Gram, Gurugram - HSPCB	223	Poor	PM _{2.5}
Ghaziabad	Loni, Ghaziabad - UPPCB	403	Severe	PM _{2.5}
	Vasundhara, Ghaziabad - UPPCB	344	Very Poor	PM _{2.5}
Greater Noida	Knowledge Park - V, Greater Noida - UPPCB	308	Very Poor	PM _{2.5}
Noida	Sector-1, Noida - UPPCB	347	Very Poor	PM _{2.5}
	Sector-116, Noida - UPPCB	325	Very Poor	PM _{2.5}