



Central Pollution Control Board

Air Quality Status for Delhi & NCR

Dated – November 16, 2022



Current Air Quality Status:

Air Quality Index (AQI) (Average of past 24 hours)

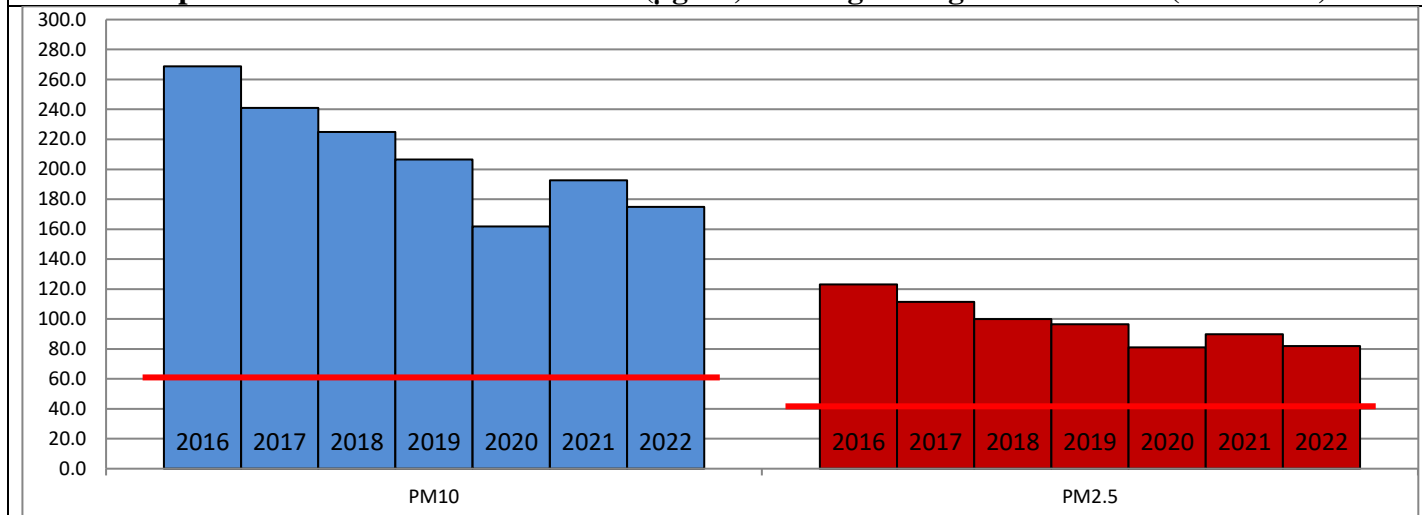
	Air Quality	AQI Value	Prominent Pollutant
Delhi	Poor	264 ↓	PM _{2.5}
Faridabad	Poor	266 ↑	PM _{2.5}
Ghaziabad	Poor	218 ↑	PM _{2.5}
Greater Noida	Poor	234 ↑	PM ₁₀
Gurugram	Poor	248 ↑	PM _{2.5}
Noida	Poor	220 ↑	PM _{2.5}

*Data available for 36 stations in Delhi today. # ↑ ↓ arrows indicate a decrease/increase as compared to the value on the previous day.

Comparative status of AQI - Delhi from 01 January to 16 November 2016-2022

Category	Year	2016	2017	2018	2019	2020	2021	2022	2016	2017	2018	2019	2020	2021	2022
	No. of days	309	320	320	320	321	320	320							
Good (0–50)		0	2	0	2	5	1	3							
Satisfactory (51–100)		24	45	53	58	95	81	65	110	150	158	175	224	197	160
Moderate (101–200)		86	103	105	115	124	115	92							
Poor (201–300)		116	102	106	90	57	69	120							
Very Poor (301–400)		65	60	44	39	30	40	36	199	170	162	145	97	123	160
Severe (>401)		18	8	12	16	10	14	4							

Comparative status of PM₁₀ and PM_{2.5} (µg/m³) running average – Till Nov 13 (2016-2022)



Hotspots for Today:

*Details given overleaf

Delhi	NSIT Dwarka, Shadipur, Jahangirpuri, Wazirpur, Nehru Nagar	Ghaziabad	Loni, Vasundhara
Faridabad	Sector- 11, Sector-16A	Greater Noida	Knowledge Park-III
Gurugram	Sector-51, Vikas Sadan	Noida	Sector – 62, Sector-116

Forecast by IITM (Delhi):

	Nov 17, 2022		Nov 18, 2022- Nov 19, 2022	
	Concentration	AQI Category	Concentration	AQI Category
PM ₁₀	233	Moderate	275	Poor
PM _{2.5}	123	Very Poor	145	Very Poor

Wind Forecast for Delhi:

	Wind speed (at surface) in km/h		Wind speed (at 900 m) in km/h	Wind Direction	
	As per IMD (range)	As per windy.com (at 16:00 hrs.)	As per windy.com (at 16:00hrs)	As per IMD	As per windy.com at 900m
Nov 17, 2022	08-18	09	33	NW	NW
Nov 18, 2022	02-14	10	18	VAR	NW
Nov 19, 2022	06-08	07	11	NW	NW

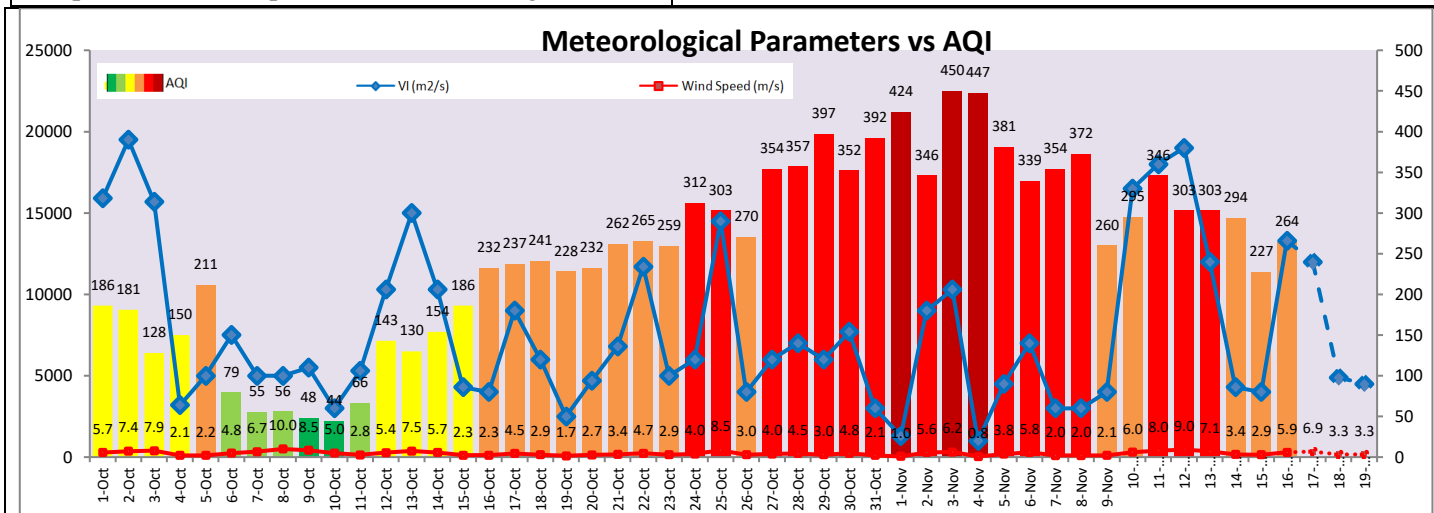
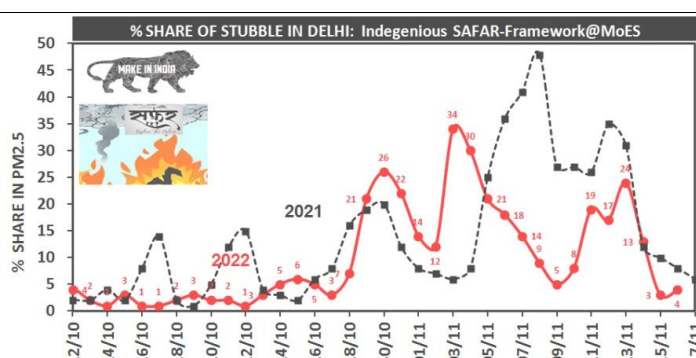
IMD Alert for Tomorrow (17.11.2022):

The overall air quality over Delhi is likely to remain in Poor category on 17.11.2022. The predominant surface wind is likely to be coming from Northwest direction in Delhi with wind speed 08-18 kmph, mainly clear sky and mist in the morning tomorrow. Ventilation index is likely to be 12,000 m²/s.

Active Fire Events (AFE):

Date	Punjab		Haryana	
	Nos. on the day	Total since September 15	Nos. on the day	Total since September 15
16.11.2022	1358	46822	84	3233
16.11.2021	1757	68922	269	5993

* As per IITM, the impact of stubble burning is ~04%.



Hotspots for Today

City	Station Name	AQI value	Air Quality	Prominent Pollutant
Delhi	Shadipur, Delhi - CPCB	313	Very Poor	PM _{2.5}
	Jahangirpuri, Delhi - DPCC	308	Very Poor	PM _{2.5}
	NSIT Dwarka, Delhi - CPCB	304	Very Poor	PM _{2.5}
	Wazirpur, Delhi - DPCC	298	Poor	PM _{2.5}
	Nehru Nagar, Delhi - DPCC	293	Poor	PM _{2.5}
Faridabad	Sector 11, Faridabad - HSPCB	290	Poor	PM _{2.5}
	Sector- 16A, Faridabad - HSPCB	275	Poor	PM _{2.5}
Gurugram	Sector-51, Gurugram - HSPCB	285	Poor	PM _{2.5}
	Vikas Sadan, Gurugram - HSPCB	251	Poor	PM _{2.5}
Ghaziabad	Vasundhara, Ghaziabad - UPPCB	265	Poor	PM _{2.5}
	Loni, Ghaziabad - UPPCB	221	Poor	PM _{2.5}
Greater Noida	Knowledge Park - III, Greater Noida - UPPCB	236	Poor	PM ₁₀
Noida	Sector - 62, Noida - IMD	262	Poor	PM _{2.5}
	Sector-116, Noida - UPPCB	226	Poor	PM _{2.5}