



Central Pollution Control Board

Air Quality Status for Delhi & NCR

Dated – November 16, 2021



Current Air Quality Status:

Air Quality Index (AQI) (Average of past 24 hours)

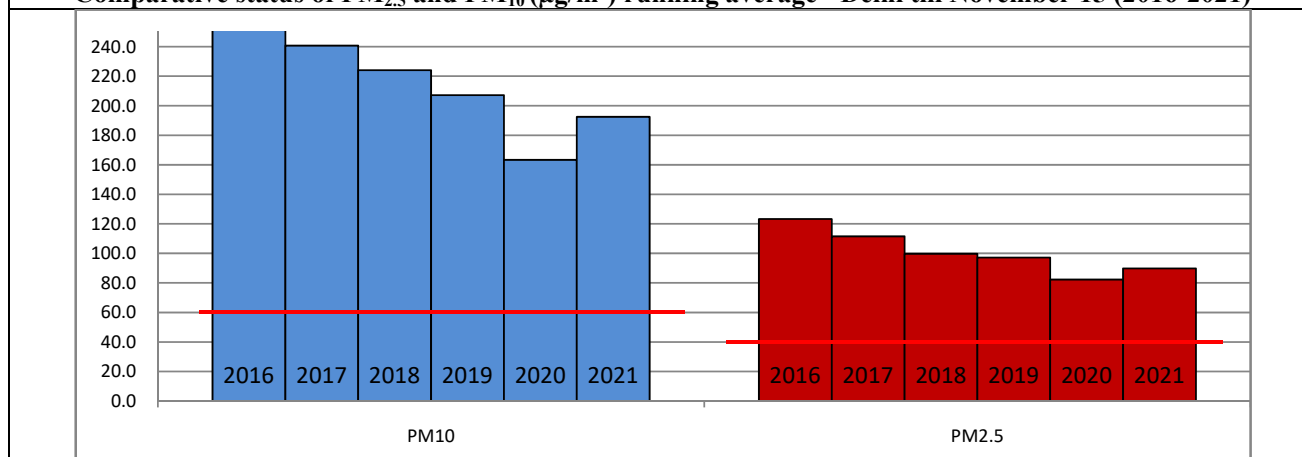
	Air Quality	AQI Value	Prominent Pollutant
Delhi	Severe	403 ↑	PM ₁₀ , PM _{2.5}
Faridabad	Very Poor	370 ↑	PM ₁₀ , PM _{2.5}
Ghaziabad	Very Poor	356 ↑	PM _{2.5}
Greater Noida	Very Poor	361 ↑	PM _{2.5}
Gurugram	Very Poor	369 ↑	PM _{2.5}
Noida	Very Poor	397 ↑	PM ₁₀ , PM _{2.5}

*Data available for 38 stations in Delhi today. # ↑ ↓ arrows indicate increase/decrease as compared to value on the previous day

Comparative status of AQI - Delhi from 01 January to 16 November 2016-2021

Category	Year	2016	2017	2018	2019	2020	2021	2016	2017	2018	2019	2020	2021
	No. of days	309	320	320	320	321	320						
Good (0–50)		0	2	0	2	5	1						
Satisfactory (51–100)		25	45	53	58	95	72	108	150	158	175	224	197
Moderate (101–200)		83	103	105	115	124	124						
Poor (201–300)		116	102	106	90	57	69						
Very Poor (301–400)		67	60	44	39	30	40	201	170	162	145	97	123
Severe (>401)		18	8	12	16	10	14						

Comparative status of PM_{2.5} and PM₁₀ (µg/m³) running average - Delhi till November 15 (2016-2021)



* The PM values are 24 hourly averages (6 am to 6 am)

Hotspots for Today:

*Details given overleaf

Delhi	Jahangirpuri, Vivek Vihar, Alipur, Anand Vihar, Narela	Gurugram	NISE Gwal Pahari, Teri Gram
Faridabad	Sector 11	Greater Noida	Knowledge Park - V
Ghaziabad	Indrapuram, Vasundhara	Noida	Sector – 62, Sector-116

Forecast by IITM:

Parameters	November 17, 2021		November 18, 2021– November 19, 2021	
	Concentration	AQI Category	Concentration	AQI Category
PM ₁₀	390	Poor	408	Very Poor
PM _{2.5}	238	Very Poor	249	Very Poor

▪ **Wind Forecast for Delhi:**

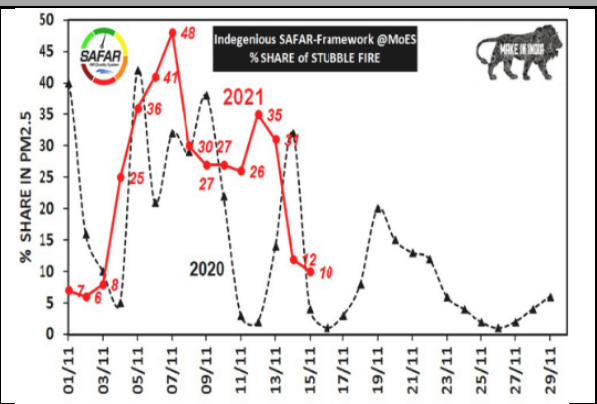
Dates	Wind speed (at surface) in km/h		Wind speed (at 900 m) in km/h	Wind Direction	
	As per IMD (at 17:30 hrs.)	As per windy.com (at 16:00 hrs.)	As per windy.com (at 16:00hrs)	As per IMD (at 17:30hrs.)	As per windy.com at 900m
November 17, 2021	08	02	04	N	E
November 18, 2021	04	05	06	ESE	NW
November 19, 2021	04	07	03	S	NW

▪ **IMD Alert for Tomorrow (17.11.2021):**

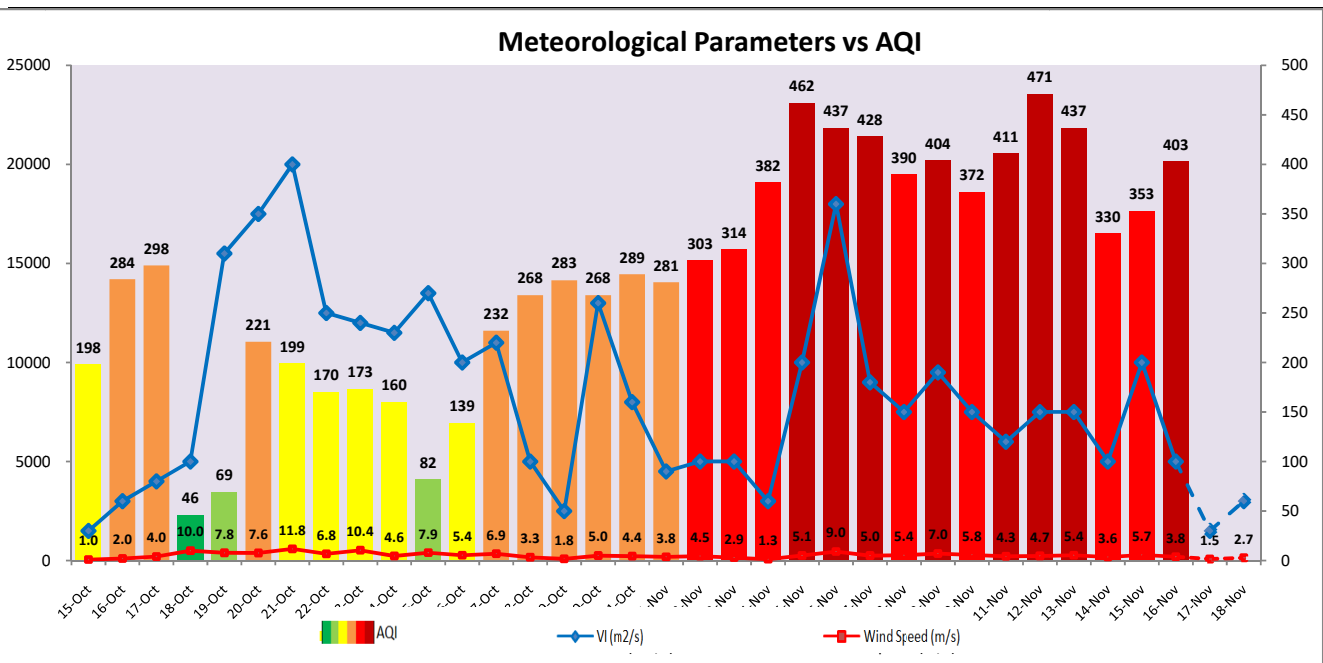
The air quality is likely to improve marginally but remain in Very poor category tomorrow. The predominant surface wind is likely to remain calm in the morning hours and coming from East direction of Delhi during daytime/evening with wind speed of 04 kmph, partly cloudy sky and mist/shallow fog in the morning. Ventilation index is likely to be 1,500 m²/s.

▪ **Active Fire Events (AFE)**

Date	Punjab		Haryana	
	Nos. on the day	Total since September 21	Nos. on the day	Total since September 21
15.11.2021	1761	67165	129	5724
15.11.2020	32	80090	31	3701



The contribution of biomass burning in PM_{2.5} concentration is likely to be negligible on 16.11.2021 and 17.11.2021 as winds are not favourable for transportation of pollutants.



▪ Hotspots for Today

City	Station Name	AQI value	Air Quality	Prominent Pollutant
Delhi	Jahangirpuri, Delhi - DPCC	454	Severe	PM ₁₀
	Vivek Vihar, Delhi - DPCC	437	Severe	PM ₁₀
	Alipur, Delhi - DPCC	436	Severe	PM _{2.5}
	Anand Vihar, Delhi - DPCC	436	Severe	PM ₁₀
	Narela, Delhi - DPCC	436	Severe	PM _{2.5}
Faridabad	Sector 11, Faridabad - HSPCB	392	Very Poor	PM _{2.5}
Gurugram	NISE Gwal Pahari, Gurugram - IMD	380	Very Poor	PM ₁₀
	Teri Gram, Gurugram - HSPCB	374	Very Poor	PM _{2.5}
Ghaziabad	Indirapuram, Ghaziabad - UPPCB	366	Very Poor	PM _{2.5}
	Vasundhara, Ghaziabad - UPPCB	361	Very Poor	PM _{2.5}
Greater Noida	Knowledge Park - V, Greater Noida - UPPCB	388	Very Poor	PM _{2.5}
Noida	Sector - 62, Noida - IMD	446	Severe	PM _{2.5}
	Sector-116, Noida - UPPCB	400	Very Poor	PM _{2.5}