



Central Pollution Control Board

Air Quality Status for Delhi & NCR

Dated – October 16, 2022



Current Air Quality Status:

Air Quality Index (AQI) (Average of past 24 hours)

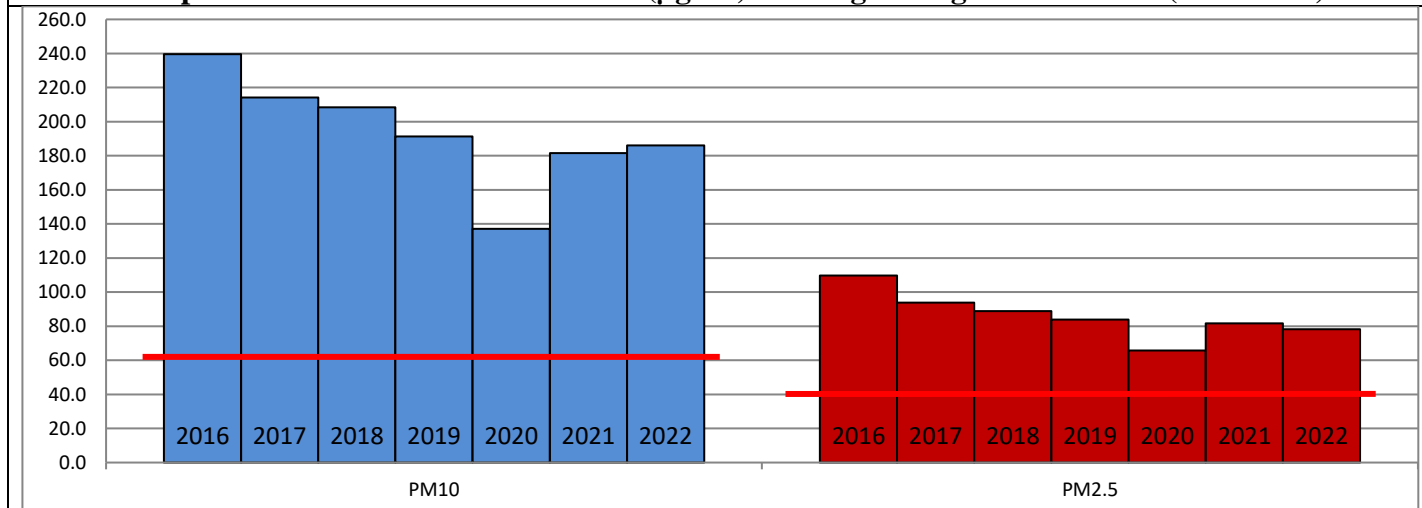
	Air Quality	AQI Value	Prominent Pollutant
Delhi	Poor	232 ↑	PM ₁₀ , PM _{2.5}
Faridabad	Poor	229 ↑	PM ₁₀ , PM _{2.5}
Ghaziabad	Poor	286 ↑	PM ₁₀ , PM _{2.5}
Greater Noida	Poor	258 ↑	PM ₁₀ , PM _{2.5}
Gurugram	Poor	231 ↑	PM _{2.5}
Noida	Poor	258 ↑	PM ₁₀ , PM _{2.5}

*Data available for 34 stations in Delhi today. # ↑ ↓ arrows indicate a decrease/increase as compared to the value on the previous day.

Comparative status of AQI - Delhi from 01 January to 16 October 2016-2022

Category	Year	2016	2017	2018	2019	2020	2021	2022	2016	2017	2018	2019	2020	2021	2022
	No. of days	278	289	289	289	290	289	289							
Good (0–50)		0	2	0	2	5	0	3							
Satisfactory (51–100)		24	45	53	58	95	79	65	110	150	157	174	224	189	160
Moderate (101–200)		86	103	104	114	124	110	92							
Poor (201–300)		108	102	98	80	48	61	107							
Very Poor (301–400)		54	37	28	28	16	33	21	168	139	132	115	66	100	129
Severe (>401)		6	0	6	7	2	6	1							

Comparative status of PM₁₀ and PM_{2.5} (µg/m³) running average – Till Oct 12 (2016-2022)



Hotspots for Today:

*Details given overleaf

Delhi	Anand Vihar, Shadipur, North Campus-DU, RK Puram, Mundka	Ghaziabad	Loni
Faridabad	Sector 11, New Industrial Town	Greater Noida	Knowledge Park - V
Gurugram	Sector-51	Noida	Sector-1, Sector - 116

Forecast by IITM (Delhi):

	Oct 17, 2022		Oct 18, 2022- Oct 19, 2022	
	Concentration	AQI Category	Concentration	AQI Category
PM ₁₀	224	Moderate	264	Poor
PM _{2.5}	100	Poor	118	Poor

Wind Forecast for Delhi:

	Wind speed (at surface) in km/h		Wind speed (at 900 m) in km/h	Wind Direction	
	As per IMD (range)	As per windy.com (at 16:00 hrs.)	As per windy.com (at 16:00hrs)	As per IMD	As per windy.com at 900m
Oct 17, 2022	04-08	08	19	NW	NW
Oct 18, 2022	04-10	04	16	NW/E	NW
Oct 19, 2022	08-12	03	21	NW/E	W

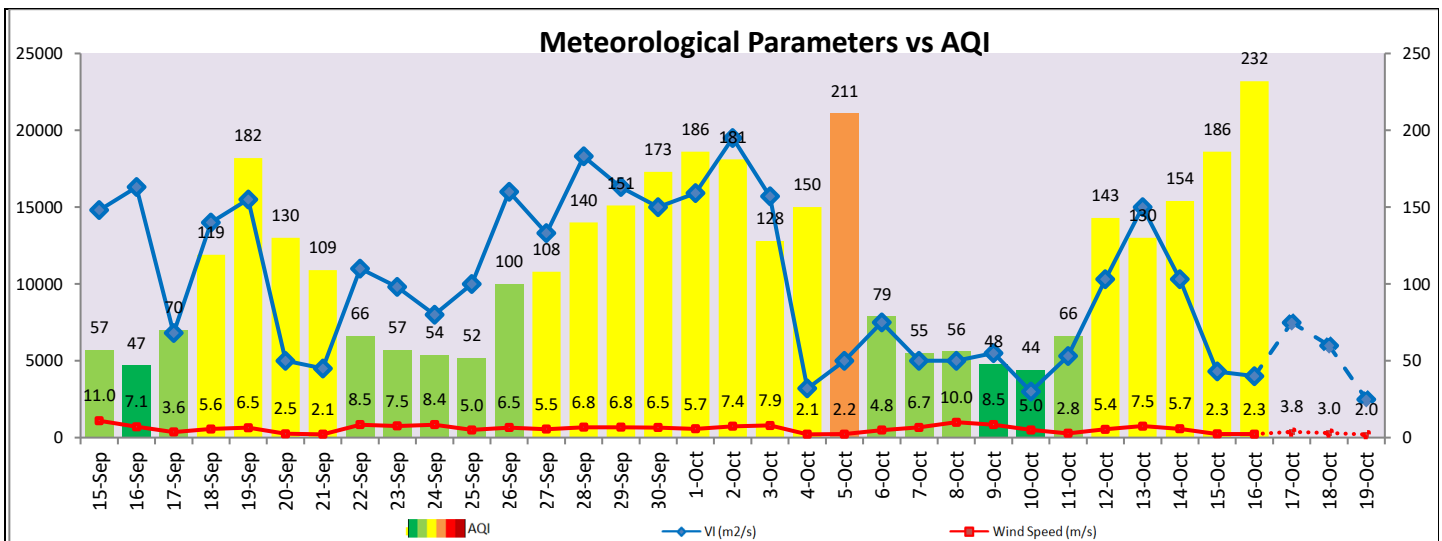
IMD Alert for Tomorrow (17.10.2022):

The overall air quality over Delhi is likely to deteriorate but remain in Poor category from 17.10.2022 to 19.10.2022. The predominant surface wind is likely to be coming from Northwest direction in Delhi with wind speed 04-08 kmph and mainly clear sky tomorrow. Ventilation index is likely to be 22,000 m²/s.

Active Fire Events (AFE):

Date	Punjab		Haryana	
	Nos. on the day	Total since September 15	Nos. on the day	Total since September 15
15.10.2022	169	1238	36	168
15.10.2021	660	1946	363	850

* As per IMD, the impact of stubble burning is negligible.



Hotspots for Today

City	Station Name	AQI value	Air Quality	Prominent Pollutant
Delhi	Anand Vihar, Delhi - DPCC	427	Severe	PM ₁₀
	Shadipur, Delhi - CPCB	303	Very Poor	PM _{2.5}
	North Campus, DU, Delhi - IMD	286	Poor	PM _{2.5}
	R K Puram, Delhi - DPCC	278	Poor	PM _{2.5}
	Mundka, Delhi - DPCC	269	Poor	PM ₁₀
Faridabad	Sector 11, Faridabad - HSPCB	275	Poor	PM ₁₀
	New Industrial Town, Faridabad - HSPCB	234	Poor	PM ₁₀
Gurugram	Sector-51, Gurugram - HSPCB	299	Poor	PM _{2.5}
Ghaziabad	Loni, Ghaziabad - UPPCB	347	Very Poor	PM _{2.5}
Greater Noida	Knowledge Park - V, Greater Noida - UPPCB	272	Poor	PM ₁₀
Noida	Sector-116, Noida - UPPCB	285	Poor	PM _{2.5}
	Sector-1, Noida - UPPCB	264	Poor	PM ₁₀