



Central Pollution Control Board

Air Quality Status for Delhi & NCR

Dated – January 16, 2025



Current Air Quality Status:

Air Quality Index (AQI) (Average of past 24 hours at 4 PM) in comparison with last two years

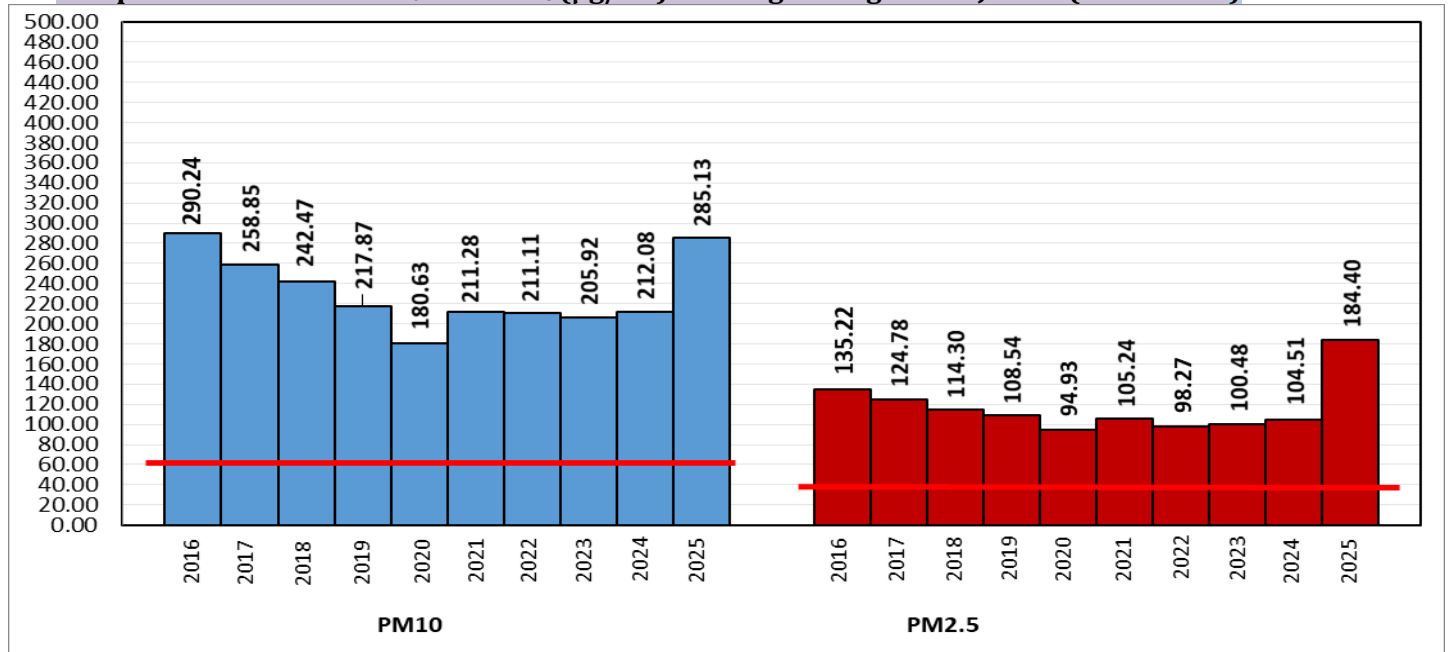
	2025			2024			2023		
	Air Quality	AQI Value	Prominent Pollutant	Air Quality	AQI Value	Prominent Pollutant	Air Quality	AQI Value	Prominent Pollutant
Delhi	Very Poor	302↓	PM _{2.5}	Very Poor	371↑	PM _{2.5}	Poor	270↑	PM ₁₀ , PM _{2.5}
Faridabad	Moderate	127↓	PM _{2.5} , PM ₁₀	Very Poor	302↓	PM ₁₀ , PM _{2.5}	Poor	248↓	PM _{2.5}
Ghaziabad	Moderate	195↓	PM _{2.5}	Very Poor	312↓	PM _{2.5}	Poor	229↑	PM ₁₀ , PM _{2.5}
Greater Noida	Moderate	133↓	PM _{2.5}	Very Poor	316↓	PM _{2.5}	Poor	242↑	PM _{2.5}
Gurugram	Moderate	161↓	PM _{2.5} , CO	Very Poor	317↑	PM _{2.5}	Poor	207↑	PM _{2.5}
Noida	Moderate	180↓	PM _{2.5}	Poor	288↓	PM _{2.5}	Poor	234↑	O ₃ , PM _{2.5}

*Data available for 37(2025), 39(2024), 36(2023) stations in Delhi today. # ↑, ↓ arrows indicate a decrease/increase as compared to the value on the previous day.

Comparative status of AQI - Delhi from 01 January to 16 Jan 2016-2025

Category	Year	2016	2017	2018	2019	2020	2021	2022	2023	2024	2025	2016	2017	2018	2019	2020	2021	2022	2023	2024	2025
	No. of days	16	16	16	16	16	16	16	16	16	16	16	16	16	16	16	16	16	16	16	16
Good (0-50)		0	0	0	0	0	0	0	0	0	0										
Satisfactory (51-100)		0	0	0	0	0	0	2	0	0	0	0	0	0	0	2	5	0	0	0	0
Moderate (101-200)		0	0	0	0	0	2	3	0	0	0										
Poor (201-300)		2	4	3	4	8	6	4	3	1	5										
Very Poor (301-400)		11	12	11	7	6	3	6	11	14	11	16	16	16	16	16	14	11	16	16	16
Severe (>401)		3	0	2	5	2	5	1	2	1	0										

Comparative status of PM₁₀ and PM_{2.5} (µg/m³) running average - Till Jan 15 (2016-2025)



*Red line shows the annual average concentration standards for PM₁₀ and PM_{2.5}.

Daily Average of Particulates in Delhi (24 hourly average value; from 06:00am of 15.01.25 to 06:00 am of 16.01.25)		
Date ↓ / parameter →	PM _{2.5} (µg/m ³)	PM ₁₀ (µg/m ³)
15-Jan-2025	207↑	304↓

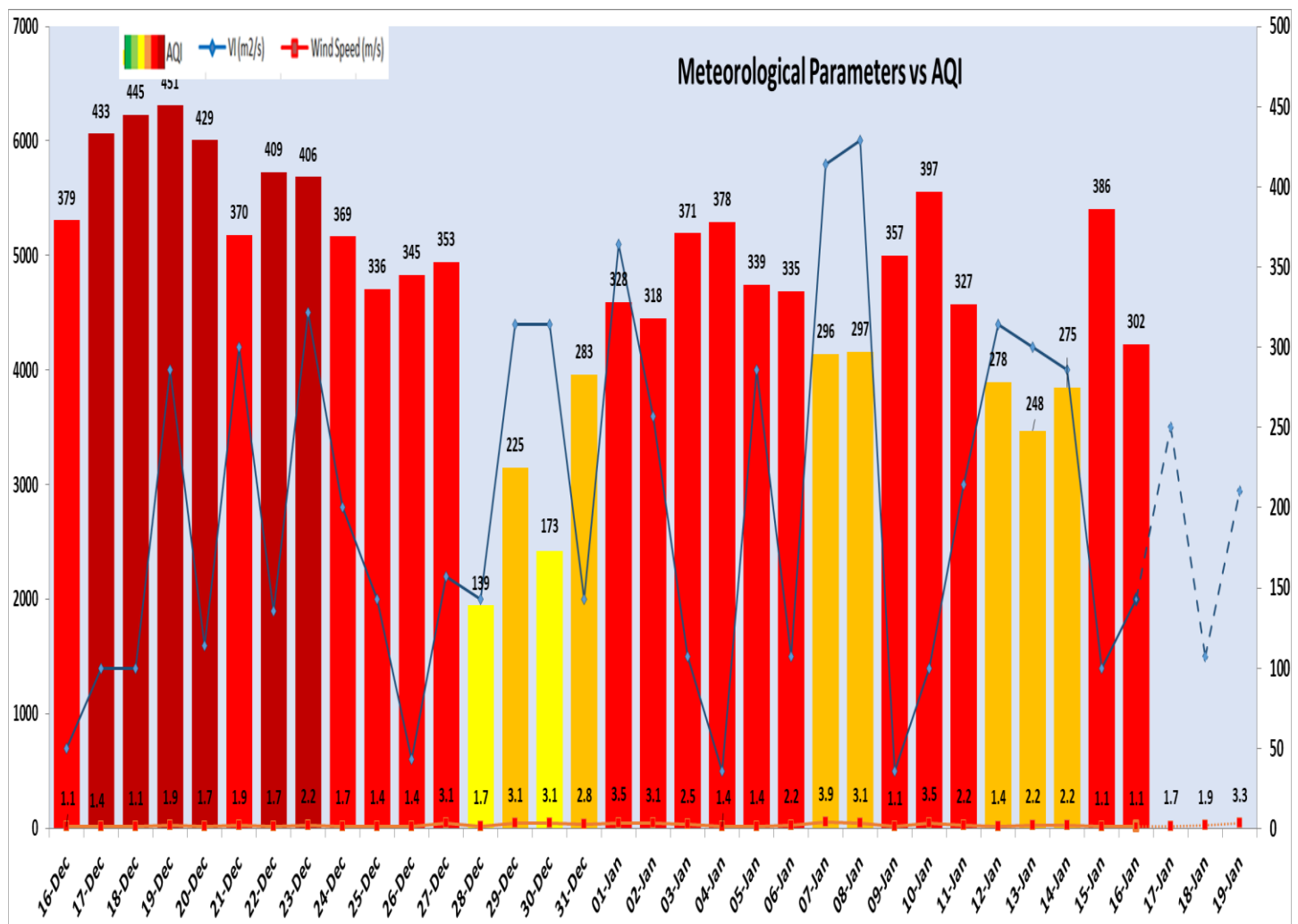
Hotspots for Today:		*Details given below	
Delhi	Mundka, Jahangirpuri, Rohini, Bawana, Wazirpur	Ghaziabad	Indirapuram
Faridabad	Sector 11	Greater Noida	Knowledge Park – V
Gurugram	NISE Gwal Pahari	Noida	Sector-62

Forecast by IITM(Delhi):			
	Jan 17, 2025	Jan 18, 2025	Jan 19, 2025
AQI Category	Poor	Very Poor	Very Poor

Wind Forecast for Delhi:					
	Wind speed (at surface) in km/h		Wind speed (at 900 m) in km/h	Wind Direction	
	As per IMD (range)	As per windy.com (at 16:00 hrs.)	As per windy.com (at 16:00hrs)	As per IMD	As per windy.com at 900m
Jan 17, 2025	04-08	08	17	NW	NW
Jan 18, 2025	06-08	04	09	NW	W
Jan 19, 2025	10-14	05	27	NW	NW

IMD Alert for Tomorrow (17.01.2025):

The air quality is likely to be in Poor category on 17.01.2025. The predominant surface wind is likely to be from the north direction with a wind speed less than 04 kmph during morning hours. Smog/dense fog in most of the places and very dense fog in isolated places is likely in the morning. The wind speed will gradually increase thereafter becoming 08-10 kmph from northwest direction during afternoon. It will decrease becoming less than 06 kmph from northwest direction during evening and night. Smog/ shallow fog is likely in the evening/night and partly cloudy sky on 17.01.2025 Ventilation index is likely to be 3500 m²/s.



Delhi Temperature in (°C)*		
Date	Minimum	Maximum
13-01-2025	9.4	17.3
14-01-2025	8.9	18.5
15-01-2025	6.0	21.2
16-01-2025	10.3	18.1

* Source – IMD (08:30 hrs.)

*Hotspots for Today				
City	Station Name	AQI value	Air Quality	Prominent Pollutant
Delhi	Mundka, Delhi - DPCC	373	Very Poor	PM _{2.5}
	Jahangirpuri, Delhi - DPCC	369	Very Poor	PM _{2.5}
	Rohini, Delhi - DPCC	369	Very Poor	PM _{2.5}
	Bawana, Delhi - DPCC	368	Very Poor	PM _{2.5}
	Wazirpur, Delhi - DPCC	363	Very Poor	PM _{2.5}
Faridabad	Sector 11, Faridabad - HSPCB	141	Moderate	PM _{2.5}
Gurugram	NISE Gwal Pahari, Gurugram - IMD	223	Poor	PM _{2.5}
Ghaziabad	Indirapuram, Ghaziabad - UPPCB	205	Poor	PM _{2.5}
Greater Noida	Knowledge Park - V, Greater Noida - UPPCB	170	Moderate	PM _{2.5}
Noida	Sector - 62, Noida - IMD	258	Poor	PM _{2.5}